



**West Lothian
Council**

EDUCATION EXECUTIVE

**PROPOSAL TO RELOCATE WEST CALDER HIGH SCHOOL – OUTCOME OF
CONSULTATION**

REPORT BY HEAD OF SERVICE – PLANNING & ECONOMIC DEVELOPMENT

A. PURPOSE OF REPORT

To inform the Education Executive of the outcome of the public consultation on the proposal to relocate West Calder High School.

B. RECOMMENDATION

That the Education Executive:

1. Considers the issues raised through the consultation and the officer responses provided.
2. Determines whether the proposed relocation for the new West Calder High School building to the site adjacent to Parkhead Primary School should be agreed.

C. SUMMARY OF IMPLICATIONS

I Council Values	Focusing on customer needs Being honest, open and accountable Making best use of our resources Providing equality of opportunity Working in partnership
II Policy and Legal (including Strategic Environmental Assessment, Equality Issues, Health or Risk Assessment)	Education (Scotland) Act 1980 and related regulations. The Standards in Schools (Scotland) Act 2000, the School Education (Amendment) (Scotland) Act 2002 and School (Consultation) (Scotland) Act 2010. It is also necessary to consider school provision and catchment area arrangements in the context of West Lothian Council planning policies contained within the: West Lothian Local Plan and the Strategic Development Plan (SESplan June 2013).
III Implications for Scheme of Delegation to Officers	The proposal will have no effect on the scheme of delegation.

IV Impact on performance and performance indicators	It is anticipated that the proposal will have limited direct effect on performance and performance indicators.
V Relevance to single outcome Agreement	The proposal supports delivery of Outcomes 2.5, 10 in the Single Outcome Agreement 2011-2012 and relates to the Economic and the Health and Wellbeing themes. Better Outcomes 3, 5, and 8.
VI Resources – (Financial, Staffing and Property)	Proposals that involve additional capital and revenue expenditure must be considered in the context of very constrained resources and would require to be managed within the Councils' current, and planned, capital and revenue resources. It is essential to make best use of available school capacity. Revenue costs, associated with adjustments to school transport, would need to be accommodated in future.
VII Consideration at PDSP	N/A
VIII Other consultations	The consultation methodology was approved by the West Lothian Council Education Executive, 11 September 2007 and revised to take account of the Schools (Consultation) (Scotland) Act 2010 by the Education Executive on 5 January 2010. Local ward members were briefed on the proposed option for consultation and were invited to comment through the consultation process.

D. TERMS OF REPORT

1. Background

West Lothian Council Education Executive agreed on 16 December 2014 that there was a need to undertake a formal consultation, in line with the requirements of the Schools (Consultation) (Scotland) Act 2010, on a proposal to relocate West Calder High School. The Council had previously agreed on 28 October 2014 to replace West Calder High School with a new school building.

West Calder High School serves the community of the Calders and surrounding areas. The school was built in 1965 to accommodate 750 pupils and to provide a balanced curriculum at that time. The current Physical Education (PE) provision at the school is largely unchanged apart from the recent addition of the all-weather playing field. The school has been variously extended to replace temporary units and to improve curricular provision. The school currently has capacity for 1100 pupils. Constraints on the site have prohibited any further extension to the school. The Council has agreed that a new build project would represent a more appropriate solution.

2 Consultation Arrangements

The consultation period and procedures

The formal consultation period began on Thursday 8 January 2015 and continued until Monday 23 February 2015, a period of 47 days including 30 school days. The consultation paper was made available in hardcopy at the schools involved in the consultation, and in local nurseries and libraries and on-line at: <http://www.westlothian.gov.uk/west-calder-high-consultation>

All interested parties were invited to submit their comments in writing or by e-mail. Details of the consultees and consultation arrangements are given at **Appendix 1**. Two public meetings were held the first at West Calder High School on Monday 19 January 2015 and the second at St Paul's Primary School on Tuesday 20 January 2015. A record of these public meetings is attached at Appendix 4(a) and 4(b).

In line with statutory requirements of the Schools (Consultation) (Scotland) Act 2010, this report has been published at least 3 weeks before consideration by the Education Executive. Copies of the report can be viewed in the schools affected by the proposal and in local public libraries and nurseries. It has also been published on-line at: <http://www.westlothian.gov.uk/west-calder-high-consultation>

The outcome of the consultation will be considered by the Education Executive in May 2015

2.1 The proposal

Scottish Schools for the Future Funding requires that the new West Calder High School is built by March 2018. The project plan for delivery of the new school demonstrates that this is achievable and it is anticipated that phased opening of the school will commence after the Easter break in 2018, with the school becoming fully operational for the start of the school session 2018/2019 in August 2018.

Due to constraints on the existing school site another site within the catchment area is required for the new school building.

The proposal for the new school site was fully detailed in the Consultation Paper which is attached at **Appendix A**.

2.2 Stakeholders Consultations

The following individuals and groups were consulted;

- Pupils, parent councils, parents/carers and teachers at associated schools
- Community councils and Trade Union Representatives
- Elected members and Council Heads of Service
- MSP and MP's

2.2.1 Schools, parent councils, parents/carers and teachers

Letters were sent to the parent councils and parents/carers of the children in the schools involved, Addiewell Primary, East Calder Primary, Mid Calder Primary, Parkhead Primary, Woodmuir Primary and West Calder High School inviting response to the proposal by letter, e-mail or on-line survey. 1,799 letters were issued. A summary of the e-mails and letters received together with council officer responses is set out at **Appendix 2 (a)**.

2.2.2 Primary school pupils and staff

The primary school teachers gave presentations to the P1 to P3 pupils and collated responses. A summary of comments made by pupils and staff is attached at **Appendix 2(b)**.

Council officers met with P4-P7 pupils at the five associated primary schools. The pupils completed response questionnaires. The key issues for the school were then identified by the school pupil representatives.

2.2.3 Secondary school students and staff

The opinions of the secondary pupils were sought through questionnaires issued to pupil council representatives and then discussed within register class groups. A summary of the responses is attached at **Appendix 2(b)**.

2.2.4 Community Councils and Trade Union Representatives

In total 35 letters were issued with one response being received from a member of West Calder Community Council. A summary of this email is set out at **Appendix 2(a)**.

2.2.5 West Lothian Council elected members and West Lothian Heads of Service

All elected member and Heads of Service were consulted regarding this proposal, in total 31. No comments were made by this group of consultees.

2.2.6 MSP and MP's

In total 10 letters were issued with two MSP's responding. A summary of comments made is attached at **Appendix 2(b)**.

2.2.7 Public meetings

Two public meetings were held during the consultation process. A summary record of these meetings is attached at **Appendix 4**.

2.2.8 Education Scotland

Education Scotland has a statutory duty to review all relevant consultation documentation, to visit the affected primary and secondary schools and hold discussions with relevant consultees. Education Scotland is also required to prepare a statement on the education aspects of the proposal. The Education Scotland report is attached at **Appendix 5**.

2.3 Full content of submissions to the consultation

The full content of all submissions is available for viewing by application in writing to Sharon McCawley, Forward Planning Officer, Education Planning Services, Civic Centre, Howden South Road, Livingston EH54 6FF, or by e-mail to schoolconsultation@westlothian.gov.uk.

3 Key issues raised in the consultation

The key issues raised by stakeholders during the consultation included:

- Congestion on Harburn Road
- Access to the new school
- Loss of green space, walking paths, loss of trees
- Increase in number of children walking past Parkhead Primary to access the new secondary school site.

These issues are set out in summary below. The Council's responses to these issues are set out in sections 3.1 to 3.4 below and within each consultation response.

3.0.1 Congestion on Harburn Road

Many consultees suggested that there was an existing traffic congestion problem on Harburn Road and surrounding areas and raised concerns that the new school location would increase road traffic congestion and safety issues.

3.0.2 Access to the new school

Respondents were concerned that the Council may propose the road access to the replacement West Calder High School be taken from the Harburn Road end of the site. They made suggestions that West Lothian Council should work closely with Network Rail to ensure that road access to the new school site is taken from the A71.

3.0.3 Loss of green space, walking paths and loss of trees

A range of comments were made about the location of the replacement high school having a negative impact on the green space, loss of trees, walking paths and loss of children's play areas.

3.0.4 Number of children walking past Parkhead Primary School

Comments were made regarding walking routes to the new high school given that Harburn Road and surrounding walking routes are already considered very busy. Particular concern was expressed over the likely increase in the number of children walking past Parkhead Primary School to access the new secondary school site.

3.1 Parent Councils, parents/carers and other stakeholders

The summary of written responses from Parent Councils, parents/carers and other stakeholders can be found at **Appendix 2(a)**. For reasons of confidentiality the names of parents/carers have not been included. Letters and e-mails were either acknowledged or had detailed responses if questions were raised. The responses are summarised in the appendix. The responses received were from the following:

Written responses from:	number
Parent Councils	1
Parents/carers	8
Others	44

The comments made, and issues raised, online, by email or letter and officer responses are attached at Appendix 2(b).

3.1.1 Congestion on Harburn Road

Many consultees suggested that there was an existing traffic congestion problem on Harburn Road and surrounding areas and raised concerns that the new school location would increase road traffic congestion and safety issues.

Officer Response:

West Lothian Council are aware of the current traffic pressure on Harburn Road and would prefer road access to the replacement West Calder High School to be taken from the A71. This solution would mean that there should be no material change to the traffic volumes within the Harburn Road area.

The road access to the site proposed for the relocation of WCHS would not utilise the existing access to Parkhead Primary School. It may be possible to create an additional access to Parkhead Primary School as part of the new road layout that would serve the relocated WCHS. This could offer benefits to transport and access issues on Harburn Road and it's junction with the A71. Officers are progressing this option.

3.1.2 Access to the new school

Respondents were concerned that the Council may propose the road access to the replacement West Calder High School be taken from the Harburn Road end of the site. They made suggestions that West Lothian Council should work closely with Network Rail to ensure that road access to the new school site is taken from the A71.

Officer Response:

While utilising or improving access from Harburn Road is not the access option favoured by the council, it does need consideration as part of the overall access options for the proposed relocation of West Calder High School. It is recognised that this suggestion does focus the local community on the impact of what could be desire lines to the new school location and it is essential to be open with the community on this matter. The access solution will clearly be an important aspect of dealing with traffic flow at key points in the day but also in relation to construction of the new school. Discussions with Network Rail on potential bridge options and future road layouts are progressing and well advanced. These matters are being carefully considered through site feasibility options and will be relevant for determination of any planning application should the proposal to relocate West Calder High School be approved. The preferred option is to take the road access to the new school from the A71 and not via Harburn Road.

3.1.3 Loss of green space, walking path and tree loss

A range of comments were made about the location of the replacement high school having a negative impact on the green space, loss of trees, walking paths and loss of children's play areas.

Officer Response:

The exact location of the new school building and access, pedestrian and vehicular, is not known as yet. Therefore the impact on green space, walking paths or loss of trees cannot be determined in detail at this point in time. However, West Lothian Council would replace the environmental and play area elements affected as part of the overall development of the larger site. The environmental value of the proposed new school site to the community is acknowledged and every effort will be made to maintain the quality of this area through the new school project.

3.1.4 Number of children walking past Parkhead Primary School

Comments were made regarding walking routes to the new high school given that Harburn Road and surrounding walking routes are already considered very busy. Particular concern was expressed over the likely increase in the number of children walking past Parkhead Primary School to access the new secondary school site.

Officer Response:

The proposed new access road for the new West Calder High School would be accessed from the A71 and would therefore avoid Harburn Road. It is recognised that more young people living in West Calder would be able to walk to school. Consideration is also being given to an alternative road access for Parkhead Primary School as part of the new school project which would reduce the need for parental drop-off on the Harburn Road. The council is also assessing options to improve the range of suitable walking routes to the new secondary school site which could also improve walking routes to Parkhead Primary School.

The footpath between Chapelton Drive, Polbeth and Harburn Drive, West Calder runs through the site proposed for the relocation of WCHS. This path is to be upgraded in terms of width, surface and street lighting. The route of this path may be affected by the actual location of the school but it is not proposed to delay this project given the benefits that the new footpath would bring. Adjustment to the path would be undertaken subsequently through the new school project if required.

3.2 Primary School Pupils

Responses were received from each of the associated schools; each P4-P7 primary pupil completed a questionnaire to identify “good points, worries and other comments”. Teachers presented to the P1-P3 classes and collected similar information from these younger stages. The summary of the school responses is at Appendix 2(b) with the main issues grouped by theme. Council officers were impressed by the interest and level of understanding shown by the pupils during the consultation.

Across the five primary schools, 469 pupils thought that the new school site was a good position for the new West Calder High School and 76 disagreed. As percentages these are 86% and 14% respectively. The key issues raised by the pupils are summarised below, in order of frequency.

3.2.1 Better facilities

Pupils comments:

- It will be more modern and will be better.
- New gym halls, more modern classrooms and school. Great idea.
- Will have a modern school and new facilities.

Officer Response:

The majority of comments suggested that the proposal would mean that having a replacement high school would mean there would be new, more modern facilities for to use. Overall pupils were very positive about the opportunity for enhanced school facilities. The new building would in particular provide greatly enhance PE facilities, pupil social space and greatly improved class and specialist accommodation, in line with the most recent new school standards.

3.2.2 Distance to the replacement school is less

Pupils comments:

- Less travelling distance and people can walk to school each day.
- It is closer and will be easier to get to.
- The new school would be closer to Parkhead Primary and would be in West Calder.
- It is close to where my house is and I won't need to get a bus now.

Officer Response:

A number of children identified that the replacement school would be closer to get to than the existing West Calder High School and were positive about the opportunity to walk to school rather than travel by bus. The replacement high school is approximately 1 mile further towards West Calder. The new school location will mean that most of West Calder would be in walking distance of the new school, pending footpath improvement. This would be beneficial for West Calder High School, Parkhead Primary School and also community access.

3.2.3 New school will have more space

Pupils Comments:

- New school will be bigger with new things.
- Can't wait to have more chilled out areas at new school.
- Bigger school means more space.

Officer Response:

The opportunity for a new school is a substantial enhancement on the original proposal for West Calder High School to be extended and refurbished. The design and layout of the new school will be informed by recent new school provision in Scotland and elsewhere. This will provide an opportunity to learn from what has been successful and what has been less successful in terms of new design. The quality of facilities and space will be greatly enhanced through a new school. Pupils would be consulted in the development of the new school facilities. The new school would also benefit from the latest information technology innovation.

3.3 Secondary School Students

The opinions of the 850 pupils who currently attend West Calder High School were sought through questionnaires issued to pupil council representatives and then discussed within register groups of around 25 pupils. Responses were collated by class tutors and fed back to the school Senior Management Team representative.

In all, 15 register groups responded representing the views of approximately 380 pupils.

373 pupils (98%) of responses thought the position of the new school was good.

6 (1.5%) pupils were undecided

1 (0.26%) pupil though that the site wasn't a good position for the new school.

Pupils Comments:

The main good points of the proposal identified by pupils were;

- New school in West Calder will be closer for a larger number of pupils from Polbeth and West Calder, meaning more pupils can walk to school.
- Will be a benefit to Parkhead Primary School.

The worries identified by pupils regarding the proposal were;

- Further away for the communities of East and Mid Calder and the catchment area may change in the future.
- Health and safety issues regarding the proximity of a railway line and increased traffic in that area with potentially more road accidents.
- Close proximity to the houses in the community.

Officer Response:

The council has developed a two high school strategy for the Calder. West Calder High School would in the longer term serve the west of the current elongated school catchment area. A new high school is also planned for East Calder to serve the east part of the catchment area. Plans for the new high school in East Calder are being progressed with housing developers. The development of the new West Calder High School site would include full risk assessment and provision of suitable road and pedestrian access as well as necessary boundary separation and security arrangements. The safety of pupils, staff and the public is given the highest priority in plan development. The benefits of locating the new school closer to West Calder are also noted at 3.2.2.

3.4 Public Meetings

Two public meetings were held, the first at West Calder High School and the second at St Pauls Primary School in East Calder. Records of both meetings are at **Appendix 4(a) and 4(b)**.

Approximately 60 people attended the meeting at West Calder High School. Some key issues at the meeting are summarised below with officer responses in italics.

3.5.1 Use existing site with existing services

Comments were made at the meeting suggesting rather than building a replacement school for West Calder High School, a similar refurbishment compared with that of Tranent High School is done on the existing school.

Officer Response:

Experience of past Private Public Partnerships (PPP) has indicated a lack of interest in the financial market for school refurbishment projects. As the refurbishment/extension project was being developed, senior officer review of the project identified constraints relating to the present West Calder High School building and site that impinged on the educational benefit and requirements that could be achieved. It was considered that the project did not represent full value for money, nor sufficient lifespan for the asset given the proposed level of investment and that a new build project would represent a more appropriate solution. This was identified to in a council report on 28 October 2014. The NPD (Non-profit Distribution) project supported by the Scottish Government would mean that the government would fund £20 million of the budget cost whilst West Lothian Council would fund the balance of £10 million. The council has moved in favour of a replacement school on a new site given current site consideration, valuation for money and school suitability considerations i.e. the outcome of the previous refurbishment project would not address all of the inherent difficulties of the current West Calder High School building.

Members are advised that the project cost above does not include the cost of off-site infrastructure and rail bridge which is separately budgeted at £5.5m.

3.5.2 Suggested access road unsuitable

Members of the public were concerned that using Harburn Road as main access to the new school was unsuitable due to heavy traffic congestion at present.

Officer Response:

If a southern access was required it would need to be significantly improved, a matter of design, but access from the A71 over the railway would be a preferred option. Officer responses noted at 3.1.1 and 3.1.2 are also relevant.

3.5.3 Children walking to school

There was a statement made regarding the increase in children walking to the new West Calder High School and clarification was asked on how to improve walking route.

Officer Response:

Walking routes from Polbeth to Parkhead Primary School and the proposed new high school site will be improved as a consequence of the upgrade works to the Harburn Drive – Chapelton Drive footway. This is a scheduled improvement that will be implemented whether or not West Calder High School is relocated to Parkhead. Children approaching from the west to Parkhead Primary School currently approach along 2 main “routes” - Main Street, past the War Memorial and along Harburn Road 1-32 to Parkhead Primary School. The turn from Harburn Lane unto Harburn Road is poor and may benefit from a raised table. The 2nd route feeds in more from a south westerly direction from Hartwood Road to Westmuir Road on via The Glebe and only uses a short length of Harburn Road almost at Parkhead Primary School gate. Consideration could be given to improving the footpath through Burngrange Park to provide a more direct walking route to the Parkhead Primary School and the relocated West Calder High School.

Approximately 20 people were in attendance at the St Pauls Primary School meeting. Some key issues at the meeting are summarised below:

3.5.4 Pupils use of sport facilities in new school out with school hours

Parents expressed concern over provision for sports programmes and bus services to enable school children out with school hours to travel to and from sports clubs.

Officer Response:

The difference in distance from the current school site to the proposed new school is approximately one mile. The new building will deliver greatly enhanced community facilities for the west of the current school catchment area. East Calder benefits from a good quality sports centre and longer term would receive a new high school as noted previously at 3.3. The Council would look at arrangements in place at denominational schools where similar issues arise to inform how these concerns can be addressed. Armadale Academy also has good practice in sports community use that could also be developed at the re-located West Calder High School.

3.5.5 Concerns over loss of trees and green space.

There was general concern with the impact of a substantial school building on the recently improved public open space adjacent to Parkhead Primary School.

Officer Response:

West Lothian Council recognise your concerns over loss of green space but will endeavour to minimise this and engage with local residents in taking the project forward. The exact location of the new school building and access, pedestrian and vehicular, is not known as yet. Therefore the impact on green space, walking paths or loss of trees cannot be determined in detail at this point in time. However, West Lothian Council would replace the environmental and play area elements lost as part of the overall development of the larger site. The environmental value of the proposed new school site to the community is acknowledged and every effort will be made to maintain the quality of this area through the new school project.

3.5.6 Government funding

Concerns were expressed that funding from the Scottish Government might not be received.

Officer Response:

The Scottish Government have confirmed that they will contribute 2/3rd with West Lothian Council providing the remaining 1/3rd of the project cost. West Lothian Council have committed to this project and will provide £10 million towards a total £30 million project. Funding commitment for a like for like school replacement ie to accommodate 1,100 pupils has been secured from the Scottish Government. The replacement West Calder High School is wholly publicly funded. The new high school in East Calder would be funded by developers.

Members are advised that the project cost above does not include the cost of off-site infrastructure and rail bridge which is separately budgeted at £5.5m.

4 Report from Education Scotland

Inspectors from Education Scotland were fully involved in the consultation process as set out in the Education (Consultation) (Scotland) Act 2010 as amended. The inspectors focussed on the educational aspects of the proposal. They assessed all the submissions and met with selected stakeholders. A draft report was checked for accuracy by Council Officers.

The inspectors noted that the proposal to relocate West Calder High School in a new purpose built school has the potential to deliver significant educational benefits to the children and young people directly affected by it.

They found that the proposal has the clear support of parents, staff, children and young people having a positive impact on the local community throughout the provision of enhanced facilities and resources for community use.

Inspectors noted that if the Council chooses to proceed with the proposal it will need to address the issues of access to the site of the school as a matter of urgency if it is to complete the new school by March 2018.

They also made reference that the Council needs to ensure that there are sufficient spaces within the site of the new school for car parking and for school buses.

Inspectors made suggestions that the Council will need to continue to work with and consult staff, parent, children, young people and the local community to address their concerns and to ensure that the significant potential educational benefits of the proposal to relocate West Calder High School in a new purpose-built school are realised in full.

The full report from Education Scotland is at **Appendix 5**.

Officer Response:

The importance of well-designed access by road and on foot with suitable car parking and school bus facilities are a key element of new school design. The proposed site for the new school is sufficient to accommodate the current and anticipated car and bus parking drop-off and pick-up arrangements. Development of these elements of the project will be undertaken in consultation with the school community and local community. These elements will also be fully tested through the planning application process.

E CONCLUSION

The consultation of the proposal has followed the requirements of the Schools (Consultation) (Scotland) Act 2010 as amended. The consultation response on the proposal has generated a good level of responses and indicated support for the proposal. The key issues to be addressed and related officer responses are set out at Section 3.

F BACKGROUND REFERENCES

- 20 January 2009 Education Policy Development Scrutiny Panel report: *School Catchment Area Management*.
- 5 January 2010 Education Executive report: *Enhanced Consultation Arrangement for Formal School Consultation Processes*.
- 21 June 2010 Education Policy Development and Scrutiny Panel report: Catchment Review Strategy.
- 22 March 2011 Council Executive report: *Funding for Key Infrastructure Projects*.
- 18 March 2014 Education Executive report: 2012 Base School Forecasts.

West Lothian Local Plan 2009
Schools (Consultation) (Scotland) Act 2010
Strategic Development Plan (SESplan June 2013)

Appendices/Attachments:

Appendix A	Proposal Paper
Appendix 1	Consultee details and consultation arrangements
Appendix 2(a)	Summary of written and e-mail responses
Appendix 2(b)	Summary of pupil responses
Appendix 3 (a)	P1-P3 Views
Appendix 3 (b)	P4-P7 Questionnaire
Appendix 3 (c)	Secondary Questionnaire
Appendix 4 (a)	West Calder High School record of public meeting
Appendix 4 (b)	St Pauls Primary record of public meeting
Appendix 5	Report from Education Scotland
Appendix 6	Power point presentation for public meetings

Contact Person:
Sharon McCawley
Forward Planning Officer
West Lothian Council
Education Planning
Civic Centre
Howden South Road
Livingston
West Lothian
EH54 6FF

Tel: 01506 281859
Email: Schoolconsultation@westlothian.gov.uk

Craig McCorriston, Head of Services, Planning and Economic Development
March 2015

Proposal Paper

Proposal to Relocate West Calder High School



West Lothian Council
Planning & Economic Development
Civic Centre
Howden South Road
Livingston
West Lothian
EH54 6FF

January 2015

Index

Section	Page
1. Introduction	3
2. Present school and site	3
3. The need for change	4
4. The proposal	4
5. Educational benefit statement	5
6. Summary	7
7. Consultation procedures	8
Appendix A Catchment area of West Calder High School	10
Appendix B West Calder High School current site	11
Appendix C Proposed site	12
Appendix D Consultation dates	13

Proposal to re-locate West Calder High School.

1 Introduction

- 1.1 West Lothian Council agreed, on 28 October 2014, to undertake a formal consultation on the re-location of West Calder High School. As it is not feasible to construct a new school on the current school site, due to constraints, it is necessary to identify a new site for the school.
- 1.2 In terms of the Schools (Consultation) (Scotland) Act 2010, any proposal to change the site of a school requires a formal consultation process. The consultation involves the parents/carers/children and staff of West Calder High School, as well as other key stakeholders associated with the school and statutory consultees.
- 1.3 Any views, or comments on the proposal should be sent by **23 February 2015**, in writing to Sharon McCawley, Forward Planning Officer, Education Services, West Lothian Civic Centre, Howden South Road, Livingston EH54 6FF, or by email to schoolconsultation@westlothian.gov.uk. Any requests for further information should also be directed to Sharon McCawley.
- 1.4 Further copies of this consultation document are available in West Calder High School, at West Lothian Civic Centre, or they can be accessed on-line, using the link: <http://www.westlothian.gov.uk/west-calder-high-consultation>

2 The present school and site

- 2.1 West Calder High School serves the community of the Calders and surrounding areas. The catchment area is shown in **Appendix A**. The roll is currently 863 pupils. The school has a design capacity for, and can accommodate, 1,100 pupils.
- 2.2 The school was constructed to provide new secondary school capacity around 50 years ago. The school opened in 1965, and while significant extensions and improvement works have been carried out to the building, it is one of the oldest main school buildings within the council's estate.
- 2.3 In addition, redevelopment of the site is constrained by an ethylene pipeline which crosses the site. This pipeline places constraints on the useable part of the site and, most significantly, would prevent the normal approach to rebuilding schools on existing sites where the new building is built on the playing field area with the playing fields being re-provisioned on the site of the former school building.
- 2.4 The current school site is on the edge of the village of Polbeth. As a result of the extensive catchment area for the school most pupils are bussed to the school.

3 The Need for Change

- 3.1 Education authorities have statutory responsibilities to ensure sufficient school places, to improve the quality of school education provided, to raise standards of education and to secure best value in the use of available resources.
- 3.2 Prior to October 2014 the council had an existing approved capital project to deliver £12m of investment at West Calder High School. This was being jointly funded with council resources of £4 million and £8 million from phase 3 of Scotland's Schools for the Future programme.
- 3.3 The project sought to address both school condition and suitability issues and involved the provision of new physical education facilities, dedicated pupil support accommodation, improvements in dining facilities, vocational facilities, indoor social space and was being designed to facilitate community use of the school facilities.
- 3.4 However, as the refurbishment/extension project has been developed, a senior officer review of the project identified constraints relating to the present West Calder High School building and site that impinged on the educational benefit and requirements that could be achieved. In particular, the necessity to construct the proposed extension outwith the protection zone of the ethylene pipeline, which traverses to the west of the existing school building, resulted in a proposed layout which was built around the land available, rather than being based on an efficient and effective layout for the school. The constraints on the site would also have prohibited any further extension to raise capacity above 1,100 pupils, should that be necessary in the future. Given these issues, it was considered that the project did not represent full value for money, nor provide sufficient lifespan for the asset given the proposed level of investment. It was concluded that a new build project would represent a more appropriate solution. The education benefits to be gained from the relocation are set out in Section 5 of this consultation.
- 3.5 Confirmation has been received from Scottish Government that part funding would be provided to enable the new build solution for West Calder High School to be taken forward as a Non Profit Distributing (NPD) project under the Schools for the Future programme. The Scottish Government funds secondary school projects on a two thirds basis with the council contributing the remaining third. Although the current school roll is 863 pupils, the roll is projected to increase to the current capacity of 1,100 pupils as housing sites within the catchment area, are built out. Consequently, the project is based on a 1,100 school capacity requirement i.e. replacement of the current school.

4 Proposal

- 4.1 Scottish Schools for the Future Funding requires the school to be built by March 2018. The project plan for delivery of the new school demonstrates that this is achievable and it is anticipated that phased opening of the school will commence after the Easter break in 2018, with the school becoming fully operational for the start of the 2018/19 school term in August 2018.

- 4.2 For the reasons set out paragraph 2.3 above, there is insufficient space on the existing site to build another school and another site, within the catchment area, is required.
- 4.3 A site search exercise, focused on identifying a deliverable site within the existing catchment area, has been undertaken. The site search included consideration of both publically and privately owned sites which could allow delivery of the school within the strict timescales required to secure Scottish Schools for the Future funding support. Following the site search, it was not possible to identify a site, other than the proposed site, which would permit delivery of the project and completion of the development in line with funding requirements. In addition, it was not possible to identify an area of land sufficient to meet projects need, which would meet budgetary restrictions.
- 4.4 The proposed site is within the existing West Calder High School Catchment Area and the closest available and deliverable site to the existing school.
- 4.5 Following the site search exercise, a site at Parkhead, West Calder has been identified as the proposed location. This site is delineated on the aerial photograph at **Appendix C**.
- 4.6 The site identified extends to approximately 39ha. It is expected that less than half of the site will be required for the school infrastructure, including the main school building, sports facilities, servicing and parking. It is anticipated that the main school building will be located on the northern part of the site, but the actual location will be influenced by a number of factors including the design of the building, ground conditions, and the location of the access on the site.
- 4.7 The site can currently be accessed from the south. A new vehicular access road would have to be constructed from Harburn Road along the line of an existing track north of Burngrange Football Ground. This access is fully controlled by West Lothian Council and no third party agreements are necessary to implement this access. Vehicular access to the site could be direct from the A71, but this would require the redesign and improvement of one of the existing bridges over the railway line to the north of the site. This access solution will require the agreement of Network Rail, but could be facilitated by works required to the bridges in connection with the electrification of the railway line commencing in 2015. Given the need for third party agreement on the vehicular access direct from the A71, the consultation seeks views on the access from the south (Harburn Road) and from the north (A71).
- 4.8 Notwithstanding the vehicular access that is ultimately implemented, pedestrian and cycle access would be available from a number of points to the north of the site. These would include access via Harburn Road and via an improved footpath and cycle path from Polbeth to West Calder via the proposed school site. Improvements to the latter were planned in advance of the site being identified as a proposed school location and will be commenced in 2015.

5 Educational Benefit Statement

- 5.1 The provision of a new school building for West Calder High School, rather than extension and refurbishment of the current school building, provides the opportunity to make available to pupils the most modern standard of school

facilities and resources and support the delivery of the curriculum for excellence. The new facilities will offer flexible learning experiences which will contribute to the four contexts for learning:

- Ethos and life of the school;
- Curriculum;
- Inter-disciplinary learning; and
- Personal achievement

- 5.2 The condition of the new school building will be a significant improvement on the current establishment. The new school will be fully accessible and equipped with modern Information Technology solutions to ensure the best learning opportunities are afforded to every child.
- 5.3 The proposal is designed around the needs of the students and the curriculum, both in relation to the Broad General Education (S1-S3), with a focus on core curricular areas, inter-disciplinary learning and also to enable the career and curricular interests and aspirations of young people to be met. With regard to the Senior Phase (S4-S6), the facilities will be established to reflect the development of vocational as well as academic education provision and meet the requirements of national certification.
- 5.4 The opportunity for a new school is a substantial enhancement on the original extension and refurbishment proposal. The design and layout of the new school will be informed by recent new school provision in Scotland, and elsewhere, thus providing an opportunity to learn from what has been successful, and what has been less successful, in terms of new design.
- 5.5 A particular benefit of the new school will be that access improvements will be made to support pupils with additional needs attending their local school. The current school is on several levels causing access difficulties for children with additional needs. There are currently a series of lifts in place, however, some areas of the school are unsuitable for access to children with specific additional needs. The new building will be designed to meet modern access requirements and support inclusion of pupils with additional learning needs.
- 5.6 The proposed site is adjacent to Parkhead Primary School but will be accessed separately to avoid congestion at the start and end of the school day. However, the close proximity of the primary school would facilitate greater access to the secondary resources and accommodation for planned activities through, for example, the use of the sports facilities, music rooms, science laboratories and home economics kitchens.
- 5.7 The new location for West Calder High School would enable greater community access to the very high standard of facilities, particularly physical education facilities for community use outwith core school hours.
- 5.8 West Calder High School is currently situated in the east of Polbeth village. The proposed location would be adjacent to the largest town in the west of the catchment area, West Calder. The effect of the relocation is that for existing pupils, and pupils expected to attend it, from the east of the catchment area, there will not be a material change in the distance travelled to the school. Those pupils in the west of the catchment area will be closer to the proposed school location. Those pupils living in the west side of the village of Polbeth will be closer to the proposed new school than the old school and only those living

in the eastern part of Polbeth will have further to walk. However, those pupils within the eastern part of the village will still be within walking distance and walking routes will be improved to facilitate walking to school.

- 5.9 Outwith West Calder and Polbeth the new location is insignificant in its impact on accessibility as most pupils are already outwith walking distance and are bussed to school. Pupils in West Calder who are currently bussed to the existing school will be able to walk to the proposed school.
- 5.10 It is recognised that the most easterly communities of East Calder and Mid Calder are some distance from the new school building but this would not be materially different from the current building. The council's development strategy, as set out in the West Lothian Local Plan, identifies that in the longer term, a new non-denominational secondary school is proposed for the East of the school catchment area and, therefore, the new school represents the first step in the implementation of a 2 non-denominational secondary school strategy for the Calder. Any new school at East Calder would, however, have to be subject of separate statutory consultation processes and is referred to here for information only
- 5.11 The proposed location will be more accessible to a greater number of pupils on foot meaning that fewer will have to be bussed to the school. The school will also be located close to West Calder Railway Station, which will offer some accessibility benefits from within the catchment area. Rail service improvements on the line are planned for implementation in 2016. Improvements to footpath and cycle access to the site are also being progressed.
- 5.12 It is widely acknowledged that the provision of a new school is a boost for both staff, pupils and the wider community and provides an opportunity to further raise the aspirations and achievements of the school community. The feedback from the school community at Armadale and Deans following the opening of their new schools supports this expectation and indeed is recognised more broadly through the national school investment programme. The West Calder High School community will want to capture all the benefits of the new school project to support improvements in attainment, achievement and positive destinations for all of the young people.

6 Summary

- 6.1 A change of site will allow a replacement West Calder High School to be built. This will bring educational benefits to the pupils at the school and important benefits for the community of West Calder.

7 Consultation Procedures

- 7.1 In terms of the Schools (Consultation) (Scotland) Act 2010, the Education Authority is required to publish details of, and consult on, any proposal to change the site of any school.
- 7.2 West Lothian Council will not make any decision, or put any changes into effect, until the consultation period has been concluded in line with statutory requirements.
- 7.3 The consultation period will be a total of 47 days, which includes 32 school days. It begins on Thursday, 8 January 2015, and finishes on Monday, 23 February 2015.
- 7.4 The consultation will involve pupils, parents/carers, the Parent Council and staff of the school as well as other associated stakeholders and statutory consultees.
- 7.5 In addition to the statutory consultation requirements, MPs, MSPs, Lothian Health and other West Lothian Council Services will also be consulted.
- 7.6 Two public meeting will be held, the first at 7.00 pm on Monday 19 January 2015 at West Calder High School, and the second at 7.00 pm on Tuesday 20 January 2015 at St Paul's Primary School in East Calder.
- 7.7 Council officers will be present at the public meetings to discuss the proposal and there will be an opportunity to ask questions. It is appreciated, however, that there is a limited time at meetings to discuss everything fully and not everyone is comfortable with speaking at a public meeting. To make sure that all issues are covered, and everyone gets the opportunity to contribute to the discussion, advance notice of specific questions or issues to be raised will be accepted, in writing only, up to 2 days in advance of the meetings (see contact details at 7.11 below).
- 7.8 At the end of the consultation process, a report will be prepared for West Lothian Council detailing all responses received, summaries of their content and a statement from HMIE on the educational aspects of the proposal. An officer response to the issues raised through the consultation will also be incorporated in the report. Copies of the report will be available, prior to consideration by the council, in West Calder High School, West Calder Library and on-line at: <http://www.westlothian.gov.uk/education/schoolrelateditems/> It is envisaged that the report will be published on Wednesday 22 April 2015. The key dates are set out in **Appendix D**.
- 7.9 An on-line version of the documents and other items related to the consultation can be found on the West Lothian Council website using this link: <http://www.westlothian.gov.uk/education/schoolrelateditems/>
- 7.10 Further information on the proposal can be obtained by writing to Sharon McCawley, Forward Planning Officer, Education Services, West Lothian Civic Centre, Howden South Road, Livingston EH54 6FF, (Tel: 01506 281859), or by email to schoolconsultation@westlothian.gov.uk
- 7.11 All interested parties are invited to submit their comments on or before Monday 23 February 2015. This can be done by:

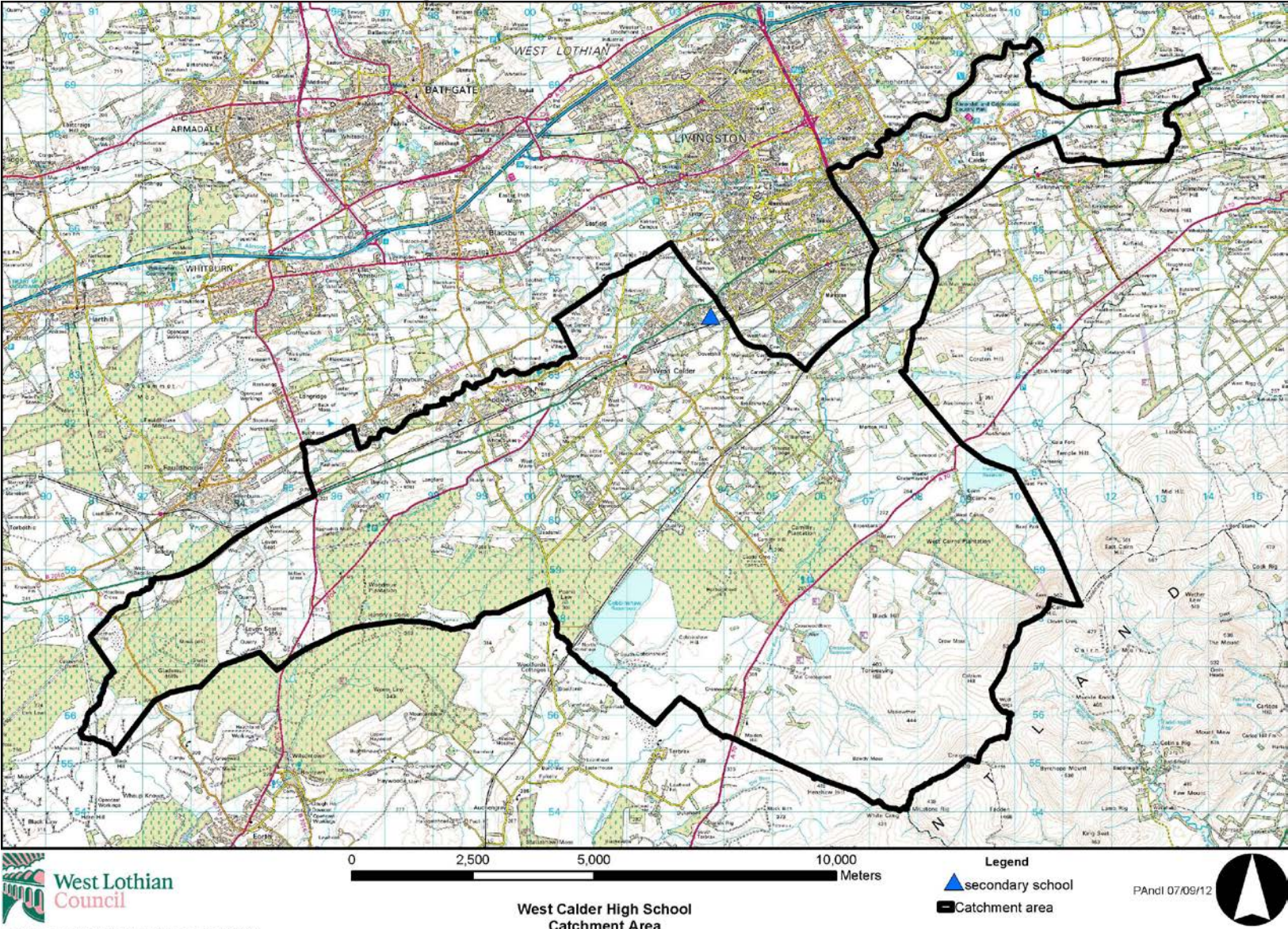
- writing to Sharon McCawley, Forward Planning Officer, Education Services, West Lothian Civic Centre, Howden South Road, Livingston EH54 6FF;
- sending an e-mail to schoolconsultation@westlothian.gov.uk

Representations received after Monday 23 February 2015 will not be taken in to account.

Moira Niven
Depute Chief Executive
West Lothian Civic Centre
Howden South Road
Livingston
West Lothian
EH54 6FF

January 2015

Appendix A: Catchment area of West Calder High School.



© Crown copyright and database right 2012.
 All rights reserved. Ordnance Survey Licence number 100037194

Appendix B: West Calder High School Site.



Appendix C: Proposed site.



Appendix D Consultation dates.

Date	Event
Tuesday 28 October 2014	West Lothian Council Executive
Thursday 4 December 2014	Pre consultation with parent council representatives – West Calder High School
Tuesday 9 December 2014	Pre consultation with community councils; community development trusts representatives and pupil council – West Calder High School
Thursday 8 January 2015	Start of Consultation
Monday 19 January 2015	Public Meeting -- West Calder High School
Tuesday 20 January 2015	Public Meeting -- St Paul's Primary School
Monday 23 February 2015	End of consultation period
Monday 2 April 2015	HMIE to produce report for the councils on the educational benefits of the proposals.
Wednesday 22 April 2015	Consultation report published and available on-line and in school.
May 2015 (Date of special Education Executive meeting to be confirmed)	West Lothian Council Education Executive consider report on consultation.
Process complete and consultees informed of decision.	

<p>هذه المعلومات متوفرة بلغة بريل وعلى شريط وبخط كبير وبلغات الجالية. الرجاء الإتصال بخدمة الترجمة على الهاتف 01506 775000</p>	<p>Information is available in Braille, tape, large print and community languages. Please contact the interpretation and translation service on 01506 775000.</p> <p>Text phones offer the opportunity for people with a hearing impairment to access the council. The text phone number is 18001 01506 464427. A loop system is also available in all offices. Published by West Lothian Council.</p>
<p>এই তথ্য আপনি ব্রইল, টেপ, বড় অক্ষরে এবং কমিউনিটির বিভিন্ন ভাষায় পড়তে পারবেন। অনুগ্রহ করে ইন্টারপ্রিটেশন অ্যান্ড ট্রান্সলেশন সার্ভিসের সঙ্গে যোগাযোগ করুন। টেলি: 01506 775000</p>	
<p>這份資料是可以凸字、錄音帶、大字印刷及社區語言的式本提供。請聯絡傳譯及翻譯服務部，電話：01506 775000</p>	
<p>ਇਹ ਜਾਣਕਾਰੀ (ਬ੍ਰੇਲ) ਨੈਕ੍ਰੀਨ ਦੇ ਪੜ੍ਹਣ ਵਾਲੀ ਸਿਰੀ, ਟੇਪ, ਵੱਡੇ ਫਿੰਟ ਅਤੇ ਸਮਾਜ ਦੀਆਂ ਹੋਰ ਭਾਸ਼ਾਵਾਂ ਵਿੱਚ ਉਪਲਬਧ ਹੈ। ਪਿੱਛਾ ਕਰਕੇ ਇੰਟਰਪ੍ਰੀਟੇਸ਼ਨ ਅਤੇ ਟਰਾਂਸਲੇਸ਼ਨ ਸੇਵਾਵਾਂ ਨੂੰ ਇਸ ਨੰਬਰ ਤੇ ਸੰਪਰਕ ਕਰੋ : 01506 775000</p>	
<p>په معلومات بریل (نومون کے رسم الخط)، ٹیپ، بڑے حرف کی شريط اور کچھ نئی زبانوں اور لہجوں میں دستیاب ہے۔ لوہاسرائیل انٹرنیشنل اینڈ ٹرانسلیٹنگ سروس سے ٹیلیفون نمبر 01506 775000 پر رابطہ قائم کریں۔</p>	
<p>Informacje te mogą być przelozone na jezyk Braille'a, dostepne na tasmie magnetofonowej lub wydane dluzym drukiem oraz przetlumaczone na jezyki mniejszosci narodowych. Prosimy o kontakt z Uslugami Tlumaczeniowymi pod numerem 01506 775000</p>	

If you wish a translator for the public meeting, please contact:

Sharon McCawley,
Forward Planning Officer,
Education Services,
West Lothian Civic Centre,
Howden South Road,
Livingston EH54 6FF. Tel: 01506 281859,
email: Sharon.mccawley@westlothian.gov.uk

Appendix 1

Consultee details and consultation arrangements

The School (Consultation) (Scotland) Act 2010 specifies in Schedule 1 the relevant consultees for a formal consultation on a proposal to relocate new school and establish, terminate or otherwise alter the catchment area of a school.

The following were consulted:

Pupils, Parent Councils, parents/carers, staff and trade unions of the primary and Secondary schools affected by the proposed catchment changes;
Community Councils within the catchment area of the schools;
West Lothian Council elected members;
MSPs
MPs
Affected West Lothian Council Heads of Service.

All the above were invited to respond to the consultation proposal by letter or e-mail. There was one point of contact for all written questions and comments.

The schools involved in the consultation were:

- Addiewell Primary
- East Calder Primary
- Mid Calder Primary
- Parkhead Primary
- Woodmuir Primary
- West Calder High School

Copies of the consultation paper were made available in all affected schools and in local libraries. The paper was also available on-line using the link: <http://www.westlothian.go.uk/west-calder-high-consultation>

A public notice was also placed in the local newspapers and was made available on the Councils website to bring the proposal to the attention of the wider public.

The consultation started on Thursday 8 January 2015 and finished on Monday 23 February 2015.

Public meetings were held:

Monday 19 January 2015 at West Calder High School
Tuesday 20 January 2015 at St Pauls Primary School.

Inspectors from Education Scotland, as part of the consultation process, prepared a report on the education aspects of the proposal after considering all submissions and meeting with appropriate consultees.

Copies of the report on the outcome of the consultation are available for inspection at the schools involved in the consultation (listed above) as well at local nurseries and libraries and on-line at: <http://www.westlothian.go.uk/west-calder-high-consultation>

Appendix 2(a)

Summary of written emails and responses

Date & Method	Contact	Comment Summary	Response
E-mail 08/01/2015	Neil Findlay MSP	<p>Great that West Calder community is being given something positive.</p> <p>West Calder has become a dumping ground so wholeheartedly applaud the proposal.</p> <p>Concerns regarding the access to the new school with solution being to take it directly from the A71 over the railway line.</p> <p>The proposal to take access down side of football pitch would be disastrous and inadequate.</p> <p>Harburn Road has become complete bottleneck adding more burden to the road network, more pollution and more pedestrian risk.</p> <p>Please take road in over the railways from the A71.</p> <p>Another concern is that site is popular with dog walkers, where do they go when new schools there?</p>	<p>Response 13/01/2015</p> <p>Comment noted.</p> <p>Comment noted.</p> <p>Comment noted.</p> <p>Comment noted.</p> <p>Comment noted.</p> <p>Comment noted.</p> <p>The overall layout of the site has still to be decided and the major public footpaths will be safeguarded wherever possible.</p>
Email 20/02/2015	Angela Constance MSP	<p>Write on behalf of constituents who have raised with me concerns over the proposal.</p>	<p>Response 02/03/2016</p> <p>Comment noted</p>

The timespan between receipt of notification of the proposal and the holding of the public meetings is very brief.

The Council indicated its intention to come forward with a school consultation at the Education Executive on 28th October 2014. Council officers held pre-consultation discussions with representatives of the parent councils of WCHS and associated primary schools and with representatives of the local community councils and community development trust to inform proposals. Approval to progress to formal consultation was given by the council's Education Executive on 16 December 2014. The committee report was made public the previous week and contained details of the public meetings scheduled to be held on 19 and 20th Jan 2015 some 11 and 12 days after the start of formal consultation and more than a month from the date at which the consultation proposal first became available to the public.

There was no interval between the public meetings. There were no meeting held in other areas of the catchment zone.

No intervals during public meeting. The council held 2 public meetings to cover both halves of the elongated geographical catchment area of West Calder High School. I should also point out that this arrangement had been discussed at the pre-consultation meetings referred to above and was accepted as reasonable.

Other interested parties have expressed a concern that only pupils, parents were aware of the proposal and the planned meetings.

Consultees for a school relocation are statutorily prescribed in section 3 of schedule 2 of Schools (Consultation) (Scotland) Act 2010. The council has complied with this requirement and other than pupils, parents, consultees included, pupils, staff, trade unions, community councils,

MSP's, MP's and community partners. The School consultation is noted on the council's website and public meetings are advertised in the press, again, a statutory requirement. I would point out that there was a good turnout at the public meetings which included members of the wider public and local residents rather than only parents of children from local schools.

Loss of community recreational facilities including all weather sports pitch, a full sized grass football pitch, bmx bike track, green areas and pathways.

It would be a technical exercise to ensure that current uses are re-provided or indeed enhanced through the provision of the extensive modern facilities that a new school would require i.e. outdoor sports provision including grass pitches and all-weather sports pitch, suitable tracks and walking routes, improved green space management, and replacement of tree planting as required. The council is aware of local concerns over the site and would wish to work with the local community and local residents to ensure that any new school project was sensitively developed to take these into account.

Loss of established woodland and the impact on wildlife habitat.

As above

Loss of part of the award winning Polbeth and Parkhead Woodlands.

As above

Loss of no 13, West Calder Walking trail.

As above

Loss of opportunity for children to play in a natural environment.

As above

Safety issues concerning the

Given the mining history of

old mine workings in the area and the associated building requirements, the need for mine workings stabilisation works to facilitate safe redevelopment of the site and possible foundations comprising reinforced concrete rafts.

West Lothian it is well known that extensive survey and ground remediation/stabilisation is required for most building projects – the provision of a new school is no different in this regard and full technical assessments will need to be met for planning permission to be given.

Traffic congestion at main commuter hours and road safety.

Potential increased traffic impact on access to and from West Calder Train Station.

This is the favoured solution for access to the new school site, i.e. directly from the A71 over the railway line rather than from the south. While utilising or improving access from Harburn Road via the cemetery is not the access option favoured by the council, it does need consideration as part of the overall access options for the project.

Access for construction traffic and whether that traffic would be using the track alongside the new cemetery thereby disrupting funerals that are taking place. This track is partly owned by the Council.

While utilising or improving access from Harburn Road via the cemetery is not the access option favoured by the council, it does need consideration as part of the overall access options for the project. It is recognised that this suggestion does focus the local community on the impact of what could be desire lines to the new school location and it is essential to be open with the community on this matter. The access solution will clearly be an important aspect of dealing with traffic flow at key points in the day but also in relation to construction of the new school. All of these matters are being carefully considered through the formal consultation and will also be relevant for determination of the planning application

Email		Response
22/02/2015	Parkhead Primary School - Parent Council	23/02/2015
	<p>We are delighted that the high school is being rebuilt. There are a number of positives this will bring.</p>	<p>Comments all noted, and issues will be addressed within the Outcome report to Education Executive.</p>
	<p>For our current pupils it will mean their high school learning experience will be enhanced due to improved school facilities.</p>	
	<p>We are happy that the high school is being built in close proximity to the primary school. This will help make for a smooth transition for the pupils moving to secondary school. We hope it will also mean more frequent use of the facilities by primary staff and pupils.</p>	
	<p>Overall we support the decision to rebuild the school and with the proposed site to the east of Parkhead Primary.</p>	
	<p>Would like some clarification on the routes available to the children ensuring safety and away from main traffic.</p>	
	<p>A natural walking route is likely to be via Harburn Road (no1-32) and Harburn Lane and past the primary school. This is already hazardous for the 400 primary school children and their carers with several near miss accidents having already taken place in the last 12 months.</p>	
	<p>A significant increase in pedestrian activity of several hundred more school children will make the Woods Garage/police/library</p>	

junction, Harburn Road and Harburn Lane area extremely dangerous and hazardous for pedestrians. We would welcome the opportunity to meet with Head of Traffic Management at West Lothian Council to discuss.

Concerned that parents will drop off in the vicinity of the primary school further adding to traffic issues.

We feel it would be beneficial when considering access arrangements for the new high school that primary school traffic may also share the same parking/drop off points and revised entry/exit routes specifically for the primary school be considered. Where the main entrance to the high school will be and any potential to route Parkhead traffic through this entrance.

We are more than happy to be involved in the consultation process and feel that Parkhead Primary School should be a stakeholder throughout given our close proximity to the high school.

We would welcome opportunities for both the head teacher and ourselves to be kept up to date as plans progress.

Public Responses

E-mail
08/01/2015 1

Interested to know if new high school will have a

Response
13/01/2015

Yes there will be a swimming pool in the new school; it will

		swimming pool in it?	either be the same size as existing or possibly bigger.
Email			Response
09/01/2015	2		13/01/2015
		The map annexe A appears to show an area which lies to west of catchment.	This was a misprint and the appropriate map has been put in place, thanks for highlighting.
		Section 4, the proposed site is described as being accessible from an existing track north of Burngrange Football ground, the football ground in question is Hermand Football ground.	Comment noted.
Email			Response
09/01/2015	3		13/01/2015
		Have two children attending Parkhead Primary and both will benefit from a new high school.	Comment noted
		Need for a new West Calder High school is long overdue. Its badly dated and needing replaced.	Comment noted
		Proposal looks good and the whole community will benefit from being able to use sports facilities.	Comment noted
		Negatives are access proposals, Harburn Road. Parking on this road and the road itself is insufficient.	Comment noted
		The road beside West Calder United football ground is tree lined; I presume these will all have to be taken down.	Comment noted
		It is also next to residential areas of Hermans Gardens and part of Parkhead Crescent, terrible place to live if a road to the high school is built there.	Comment noted
Email			Response
12/01/2015	4		21/01/2015
		You are looking at a completely new location that currently has no access roads and requires building	Comment noted

warrants, access roads and planning.

There is currently a location earmarked in East Calder for a high school. This would have all the sufficient surrounding building works regarding access in place and reduce the number of transportation required to the school.

Comment noted

Have you looked at where the percentage and future percentage of pupils will be travelling from? Costs effectively if you're transporting more buses to and from one area, could this not be reduced by reversing and transporting East Calder through to East?

Base school forecast table inserted showing that there are more pupils currently and expected to be in the East of the West Calder High School catchment area.

The development plan for West Lothian proposes 5,000 new houses across the Calder's. This would require two sited secondary schools 1,100 pupils at West Calder and 1,210 pupils at East Calder.

Have you investigated the cost of having an already earmarked site with building works and access roads in place than starting from scratch?

The proposed high school site in East Calder is not in West Lothian Councils ownership and it would be sometime before that site could be made available. Senior officer have already reviewed the site options and selected the land at Parkhead because of its deliverability.

What are the current plans for East Calder pupils if you have not included them in your investigation as a plan is in place to have a school in the local area?

The proposal for a new high school in East Calder remains unchanged by the need to replace and relocate West Calder High School.

Email
13/01/2015 5

Response
14/01/2015
Comment noted

Strongly object to the proposed site for relocation. The site includes community, recreational facilities and is well used by my children and other local children, youth football teams and families.

Taking these facilities away from the local community would surely be detrimental to the health and social wellbeing of all who use them.

Site includes established woodlands and thousands of new trees planted over the past months and years. Parkhead Community Woodland Phase 1, 9000 trees planted over 5.85 hectares and Parkhead Community Woodland Phase 2, 3,296 trees planted. I can't believe the council is unable to find a more suitable site that would not involve the uprooting or taking down of thousands of tree not to mention to effect on wildlife.

Comment noted

The site includes a walking trail and entire area of proposed site is well used by dog walkers and other enjoying outdoors. Seems reckless and irresponsible to deny local community the option of outdoor exercise. Has consideration been given as to how this path can still be provided to members of the local community who use it on a daily basis?

The overall layout of the site has still to be decided and the major footpaths will be safeguarded wherever possible.

Email
14/01/2015 6

It's come to our attention through high school pupils about new proposal why has this not been in the hands of local inhabitants, especially Harburn Road, Hermand Gardens and Harburn Drive. Are the council trying to get it done without local opposition?

Response
20/01/2015

West Lothian Council followed all statutory requirements in terms of who and when to consult on the proposal to relocate West Calder High School. The council is aware of the traffic issues and doesn't want to add to any current problems. In terms of detailed neighbour notifications, this would only be undertaken as part of the planning application process.

Will construction traffic come down Harburn Road to gain access and will the track at the side of the new cemetery be considered if yes that is surely bad taste.

The route for construction traffic would need to be carefully considered and regulated without any significant disruption to existing households. West Lothian Council would therefore seek to introduce access for construction traffic from the A71.

What about the old mine shafts and tunnels, it's documented that a horse fell down a mine shaft in proposed area, and what about the old abattoir that collapsed because it sank. Where would new playing fields being proposed?

Ground stability on the site is being investigated to avoid such occurrences.

What is wrong with the field to the East of current school to use it would retained as well as traffic access perhaps a new entrance could be made at East end of field?

The eventual location of the school building and access road are still to be determined and therefore the exact layouts of playing fields are not known at this time.

The field to the East of the current West Calder High School is not in council ownership it has been allocated for housing use since West Lothian Local Plan was approved. The cost of acquiring the site would be high and would reduce the funding available to pay for the school itself.

The whole new proposed area has new tree planting with thousands of new trees will his be dug up?

The exact location of the building and access roads haven't been decided and therefore we cannot determine how much of the new trees planted will be affected. However not withstanding this, the council would replace existing planted trees as part of the overall development of the larger site area.

Email
15/01/2015 7

Why can't the land to the East of the current school not be used for the rebuild?
There is no mention of any

Response
15/01/2015
The land is not in the ownership of the council. There would be a significant cost and a potential time

constraints on this option in the consultation document?

There is considerable concern about the destruction of the newly planted West Calder Woodland, which has been wholeheartedly embraced by the local community. The trees are beginning to establish themselves and the waste of money in their destruction is indicative of a lack of forward planning and joined up thinking.

delay if this site was to be acquired. Part of the site is also still affected by proximity to the ethylene pipeline. The option of considering the potential rebuilding of West Calder High School has only become known after the planting took place. The council would need to put in place alternate planting to replace any loss. The detailed design process would need to be mindful of protecting as much as possible of the improvements to the environment in this area as possible and further community consultation would be an essential part of making the overall proposal a success.

It is not entirely clear how access to the school will be established. Could this be made clear please? I trust that access would not be down the track at the side of the playing fields and the Hermand Park Cemetery. Should this be the case there would be a need to review and probably replace the facilities that are serving the community at Hermand Estate.

The preferred access arrangements would be to introduce a new pedestrian and vehicular access from the A71 to the proposed school site. The final detail of this arrangement has still to be finalised but will be known before a decision on the proposed school relocation is made by the Council.

Email
16/01/2015 8

Is it true that the council will destroy part of Parkhead community woodland which has over 3000 trees planted last spring, take away the local football pitch and the kids kick pitch?

Response
21/01/2015
The exact detailed layout of the access road has still to be determined and West Lothian Council would be obliged to minimise tree loss and replace any felled and reposition any football or children's playing areas.

Email
16/01/2015 9

I wish to register my objection to the new high school. It's to do with the means of access. I would invite the council to

Response
20/01/2015
Comment noted

come and witness the congestion and selfish parking on Harburn Road and explain how adding the extra traffic of a 1000 pupil high school and its staff is going to make this better.

Something has to be done about this road. Fear its only matter of time before there is an accident or a child is run over. Have witnessed lorries and vans driving along the pavement at the library because the traffic at the lights is on the wrong side of the road due to selfish parkers. Not to mention the pollution, fumes and noise to the residents. If you built a big roundabout on the A71 past Daks and a road over the railway this would work.

Comment noted

Email
17/01/2015 10

Reponses
27/01/2015

Refer to the point that the site can currently be accessed from the South. Do you mean on our access road that we have to jointly maintain with the council? We reside at Whauphill House and our access road is from Harburn road as shown on your map.

West Lothian Councils preferred option to access the site from the A71 with an appropriate bridge over the railway line.

Points 4.7 a new vehicular access road would have to be constructed from Harburn Road along the line of an existing track north of Burngrange Football Ground. Are you referring to our access road?

As noted access from Harburn Road would not be favoured option for the council as this would add traffic to the Harburn Road and A71 junction.

If this was going to be the new vehicular access road do you intend for traffic to come directly in front of our property gate to turn down what is presently a footpath? This would cause noise pollution, light pollution from buses and vehicles shinning headlights into our property

As noted access from Harburn Road would not be favoured option for the council as this would add traffic to the Harburn Road and A71 junction.

on dark winter mornings and evenings.

Point 4.7 this access is fully controlled by West Lothian Council and no third party agreements are necessary to implement this access. As stated previously we have to jointly maintain the access road with the council from the top gate down to the house. Stayed there for 30 years and have seen few changes with football ground being established, car park installed with no notification. In 2013 the council agreed we should not be held to maintain this part of the road which is in front of the gate at our road end. Our title deeds had to be changed through our lawyer at great expense. If you are proposing to change our access road for public use are the council going to pay for our legal costs to change our deeds again? other points to be

West Lothian Council are not proposing to change your access road, the council are aware of the difficulties that would be associated with upgrading this road and would seek to avoid this.

How will we get access to and from our property at peak times?

West Lothian Council are not proposing to change your access road, the council are aware of the difficulties that would be associated with upgrading this road and would seek to avoid this.

Are you proposing this would be changed to highway specifications for two way traffic?

West Lothian Council are not proposing to change your access road, the council are aware of the difficulties that would be associated with upgrading this road and would seek to avoid this.

What measures would be put in place to ensure access to our property at all times?

West Lothian Council are not proposing to change your access road, the council are aware of the difficulties that would be associated with upgrading this road and would seek to avoid this.

If you are intending to use our access road what width would this road be?	West Lothian Council are not proposing to change your access road, the council are aware of the difficulties that would be associated with upgrading this road and would seek to avoid this.
How would it affect our existing water pipe which is not at any great depth?	West Lothian Council are not proposing to change your access road, the council are aware of the difficulties that would be associated with upgrading this road and would seek to avoid this.
Would we yet again be unconvinced through burst pipes, loss of mains water supply, and replacement of pipes?	West Lothian Council are not proposing to change your access road, the council are aware of the difficulties that would be associated with upgrading this road and would seek to avoid this.
What measures would be put in place so that my access would remain clear at all times?	West Lothian Council are not proposing to change your access road, the council are aware of the difficulties that would be associated with upgrading this road and would seek to avoid this.
Is there going to be a new drainage and guttering system along the length of the road, taking the water from the road away from our property?	West Lothian Council are not proposing to change your access road, the council are aware of the difficulties that would be associated with upgrading this road and would seek to avoid this.
Will there be lighting on the road?	West Lothian Council are not proposing to change your access road, the council are aware of the difficulties that would be associated with upgrading this road and would seek to avoid this.
Would there be measures in place to stop continual use of the road being used as a race track by youths and others out with school hours?	West Lothian Council are not proposing to change your access road, the council are aware of the difficulties that would be associated with upgrading this road and would seek to avoid this.
If using this site would this	It is not known the exact

mean the destruction of the new forest?

location of the building or access road therefore we cannot determine how much of the new trees planting will be affected. However notwithstanding this, the council would replace existing planted trees as part of the overall development of the larger site area.

Are you proposing on putting double yellow lines to stop locals parking their cars on the street to enable school buses and traffic to pass safely to access our road?

West Lothian will be seeking to avoid taking access from Harburn Road and if a planning application is made for the school this would require significant consideration given to all potential routes, shortcuts to the school and potential disruption that this could cause for local residents.

Email
16/01/2015 11

Response
19/02/2015

Based on today's school roll and pupil home address data, how many children would be considered within walking distance of the proposed new school site? Could this data also be split with those approaching from the East side of the school i.e. Polbeth area and those from the West side i.e. West Calder. How many children in the West side reside on the land adjacent to proposed new school, which includes addresses Harburn Road, Harburn Lane, Parkhead Crescent and Gardens?

There are 863 pupils recorded as attending West Calder High School at the beginning of the 2015 school session. Some 475 are currently receiving transport assistance to the school, 343 from East of the current school site, the balance 132 pupils from west of the school site. Thus 388 pupils currently live within walking distance of the school (via an appropriate safe walking route to school). The change in secondary school location would result in some 42 pupils from the Parkhead Primary School catchment being brought within walking distance i.e. all current West Calder households would be brought within 2 miles of the school. Thus some 433 pupils would remain in receipt of transport assistance and 430 pupils would be within walking distance. In addition the proposed location would also support walking from the new residential development

proposed at Mossend and Cleugh Brae. I've attached two diagrams to illustrate how the distances to and from West Calder High School/ Parkhead Primary School change.

Based on the current school roll how many children regularly use the school transport provided as they are not considered within walking distance? How many school transport vehicles does this bring to the school for start of each school day?

Enough to fill current turning circle with some vehicles turning in out the way. I've counted 11 buses with some minibuses and taxis. Some 474 pupils currently have transport assistance. There will be other children using same buses but who pays a fare. This number would increase as new housing progresses in East Calder.

What progress has been made with the rail line companies to progress the discussions on bridge replacement and possible upgrade related to this proposal, due to electrification of the line (the current single lane bridge is within the community garden land and could provide a direct access route to the proposed new school.

Officers from the council are continuing to explore the options for providing an access across the railway line. A number of potential sites are being looked at and site investigations are underway. The location of any bridge will be informed by the result of the site investigations and number of other factors including the optimum location for creating a new access point to the A71. One of the options being investigated is the replacement of the existing pedestrian bridge with a new vehicular and pedestrian bridge.

Do you plan to conduct a catchment review for West Calder High School in the next 5 years?

There is potential for a school consultation on catchment areas in the next 5 years as during this time frame the scale of development at East Calder is likely to be known.

Can we see the projected school roll figures for the period 2014-2024?

Figures supplied.

What are the plans for the land to the North of Parkhead Primary School as identified

Could be involved in potential access to the high school site. Land for school would

as map appendix C, which stretches from the edge of the playground to the rail line and are currently used as playing fields at the primary school?

need to be re-provided.

Do you propose to reinstate an old footpath alongside Parkhead Primary School which runs to the west side of the school and rises up steps to meet the A71 at the side of the A71 rail bridge?

Less attractive option given steps - but all access would be considered.

In connection with item 4.7 what are the plans at the Council in connection with roads infrastructure, for any proposed building development for residential and business, which may meet Limefield Road adjacent to the DAKS building. And will this become an entry/exit route to possible new housing estates?

No plans unless this is meaning potential access to Cleugh Brae and across to Gavieside Farm.

In relation to section 4.8 please can you confirm what the improved footpath and cycle routes from Polbeth and West Calder are - what is already planned?

Prior to the potential for the site to be used for the school the council had already secured funding to upgrade the footpath from Polbeth to West Calder. That route crosses the site from east to west. Improvement works will commence in the near future. When complete the path will provide a pedestrian and cycle route from Polbeth to the proposed school site. The path improvements are separate from the school project.

Item 5.6 refers to access arrangements for the proposed new school and the new high school will be accessed separately - please can you provide further details on this statement?

The statement was included to clarify that there is no intention to take vehicular access to the new school from the existing vehicular access to Parkhead Primary School.

Is there any scope to improve the existing traffic lit junction

No the physical constraints prevent anything major.

	<p>at library/police station/woods garage in West Calder?</p>	<p>Transport Officer is looking at minor tweaks and adjustments to get best for both pedestrians and traffic.</p>
	<p>Would West Lothian consider making the road speed limit 20mph along the A71 and local side road through West Calder and Polbeth?</p>	<p>Section of A71 at new junction would be a 20mph limit. But area wide 20mph limits in Polbeth are not on the table and are not directly related to moving the school location.</p>
<p>Email 17/01/2015 12</p>	<p>Recently become aware of the proposals to build a new West Calder High School. This was by word of mouth rather than direct correspondence from the council. Heard that proposals have an option to build a vehicular access off Harburn Road along a track which runs between the West Calder United Football park and our house. Can you confirm this?</p>	<p>Response 21/01/2015 West Lothian Council preferred access from the A71 would mean that there would be little change to the traffic volumes and there may be an option to take access from the proposed new secondary school road to Parkhead Primary School.</p>
	<p>If this is correct we are annoyed as we would have expected the courtesy and some correspondence from yourselves. Can we have some extra details on this vehicular access. If this road is built it will obviously have a major effect on our environment so it is important that we know what exactly is proposed in order that we can make informed input to consultation process.</p>	<p>West Lothian Council followed all the statutory requirements in terms of who to consult on the proposal to relocate West Calder High School. The Council is aware of traffic issues and doesn't want to add to any current problems.</p>
<p>Email 18/01/2015 13</p>	<p>The council executive considered a report advising of proposed changes, Please advise as to how I can obtain a copy of this?</p>	<p>Response 21/01/2015 Sent Consultee West Councils Executive report and minute.</p>
	<p>A senior officer review has been carried out and has</p>	<p>As explained at Monday's public meeting the senior</p>

identified constraints, please advise as to how I can obtain a copy of this review?

officer review was conducted at a meeting and did not take form of a written report. West Calder High School currently has capacity of 1100 pupils and the proposal would be to relocate and replace the school with the same level of capacity. (Sent consultee Education Executive base Forecast 2012 report.

Para 4 and 5 discuss proposal for new site please advise as to what feasibility studies have been carried out regarding the various possible sites investigated. Does the councils budget include sufficient sums over the various years for the proposed new high school?

This Exercise was undertaken by senior officer and verbally reported. As such there is no specific document regarding the site search exercise. The consultation document refers to in paragraph 3.5 the finding mechanism for the proposed new school and as noted at the public meeting some £20 million would be the government share and the council would be providing a further £10 million.

Last paragraph records the next steps forward from council executives point of view, i.e. report regarding the location for the new high school and the estimated cost required to build same. Please advise when these reports will be available to the public?

Assuming that you are referring to the committee minute when you state that "a report regarding the location for the new high school" this report is the school consultation proposal paper which you should've received last night at the public meeting. If you did not collect one of these documents from last night's meeting these are available online. The overall budget for a replacement West Calder High School as noted above is expected to be some £30 million.

Email
18/01/2015 14

There have already been instances of contractors/site surveyors accessing the community garden site to undertake measurements for this project without any

Response
22/01/2015

I can advise that the council has not granted permission to surveyors to access the land leased by the market garden. This this has occurred then please accept our apologies,

attempts at contact having been made to charity members. This is very unsettling as it leaves us wondering what is being proposed and generates fear that the proposed works will not take into consideration the views of the local site users, who have many worthwhile suggestions and proposals to ensure the project is a success.

Can the committee please explain what will be done to ensure that the local community are involved in every relevant stage of the investigation, rather than us finding out that sites have been accessed without permission after the fact.

Email
19/01/2015 15

What other sites have West Lothian scoped for the potential siting of the new high school?

Please provide written rationale as to why these sites were not suitable?

Should the current proposed site be deemed "unsuitable" for the school following soil samples/digs etc. E.g. issues mine works/shafts etc.; please elaborate as to what alternative plans the council have for the building of a new high school?

At the public consultation at West Calder High School this evening 16/01/2015 the footprint of the land for potential siting of the school

our contractors will be contacted to reiterate this should not occur until arrangements are in place. Colleagues in Property Management have I understand met with members of the community market garden to discuss access arrangements and are I understand attending a meeting with the management group on Monday 26th January 2015 to discuss the new High School proposals.

The Council is as evidenced by the recent public meetings committed to the engagement with the local community and will where appropriate continue to do this to ensure the success of the project.

Response
26/01/2015

An OS plan was sent to consultee showing the location of the sites considered in West Calder for the siting of the new high school along with the criteria for assessing them.

Notes highlighting the need for clarity of ownership to deliver the development were also sent to consultee.

Project would not progress as unlikely to be able to secure an alternative site and deliver the development by end of March 2018.

No specific location within the site has been determined for the siting of the school, any plans at this would be purely indicative to illustrate the size

was outlined. When pressed by audience as to the existence of plans which would show the proposed position of the school within the aforementioned footprint the project manager from the Council clearly stated that no such plans existed which would show the proposed position of the school within the footprint. Please provide definitive clarity that no plans, drawings, schematics or similar exist with the council, surveyors, Architects, potential builders or other relevant interested parties. My interest in this matter stems from the project managers verbal statement at the public meeting whereby he was able to point on an aerial map of the proposed site and allude to the fact that he believed the land to the south of the railway line up to the land near the border of current footpath which runs from Harburn Drive to Polbeth would likely be utilised. surveyors, Architects, potential builders or other relevant interested parties. My interest in this matter stems from the project managers verbal statement at the public meeting whereby he was able to point on an aerial map of the proposed site and allude to the fact that he believed the land to the south of the railway line up to the land near the border of current footpath which runs from Harburn Drive to Polbeth would likely be utilised.

Please provide summary of meetings and relevant minutes of same in respect of dialogue between Network Rail and West Lothian Council regarding the

of the school building and grounds in comparison to the wider land ownership.

There have been two meetings with Network Rail, neither of these meeting have been minute. The first meeting was introductory in nature with both Network Rail

potential for access to the proposed site via the A71 and the need for a new railway bridge?

and the Council, setting out the framework for their respective projects. It was agreed that there may be some synergy and that retained engineers from both organisations should look to progress matters. There was a subsequent site meeting where staff from NR, the council and engineering contractors looked at the potential location for a bridge and an access onto the A71. There has been no substantive progress since then as the preferred location for the bridge will be informed by site investigations which are currently underway.

Should responses to the above questions not be forthcoming I would like them to be considered and progressed under the Freedom of Information Act.

Email
20/01/2015 16

Response
21/01/2015
Comment noted

The idea of a new school sounds fantastic. New site would be good for the people of West Calder.

I think that accessing the school through Harburn Road is unrealistic. Mornings and afternoons around the school are very congested, often people park without any concern for other vehicles passing them. The school buses often struggle to get along Harburn Road, regularly having to mount the pavement where children walk.

We are aware of the current pressure on Harburn Road and West Lothian Council would favour options that do not add additional problems. The Council would prefer to locate the new school building in the fields close to the railway line which would remove the new building from existing dwellings. The route would need to be carefully considered and any significant disruption to existing households needs to be avoided and the council would therefore seek to introduce access for construction traffic from the A71.

<p>There have already been many near misses with cars driving too fast, thoughtless parking.</p> <p>A71 there seems to be 2 possibilities for access from A71. The current bridge over the railway would access the new school via the back of Parkhead Primary. This would mean taking the current grass area away from the primary kids and would have to be replaced elsewhere to give them somewhere to play during break times.</p>	<p>Comment noted</p> <p>West Lothian Council is currently working closely with Network Rail on bridge options therefore it is still unknown the exact access that will be used therefore we cannot determine how much of green area will be affected however withstanding this the council will replace any area as part of the overall development of the larger site area.</p>
<p>The other option would be to access it by upgrading the current footbridge over the railway. I believe this would be the best option, keeping the traffic away from Harburn Road area.</p>	<p>Comment noted</p>
<p>If both schools were accessed from the A71 the current car park for the primary school could be closed, reducing the traffic in Harburn Road and stop buses from driving along this tiny road.</p>	<p>Comment noted</p>
<p>There would also need to be thought given to the walking route for children getting to the school from Polbeth, walking along the side of the busy A71 would be very dangerous.</p>	<p>Comment noted</p>
<p>The other issue is volume of traffic on the A71, it's very congested in the morning and very often the traffic can stretch from the library traffic lights back to and past the Burngrange area of the village in the morning. The sequence of both sets of traffic lights in West Calder would need to be looked at to reduce the current congestion and thought given</p>	<p>Comment noted</p>

to how traffic would turn right into and out of the new school access.

Email
20/01/2015 17

Response
21/01/2015
Comment noted

Resident in Hermand Gardens West Calder which is adjacent to the proposed site.

Comment noted

I fully support the location, makes good sense to create a state of art education and community amenity in a single location. The fact that the existing primary school will be adjacent and can be included in an overall education plan for the area makes good sense.

Such a development will be positive for the village.

Comment noted

Only concern is issue of access. To create permanent access along the lane from Harburn Road past the new cemetery is in my mind a major mistake.

The exact detailed layout of the access road had still to be determined.

Existing road infrastructure at the junction of the A71 and Harburn Road is already a major bottleneck; this development will make it totally unacceptable.

The preferred access being from the A71 would mean there would be no change to the traffic volumes and there may be an option to take access from proposed new secondary school road to Parkhead Primary School. This may alleviate some of the traffic movement at this junction.

The alternative of building a new rail bridge would appear a more acceptable solution as works will have to be done anyways as the rail line is electrified.

Comment noted

Email
20/01/2015 18

Response
27/01/2015
Comment noted

On the upgrade of the footpath and so called cycle path which I believe is imminent are you aware that

a third party owns a large strip of this land, i.e. Weslo Housing which has not been adopted by West Lothian Council which runs from Parkhead Primary School to the start of the path leading to Polbeth.

The Council spent £183,000 upgrading the open space in that area and planting young trees etc. which have been uprooted, what a waste of council money. You are going to destroy a lovely environment which you created and people enjoy and spoiling people views, causing disruption, noise and mess.

Comment noted

Email
20/01/2015 19

Response
21/01/2015

Would like to thank West Lothian Council Officer for their clear outline of the proposed relocation of West Calder High School.

Comment noted

I whole heartedly support the proposal of a new build school as opposed to refurbishment of existing school.

Comment noted

Son currently in P3 at Parkhead Primary School, so proposed new school is very exciting prospect and his education will substantially benefit from a state of art school.

We are glad that the proposal will benefit you and your family.

Construction of a purpose built school will significantly enhance the learning opportunities for all pupils.

Comment noted

Location of the school within West Calder will enrich the local community by use of the new school facilities and will benefit local businesses from the school trade.

Comment noted

Access should be taken from the A71 and advance construction of a new bridge over the railway should be in place prior to school construction works commencement.

Comment noted

Road traffic baseline studies should be undertaken to allay concerns over the impact a new roundabout on the A71 would have on traffic congestion.

Comment noted

Loss of existing parkland should consider along with at least 2 for 1 tree replacement policy, new facilities such as swimming pool, tennis court, skate park so that children have new amenities.

Comment noted

Encouraging ground site investigation works have already commenced. Even if mine workings are discovered, it's technically feasible to undertake ground stabilisation works to minimise the risk of future ground settlement.

Comment noted

I assume that utility service checks have already been undertaken and that this information should be passed on to design consultants.

Comment noted

Have concerns that the school is not being sized to account for future growth outside the Gavieside catchment area. In particular the land to the north of Gavieside was identified as potential housing and recent planning application have been submitted for the land to the North of Oak Bank Cottages and Five Sister Business Park.

Comment noted

Agree with presenters that it is achievable to design, procure and build a new

Comment noted

school by March 2018
 however the design process
 needs to commence ASAP.
 This will only be achievable if
 the scope, programme and
 budget is clearly defined and
 the client organisational
 structure is streamlined to
 have 1 project manager with
 the authority to make project
 decisions.

Route for access of the A71
 can be through the council
 owned land to the north of
 the railway however
 agreement needs to be
 reached ASAP with the
 tenants of this land to ensure
 that the route is feasible and
 not subject to legal challenge.

Comment noted

The bridge over the railway is
 feasible to be built off line
 and craned in during evening
 and/or weekend railway line
 possessions. Abutments can
 be built out with the Network
 Rail construction exclusion
 zones to limit possessions
 required to construct the
 abutment foundations.

Comment noted

Although technically feasible
 to refurbish the existing
 school, my views is this
 would not be value for money
 and would not provide the
 council with the desired
 modern facility.

Comment noted

Legal agreement to purchase
 private land was a non-starter
 and has correctly been ruled
 out. I too have experience of
 what should be simple legal
 agreements taking over 3
 years to resolve.

Comment noted

Presence of Ineos pipeline
 eradicates option of building
 new school in existing playing
 fields, decant pupils,
 demolish existing school and
 build new playing fields.
 There is no room available on
 site to make this a feasible

Comment noted

option.

Refurbishment risks programme delays and cost increases from unforeseen activities, e.g. lack of record drawing detail information, presence of asbestos etc. Although advance asbestos surveys can be undertaken, this would give an indication as to the likelihood of asbestos presence but would not categorically confirm there is no asbestos in the 1965 building.

Comment noted

Email
21/01/2015 20

Response
21/01/2015

Bringing the high school back into West Calder is a great thing for the village; this can only bring benefits to West Calder by having such a large school with new facilities for the public to utilise.

Comment noted

Concerns over the road access to the new site. The village is busy due to the A71 being a main road between Kilmarnock and Edinburgh.

Comment noted

Main concern is in relation to point 4.7 in proposal paper. Proposed options for the access to the school are a real concern. The current access to Parkhead Primary School is just off Harburn Road is limited by car at present and there are only approx. 400 pupils and picking up there is bad enough congestion already at start and end of school days. This congestion then backs up onto the A71 causing the traffic in the village to come to a stop in some instances.

West Lothian Council are aware of the current pressures throughout West Calder and Harburn Road and would favour options that do not add additional problems. The preferred site access would be from the A71 which would mean there would be little change to the traffic volumes at present. There may be an option to take access from the proposed new secondary school road to Parkhead Primary School. This may alleviate some of the traffic movements at this junction.

To suggest the main access to the school being accessed via Harburn Road and then north of the Burngrange

Football ground this would only lead to more congestion on these small roads. To add a school which may hold up to 1,100 pupils, teachers and staff travelling to work approx. 10-15 school buses and then parents dropping off and picking up starting to use this road and area this can only lead to major congestion in the quiet residential streets of Harburn Road and Parkhead area of West Calder.

Safety aspects to both the children who will attend the new high school and those or attend Parkhead Primary School. Harburn Road is a main route access for residents to The Glebe, Harburn Drive, Parkhead Cottages, Parkhead Crescent, Parkhead Gardens and Hermand Gardens, not to forget the residents on Harburn Road itself.

Comment noted

As a parent I am not happy to think my children will be at more risk trying to cross Harburn Road on going to and from primary/secondary school.

Comment noted

To make the school more accessible I feel that the only option is to gain access from the A71. I appreciate that this will cost more money and may take a bit more time to gain third party agreements but in the long run for this school to work well with the village, the traffic management needs to remain away from the village if possible. If a new state of the art school is to be built, a well thought out access road needs to go with this.

Comment noted

The current West Calder High has its own separate

Comment noted

entrance onto the A71 and this works well. I have to travel past this during peak times and it's busy and traffic slows but this works well and the traffic keeps moving. Children are then dropped off within the school grounds and parent don't have to walk anywhere other than up to school. If access was to be via Harburn Road for the new high school parent aren't going to drive all the way round in circles to drop them off if there's going to be congestion, they will drop them near the primary school so that they can walk along Harburn Road into Harburn Drive and past the front of the primary school. Residents in these houses will not appreciate an increase in the number of children walking past their houses at school start and finish.

Harburn Drive and past the front of the primary school. Residents in these houses will not appreciate an increase in the number of children walking past their houses at school start and finish.

Comment noted

West Calder is a main village on the route to Edinburgh/Kilmarnock with services people may stop to use but if the village then becomes a traffic jam due to the additional school traffic, people will probably not stop and just keep on going. This will then affect local businesses that are already affected by modern day life such as internet shopping.

Comment noted

I do feel pleased about the move of the high school back into West Calder and look forward to seeing pupils and local community benefiting

Comment noted

from the new modern facilities the school will offer. I do think that access from the A71 should be considered to a great degree as I feel that this will help the new facility by accessible to the local community and not put people off with long unnecessary route to gain access by car.

Email
21/01/2015 21

My house backs onto the proposed site, I am somewhat taken aback that I didn't receive direct notification of the proposal and only found out recently through word of mouth.

The information provided is scant to say the least and saying the school will be to the North of the site that is couched in a 'site conditions' clause.

Problems with site access can't be overstated. Increased capacity vehicular access will be a major headache if direct access can't be achieved from the A71. The A71 access should be given more work not given up on.

Should the access to be from Harburn Road/Parkhead I am concerned that areas such as Hermand Gardens, Parkhead Gardens will be used as car drop-off and pick up points for pupils thereby resulting in some very unhappy residents in these areas. Hermand Gardens will be particularly convenient to traffic given it has a pedestrian path access to the track which would become the main road into the school. It is essential therefore that adequate

Response

21/01/2015

West Lothian Council followed all the statutory requirements in terms of who to consult on the proposal to relocate West Calder High School. In terms of detailed neighbour notifications this would only be undertaken as part of the planning application process.

If a planning application is made for the replacement school then there would need to be significant consideration given to all potential routes, shortcuts to the school and potential disruption that this could cause for residents.

West Lothian Council will be seeking to avoid taking access from Harburn Road with the preferred access being from the A71. This would mean that there would be no change to the current traffic volumes with an option to take access from the proposed new secondary school to Parkhead Primary School. This would also alleviate some of the traffic movements at this junction.

parking and dropping off/picking up facilities should be provided at the school. If the traffic situation in Hermand Gardens became particularly disturbing then I would ask the Council to give an understanding to close off the footpath.

The present path/track between Parkhead and Polbeth used by walkers/dog walkers will this be retained with access through the new site?

The school should be located as far as possible to the North of the site as most visitors to the cemetery will no doubt be looking for quiet contemplation.

What is to happen to the tree planting that was undertaken at the back of my house, I think it was around 4,000 trees last year. Given that area is within the proposed site it sounds like there is going to be wasted resources if they are built on.

I can appreciate the need for the school and why this site is being considered - but taking into account the scant information available at this time I believe access to the site should be from the A71 despite its difficulties, which I don't believe to be insurmountable.

The exact detailed layout of the access road and site has still to be determined.

Comment noted

West Lothian Council would be obliged to minimise any potential tree loss and replace any trees felled.

Comment noted

Email
22/01/2015 22

Response
26/01/2015

Several times it was said that the council only had 3 years and 3 months to have the new school up and running and it was also noted that the first step a site exploration had still to be carried out. With the process being at such an early stage an awful lot of pressure will be put on

Comment noted

West Lothian Council will contribute £10 million to the cost of the new school and

the Council to achieve a completion of March 2018. In that fairly short period time will be needed to carry out site investigations, engineering, architectural and QS input as well as actually building the school.

that Scottish Government will provide £20 million. The council is working with Hubco for delivery of the new school and liaising with Scottish Futures in this project. Through Hubco the council has access to all current professional and technical knowledge, expertise and skills required for such a project. The project manager within the council is also experienced in the management of NPD project work and experience of school capital projects.

I have learned from my 47 years in the building industry including a spell as project manager that the project needs to have a strong project manager who knows the subject and process inside out and who can take firm control.

I can confirm that the Project Manager for the delivery of the new school was not in attendance at the meeting on Monday evening since the subject of the consultation related to the location of the new school. At the meeting officer outlined that the council has taken a decision to provide a new school rather than undertake a refurbishment and extension of the existing building. It is therefore necessary to identify a suitable site that would be capable of accommodating the new school and undertake formal consultation.

I along with several others found those qualities missing at Monday meeting.

The council staff assigned to lead on this project is all experienced in this fields and it is my understanding that they have the confidence of the council in this matter.

Email
22/01/2015 23

Response
27/01/2015

A new school is a desirable.

Comment noted

The concern I have as a resident of West Calder is the proposal access may be from the Harburn Road.

West Lothian Council would prefer to locate the new school building in the fields closer to the railway line with preferred access form the A71. This would mean that there would be little change

			to traffic volumes at the junction at the library with a possible option being to take access from the proposed new secondary school road to Parkhead Primary School.
		The congestion at start and finish of the school day from Parkhead Primary is already unacceptable, this would be much worse with a nearby secondary school.	Comment noted
		The proposal should include a commitment to cross the railway from the A71 and to include shared access to Parkhead Primary, thereby solving all congestion problems with Harburn Road.	Comment noted
Email			Response
23/01/2015	24		27/01/2015
		Would like to note my concern regarding the proposed access to the building from Harburn Road.	Comment noted
		This road is unsuitable for the additional traffic that the new high school would cause. It is unsuitable for the volume and nature of some of the traffic that currently uses it.	Comment noted
		It would be my position that to use that road for access to the school would cause a danger to road users and pedestrians there. There is access from the A71 which could be developed utilising the existing bridge, which I understand would have to be upgraded to allow electrification of the railway.	West Lothian Council would prefer to locate the new school building in the fields closer to the railway line with preferred access from the A71. The preferred access from A71 would mean there would be little change to the traffic volumes at the junction at the library with a possible option being to take access from the proposed new secondary school road to Parkhead Primary School. This may alleviate some of the traffic movements at this junction.
		Replacing the existing school with a new one is a great and	Comment noted

bold idea but if you are going to do it don't resort to have measures. Access in proposed area must be from the A71.

Email
23/01/2015 25

I obtained a copy of the paper at East Calder library and the map of Appendix A shows only a small part of the catchment. Could you send me a map of the entire catchment area of West Calder High School?

Response
27/01/2015
Map sent electronically as requested.

Email
24/01/2015 26

At the public meeting held on the 19th Jan, regarding the location of the new high school with the point that pupils would be uplifted in spirit and be willing to put more effort into their studies if their environment was a new rather than refurbished school was made several times.

I spoke to granddaughter who currently at WCHS and asked her what would give her a positive effect, 1 for some subjects a better quality teacher was required and 2 the attendance of some teachers needed to be improved.

I spoke with Neil Findlay MSP afterwards and he said that teaching in a new school was a great boost to ones spirit.

Maybe a new school has a more positive effect on teachers than pupils.

Response
27/01/2015
Comment noted

Comment noted

Comment noted

Comment noted

Email
25/01/2015 27

I am writing in support of the plans to build the new West

Response
27/01/2015
Comment noted

Calder High School as planned near Parkhead Primary School. The current school is not fit for purpose now and a new school on the proposed site would provide appropriate facilities for the current curriculum. It would also ensure the school was accessible for those with disabilities. It would be nearer a village and I would continue to support the schools decision not to let youngsters out at breaks and lunchtime.

I do in the long term support a new school in East Calder as it makes sense to have less youngsters travelling by bus with the new housing being built.

Comment noted

Email
26/01/2015 28

Response
27/01/2015

Resident from Harburn Drive and want to preserve the local environment.

Comment noted

West Lothian Council are just trying to comply with Schools (Consultation) (Scotland) Act 2010. It became clear that the council were under pressure due to time constraints and everything was being rushed. It was also clear that the majority of people had grave concerns over the project.

Comment noted

I and many others felt that the decision would go forward anyway regardless. The council did say that it was not a done deal but their body language said different and the audience saw that.

Comment noted

Investing £12 million into an existing school which is structurally sound is located in an ideal position looks like a sensible investment. The statement that the building is

Comment noted

50 years old is in my opinion a red herring to add weight to an argument. Taking into consideration the limitation of an ethylene pipeline pipeline which runs along inside the North and West boundary is another red herring, there is ample land available to expand on the existing building.

All the infrastructure is already in place with the only inconvenience being building work going on while the school is occupied. This can be minimised by using temporary buildings and making good use of the long summer breaks. Down takings and building happen at an increased rate these days due to the advancement in equipment and building techniques.

Comment noted

Having on the other hand the preferred option with private money being used (£30 million) to fund a new school than being leased to the council over a 30 year period. Private investors will do this at cost as they have a duty to their shareholders and the return in investment has to commensurate with what is expected on the stock market.

Comment noted

Will be the real total cost taking into consideration the destruction of the natural environment, hundreds of trees and the natural habitat for wildlife gone for good at the proposed site located at Parkhead.

Comment noted

We have removing the existing building with the financial cost and environmental impact of disposing of the building. I have to ask the question why

Comment noted

demolish a building which is in good condition and clearly has an asset value.

Congestion would be increased considerably if you access the proposed site via Harburn Road. Increasing heavy vehicles, buses trying to manoeuvre around residents vehicles on a B class road.

Comment noted

Harburn Drive has limited residential parking. It can be difficult to manoeuvre due to parked cars. There is already an issue at times with drivers visiting or dropping off Parkhead Primary School, what would happen with the addition of the new West Calder high School.

Comment noted

Increased risk of pedestrians being injured or killed due to road layout, current parking on B7008 and congestion.

Comment noted

Increase in the environmental and health impact from vehicles, in particular buses. As a side note West Lothian Council contract companies that use old buses which are not environmentally friendly by any means. These buses in most cases are over 20 years old and emissions are below which should be expected today. Due to proximity residents and pedestrians would be subjected to a decrease in air quality which can affect their health. The UK are already in trouble with the EU on its attitude to pollution in built up areas.

Comment noted

Destruction of mature trees along the proposed route which contain many native species.

Comment noted

Destruction of wildlife habitat

Comment noted

in particular cover for deer and hunting ground for a pair of buzzards, foxes and many other species.

As a matter of respect I do not think it's appropriate to put the road alongside the new cemetery.

Comment noted

Should the project go ahead direct access via the A71 would be the safest and the most environmentally responsible option.

Comment noted

Have a change in demographics here, children at the east end of Polbeth and the West end of West Calder will have 1 mile to walk to school. To be realistic they are not going to walk they will use public transport or they will get a lift to school. Increasing traffic congestion.

Comment noted

I see less than 5 children per day walking from the east end of West Calder to the current West Calder High School. Please carry out a survey on the number of cars which drop children at the school just now.

Comment noted

The A71 is one of the main arteries running through West Lothian with most traffic passing through West Calder heading South and West then vice versa.

Comment noted

West Calder is very busy in the morning and evening and is fairly congested. Traffic heading East in the morning is generally very slow/stopped between Burngrange and the lights at the junction of the A71 and the B7008. A similar situation applies in the evening with traffic regularly backed up from the filling

Comment noted

station in Polbeth and lights at the junction of the A71 and the B7008. If the new school is located at the proposed site congestion will be worse in West Calder.

There are many benefits to a new school in West Calder but as with many projects of this size there are always many issues with winners and losers. The proposal is very positive in what the project will bring for the people of West Calder but what needs to be assessed is what limitations, inconvenience and loss of leisure areas will be placed on residents.

Comment noted

The effect on the small businesses which rely on the customs from those involved with the school.

Comment noted

In my opinion I would look at retaining the existing school and upgrading as necessary. There are many schools in the UK that are over 50 years old and some of the private schools are hundreds of year old. Schools just need investment and to be maintained properly.

Comment noted

A new school will not make children any more intelligent or dramatically improve their ability.

Comment noted

The school age and the ethylene pipeline are just adds weight to an argument.

Comment noted

I drive past West Calder High School every day and I see the volume of traffic attributed to the school, I believe this will compound traffic problems in West Calder.

Comment noted

You have to take into consideration the

Comment noted

environmental impact as West Lothian Council are proposing to destroy the natural environment to build a new school. There is also the impact on the existing infrastructure, which will affect us all living in the area.

I suggest a project of this size which will have a major impact on the environment and people of West Calder is subjected to an Environment Impact Assessment as per the Town and Country Planning (Environmental Impact Assessment)(Scotland) Regulations 2011. Comment noted

I cannot support the relocation of West Calder High School in its current form due to the financial and the environmental costs. Comment noted

Email
28/01/1025 29

Response
17/02/2015

Can you advise me as to what are the other restraints that prevent the High School from being built where the existing one is located, e.g. erect temporary mobile buildings, demolish the existing school and re-build new one of same footprint as existing.

The presence of the ethylene pipeline and the associated statutory hazard zones which prohibits the development of the majority of the existing sites for educational purposes. This aspect on its own would have required the acquisition of land now owned by the Council.

It was mentioned that the costs of providing mobile accommodation would be very expensive. The best for the area, replanting the trees destroyed in building the new access road.

In relation to the temporary buildings it would not be financially prudent to utilise these and there would be considerable issues in delivering the curriculum in relation to PE, Science, CDT and Home Economics from such buildings.

Has a cost comparison exercise been carried out to compare this with the additional costs that would be incurred if the High School

The cost associated with the construction of a new school is based on a Scottish Government approved matrix which reflects many of the

was built next to Parkhead Primary School as currently proposed, i.e. c site investigations, new gas and electricity supplies, new rainwater disposal system, new sewage system, new road from A71, new bridge over the railway, new traffic control at the A71 whether it be a roundabout or traffic lights, cost of carrying out investigations as to which of the last would be best for the area, replanting the trees destroyed in building the new access road.

works highlighted in your email. It is considered that the whole life costs associated with a new modern secondary school will be significantly better than a refurbishment and extension of the existing school even if this was possible in terms of no site constraints. The potential to obtain funding of up to two thirds of the costs from a Scottish Government to provide the community of West Calder with a new secondary school and accessible sports facilities is an opportunity that cannot be overlooked when considering the replacements of the existing dated property.

Email
04/02/2015 30

Response
04/02/2015
Comments noted

West Calder is already a bottleneck for traffic so it would seem sensible that access to the new school site should be directly from the A71, between Polbeth and West Calder. Directing traffic up Harburn Road from West Calder library to access the site from the South West would be ill-advised and raise health and safety issues. It would also make the journey time longer for most pupils and lead to delays.

If the main access was from the South West, vehicles would seek alternative routes to avoid West Calder bottleneck which would take them onto the B7008. This road is unsuitable for double decker buses and heavy volumes of traffic, in my opinion with overhanging branches and blind bend which are prone to black ice in winter.

Comments noted

There are numerous accidents on this road each

		Winter	
		Concerns over the plans for the existing site of West Calder	Comment noted
Letter Received 04/02/2015	31		Response
		Attended public meeting in West Calder High School on the evening on 19th.	10/02/2015 Comment noted
		Live close to Parkhead Primary School and suffer daily the road congestion this bring not only through the A71 but trying to get out of Harburn Drive at 8.30am every morning and returning at 3.20pm. Parents of pupils see and accept the problems parking as close as possible to the school so they park in Harburn Drive which is the nearest street to the school.	West Lothian Council appreciates your concern regarding the congestion in and around the Harburn Road area. It is our preference to locate the new West Calder High School access road from the A71 with the possibility of taking access from the new proposed secondary school directly to Parkhead Primary School. Which may help alleviate some of the traffic movements at this already congested junction?
		Pupils are now driven to school which creates a lot of congestion from us residents. By building a second school in the exact same area would be devastating to the residents of Harburn Drive.	Comment noted
		Concerned about the actual land that would be used. People bring their dogs by car to walk them in this area. Its well-used and would be sorely missed if not available not to mention the state of the streets with dog poo. Lots of established trees, bushes and forestry which bring lots of wildlife, it would be criminal to destroy this.	Officers do not know the exact detailed layout of the access road and school site. As they have yet to be determined however West Lothian Council would be obliged to minimise any potential tree loss and replace any trees felled during construction process.
		A new school would be beneficial to the community but it also brings insurmountable problems which would really need to be addressed before we could	Comment noted

take this proposal forward.

Email
08/02/2015 32

Response
09/02/2015

Understand the need to move the school and can see the attraction for putting the high school next to the primary school. My issue is the access.

Comment noted.

Presently all traffic for Parkhead Primary School comes along Harburn Road and this causes traffic chaos in mornings and afternoons.

Comment noted.

I note that the preference for the council is to access both schools in future along Harburn Road using a new road to be built by the football ground. This gives me concern as Harburn Road is not suitable for the amount of traffic which will need to access both schools, especially the school buses.

Comment noted.

In addition the new road required will cut across a heavily utilised area of countryside. Many families in both Polbeth and West Calder use this area for recreation and dog walking. It has been gradually reduced in size over the past years since we have lived in West Calder and to have it reduced would be destructive to a well used resource.

Comment noted.

The option for access from the A71 across the railway bridge needs to be upgraded anyway when the line is electrified, seems like a better option. It may be more complex and expensive than the alternative but I am sure it will be safer.

Comment noted.

Email
10/02/2015 33

Response
17/02/2015

	Owner of one of the houses on Harburn Drive.	Comment noted
	Large area of the current park land to the East of Harburn Drive shall be consumed by the new school. When we purchased this land we were advised this land could not be built on which was a great attraction which now seems to have changed. This will affect our property value.	Comment noted
	The new school will be beneficial for my children the loss of access to this park area, bike track and kick pitch is not. What are the plans to offset these items and loss of Greenland?	The exact detailed layout of the access road has still to be determined and West Lothian Council would be obliged to minimise any potential loss to green areas and seek to replace any children playing areas or trees felled.
Email 11/02/2015 34		Response 16/02/2015
	Forestry Commission Scotland can advise on all aspects of Woodlands and forestry associated with developments and pre-application discussion with them to clarify proposals and any particular restrictions or conditions on woodland removal that may apply to the area is recommended. The developer should consult the local Forestry Commission Conservancy office.	Comment noted
	The applicant should be aware of the Scottish Government determination to decrease the loss of existing woodland and aspiration for further expansion, reiterated in the Scottish Planning Policy.	Comment noted
	There will be a presumption against development affecting woodlands and trees unless there is a proven locational need and where a sustainable environment gain through replacement and additional tree planting	Comment noted

appropriate to the area is provided. Policy ENV12 and 13 also place an importance on protecting existing woodlands from future development. Beyond this applicants should refer to guidance documents by Forestry Commission in relation to good forestry practice and associated environmental issues.

Applicants need to consider the consequences of woodland removal on carbon sequestration and appropriate mitigation measures.

An ES should describe the proposed mitigation in terms of its social, economic and environmental value, so that an assessment can be made as to whether the proposed mitigation is appropriate and compensates for the negative impacts of woodland removal.

The applicant should carry out an assessment of the implications proposals on water, soil and air resources and an appreciation of the potential consequences of the loss of woodland cover with regards climate change, specifically carbon sequestration. Adherence to the UKFS Forests and Water Guidelines and adherence to pollution regulations is required to safeguard water quality.

Comment noted

The Scottish Government expects all forestry plans and operations in Scotland to comply with the standards. Forestry Commission Scotland therefore expects for EE's for projects that impact on woodlands to clearly state that the project will be developed and implemented in accordance

Comment noted

with the UKFS and associated guidelines.

The ED should clearly indicate proposed areas of woodland for felling to accommodate new infrastructure such as roads. Details of the area to be cleared around those structures should also be provided along with evidence to support the proposed scale and phasing of felling. The ES should consider design approaches which reduce the scale of felling required to facilitate the development.

Comment noted

When there is a change in land use the woodland should be described in sufficient detail to enable its intrinsic public benefit value to be assessed. This will facilitate decisions on whether woodland removal is acceptable and if so whether compulsory planting will be required.

Comment noted

An ES should also detail any trees or woodland areas likely to be indirectly affected by the proposed development, providing full details of alternatives and or protection and mitigation measures in the ES.

Comment noted

The proposed paper identifies an area of new woodland planting of approximately 10 hectares which could be affected by development. This was planted using funding from the Scottish Government via Rural Priorities. Removal of this woodland will instigate a reclaim of any monies paid to West Lothian Council. Partial removal may invalidate the scheme which would also result in a reclaim.

Comment noted

Two small areas of woodland within the proposal boundary are listed as being lowland mixed deciduous which is a UKBAP priority habitat and is afforded the strongest protection according to the Scottish Governments Control of Woodland Removal Policy.

Comment noted

A full assessment should be made by the applicant of all the landscape and visual issues. This should include a full description of the general character and a statement of the landscape and visual sensitivities that may be potentially affected by the proposed development. Furthermore an assessment of the cumulative landscape and visual impacts of the proposal should be carried out. Should the EIA include for a Landscape and Visual Impact Assessment (LVIA) to be carried out.

Comment noted

The applicant should consider the wildlife implications of any tree felling in the relevant sections of the ES. The ES should also consider any impacts of forestry activities on the water environment with particular attention paid to acidification and nutrient leaching. The applicant should make full use of the Forests and Water Guidelines in proposing forestry activity and mitigation procedures.

Comment noted

The ES should therefore contain a detailed assessment of the implications of the proposals on biodiversity. This should be in both general terms of effects on the biodiversity strategy aims and the impacts on protected and

Comment noted

priority habitats and species.

The applicant should recognise the wider aspects of the proposal on the historic environment. In terms of forest and woodlands. The value of the historic environment in woodlands is recognised in the UK Forestry Standard and associated Forests and Historic Environment Guidelines.

Comment noted

The UKFS and SFS not only identify the duty to safeguard evidence of the historic environment but also encourage their active management, enhancement and interpretation.

Comment noted

Consideration of the historic environment within ES applications should include a professional archaeological prospective survey.

Comment noted

Email
11/02/2015 35

Response

No reply.

Comment noted

I'm supportive of the high school development at West Calder and it will bring many benefits to the area but I'd like carefully thought through plans in place to manage the safety aspect of increasing pedestrian activity within the village especially with it being so close to the A71.

Email
13/02/2015 36

Response

17/02/2015

Comment noted

We are in favour of the relocation of the West Calder High School as the proposed site is in a more sustainable location allowing potentially improved access to children walking and cycling to school. The reliance on school buses and the car will be reduced. It is essential that walking and cycling access should be

carefully considered to ensure easy and safe access to the school.

There is concern about some of the aspects of the proposal for road access to the school and its junction onto the A71. The crossing of the railway will be a problem that needs to be resolved. No doubt your transportation section will give you more detailed advice on this proposed access.

Comment noted

Email
15/02/2015 37

I'm looking for the outcome of the public meeting at West Calder High School regarding the proposed new school.

Response
16/02/2015

The consultation concludes on Monday 23rd February 2015 where all responses must be submitted to West Lothian Council in order for officers to prepare the outcome report. This report is then presented to Education Executive elected members who then make their decision whether or not to accept the proposal. This report will be made available online in May.

Email
16/01/2015 38

I know people are generally pleased that there is a proposal to return the high school to the town, enabling many of the children to walk to school.

Response
17/02/2015
Comment noted

Loss of green space. The Council relocated West Calder Youth football team to Hermand Park and installed a 10 foot high fence around the new ground, removing it from public use. Two green spaces have been lost in a short space of time. The proposed site for the new school represents the last substantial green space for the entire east of the town

The overall layout of the site has still be decided and the major footpaths will be safeguarded where possible. The exact location of the building and access roads haven't been decided and therefore we cannot determine how much of the new trees planted will be affected. However not withstanding this the Council would replace existing

and losing this would have a significant, negative impact on the residents who use this space for a wide range of healthy, recreational purposes. Where will my children play on their bikes?

planted trees as part of the overall development of the larger site area. The detailed design process would need to be mindful of protecting as much as possible of the improvements to the environment in this area as possible and further community consultation would be an essential part of making the overall proposal a success. The exact detailed layout of the access road has still to be determined and West Lothian Council would be obliged to minimise tree loss and replace and felled and reposition any football or children's playing areas.

The current access to the site via the A71 is the only logical way to access the site. The suggestion that access could be achieved off the Harburn Road is poorly conceived as the road is far too narrow and far too congested to be usable. The traffic light controlled junction by Wood's Garage on the A71 is already full to capacity at the start and the end of the day for the primary school; it could not cope with the associated traffic of 1100 high school children.

West Lothian Council preferred access would be from the A71 this would mean there would be little change to the traffic volumes, an option to take access from the proposed new secondary road to Parkhead Primary School.

The current proposal is not to build a community high school and it should be, this raises concerns about how accessible the school and its facilities will be to the public. Deans Community High School is an excellent example of how things can and should work.

The new West Calder High will operate similar to that of Armadale Academy which runs an extremely successful Sports hub.

Why has this site been chosen with no other options being put on the table? The council has successfully completed several land swaps with developers in the

The field to the East of the current West Calder High School is not in Council ownership it has been allocated for housing use since West Lothian Local

		past in order to secure suitable building land for a project such as this, why has this not be explored for this project?	Plan was approved. The cost of acquiring the site would be high and would reduce the funding available to pay for the school itself.
Email			Response
16/02/2015	39	Was at the public meeting at the high school and heard the remarks made by Ms Niven, which indicate to me that whatever you tell me now the decision has already been made to build on the proposed site next to the primary school. The Council has made its mind up and has completely lost the trust of the local community. It's a shame that a publicly elected body should have such a dreadful reputation, I regret it reflects the corrupt world in which we have to live these days.	19/02/2015 Comment noted
		Was there ever a cost analysis to compare the acquisition of the land to the east of the school and the building of access to the proposed site which would entail enormous disruption and the construction of a substantial bridge over the railway line?	No detailed evaluation was undertaken in terms of land values for land to east of the existing school. This land we currently understand is proposed for residential use and is not available for Education purposes.
Email			Response
17/02/2015	40	Thanks for taking time to get back to me, I do appreciate it. I recognise that this is a challenging project and there will be many views about the best way to achieve a new school. I still believe that the other land swap option could have been explored around the village.	Comment recorded Comment noted
Email			Response
19/02/2015	41	We are delighted that the	23/02/2015 Comment noted

opportunity has arisen to consider proposals to develop a new facility for pupils of the Calder's.

The ethylene pipeline is obviously a significant constraint. Has the Council had confirmation from the pipeline owner as to the projected lifetime of the pipeline? Is there a de-commissioning date?

The Council has not obtained any projected lifetime for the pipeline although it is expected to remain in operation for the foreseeable future.

There is a large undeveloped site immediately East of the existing school complex. Was consideration given to building there and keeping the same access arrangements, please state why this appears to have been discounted? If not in public ownership please clarify the proportion of cost allocated to land purchase.

The land to the East of the existing school is not in the ownership of West Lothian Council and is proposed to be developed privately for residential use. The site is not available for educational development. No values have been included for land purchases in the overall project costs. This is why the site search focused on land in public ownership. The timescale for delivery would not allow sufficient time for negotiations to purchase a site in private ownership.

The opportunity to progress direct vehicular access from the North (A71) needs to be given much more vigorous attention for the following reasons; WCHS currently benefits from having a well-designed road junction located away from other housing or industry. A new North access on the A71 could replicate this and perhaps be integrated with future access needs to land north of the A71.

The existing site access to West Calder High School whilst compliant in terms of road safety standards is not considered ideal and would require significant upgrading. The Council is currently liaising with Network Rail to mitigate the impact of construction traffic in and around West Calder for both the electrification and proposed new school works.

A South access would lead to increased congestion through West Calder, particularly at the A71 Harburn Road junction, has this been analysed? Also the school buses from East and Mid Calder would have to negotiate the sharp left hand

As part of the development of proposals a full traffic impact assessment will be undertaken as part of the planning application. It is however at this stage not proposed to access the new school site from Harburn Road.

bend and falling gradient, has the existing road-geometry been proved able by survey and calculation to cope with the maximum length of bus in relation to the existing stop lines and eastbound filter refuge?

Has an actual trial of the longest bus been carried out? Has analysis of the carbon impact of changed bus mileage in relation to the options for access been done?

Clause 5.9 the statement 'insignificant' is inappropriate. A considerable number of the pupils from East Calder and Mid Calder are bussed daily to West Calder High School. The travelling time is roughly 15 mins each way which is a total of 30 mins per day.

A new North access would increase this journey by 0.9 miles each way to give a round trip of 11.9 miles and a total time of 36 mins. A South access would however increase this journey by 2 miles each way to give a round trip of 14.1 miles and a total time of 46 mins. Traffic congestion occurs through West Calder between 8 and 9am and back-up of Westbound traffic from the traffic lights at Harburn Road is normal. Re-phasing of traffic lights delays will be inevitable. In a school year pupils from East Calder would have to travel an extra 355 miles and spend an extra 19.7 hours on busses if using a North access. For a South access

No detailed analysis of the overall projects carbon impact has been undertaken however given the improved efficiency of a new building and the long term position of reduced transportation of pupils from East Calder as a consequence of the new school, there will be considerable reduction in carbon impact from a new West Calder High School.

As outlined in an earlier response a full traffic impact assessment will be undertaken as part of any planning application and it is not intended for access to the proposed new school to be from the Harburn Road.

Comment noted

this would reach an additional 788 miles and 52 hours on the present journey to West Calder High School. The latter is a very significant increase on pupil's time away from home. If the school hours stay as present then an earlier pick-up time will be required.

No mention is made of abandoned mine workings on the selected site. Has appropriate site investigations been carried out to enable realistic cost/time estimate of any remediation which may be necessary?

The site has been subject of an initial site appraisal and is currently subject to full comprehensive site investigations. The Council is aware of the potential for the site to be subject to undermining which is not uncommon in West Lothian. The Council has significant experience of dealing with sites where there are difficult grounds.

No mention is made of proposals to deal with the existing site once redundant. Does the Funding Package include demolition and restoration costs plus income from sale of land for future development, please clarify?

The existing West Calder High School building will be demolished once it is no longer required for the delivery of services. All property no longer required for the delivery of services is subject to an options appraisal.

Email 42
19/02/2015

I welcome the proposal to improve the education offered to young people in this area.

Response
20/02/2015
Comment noted

Being sited adjacent to Parkhead Primary School and Parkhead Nursery is welcome and closer links between all education facilities will benefit all young people.

Comment noted

The community will benefit from the community use of certain parts of the school building e.g. the swimming pool. An expanded further education service would also be welcome.

Comment noted

The building being designed with the physical needs of all children in the area is to be welcomed.

Comment noted

As a resident who has lived on Harburn Road for 27 years, I am greatly concerned that Harburn Road is to be expected to cope with even more traffic.

I live at no 31, which is opposite the bowling club and at the junction of Harburn Drive and close to the junction of The Glebe.

I am gravely concerned that this road is to be expected to cope with the traffic already using it and to be compounded by all traffic needed to service a large secondary school.

West Lothian Council are aware of the current congestion pressures on Harburn Road and would favour options that do not add to these problems. Therefore the preferred access from the A71 would mean that there would be no change to the traffic volumes and there may be an option to take access from the proposed new secondary school road directly to Parkhead Primary School.
Comment noted

There are times when I cannot leave my driveway; this is when the primary school is finishing as parents/carers park on Harburn Road outside our house.

The traffic backs up from the traffic lights at the foot of the hill at the library and everything grinds to a halt.

Comment noted

Some residents on this road do not have off road parking, so need to park on the road outside their homes. This already leads to traffic negotiating round parked cars at the moment.

Comment noted

Traffic on Harburn Road is already busy with buses and parents delivering pupils to the primary school along the

Comment noted

narrow road to the school in the morning and when school closes at 3.15. This is already recognised as a way to school needing care.

There were roadwork's locally which diverted traffic from the A70 down into West Calder via Harburn Road. Since then we have significantly more heavy traffic using Harburn Road to access Livingston, A71 and M8. This traffic includes many large articulated lorries which have frequently not gauged their speed properly when approaching the bends in the road at the junctions. In the past there has been at least one accident when an articulated lorry crashed in the wall near the road that leads to the primary schools.

Comment noted

The proposed new school will have the many buses and taxis needed dropping off pupils from outlying areas, or who have a particular need. At the end of the school day this will be required again.

Comment noted

Staff and visitors will need access to the new school on a daily basis.

Comment noted

There will also be the normal deliveries that a working school requires.

Comment noted

It is welcomed that young people will be encouraged to walk to school; however there will be parent/carers using Harburn Road to drop off or collect them, especially if there inclement weather.

Comment noted

I am hoping that a safer entrance to the new school off the A71 will not be the preferred method of accessing this site.

Comment noted

Email
20/02/2015 43

I attended the meeting which was very informative. I am in favour of the new build as long as the access from the A71 can be agreed. The discussion also went on to confirm the two school plan with the building in the future of the high school in East Calder. This was to be based on the completion of 2500 homes at East Calder. I don't know if you are aware Persimmon Homes one of the existing builders in Calderwood have a consultation in East Calder Community Centre on Wednesday 25th February 2015. I have spoken to Persimmon who has indicated the possibility of building another 200 houses to the rear of St Theresa's and St Pauls Primary School. Will this be taken into the equation for the number of homes to be completed and the funding for the high school in the East?

Response
23/02/2015

West Lothian Council are still having ongoing discussions with Persimmon and all developers will be expected to meet appropriate planning obligations as required for their planning permission.

Email
19/02/2015 44

Objecting in principle to the building of the new West Calder High School because you are taking away a good football pitch and basketball court the pitch is used by West Calder United Football Club for training their youth teams.

Response
23/02/2015
Comment noted

Email
21/02/2015 45

Emailing to register my support for a new build for West Calder High School. Was at meeting held at East Calder and all I heard was very positive?
Great opportunity for the children to get a brand new

Response
23/02/2015
Comment noted

Comment noted

		<p>school with brand new facilities and also it sounds like a great opportunity to enhance the facilities for the local community.</p> <p>I am treasurer of East Calder Primary School and have forwarded this link to members asking them to also share their support for this.</p> <p>Have son who is in S3 at current West Calder High and therefore he will be S6 before this school is ready but I have a daughter who is currently in primary 6 before this school is ready but I have a daughter who is in primary 6 and will be S3 at the time the new school is ready and she is very excited about it.</p>	<p>Comment noted</p> <p>Comment noted</p>
<p>Email 22/02/2015</p>	<p>46</p>	<p>Read through the consultation and believe that this is a good step in a good direction.</p> <p>West Calder High School needs to be a new school and not a refurbishment as this would not be conducive to current learning in the school.</p> <p>My family live in Mid Calder, one question is transport even though it mentions little difference from existing arrangements? What will happen to the old location of the school?</p>	<p>Response 23/02/2015</p> <p>Comment noted</p> <p>Comment noted</p> <p>School transport to the new school would remain the same as it currently is to the existing West Calder High School. It is unknown.</p>
<p>Email 22/02/2015</p>	<p>47</p>	<p>As a parent of a current S1 Student at West Calder High School I attended the public consultation meeting regarding the new school in East Calder at St Paul's Primary School.</p> <p>Disappointed that a secondary school will not be built in the village during my</p>	<p>Response 23/02/2015</p> <p>Comment noted</p> <p>Comment noted</p>

daughter's school years I was happy to hear that this was still part of WLC plan for the future of education in the area.

The presentation for the new WCHS was informative and I believe that this proposed new build will be of a much better benefit to all pupils and to the wider community than any further work at the current site. I believe the pupils at WCHS deserve better surroundings for their learning with rooms more in line with Curriculum for Excellence and with better access for special needs students. I do not feel this could be achieved best at the current site.

Comment noted

Email
22/02/2015 48

Response
24/02/2015

Concerned resident of Harburn Drive regarding the proposed new site for West Calder High School.

Comment noted

I would firstly like to ask which other sites have been looked at or shortlisted for the proposed new school and what surveys have been carried out at said sites. Also your findings on why they are or are not suitable. There is no direct access to this site, so why has this site been considered?

The Council looked at a number of other sites which were both in our ownership or could be brought forward through planning agreements. None of these met the criteria of being in West Calder/Polbeth, suitable for development in terms of ground conditions, likely to be secured in terms of ownership within the timescales required to complete construction within the funding parameters set out by the Scottish Government. The site proposed to be permanently accessed directly from the A71.

I would also like to put forward a few points regarding the proposed site next to Parkhead Primary

The development proposals for the new school will include the re-provision or replacement of the play area,

School. Firstly what is to be done regarding the play area, basketball court and football field upon which the children of the area use daily. This would be lost with the building of the school. This area is used daily by children, dog walkers, football players and general people out for a walk. I believe the basketball court and football pitch has recently has substantial upgrading.

basketball court and football pitch together with additional facilities that can be utilised by the community (i.e. swimming pool, dance studio and large sports hall etc.

The building of the school in this area will cause excessive noise and litter for the nearby residents, what has been put in place to prevent this? There is a lot of noise/litter from the primary school at present this would escalate with an additional 1100 pupils.

As part of any design development, planning application and the general management of the school the level of noise and litter will be considered.

At the moment with just the primary school there is an excessive amount of school traffic which comes down Harburn Drive every morning, parents dropping of their children. I have personally been verbally abused by parents dropping their children off. I have been blocked in, almost crashed into on several occasions and have almost run a child down who ran out from a badly parked car. They drive too fast for the area having no respect for other road users. Blocking access, make hand gestures and take umbrage when you dare take right of way to name but a few. A new school with 1100 extra pupils will further compound this problem. Please can you inform me what measures will be put in place to stop this situation? Will Harburn Drive be a residents only area with no school traffic allowed?

There are currently no proposals to create a permanent access to the new secondary school from Harburn Road.

<p>Email 23/02/2015 49</p>	<p>Building a school upon this site would have a detrimental effect upon Harburn Drive and surrounding areas. I believe it would have an adverse effect on the surrounding environment, wild life, residents and their families.</p>	<p>Whilst we accept that there will be changes in the physical dynamics of the area, the proposed community high school will greatly increase the amenity of the area through the provision of community accessible sports facilities.</p>
	<p>As a parent of two children at East Calder Primary, I feel this is a great opportunity for the children to get a new school with new and improved facilities. The location of the new school seems ideal as it's not really too much further for children to go, even from East Calder.</p>	<p>Response 23/02/2015 Comment noted</p>
<p>Email 11/02/2015 50</p>	<p>The Walker Group Ltd has an interest in the implementation of the adopted West Lothian Local plan (WLLP), in particular with regards development within the Livingston and Almond Valley CDA. Our interests include the current development at Raw Holdings, East Calder, consent for housing at Mossend, West Calder and the allocation of the balance of Mossend, Cleugh Brae and Gavieside for mix use/residential development within the adopted Local Plan. All of these interests are impacted upon by decisions taken with respect to West Calder High School which currently serves all of these locations.</p>	<p>Response 24/02/2015 Comment noted</p>
	<p>The consultation papers do not however provide a cost to West Lothian for the replacement of the school, i.e. a school with no additional capacity beyond</p>	<p>Comment noted</p>

that of the existing West Calder High School.

Discussions with Craig McCorriston indicated that the cost to West Lothian Council of funding the replacement school would be circa £10 million with the balance coming from Scottish Govt. This figure is likely to be a minimum the one third of the total costs since WLC themselves have cost new secondary schools before and given figures of circa £30 million at 2012 prices. The council would require to fund circa £1 million in commissioning costs for a new high school.

Comment noted

The consultation contains no costing evidence it is not possible to consider whether the proposal represents value for money.

Comment noted

Clarification and publication of the full costs should be part of the consultation exercise before any judgement can be made with regards value for money. In the absence of this information the consultation is flawed and requires to be carried out again.

Comment noted

Whilst it could not be disputed that providing a new replacement school building for West Calder High School, rather than extension and refurbishment of the current school building, would provide the opportunity to make available to pupils the most modern standard of school facilities and resources, the issue of whether this is justified given the additional £6 million cost is not addressed within the consultation document. Furthermore, the ability of

Comment noted

existing West Calder High School, regardless of improvements proposed to form part of the secondary school infrastructure necessary to support the CDA strategy has never been questioned at any time since the adoption of the Local Plan 2009.

There is no evidence within the Consultation document that the existing West Calder High School is no longer fit for purpose and which would justify the additional £6 million cost to the Council to replace rather than improve.

Comment noted

The consultation exercise does not give any indication as to what use the existing West Calder High School site might be put. It fails to consider whether the existing high school could be retained in full or in part to provide additional education capacity for the District. In the event the existing high school is closed is the site capable of redevelopment thereby generating revenue for the council? It is unlikely that the site could be utilised for residential development since it would be constrained due to lack of non-denominational secondary capacity. The paper contains no details on the alternative sites which were examined or the assessment criteria against which they were tested. The Council should provide details of all the options considered in their search for a site for a new high school. The Walker Group understands that it is incorrect to state that a search of the entire existing catchment area was undertaken because it is evident that the safeguarded

Comment noted

site at East Calder which is located within the existing catchment area was not considered. It is not clear from the consultation exercise that the site search was either thorough or rigorous enough to settle on only one site for the purpose of this consultation. The site which the Council identified at Parkhead has not been demonstrated to be deliverable at this time. West Lothian officials have confirmed that at the time of the consultation ground conditions were unknown and had not been taken into account. The consultation paper suggests that access will be taken via Harburn Road. This would involve negotiating the existing A71/Harburn Road Junction.

The consultation does not confirm that the Council have undertaken any assessment of the capacity of this junction or it's ability to accommodate school buses which are characteristics of the operation of the existing West Calder High School, given its extensive catchment area. We understand that the junction currently operates at or close to capacity.

Comment noted

West Calder High School currently serves the catchment for the Livingston and Almond Valley CDA. However the delivery of the CDA is currently constrained because the existing non-denominational secondary school capacity can only serve some 800 out of 5000 houses allocated in the adopted West Lothian Local Plan 2009. What is required to release the balance of the CDA allocation of over 4000 houses is the development of

Comment noted

a second non-denominational high school within the catchment area.

The local Plan has identified a site for the proposed new high school in East Calder and the Council are currently securing contributions from new housing currently consented within the catchment area. However there remains a shortfall between the level of contributions either secured or committed and the cost of a first phase of the proposed new high school.

Comment noted

The proposal for the extension over and above the proposed replacement West Calder High School should not be considered without the Council undertaking a full review of the non-denominational secondary school requirements for the Livingston and Almond Valley CDA.

Comment noted

The WLLP2009 was approved and was predicated upon one new non-denominational secondary school to serve the allocation of 5000 houses and current contributions levels were established on this basis. Since approval of the Local Plan, some 800 houses have been consented and accommodated within the existing capacity of West Calder High School. It follows that a new East Calder High School would therefore only require accommodating some 4200 houses thereby reducing the overall cost.

Comment noted

The Walker Group has already paid a contribution towards a new 1210 capacity non-denominational high

Comment noted

school at East Calder following the commencement of our development at Raw Holdings and is committed to making further payments on commencement of development at Mossend. These funds can only be used for that purpose. The legal agreement does not permit the use of this contribution for another purpose.

The Walker Group are of the view that using the additional £6 million to fund the initial cost of the new East Calder High School would be a better use of the Council's resources representing better value for money. Firstly the money would support the release of allocated site constrained by the lack of non-denominational secondary capacity and secondly and more importantly the Council would be able to recover the £6 million through developer contributions from the release sites.

Comment noted

We object to the replacement West Calder High School without a fully cost review of the non-denominational secondary school requirements for the Livingston and Almond Valley CDA which sets out the delivery mechanism to support the infrastructure necessary to support the Councils adopted Local Plan.

Comment noted

The Walker Group do not consider that the consultation exercise, site search, assessment of the current school estate or financial case has been undertaken in a thorough and transparent manner. In the absence of detailed information relating

Comment noted

to alternative sites, the condition of the existing school and the cost comparisons of the various options, the consultation is inadequate.

For these and other reasons set out above, we do not consider that a case has been made to support the proposal to replace the existing West Calder High School.

Comment noted

Email
23/02/2015 51

Response

24/02/2015

Sending this email in support of the proposed new high school at West Calder.

Comment noted

Attended the consultation at East Calder and see this as a fantastic opportunity.

Comment noted

At the consultation there were no parents objecting to the proposal, I find it frustrating that objection should be considered from parent who do not take the time to attend consultations and fully understand the situation.

Comment noted

If this proposal is derailed on the grounds of a high school in East Calder that is years away it will be a disaster for not only the children of East Calder but also West Calder.

Comment noted

I hope common sense will prevail and this project gets the green light asap.

Comment noted

Email
23/02/2015 52

Response

24/02/2015

Disappointing that the night was attended by a large number of local residents bringing individualistic, specific and unrelated matters to the meeting.

Comment noted

People often forget or ignore the fact that the council is and has an extensive complement of highly professional officers covering all the various field who will fulfil their individual roles in undertaking the studies and research moving the project from a Greenfield site through to its completion as hopefully a beacon of educational learning.

Comment noted

The Scottish Governments financial support for this project, advantageous to the whole community of West Lothian should be celebrated, an opportunity that does not come along very often, particularly in these times of austerity.

Comment noted

Section 5.6 of the proposal paper January 2015 this together with the panels comments and in particular Moira Niven replies around this topic, show that the dangers from both vehicular and pedestrian travel through the village and along Harburn Road/Lane will be severe. Hugely increased dangers will present by utilising this route. The large proportion of secondary age children 200-300 from the village of West Calder will follow the natural walking route and at the beginning and end of the school day and walk past the entrance to Parkhead Primary School.

Comment noted

I understand the Parent Council of Parkhead Primary have already recorded a number of near miss accidents on this stretch of road servicing. A result of not only the increase in footfall as the school has grown and will continue to grow in future years but

Comment noted

further extremely difficult permitted parking conditions alongside the arrival and departure of the schools own buses.

The road for the last 300m to the primary school's gates in Harburn Road, is not generous in width. The pavement which is single sided for 80% of its length is one of the narrowest in the village. The pavement being full of prams, children on bikes, large puddles, plus small children from two years of age upwards trying to walk along with their parents - to which you are proposing another 200 or 300 pupils walk along at the same time, is likely to result in a serious accident or worse, a fatality of a schoolchild, which can be preventable. Kids will be kids and try to push past slower moving individuals, particularly when buoyant, excited or forgetful.

Comment noted

There are a host of remedies which would help the situation as it is at present and if adopted early enough you would be able to monitor these during the coming 15/16 academic year through to completion of the new school.

Comment noted

Action must be taken to improve the safety of both the current cohorts of primary age children using this route to school; and even more so when the cohorts will be larger and secondary age children will use this route to access the high school post 2018.

Comment noted

Restricted parking in the road between the hours of 8.30 am and 9.15am and again 2.45 and 3.30 to the general

Comment noted

public a measure already adopted by other local authorities in Scotland.

A second footpath on the other side of the road alongside the bowling club in line with the norm throughout Britain especially so in the situation so affected by the school day.

Comment noted

Possible widening of the existing footpath to a width conforming to the rate of footfall at these peak times.

Comment noted

Additional keep clear signage and no parking areas around the school area.

Comment noted

Improved traffic control measure; extra crossing points and keep clear signage on the road when the current lollipop crossing exists.

Comment noted

I am sure that a significantly majority of parents will quietly support the council proposals for a new West Calder High School however the safety of our school children has to be a critical component in the development of the plans.

Comment noted

Summary of Pupil Responses

Appendix 2(b)

Primary School Pupils

P1-P3 Pupil Responses

The pro-forma used is shown at Appendix 3(a). The good points and worries they had regarding the proposal are noted below:

	Good Points	Bad Points
Addiewell	Big brother/sister will be there More space Closer to walk to school New school have same name	May be longer journey for some Trees to be chopped down Damaging nature No place for dogs to walk
East Calder	New playground New swimming pool Fresh dining facilities Quiet areas for library New gym hall New equipment Classrooms bigger New science labs Dance studios Computer rooms West Calder Children closer	Closer to busy road New school further away Railway track too close New teachers New pupils Vandalised being close to houses Digging up nature
Parkhead	Can walk to new school Less people on busses Same place as brother/sister Bigger and better gym Meet new friends New swimming pool No busses New playground	Too noisy Too busy Too big More traffic Live far away won't get to use clubs. May lose play field May lose BMX track May lose footpaths
Mid Calder	Bigger More space to play New things New start More resources Similar location Old school scruffy Sports clubs Football pitch New sports facilities New equipment	Big boys and girls Less parking spaces Close to Parkhead not others What happens to old building?
Woodmuir	Closer for Parkhead pupils More space, bigger rooms	What if Parkhead don't like it being so close to their school.

P4-P7 Pupil Responses

The pupil questionnaire at Appendix 3(b) shows the questions asked. 547 pupils (P4-P7) from the affected 5 primary schools completed a response pro-forma. The responses by school; were;

Primary School	Responses
Addiewell	54
East Calder	137
Mid Calder	155
Parkhead	179
Woodmuir	22

Summary of results

From the pupils that took part in the consultation, 469 (86%) pupils agreed that the new school site is a good position for the new West Calder High School with 76 (14%) saying no, they didn't agree.

Good points for the proposal

- The new school site would be closer for the pupils to get to 95 (17%)
- The new school would have better facilities 117 (21%)
- The new school would have more space 85 (16%)
- The pupils were looking forward to using the new sports facilities 91 (17%)

Worries or concerns about the proposal

- The new school would be too close to Parkhead Primary School 42 (8%)
- The teachers may change 8 (2%)

Secondary School Pupils

The pupil questionnaire at Appendix 3(c) shows the questions asked.

The opinions of the 850 pupils were sought through questionnaires issued to pupil council representatives and then discussed within register groups of around 25 pupils. Responses were collated by class tutors and fed back to Senior Management Team representative. In all, 15 register groups responded representing the views of approximately 380 pupils.

Question: Do you think the new school site is a good position for the new school?

8 classes responded yes, 1 no, and 6 undecided.

Question: What are the good points of the proposal?

The main points raised were as follows:

New school is actually in West Calder and closer for a larger number of pupils from Polbeth and West Calder therefore more pupils can walk to school.

Will be a benefit to Parkhead PS

More choices for lunch break being within the West Calder community.

Question: What are your worries regarding the proposal?

The main points raised were as follows:

Further away for the communities of East and Mid Calder and the catchment area may change in future.

Health and Safety issues regarding the proximity of a railway line and increased traffic in that area with the potential for more road accidents.

Close proximity to the houses in the community.

Appendix 3(a)



Primary P1-P3 Views

Class:
Teacher:

Good Points

Bad Points

Please return to Sharon McCawley, Civic Centre, 2nd Floor, Howden South Road, Livingston,
EH54 6FF



Primary 4-7 Questionnaire

Proposal: To relocate West Calder High School

To build a new West Calder High School on a different site rather than refurbishing the existing high school.

1. What class are you in? P4 P5 P6 P7
(please Circle)

2. Do you think the new school site is a good position for the new West Calder High School? No Yes

3. What are the good points for the proposal?

4. What are your worries regarding the proposal?

Any other comments



Secondary Pupils Questionnaire

Proposal: To relocate West Calder High School

To build a new West Calder High School on a different site rather than refurbishing the existing high school.

1. Which year group do you represent? S1 S2 S3 S4 S5 S6 (please circle)
2. Do you think the new school site is a good position for the new West Calder High School? Yes No
3. What are the good points for the proposal?

What are your worries regarding the proposal?

Any other comments

Appendix 4(a)**Record of public meeting – West Calder High School**

Tuesday 19th January 2015

Council Officers

Moira Niven (MN) – Depute Chief Executive

Craig McCorriston (CM) – Head of Planning & Economic Development

David McKinney – (DM) Planning & Information Manager

Councillors

Cllr – Lawrence Fitzpatrick (Chair)

Cllr – Greg McCarra

Education Executive - Eric Lumsden (appointed member)

Neil Findlay MSP

Approximately 60 members of the public attended the meeting.

Part 1 – Presentation of proposal given by Craig McCorriston (CM) with reference to the consultation document and a PowerPoint presentation, Appendix 4 (c) There were questions during the presentation and these are generally dealt with below. One important clarification was noted - the consultation document does mention at 4.7, "Burngrange Football Ground", this is where the former football ground at Burngrange on the west side of West Calder was relocated to along with a new pavilion.

Part 2 – (CM) then read out pre-submitted questions and responded to all questions handed in prior to the public meeting.

- 1) Based on today's school roll, and pupil home address data, how many children would be considered within walking distance of the proposed new school site? Could this data also be split with those approaching from the east side of the school ie Polbeth area? And those from the West Side i.e. West Calder? How many children in the west side reside on the land adjacent to proposed new school, which includes addresses: Harburn Road, Harburn Lane, and Parkhead Crescent & Gardens?

Detailed question which has been passed to school transport colleagues (subsequently answered in separate email response)

- 2) Based on the current school roll, how many children regularly use the school transport provided as they are not considered within walking distance? How many school transport vehicles does this bring to the school for start of each school day?

Enough to fill current turning circle with some smaller vehicles tucking in out of the way. I've counted 11 buses with some minibuses and taxis. Some 475 pupils currently have transport assistance. There will be other pupils using same buses but who pay a fare. This number would increase as new housing progresses in East Calder. Some pupils are also collected/dropped off by private car.

- 3) What progress has been made with the rail line companies to progress the discussions on bridge replacement and possible upgrade related to this proposal,

due to electrification of the line (the current single lane bridge is within the Community Garden land) and could provide a direct access route to the proposed new school.

Rail relationship – access over rail line. Network Rail and Transport Scotland options for bridge by Polbeth Market Garden. Significant work by Network Rail (electrification) to pedestrian bridge east of the garden. Option to make it vehicular when works require it to be lifted re electrification works. Noted that bridge was formerly vehicular as well but access now limited to pedestrian with bollards closing vehicular movement. Current bridge not to acceptable standard for vehicles.

- 4) Do you plan to conduct a catchment review for West Calder High School in the next 5 years?

There is potential for a school consultation on catchment areas in the next 5 years as during this time frame the scale of development at East Calder is likely to be known. Current consultation is not catchment consultation (no change in catchment status), it is consultation on school relocation, future consultation noted at 5.10 – 2 school strategy. 5,000 new houses proposed for 2nd secondary school at East Calder will require new catchment depending on rate of growth.

- 5) Can we see the projected school roll figures for the period 2014- 2024?

By reference to the presentation, 1,104 pupils by 2023 – including East Calder – not all new housing can be accommodated in current West Calder High School capacity. Need to match roll growth with available capacity - development at Calderwood (East Calder) restricted to 500 until phase 1 of new secondary school is available.

Cllr McCarra – Stirling have indicated that the timescale to provide new secondary school was not feasible until 2028

(CM) responded; necessary to match school capacity with population growth. Stirling have also indicated their willingness to discuss how and when secondary school at East Calder is provided. S75's for Calderwood (and others) regulates development. A 660 capacity secondary school is an obligation prior to occupation of 501st house or cannot continue development (within current available capacity of West Calder High School). 863 current pupils at 2015 census against a 1,100 capacity – there is (and was) some capacity to allow development to commence. Discussion on-going with developers on school provisioning. There is no question that development will be allowed to exceed current West Calder High School capacity without 2nd school at East Calder.

- 6) What are the plans for the land to the north of the Parkhead Primary school, as identified on map appendix C, which stretches from the edge of the playground to the rail line, and are currently used as playing fields at the primary school?

Could be involved in potential access to the high school site? Land for school would need to be re-provided. Land north of Parkhead Primary (playing fields) would be dealt with in detailed plans – could be access to school over A71 – no removal of current facilities and site design would address this. There should be no detriment to current facilities but may re-design (relocate) and may provide additional access to Parkhead Primary.

- 7) Do you propose to reinstate an old footpath alongside Parkhead Primary school, which runs to the west side of the school, and rises up steps to meet the A71 at the side of the A71 rail bridge?

Less attractive option given steps and condition – but all access would be considered. Not looking at this for new school (not a significant potential access route to the proposed secondary school location) but Network Rail doing significant work to bridge abutments with further platform changes (implication of change because of the works to West Calder Station and the rail electrification) – no detriment to access.

- 8) In connection with item 4.7, what are the plans at the council in connection with roads infrastructure, for any proposed building development for residential and business, which may meet Limefield Road adjacent to the DAKS building. And will this become an entry/exit route to possible new housing estates?

No plans unless this is meaning potential access to Cleugh Brae and across to Gavieside Farm. There would be potential for a roundabout on the A71 to serve both the proposed high school site and these local plan housing allocations.

- 9) In relation to section 4.8 - please can you confirm what the improved footpath and cycle routes from Polbeth and West Calder are – what is already planned?

The footpath between Chapelton Drive, Polbeth and Harburn Drive, West Calder runs through the site proposed for the relocation of WCHS. This path is to be upgraded in terms of width, surface and street lighting. The route of this path may be affected by the actual location of WCHS if relocated but it is not proposed to delay this project given the benefits that the new footpath would bring.

- 10) Item 5.6 refers to access arrangements for the proposed new school and that the new 'high school will be accessed separately' – please can you provide further details on this statement?

It is the intention that the access to the site proposed for the relocation of WCHS would not utilise the existing access to Parkhead Primary School. It may be possible to create an additional access to Parkhead Primary School as part of the new road layout that would serve the relocated WCHS. This could offer benefits to transport and access issues on Harburn Road and it's junction with the A71.

- 11) Is there any scope to improve the existing traffic lit junction at library/police station/woods garage in West Calder?
- 12) Would West Lothian consider making the road speed limit 20mph along the A71 and local side roads through West Calder and Polbeth?

11 & 12 - detailed question which has been passed to transport and highways colleagues (subsequently answered in separate email response).

- 13) I only know bits and pieces about the proposed site for the new high school but is it true that the council will destroy part of Parkhead Community Woodland which had over 3000 trees planted last spring, take away the local football pitch and the kids kick pitch?

Detailed design not commenced. As with access, site design would seek to minimise disruption to existing site uses, including the recent tree planting, but there may be need to relocate some existing facilities to make best use of the overall site. This may mean that some woodland areas will need replanted.

Part 3

1. Public - The alternative access would force people via Harburn?

(CM) – depends on new bridge and actual layout plan – no detailed design yet – need to ensure that there would be no detriment to existing access.

- 2 Public - Access A71 – north of railway, would it be possible to facilitate access to school and development land to north of the A71.

(CM) - Could have solution to do both – Gavieside access could be part of new junction.

- 3 Public - 5,000 houses application

(CM) - No 2,000 – 5,000 across West Calder and East Calder.

- 4 Walker Homes new application for 32 houses would total more than 2,000?

(CM) – No. If over 300 would need to stop development or commence new secondary school at East Calder. Walker Homes must fund school at East Calder as over time less pupils to West Calder High School (from East Calder) allows capacity to build out at Mossend/Gavieside.

- 5 Public - 200,000 houses in Edinburgh/green belt. West Calder grew unevenly.

(CM) - Ongoing process for population growth – just now 2,000 houses within this CDA area.

- 6 Duelling of A71 not done. Bypass proposed 20 years ago.

(CM) - Transportation assessment identified 2,000 houses, proposed new roads give bypass west of Polbeth to Livingston longer term.

- 7 Public - planned traffic roundabout would make bigger problem. Parents would park cars on A71 at Polbeth Market Garden. Already traffic congestion at current West Calder High School location - this site would make it worse. Harburn Road junction as well.

(CM) - Planning Application would require traffic assessment and environment screening. (interrupted - 3,000 trees planted – to be dug up?) As part of meeting environmental impact assessment trees would be replanted (interrupted - destroying environment) – the proposal (school relocation) would seek to enhance the overall site. It is a large site of 39 acres so scope to make better use overall (interrupted - glossing over loss of woodland, already being destroyed by JCB's).

- 8 Public - Looking at other site east of school (current West Calder High School).

(CM) – This site is in private ownership with a “minded to grant” planning status for residential development. To acquire site would add several £million to the project cost which detract from spend on the relocated West Calder High School. The proposed site is a large site with the remaining balance of land being improved and the proposal presents a £30m school contract into the community. This represents a significant investment against environment impact particularly when an environmental impact assessment will ensure that as much land as possible is left unused/mitigated/trees replaced.

- 9 Public – Has the cost of a new road to Whauphill House (access road from Harburn Road to the south of the proposed West Calder High School relocation site) been considered against the cost of acquiring the development site adjacent to West Calder High School?

(CM) – at a residential value of £400/500k per acre x 17 acres, the site area for the new school, this would cost some £8/9 million to acquire). This would have a very substantial impact on the financial viability of the new school proposal.

- 10 Public – In terms of construction traffic why not use the development site next to West Calder High School as it has an access road from Bellsquarry through an industrial estate? Have police been asked re lorries from south along Harburn Road?

(CM) - responded – the council is aware of the various site valuations and of building schools on difficult sites – most of West Lothian has ground stability issues. The site next to West Calder High School is also now in the catchment area for James Young High School and there would be a delay if sites were to be changed to another school catchment as a result of school consultation requirements.

- 11 Public – As the same size of school is proposed will it not have the same traffic problems, parents dropping off, congestion, etc?

(CM) – The school site design would address access. There would not be an expectation of pupils being dropped off on the A71 as there would be an access/drop off zone within the proposed school site beyond the rail bridge and thus removed from the A71.

- 12 Public – The access route for construction vehicles needs confirmed as soon as possible.

(CM) – Agreed. The council are discussing options with Network Rail as well as considering site access options from the south of the school relocation site.

- 13 Public – the south access is unsuitable – it is a single track road. There is funeral traffic and there was all sorts of problems last few years: water pipe burst under road due to traffic for tree planting and environmental improvements, the residents had no mains drinking water for 6 months and there were 3 different contractors before the water supply was fixed years, who maintains the road as it is currently in private ownership. There is also gated access – are there other options? The pond in the area is also dangerous.

(CM) – if a southern access was required it would need to be significantly improved – matter of design, but access from the A71 over the railway would be a preferred option.

- 14 Will it really be possible to use an access from the A71 over the railway for construction traffic?

(CM) ideally, yes – a “live” railway line is always hard to do construction over but electrification proposal for the existing line requires a change to the local rail bridges and the duration of the line closure also gives opportunity to do bridge works in advance of school construction.

- 15 Public - Tranent High School had a similar refurbishment cost - here services in situ, would it not be cheaper to use the existing site with existing services?

(MN) A council report on 28/10/2014 identified the potential for a new school following appropriate school consultation. PPP contractors are no longer interested in school refurbishment projects. The current form of PPP supported by the Scottish Government, (Non Profit Distribution - NPD), would mean that the government would fund £20 million of the budget cost whilst West Lothian Council would fund the balance of £10 million. The council moved to favour a replacement school on a new site following a review of options by

senior council officers, given current site consideration, valuation for money and school suitability considerations ie the outcome of the previous refurbishment project would not address most of the inherent difficulties that West Calder High School currently has. The more recent PPP schools have been built on school playing fields with the former building being demolished and cleared for replacement playing fields. This is not an option for the current West Calder High School site.

16 Public – where would the school site actually be?

(CM) – It is anticipated that the school building would be in the north east of the site identified in the proposal paper, nearer the railway and furthest away from planting/houses south of the pathway to Polbeth from West Calder.

The upgrade of this pathway had already been decided and it was proposed not to hold this back due to benefits of new path.

17 Public – the stability of land around Parkhead Primary School is known to have difficulty. Is the proposed school location as pointed out any different?

(CM) the council are anticipating similar ground conditions?

18 Public – At the new Health Centre the council used about 2/3 of the former playing field ground for this purpose. Would this be similar?

(CM) - About 2/3 of the Parkhead site would be needed for the school relocation proposal. The school would be built in accordance with the council's secondary school standard specifications and accommodation standards and would also meet Sport Scotland standards.

(MN) restated that refurbishment is no longer an option given the scale of works. The councils last PPP contract changed from refurbishment to replacement, (Armadale and Deans secondary schools), given the costs and outcomes involved (these schools having somewhat similar circumstances to that of West Calder High School).

19 Public – Who owns that land between the railway and the A71 where the northern access could be?

(CM) – The council own and lease the land.

20 Cllr McCarra – Was the possibility of a land excambion between the owners of the site adjacent to West Calder High School and the council considered?

(CM)- There is a very short and challenging timescale in which to deliver the school relocation project of 3 yrs 3mths (to meet government funding requirements). An excambion was excluded for this reason. Detailed negotiations with the east site developer have already exceeded 18 mths to grant a planning consent. There would be little likelihood of meeting the necessary timescale for project delivery on this basis.

21 Public – If the proposal goes ahead this would be the last lot of green land around Harburn House. West Calder High School was built in the Limefield House deer park. Would the West Calder High School site be retained as open space and has any potential residential development value for the West Calder high School site been factored into the overall project costs?

(CM) The proposal would seek to make better use of the green space around Parkhead. A potential value for the West Calder High School has not taken into account in the project financial model.

22 Public – I've fought to keep an area for children to play on. There would be nothing left for the children if this was removed and this would not be good for them.

(CM) – The proposal for new school is a significant use of land, 17/18 acres site search, but this is the best location for the relocated school. The land take up would be ½ of the site or less. A significant area would be left.

23 The proposal site has won awards for improving the park area, £183,000. What happens to this?

(MN) – the school relocation proposal would seek to enhance facilities, Armadale and Deans Academies are current highly thought of examples of community involvement. The council would encourage maximum use of school facilities and if there is a need to replace existing park facilities this will also be done.

24 Planning consent has not yet been given for the site adjacent (east) of West Calder High School. The developer has not done anything yet. Would it not still be possible to swap the sites?

(CM) – the negotiations with the developer would be lengthy. The existing negotiations would have to be undone and new negotiations started. This would all take a long time.

25 Public – the Polbeth community council had tried to help school upgrade by having discussions with INEOS. It was stated that this was not allowed as the rules require 200 yards offset from the pipeline – no way would they consider building houses on site of national pipeline – the bottom half of the eastern site is similarly affected anyway.

26 Public – Has the proposed site been considered against old mine workings, a horse was lost down a mine shaft, will new school disappear in to a hole?

(CM) – There are contractors on site, doing site investigation over a 6 week period. Soil samples will be tested and the contractors will test boreholes sufficiently deep to identify structural ground problems.

27 Public – I had a plot at Hermand Gardens and I had a call to say “sorry dig deeper for founds due to scale of ground conditions” I had extra to pay - the site drillings I've seen so far are not deep

(CM) – The council rely on contractors who are experts. Scottish Government would not allow West Lothian Council to skimp on investigating ground conditions.

28 Public – The Tranent High School upgrade used mobiles for decant – is this not an option for West Calder High School? Is there not an asset value for West Calder High School? Have engineers not looked at the school? Have options for revising the school not been considered?

(MN) –The use of mobiles for to decant would reduce the budget to spend on the new extension and adaptation so less money overall to work within. A greenfield site would be easier to develop, would provide current structurally sound engineering solutions, best value and a brand new school with facilities to fully support current and future school need – for example the introduction of HNC practical courses at West Calder High School. It would

also result in a more appropriate asset value of school. The refurbishment budget for West Calder High School was £12 million; the refurbishment at Inveralmond Community High School was £20 million. At this cost level the outcome of the building works must be considered against a resultant valuation so as to ensure Best Value.

29 (MN) led discussion on current PPP models and funding arrangements.

30 Public – As a parent I had children swimming at West Calder High School but I moved them to Armadale Academy. That school benefits from excellent school facilities with the community using it a lot.

31 Public – A refurbishment would also have facilities here too (at west Calder High School) within 3 years. Steamrolled into this.

32 Public - The consultation is poor.

33 (MN) the school consultation meets and exceeds statutory requirements. It includes:

Courier advert, council website, council offices, public meetings, trade unions, community councils, MSP's and MP's, all children at West Calder High School and its associated primary schools and it will last minimum 30 school days for all consultees.

34 Public - What about residents?

(CM) - the press advert and council website, etc is meant for a wider group than schools but resident's would be specifically consulted at the planning application stage, assuming the West Calder High School relocation proposal reaches that stage.

35 (EL) - Are there template for new high schools and primary schools

(MN) – The council has approved standard design/specifications/ground conditions – design aspirations.

36 Public – I stay at Harburn Drive – Parkhead Primary School is already a parking issue – the access path to the school is down Harburn drive, how else would they go, there would be parking within housing area – how to stop?

37 Public - there would be 600 children walking, there are already near miss traffic accidents, the natural walking route is past the primary school, past bowling club, school pick up/drop off, impact on pavement, traffic for teachers too is a problem. Could access be improved? Use the opportunity to make it better.

38 (CM) - Recognise point re pedestrian access

39 Public - Primary /nursery access is via Harburn Drive. The car park was re done at cost of homeowners (not parents, school or council).

39 (Cllr Fitzpatrick) -Local knowledge of the environment and area is crucial and it is critical to report back to elected members.

Councillor Fitzpatrick concluded the night thanking all present for the lively debate, their attendance and encouraged those present to respond to the consultation.

Record of public meeting – St Pauls Primary School

Tuesday 20th January 2015

Council Officers

Moira Niven (MN) – Depute Chief Executive
 Craig McCorrison (CM) – Head of Planning & Economic Development
 David McKinney – (DM) Planning & Information Manager
 Sharon McCawley – (SM) Forward Planning Officer

Councillors

Cllr – David Dodds (Chair)
 Cllr – Carl John
 Cllr – Dave King
 Education Executive - Eric Lumsden (appointed member)

Education Scotland

Peter Hamilton HMI- (PH)

Approximately 20 members of the public attended the meeting.

Part 1 – Presentation of proposal given by Craig McCorrison (CM) with reference to the consultation document and a PowerPoint presentation, Appendix 4(c). There were questions during the presentation and these are generally dealt with below.

Part 2 – (CM) then read out pre-submitted questions and responded to all questions handed in prior to the public meeting. (These questions were also dealt with in the meeting at West Calder High School, as set out in Appendix 4(a).

- 1) Based on today's school roll, and pupil home address data, how many children would be considered within walking distance of the proposed new school site? Could this data also be split with those approaching from the east side of the school ie Polbeth area? And those from the West Side i.e. West Calder? How many children in the west side reside on the land adjacent to proposed new school, which includes addresses: Harburn Road, Harburn Lane, and Parkhead Crescent & Gardens?

Detailed question which has been passed to school transport colleagues (subsequently answered in separate email response)

- 2) Based on the current school roll, how many children regularly use the school transport provided as they are not considered within walking distance? How many school transport vehicles does this bring to the school for start of each school day?

Enough to fill current turning circle with some smaller vehicles tucking in out of the way. I've counted 11 buses with some minibuses and taxis. Some 475 pupils currently have transport assistance. There will be other pupils using same buses but who pay a fare. This number would increase as new housing progresses in East Calder. Some pupils are also collected/dropped off by private car.

- 3) What progress has been made with the rail line companies to progress the discussions on bridge replacement and possible upgrade related to this proposal, due to electrification of the line (the current single lane bridge is within the

Community Garden land) and could provide a direct access route to the proposed new school.

Rail relationship – access over rail line. Network Rail and Transport Scotland options for bridge by Polbeth Market Garden. Significant work by Network Rail (electrification) to pedestrian bridge east of Polbeth Market Garden. Option to make it vehicular when works require it to be lifted re electrification works. Noted that bridge was formerly vehicular as well but access now limited to pedestrian with bollards closing vehicular movement. Current bridge not to acceptable standard for vehicles.

- 4) Do you plan to conduct a catchment review for West Calder High School (WCHS) in the next 5 years?

There is potential for a school consultation on catchment areas in the next 5 years as during this time frame the scale of development at East Calder is likely to be known. Current consultation is not catchment consultation (no change in catchment status), it is consultation on school relocation, future consultation noted at 5.10 – 2 school strategy. 5,000 new houses proposed for 2nd secondary school at East Calder will require new catchment depending on rate of growth.

- 5) Can we see the projected school roll figures for the period 2014- 2024?

By reference to the presentation, 1,104 pupils by 2023 – incl East Calder – not all new housing can be accommodated in current (WCHS) capacity. Need to match roll growth with available capacity - development at Calderwood (East Calder) restricted to 500 until phase 1 of new secondary school is available.

- 6) What are the plans for the land to the north of the Parkhead Primary school, as identified on map appendix C, which stretches from the edge of the playground to the rail line, and are currently used as playing fields at the primary school?

Could be involved in potential access to the high school site? Land for school would need to be re-provided. Land north of Parkhead Primary (playing fields) would be dealt with in detailed plans – could be access to school over A71 – no removal of current facilities and site design would address this. There should be no detriment to current facilities but may re-design (relocate) and may provide additional access to Parkhead Primary.

- 7) Do you propose to reinstate an old footpath alongside Parkhead Primary school, which runs to the west side of the school, and rises up steps to meet the A71 at the side of the A71 rail bridge?

Less attractive option given steps (poor condition) – but all access would be considered. Not looking at this for new school (not a significant potential access route to the proposed secondary school location) but Network Rail doing significant work to bridge abutments with further platform changes (implication of change because of the works to West Calder Station and the rail electrification) – no detriment to access.

- 8) In connection with item 4.7, what are the plans at the council in connection with roads infrastructure, for any proposed building development for residential and business, which may meet Limefield Road adjacent to the DAKS building. And will this become an entry/exit route to possible new housing estates?

No plans unless this is meaning potential access to Cleugh Brae and across to Gavieside Farm. There would be potential for a roundabout on the A71 to serve both the proposed high school site and these local plan housing allocations.

- 9) In relation to section 4.8 - please can you confirm what the improved footpath and cycle routes from Polbeth and West Calder are – what is already planned?

The footpath between Chapelton Drive, Polbeth and Harburn Drive, West Calder runs through the site proposed for the relocation of WCHS. This path is to be upgraded in terms of width, surface and street lighting. The route of this path may be affected by the actual location of WCHS if relocated but it is not proposed to delay this project given the benefits that the new footpath would bring.

- 10) Item 5.6 refers to access arrangements for the proposed new school and that the new 'high school will be accessed separately' – please can you provide further details on this statement?

It is the intention that the access to the site proposed for the relocation of WCHS would not utilise the existing access to Parkhead Primary School. It may be possible to create an additional access to Parkhead Primary School as part of the new road layout that would serve the relocated WCHS. This could offer benefits to transport and access issues on Harburn Road and it's junction with the A71.

- 11) Is there any scope to improve the existing traffic lit junction at library/police station/woods garage in West Calder?
- 12) Would West Lothian consider making the road speed limit 20mph along the A71 and local side roads through West Calder and Polbeth?

11 & 12 - detailed question which has been passed to transport and highways colleagues (subsequently answered in separate email response).

- 13) I only know bits and pieces about the proposed site for the new high school but is it true that the council will destroy part of Parkhead Community Woodland which had over 3000 trees planted last spring, take away the local football pitch and the kids kick pitch?

Detailed design not commenced. As with access, site design would seek to minimise disruption to existing site uses, including the recent tree planting, but there may be need to relocate some existing facilities to make best use of the overall site. This may mean that some woodland areas will need replanted.

Part 3

1. Public - Congratulations, great investment for the community being able to use the facilities locally. However what provision is being made for other children out with the catchment area and wider community to be able to use the facilities? No bus service and it is not always possible for parent to drop children off for after school activities.

(MN) responded; this will be an existing issue. There are major works being done to the railway as well as a Park and Ride being implemented. This will open accessing the facilities to the wider community. However it's important to note that the Council are in process of a three year budget with no additional budget available.

2. Public – There are no direct bus services therefore it is parents who would be required to do drops offs and pickups, therefore some children are going to miss out on using these new facilities.

(MN) School strategy in place regarding using the sports facilities and long term improvements. There are no more resources available to assist with improvements to bus provision. It may be that parents can look at fund raising for such provision.

(MN) You just need to look at Armadale Academy; this is a great example of phenomenal use of high school and sports hub. Opening up fantastic opportunities for both the students and the community.

(CM) There will be local investment to West Calder and surrounding areas with Partnership Centre, Park and Ride, better access and improvements to the railway station with Abellio taking over the Scot Rail franchise in April 2015. There may be an opportunity for encouraging lower fares and engaging with young people to use the train more often.

3. (Cllr) The New Pumpherston Primary School was put back two years due to an environmental study therefore if this is the case this time will the old West Calder High School have money spent on it in the meantime?

(MN) Money has already been spent on the existing West Calder High School, improvements for example the dining facility for the meal service, the new all-weather pitch, West Lothian Council will still continue to maintain the existing school until the new one is built and operational.

4. (Cllr) Houses are selling quicker than expected in East Calder, and West Calder High School had capacity for 800 houses. Will school need built sooner?

(MN) We will continue to monitor the rate of house building, occupation and impact on schools.

(DM) West Lothian Council were told by developers that houses wouldn't sell well due to a mix house ratio. Only for a very short time will East Calder be over capacity if houses sell well. We are aware that houses sell quickly, with expectations to have families however officers will monitor the impact on schools closely. Calderwood already has breaks in the forecast and planning permission before new schools are required.

5. (Public) Have you secured entire funding for the new West Calder High School?

(MN) The Scottish Government will contribute 2/3rds with West Lothian Council providing the remaining 1/3rd. West Lothian Council have committed to doing this project and will provide £10 million towards a total £30 million project. The refurbishment project for West Calder High School was for total investment of £12 million.

6. (Public) Will the new high school include a swimming pool?

(MN) Yes, we will take the standard specification for a high school and adjust this to suit the new site. We will design the new school around the emerging requirements and curricular developments and flexibilities. There is great potential for new science provision and that the specification meets SportScotland standards also.

7. (EL) What would the education benefits be, has there been an increase in achievements and attainment levels in new schools in the past?

(MN) Yes, with a new school this raised student's aspirations and provided opportunities to develop their leadership qualities. This is an important factor in part of any student's success. Previously in Armadale and Deans high schools the students were excited about the new school facilities and attainment has risen.

(MN) If we were to refurbish the existing school rather than build the new one this would require considerable compromises to that building.

(DM) An example being Linlithgow Academy which is not unlike the design of West Calder High School. The stair cases at the school were a constant problem costing the council £2 million to resolve.

8. (Public) Will the students have a staggered entry to the new school from the old one?

(MN) Unsure what detailed plans are as yet, we will need to meet timescales and ensure that all resources are in place before moving any of the students into the new school.

9. (Public) there will be some disappointed S6 students if they don't get to move to the new school.

(CM) it's fantastic that pupils are excited about the new school and want to move into it. Even if the students are only in the school for three months. We need your positive feedback on the positives regarding the new West Calder High School.

10. (Public) Has the site been chosen because it's closer to West Calder than East Calder? Students stand outside at least 20 minutes at present waiting on the school bus. It is also unfair that the students from East Calder will be restricted to use the after school facilities due to the distance.

(MN) West Lothian Councils aim is to secure two new high schools one close to West Calder and the other close to East Calder; one being a replacement school which is in West Calder and the other new high school in East Calder being developer funded. There is a funding package being looked at between developers to do a first phase development for a 660 pupil capacity school with the eventual planned size of the school being a 1,210 pupil capacity.

11. There were over 1,000 trees planted on the western boundary, my property backs onto the proposed site. Will these trees be protected?

(CM) The site we are currently looking at is to the north of the railway line and there is some planting in that area. The preferred access causes less disruption to that area, however if any trees are to be removed they will be replanted.

12. (Public) Concerns over loss of green land.

(CM) We recognise your concerns over loss of green space but will endeavour to minimise this and engage with local residents in taking the project forward.

13. (Public) What happens if the funding falls through from the Scottish Government?

(MN) This has already been secured with a commitment from the Scottish Government.

(CM) The new West Calder High School is wholly public funded and the new high school in East Calder would be developer funded. This requires a separate legal agreement. The worst case scenario is that the developer may be unable to pay however there will still be a burden on the land. The first phase (660 pupil capacity) would likely to be around £17-£18 million, not including land costs. The developer must contribute around £6,500 per house towards the cost of the new secondary school in East Calder. The developer is required to forward fund this, making necessary arrangements with banks etc.

14. (Public) What's the update on the West Calder bypass?

(CM) The proposal is to have the road through Gavieside to bypass Polbeth, this is also being developer funded. There is a major engineering task as also this has to link to the A71. The new West Calder High school is not dependent on this but the A71 access option to the proposed school relocation site may assist earlier delivery of the bypass by using the proposed school junction as the start point for the bypass.

15. What will the footprint on the south access be also how will footpaths be affected?

(CM) This is all dependent on where on the site the school will be, which hasn't been finalised as yet. There would need to be a two lane road at least with bus turning facilities.

16. (Public) I think it's a great idea to build a new West Calder High School it's a better option than refurbishing the old one. Are you at all worried that the Council may be forced into refurbishing the existing West Calder High School?

(CM) there are a number of statutory processes and there is a commitment to deal with this process, which involves engaging with all consultees on this. There is a great need to find a solution that best suits the local public.

17. (Public) I am not objecting to new school being built; just don't want it directly over my fence.

(CM) West Lothian Council will submit a planning application and objectors will need to be taken into account. Through engagement with the local community a solution may be found and will be dealt with as quickly as possible given the strict timescales.

18. (Public) The sports facilities in the old Deans High School were better than the current West Calder High School.

(MN) I encourage representatives of the parent council to arrange visits to Armadale Academy and the new Dean Community High School to see what kind of sports facilities are now being implemented in our new high schools. They are excellent.

19. (Public) What is the difference between West Calder and East Calder developer contributions?

(DM) there are 5000 houses that would be supporting the new secondary school and this relates to development at East Calder and West Calder. This scale of housing generates a new secondary school. One developer argues that they are paying for the new school but all developers contribute to this.

20. (Public) Is there a process for parent and members of the public to show their support for the proposal?

(MN) Yes if you refer to the consultation document on page 8 this shows you the details of where you can send an email or write to.

(PH) I am responsible to review the Educational Benefits Statement section within the consultation paper, I look at all comments and I make my recommendations.

21. (Public) My suggestion is for the land north of the A71 to be used for the new school as this would avoid any complaints from residents and land owners.

The timescales for delivering a site with landowners take a period of time for negotiations which may result in risk of losing the government funding which is tied to completion by 31 March 2018.

22. (Public) Would prefer to have access to school from the A71 not from the South side which would have less interference with green land loss. I feel more positive about the proposal.

23. (Public) Message is clear now regarding both the new West Calder High School and eventually the new East Calder High School, both are needed.

(MN) All necessary parent councils, community councils and CDT's have been notified regarding the new East Calder High School. This consultation is about a proposal to relocate West Calder High School and we need to hear your views on this issue.

Councillor David Dodds concluded the night thanking all present for attendance and encouraged those present to respond to the consultation.

Report by Education Scotland addressing educational aspects of the proposal by West Lothian Council to relocate West Calder High School.

1. Introduction

1.1 This report from Education Scotland has been prepared by HM Inspectors in accordance with the terms of the *Schools (Consultation) (Scotland) Act 2010* and the amendments contained in the *Children and Young People (Scotland) Act 2014*. The purpose of the report is to provide an independent and impartial consideration of West Lothian Council's proposal to relocate West Calder High School. Section 2 of the report sets out brief details of the consultation process. Section 3 of the report sets out HM Inspectors' consideration of the educational aspects of the proposal, including significant views expressed by consultees. Section 4 summarises HM Inspectors' overall view of the proposal. Upon receipt of this report, the Act requires the council to consider it and then prepare its final consultation report. The council's final consultation report should include a copy of this report and must contain an explanation of how, in finalising the proposal, it has reviewed the initial proposal, including a summary of points raised during the consultation process and the council's response to them. The council has to publish its final consultation report three weeks before it takes its final decision. Where a council is proposing to close a school, it needs to follow all legislative obligations set out in the 2010 Act, including notifying Ministers within six working days of making its final decision and explaining to consultees the opportunity they have to make representations to Ministers.

1.2 HM Inspectors considered:

- the likely effects of the proposal for children and young people of the school; any other users; children likely to become pupils within two years of the date of publication of the proposal paper; and other children and young people in the council area;
- any other likely effects of the proposal;
- how the council intends to minimise or avoid any adverse effects that may arise from the proposal; and
- the educational benefits the council believes will result from implementation of the proposal, and the council's reasons for coming to these beliefs.

1.3 In preparing this report, HM Inspectors undertook the following activities:

- attendance at the public meeting held on 20 January 2015 at St Paul's Primary School in connection with the council's proposal;

- consideration of all relevant documentation provided by the council in relation to the proposal, specifically the educational benefits statement and related consultation documents;
- consideration of written and oral submissions from parents and others; and
- visits to West Calder High School and East Calder, Mid-Calder, Parkhead, Addiewell and Woodmuir Primary Schools, including discussion with representative groups of staff, parents, children and young people in each school.

2. Consultation Process

2.1 West Lothian Council undertook the consultation on its proposal with reference to the *Schools (Consultation) (Scotland) Act 2010* and the amendments in the *Children and Young People (Scotland) Act 2014*.

2.2 West Lothian Council's consultation on the relocation of West Calder High School ran from 8 January to 23 February 2015. The council held two public meetings on 19 and 20 January 2015. The first of these was held in West Calder High School and the second was held in St Paul's Primary School in East Calder. The council consulted very well with children and young people in each school affected by the proposal. The council received over fifty written responses to the consultation. These included letters, emails and reports. The responses came from a wide range of individuals and groups. Over 20 of the responses gave clear support to the proposal. Many of the other responses received by the council posed questions or raised concerns about the consultation process or issues related to the possible site for the school. The council replied to all those who submitted a response. This included providing answers to specific questions.

3. Educational Aspects of Proposal

3.1 West Lothian Council proposes to relocate West Calder High School from its current site in Polbeth to a new build school in an area to the east of West Calder. The council proposes that the new school will be built by March 2018 with a phased opening from Easter 2018 to become fully operational by August 2018. The current school was built in 1965. Prior to October 2014, the council had planned to refurbish and extend West Calder High School on its existing site. However, an officer review of these plans identified constraints with this approach. The constraints principally related to the presence of an ethylene pipeline that crosses the current site. This would have required any further development of the site to be outside the protection zone of the pipeline. The council decided to pursue the option of relocating the school by building a new school on another site. To facilitate this, the council begun a site search. The proposed site at Parkhead, West Calder emerged as the most reasonable and viable option. The new school will be funded through the Scottish Schools for the Future programme. In order to meet the conditions for the funding of the new school through this programme, the school needs to be built by March 2018. The site identified for the new school is to the east of West Calder. The council believes that the proposed site will enable it to build the new school and have it fully operational within the timeline required by the arrangements for funding through the Schools for the Future programme.

3.2 West Lothian Council's proposal to relocate West Calder High School by building a new school in the Parkhead area of West Calder has the potential to be of significant educational benefit to the children and young people of the area. It also has the potential to bring benefit to the community through, for example, access to the enhanced community sports facilities and resources the council proposes to develop within the new school.

3.3 The principal educational benefit of the proposal will result from the significantly enhanced facilities the council proposes to provide at the new school. The council has given a commitment to ensuring the new school will be equipped with modern information and communications technology. The council has also given a commitment that the school will be designed to ensure young people have a full range of opportunities to experience appropriate breadth, continuity and progression in their learning across the broad general education to the end of S3. The council also proposes that the new build will give young people access to a range of enhanced provision in the senior phase of education from S4 to S6. This includes providing greater opportunities for vocational learning. In the proposal, the council indicates that the design and layout of the new school will be informed by recent new school builds that have taken place across Scotland.

3.4 Within the proposal, the council also gives a commitment to improving provision for young people with additional support needs. The existing school is on several levels. This means that access to some areas of the school is difficult for some users. The council has given a commitment to ensuring that the design of the new school will meet legislative requirements and make all parts of the school readily accessible for all users.

3.5 The current proposal contains no details of the proposed design and layout of the new school. There is also limited specific information about the enhanced facilities the council plans to include within the new school. For example, there is a swimming pool in the current school. The proposal document makes no reference to whether a swimming pool will be included in the new school. However, in a response to a question raised during the consultation period the council has indicated that the new school will have a swimming pool that will be at least the same size as the existing pool.

3.6 The council has given a reasonable assessment of the transport and travel issues associated with building the new school. The school is currently located to the east of the village of Polbeth. The proposed relocation of the new school to an area in the east of West Calder will mean the school is nearer to young people who live in West Calder. Those who live to the west of Polbeth will also live closer to the new school. Young people from the east of Polbeth will have further to walk. In taking forward the proposal, it will be important for the council to work on issues of transport to and from school for young people. This includes developing safe routes to school for those young people who will have to walk further to school. Young people who will attend the school and live in Breich, Addiewell, Mid Calder and East Calder will continue to receive free transport to school.

3.7 In considering the educational aspects of the proposal, HM Inspectors met with representative groups of parents, staff, children and young people at each of the

schools directly affected by the proposal. Parents and staff who met with HM Inspectors were very positive about the proposal and gave it their full support. Children and young people were excited by the prospect of being able to go to the new school and were very positive about the proposal.

3.8 During the consultation period, the council received a wide range of responses to the proposal. The responses raised a number of issues. A number of these were linked to perceived problems associated with access to the site during the construction phase and once the new school is open. The proposal sets out two options for access to the school and the council used the consultation process to seek the views of consultees on these two options. If the council chooses to proceed with the proposal, it will need to address the issues of access to the site of the school as a matter of some urgency if it is to complete the new school by March 2018 and make it fully operational from August 2018.

3.9 Some consultees from East and Mid Calder were concerned that implementation of the proposal would delay any plans to build a new school in the east of the current catchment area. However, in both the consultation report and in answers to questions raised during the consultation, the council indicated that the building of the new school in West Calder was the first step in the implementation of a long-term strategy for the provision of two non-denominational secondary schools for the East, Mid and West Calder areas.

3.10 Many parents and staff felt that car parking facilities and arrangements for school buses at the current school were inadequate. The council needs to ensure that there are sufficient spaces within the site of the new school for car parking and for school buses to enter and leave the school safely at the beginning and end of the school day.

3.11 Some consultees raised concerns about the potential environmental impact of the new build. This included concerns about the number of trees that would be cut down to facilitate building the new school and the potential adverse impact on the community garden. A number of local residents did not feel that they had been fully consulted by the council. They raised a number of objections to the council's plans to build the new school on the proposed site.

4. Summary

4.1 West Lothian Council's proposal to relocate West Calder High School in a new purpose-built school by August 2018 has the potential to deliver significant educational benefits to the children and young people directly affected by it. These benefits will derive largely from the enhanced facilities the council proposes to provide at the new school. However, at the time of the consultation, the council had yet to produce detailed plans for the design and layout of the new school. The proposal has the clear support of parents, staff, children and young people. The proposal also has the potential to have a positive impact on the local community through the provision of enhanced facilities and resources for community use.

4.2 During the consultation, some consultees raised a number of issues in relation to the siting of the school. These included concerns about arrangements for access to the site during the construction phase and once the school is fully operational.

Other concerns raised by those who responded to the consultation related to transport to and from school, including safe routes to school, and the provision of adequate car parking and facilities for school buses. Some consultees raised concerns about the impact on the local environment of the new school.

4.3 In taking forward the proposal, the council will need to continue to work with and consult staff, parents, children, young people and the local community to address their concerns and to ensure that the significant potential educational benefits of the proposal to relocate West Calder High School in a new purpose built school are realised in full.

**HM Inspectors
Education Scotland
March 2015**

Power Point Presentation – Public Meetings

Proposal to Relocate West Calder High School

Public meetings 19-20 January 2015



westlothian.gov.uk



West Lothian
Council

Legal Context

Any proposal to change the site of a school requires a formal consultation process in terms of the Schools (Consultation) (Scotland) Act 2010.

The formal consultation is only concerned with the proposal to relocate West Calder High School.

The consultation involves the parents/carers/children and staff of West Calder High School, as well as other key stakeholders associated with the school and statutory consultees.

Present school and site

- Opened in 1965
- Various accommodation changes
- School census pupil roll was 863 pupils, 475 on transport assistance
- Current capacity is 1,100 pupils

West Calder High School Site



westlothian.gov.uk



West Lothian
Council

Proposal

- Deliverable site that deals with timeline and constraints
- 39 ha site at Parkhead Primary school selected
- Less than 50% will be required
- Various access routes are available
- Detailed design would seek to optimise existing uses and access points

Proposed Parkhead site



westlothian.gov.uk



West Lothian
Council

© OGIS 2014



westlothian.gov.uk



West Lothian
Council

Benefits

- Relocation creates opportunity to build a new, accessible and inclusive modern school
- Proposed site could enable Parkhead Primary School to make direct use of the new school facilities
- Proposed site would increase the number of pupils (current and future) within walking distance of the school

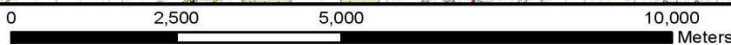
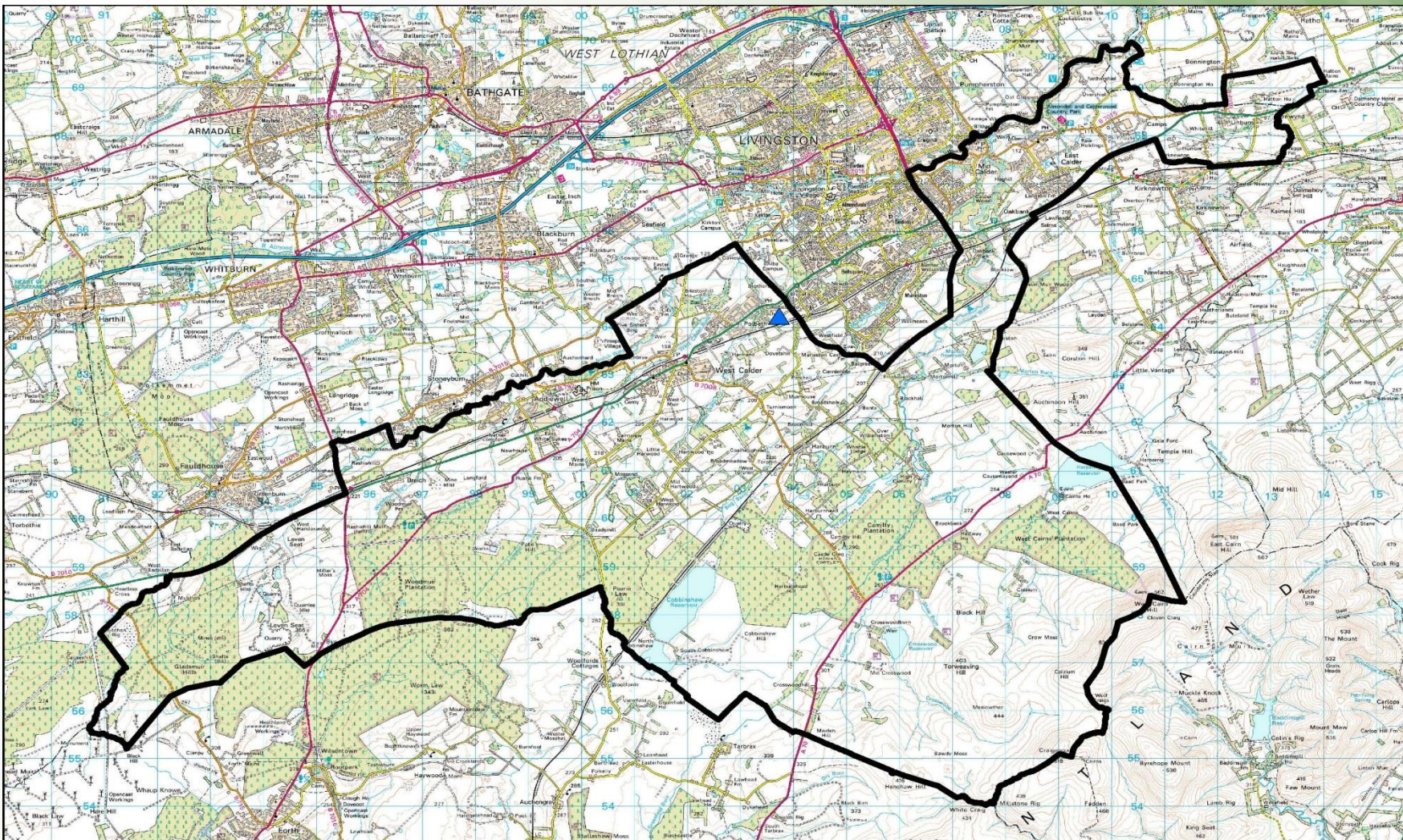
Questions





westlothian.gov.uk



West Lothian
Council



West Calder High School
Catchment Area

- Legend
-  secondary school
 -  Catchment area

PAndI 07/09/12

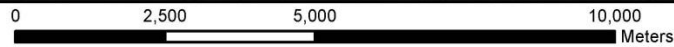
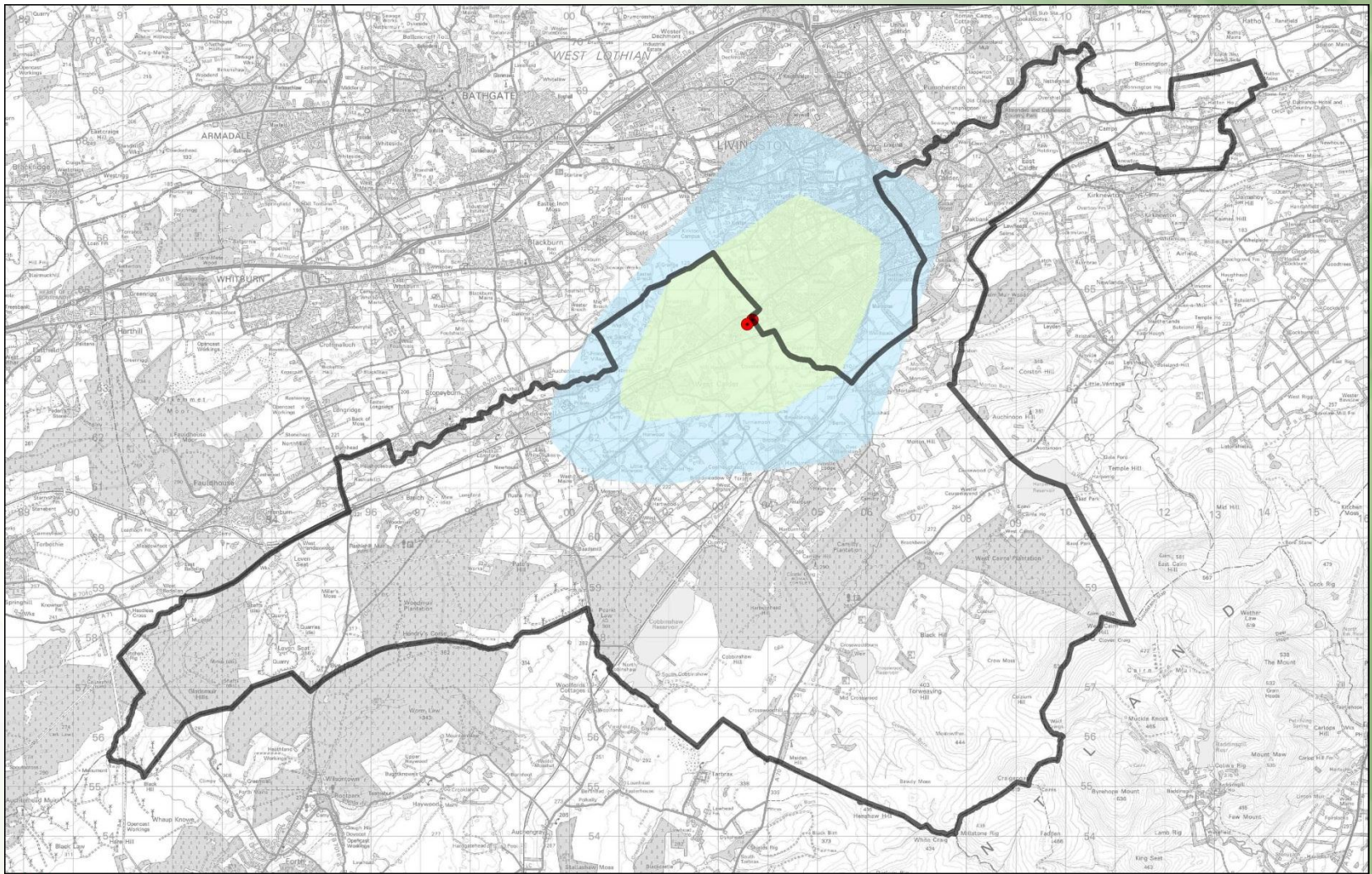


© 2012 copyright and database right 2012.
All rights reserved. Ordnance Survey Licence number 100037194







westlothian.gov.uk





**West Calder High School
2-mile and 3-mile service areas**

Legend

-  catchment area
-  school gates
-  2-mile service area
-  3-mile service area

PAndl 20/08/14



© Crown copyright and database right 2014.

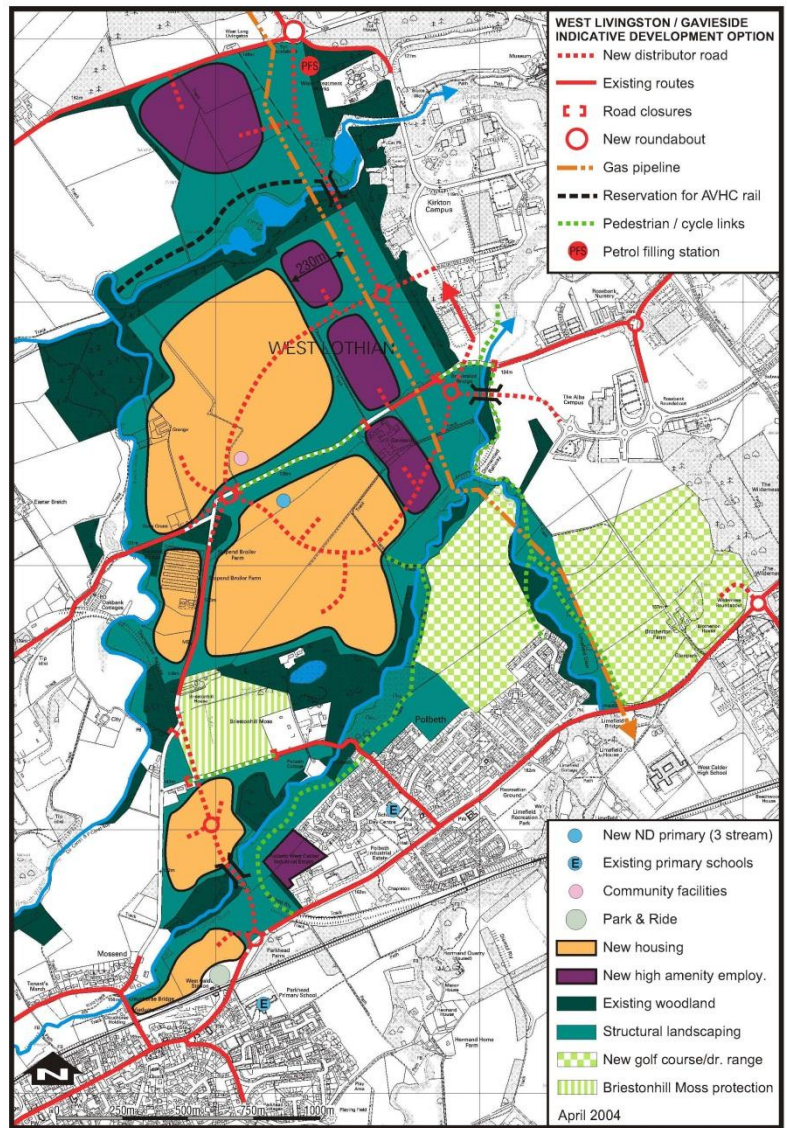
All rights reserved. Ordnance Survey Licence number 100037194



westlothian.gov.uk



**West Lothian
Council**



Base_AULP Summary of Secondary School Roll Forecasts as at 18/12/13

School	2012	2013	2014	2015	2016	2017	2018	2019	2020	2021	2022	2023	Current Capacity
ARMADALE	781	794	785	847	903	943	1011	1057	1107	1159	1224	1259	1210
BATHGATE	901	882	801	788	815	847	876	917	936	996	1035	1049	1210
BROXBURN	905	851	819	852	873	916	959	1024	1072	1114	1177	1205	1210
DEANS	943	945	971	998	1013	1010	1040	1043	1048	1042	1022	996	1100
INVERALMOND	1096	1084	1013	995	987	981	991	985	991	989	987	988	1320
LINLITHGOW	1233	1203	1217	1220	1246	1290	1325	1387	1436	1496	1549	1545	1320
ST KENTIGERN'S	1218	1180	1168	1200	1224	1262	1309	1360	1386	1419	1462	1475	1430
ST MARGARET'S	1097	1116	1091	1128	1160	1154	1167	1205	1218	1244	1270	1305	1100
THE JAMES YOUNG	1136	1134	1136	1115	1094	1059	1029	1015	1015	1014	974	918	1210
WEST CALDER	957	916	879	888	904	926	946	954	998	1039	1075	1104	1100
WHITBURN	822	800	752	747	752	768	782	787	789	784	796	805	1210
West Lothian	11089	10905	10632	10778	10972	11157	11437	11735	11995	12295	12570	12647	13420

- Note 3,644 houses scheduled after forecast period above