



Parent Council Forum
Thursday 27th February

Curriculum and Learning

Agile
Learning
CULTURE



...knowledge, understanding, skills
and attributes required to thrive in a
rapidly changing world.

*Create the conditions, culture and ethos for **ALL** 4 capacities to thrive and be equally valued.
Every young person experiences varied, vibrant and challenging learning*

COURAGE RELATIONSHIPS VALUES RELEVANCE



West Lothian Curriculum Vision

*Create the conditions, culture and ethos for **ALL** 4 capacities to thrive and be equally valued. Every young person experiences varied, vibrant and challenging learning*

Professional reading and Research

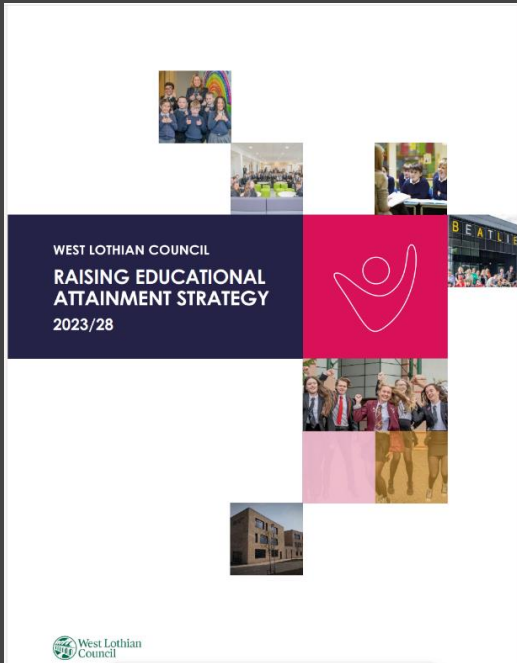
National and local guidance

Analysis of Data

Challenge and support

Engaging stakeholders

COURAGE RELATIONSHIPS VALUES RELEVANCE



Learning and Curriculum

Ensuring every child and young person experiences varied, vibrant and challenging learning experiences which are built on the provision of high quality and inclusive learning, teaching and assessment. Fundamental to this is the design and implementation of a curriculum that creates the conditions, culture and ethos for all 4 capacities to thrive and be equally valued.

Wellbeing, Inclusion and Attendance

Improving wellbeing, inclusion and attendance for all children and young people, promoting confidence, independent thinking and resilience. Fundamental to this is working with families and partners to support the highest possible levels of engagement and equity for all.

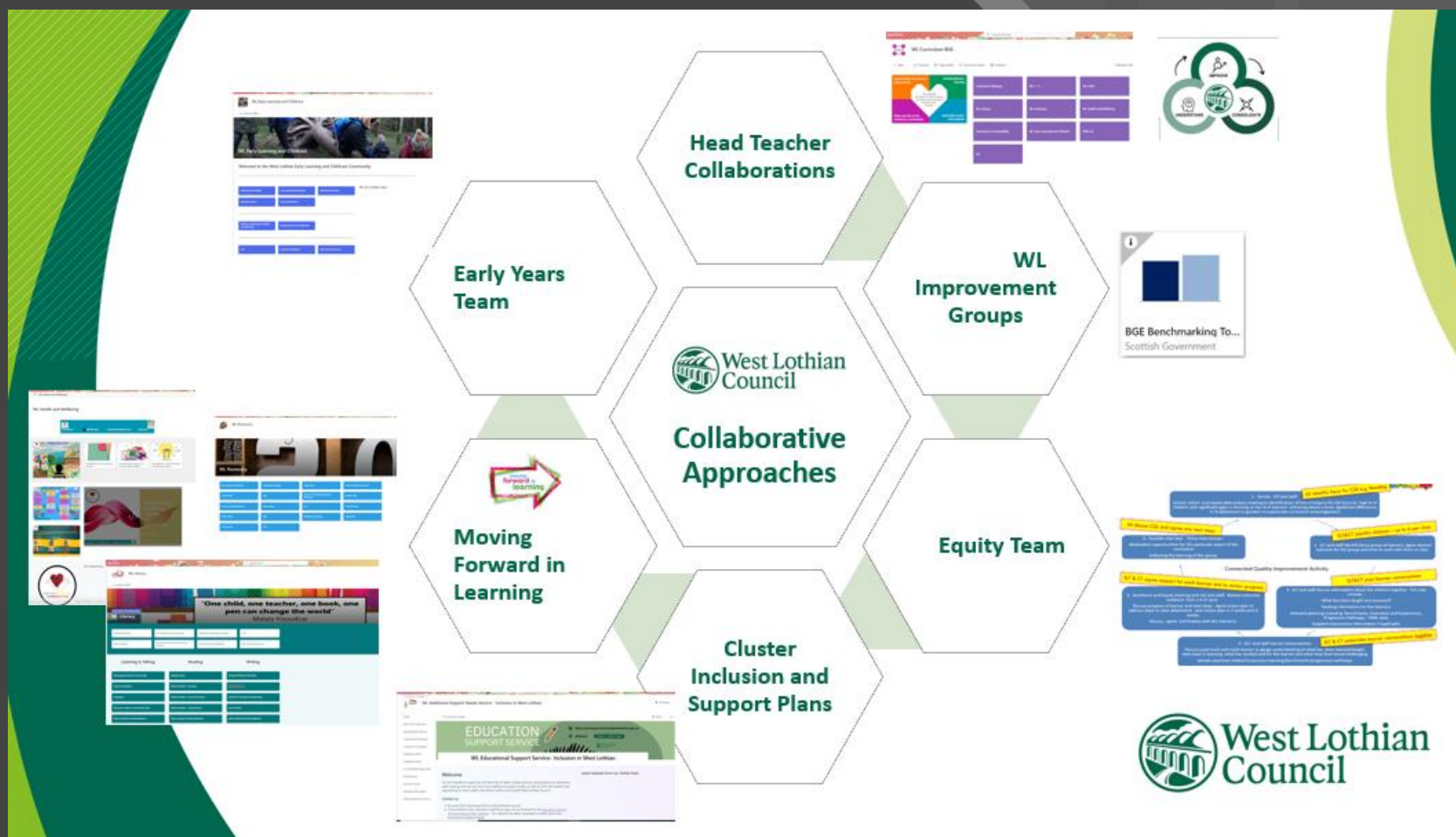
- Ensure strategic improvements continue to **refine systems, frameworks and guidance to support and challenge schools** to build on and improve curriculum design and delivery.
- Work with schools to ensure the curriculum is **co-designed with learners, parents, carers and partners, with engaging and motivating pathways** from Early Learning, through Primary and the Broad General Education and into the Senior Phase. Well researched plans, taking **cognisance of national developments**, should be developed to support this across schools and clusters, with meeting the needs of all learners as a central focus.
- Ensure all establishments effectively use self-evaluation frameworks, approaches and performance information to ensure educational outcomes are improving. This includes supporting **young people's and partners' participation in self-evaluation and school improvement and curriculum co-design**

*Create the conditions, culture and ethos for **ALL 4 capacities to thrive and be equally valued**.
Every young person experiences varied, vibrant and challenging learning*

COURAGE RELATIONSHIPS VALUES RELEVANCE



West Lothian: Collaborations and Networks

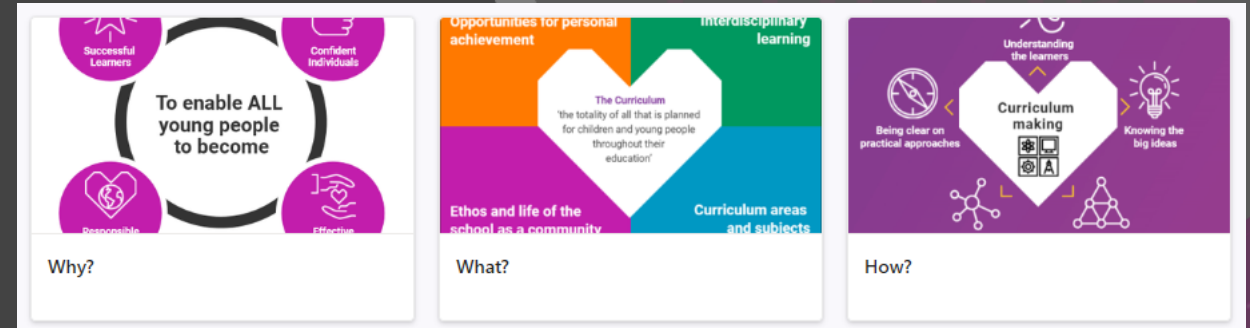
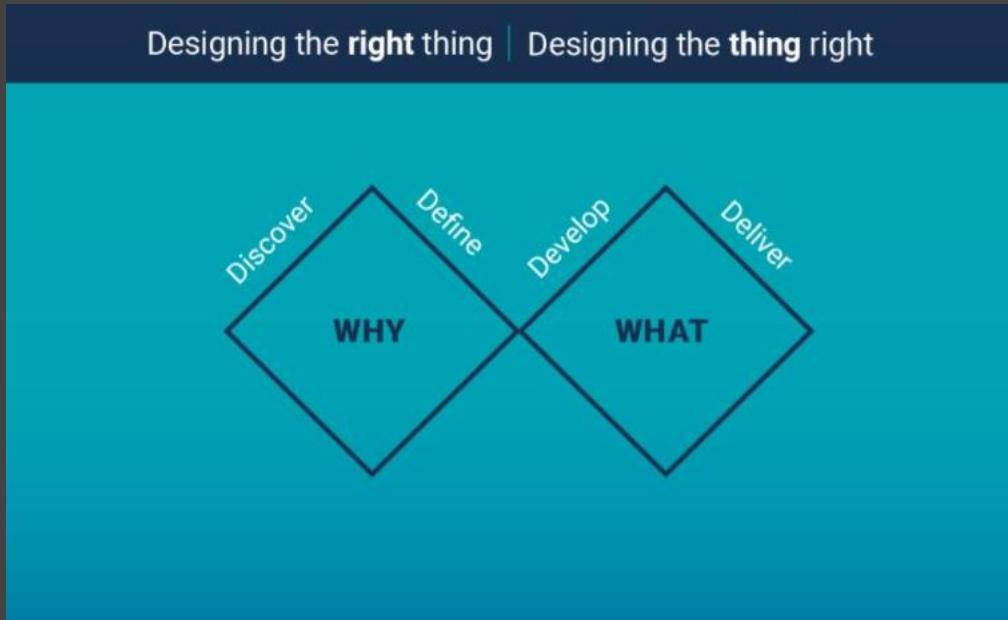


*Create the conditions, culture and ethos for **ALL** 4 capacities to thrive and be equally valued.
Every young person experiences varied, vibrant and challenging learning*

COURAGE RELATIONSHIPS VALUES RELEVANCE



Service Design: Curriculum Development



...knowledge, understanding, skills and attributes required to thrive in a rapidly changing world.

Create the conditions, culture and ethos for **ALL** 4 capacities to thrive and be equally valued.
Every young person experiences varied, vibrant and challenging learning

COURAGE RELATIONSHIPS VALUES RELEVANCE



West Lothian Curriculum Journey

Head Teacher Collaboration
23/24

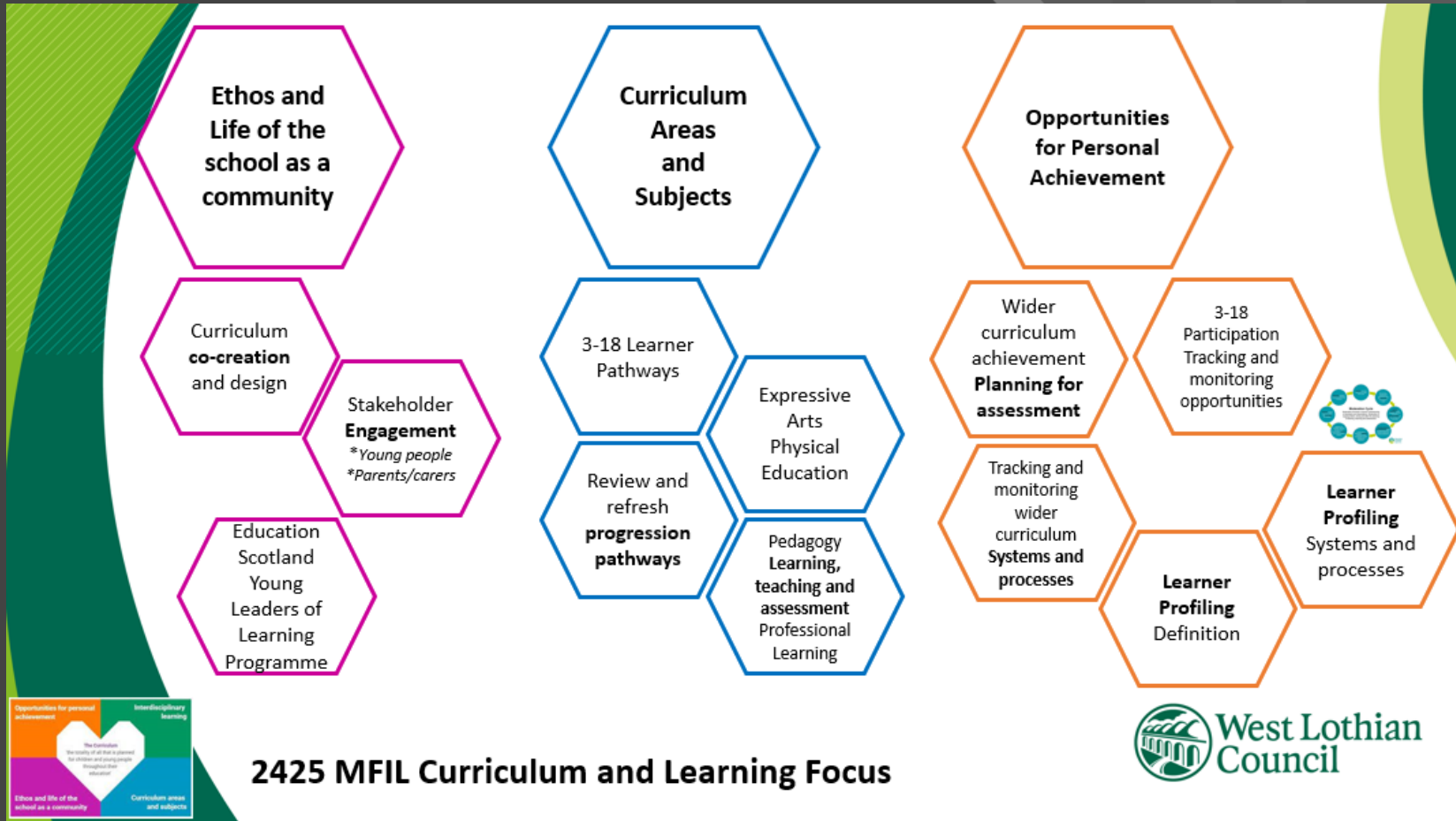
*Create the conditions, culture and ethos for **ALL** 4 capacities to thrive and be equally valued.
Every young person experiences varied, vibrant and challenging learning*

*...knowledge, understanding, skills
and attributes required to thrive in a
rapidly changing world.*

COURAGE RELATIONSHIPS VALUES RELEVANCE



MFIL: Curriculum and Learning

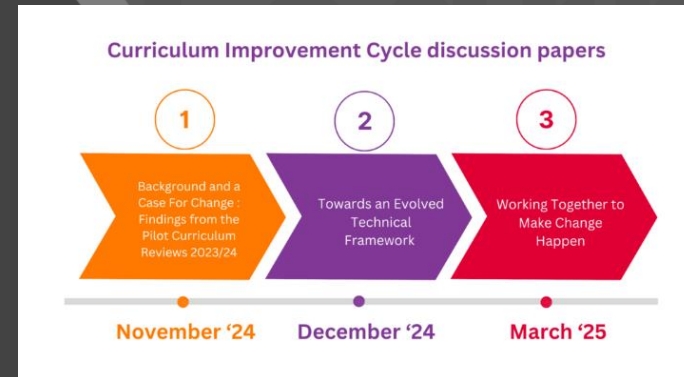
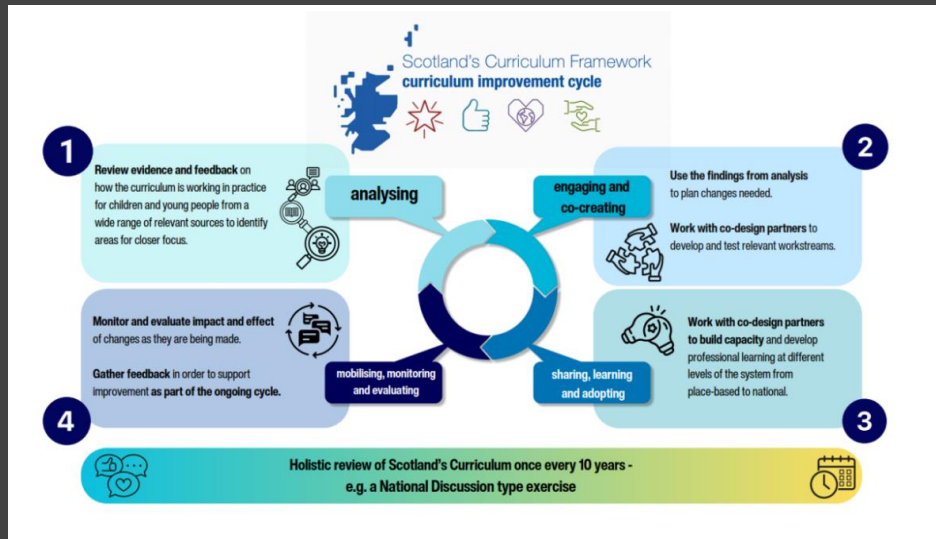


*Create the conditions, culture and ethos for ALL 4 capacities to thrive and be equally valued.
Every young person experiences varied, vibrant and challenging learning*

COURAGE RELATIONSHIPS VALUES RELEVANCE



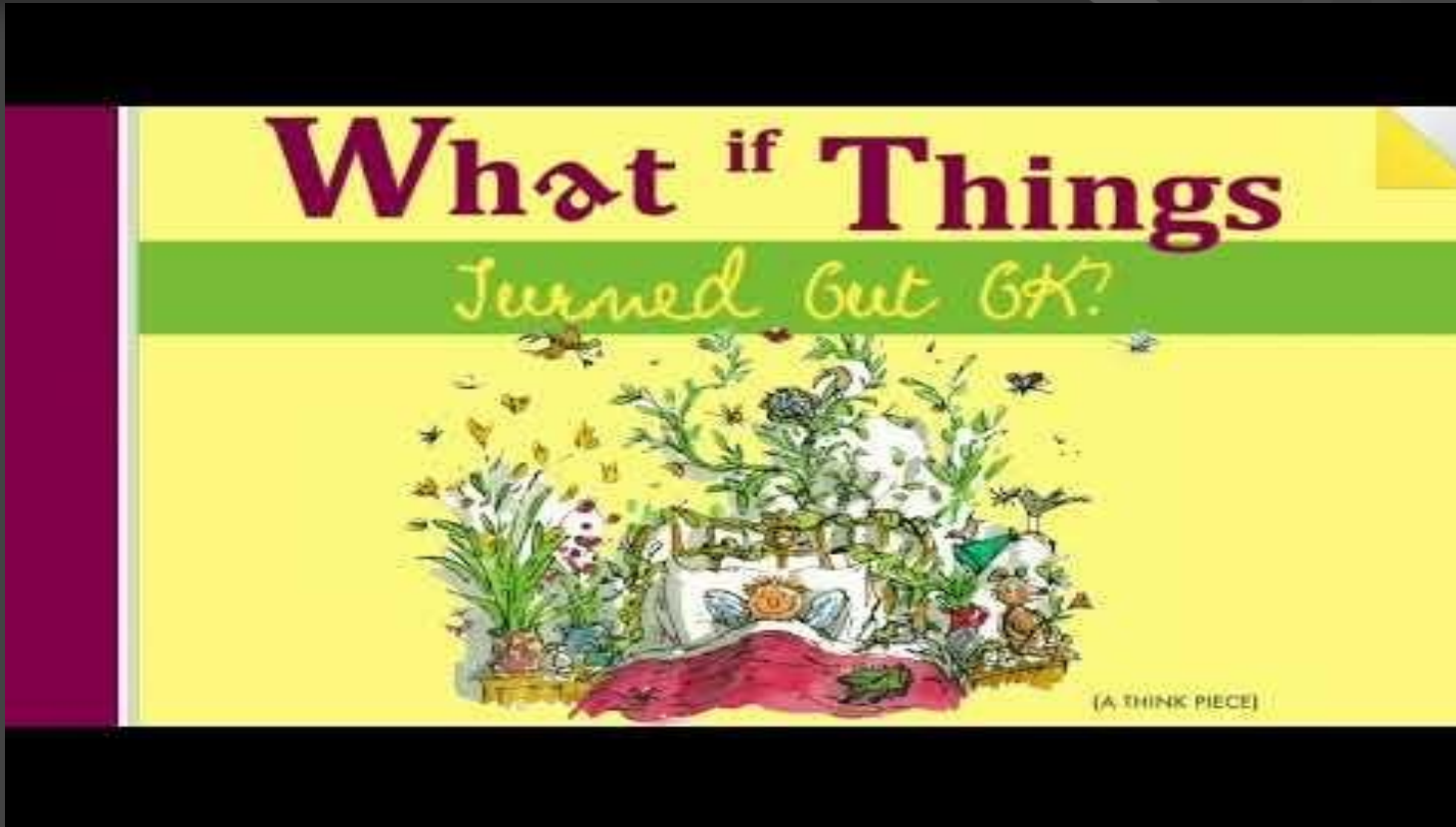
Education Scotland: Curriculum Improvement Cycle



1. Background: Case for Change (November 24)
2. Towards a Technical Framework (December 25)
3. Working Together to Make Change (March 25)

Create the conditions, culture and ethos for **ALL 4 capacities to thrive and be equally valued.**
Every young person experiences varied, vibrant and challenging learning

COURAGE RELATIONSHIPS VALUES RELEVANCE



What if.....?

*Create the conditions, culture and ethos for **ALL** 4 capacities to thrive and be equally valued.
Every young person experiences varied, vibrant and challenging learning*



...knowledge, understanding, skills and attributes required to thrive in a rapidly changing world.

COURAGE **RELATIONSHIPS** **VALUES** **RELEVANCE**