



**FAULDHOUSE AND BREICH VALLEY
LOCALITY PLAN**

2023-2026

FAULDHOUSE AND BREICH VALLEY

LOCALITY PLAN

2023-2026

Contents

Introduction	3
Fauldhouse And Breich Valley - Local Context	4
Locality Planning Achievements to date	6
Planning Structures and Partners	7
Physical Assets	7
Key Community Organisations	8
Developing the Action Plan	9
Local engagement and localised data - Tools and approaches used	
Engagement	10
Identified Priorities	11
Fauldhouse And Breich Valley – Action Plan	12

Introduction

The Community Empowerment (Scotland) Act 2015, requires Community Planning Partnerships (CPPs) to develop locality plans for specific areas experiencing poorer outcomes. In West Lothian, these areas have Outcome Improvement Plan (LOIP) is delivered meaningfully at a local level and that local issues identified by communities can influence CPP activity.

The Community Wealth Building Team manages the development and delivery of locality plans – creating a link between the LOIP, other key strategic partnership plans and structures, and the communities in West Lothian's most deprived areas.

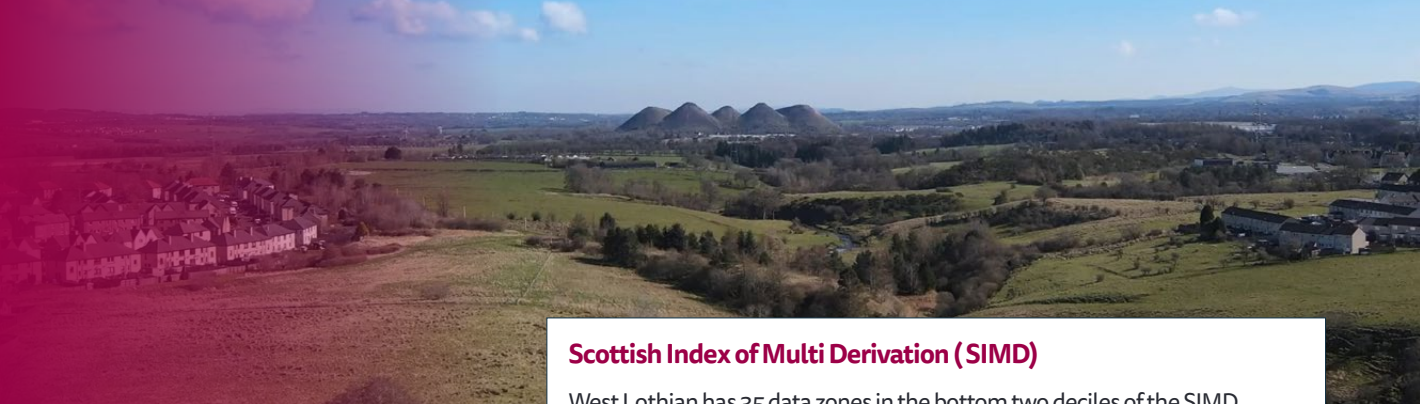
This locality plan is one of six across West Lothian that aims to put the identified communities at the centre of its approach to tackling inequalities.

Priorities identified through engagement at a local level will be fed up to Community Planning partners and other key services. Services will also work with local communities to address issues identified through evidence and data.

The plan will provide a platform at a local level to deliver the key strategic themes of Community Wealth Building, as well as implementing the main mechanisms of the Community Empowerment Act such as community participation, participatory budgeting and community asset transfer.



⋮ Fauldhouse And Breich Valley



LOCAL CONTEXT

The Fauldhouse and Breich Valley ward is comprised of seven villages. It is an area steeped in the history of mining. The plan focuses on the four communities which have significant deprivation within them.

Addiewell and Loganlea has a population of 1,280 a former mining village the settlements began as farmland dating back to 1762. The Skolie Burn area is a site of special scientific interest and home to a rare orchid

Fauldhouse has a population of 4,900, a large village almost in the exact centre of Scotland's central belt. A former mining community and at 750 feet above sea level,

one of the highest villages in West Lothian.

Polbeth with a population of 2,380 is located about a mile from West Calder and three miles from Livingston. The Five Sisters shale bing, a historic local landmark, is located a mile west of the village.

Stoneyburn and Bents has a population of 1,980 is situated two miles away from Junction 4 of the M8 giving it access to Glasgow and Edinburgh. Despite its location on the central belt it has a semi-rural feel, surrounded by dairy farms and fields.

Source: National Records of Scotland

Scottish Index of Multiple Deprivation (SIMD) and other key data

Fauldhouse and the Breich Valley have been identified as an area requiring a locality plan due to four areas containing a number of data zones, or neighbourhoods, ranked in the bottom 20% in the SIMD.

The SIMD ranks data zones based on scores across the following seven domains:

- Income
- Employment
- Health

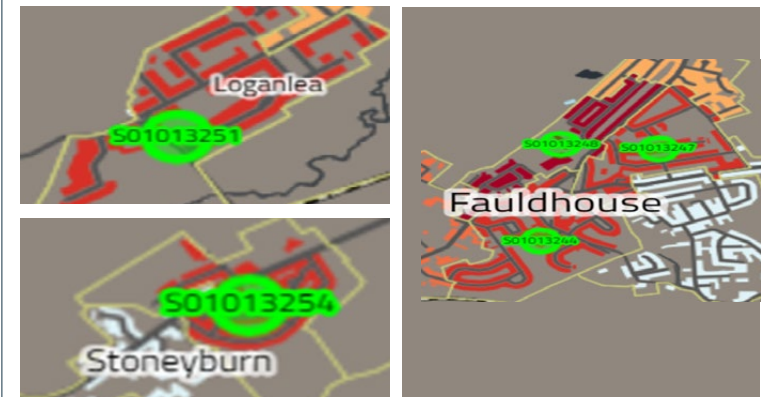
- Education/Skills
- Housing
- Geographic Access
- Crime

All elements are made up of a range of factors. For example, health is made up of alcohol, drugs, mortality, depression, low birth weight and emergency hospital admissions.

4 Fauldhouse and Breich Valley - Locality Plan

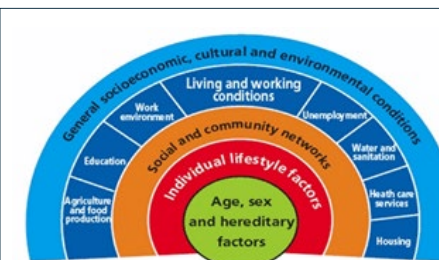
Scottish Index of Multi Derivation (SIMD)

West Lothian has 35 data zones in the bottom two deciles of the SIMD, as shown [here](#). One is in Addiewell, three are in Fauldhouse and one is in Stoneyburn as shown in these maps.



Breaking down the SIMD data further:

Fauldhouse - One data zone is in the bottom 10% overall in Scotland, emphasising its unique socioeconomic characteristics of the community.



The social determinants of health in the diagram above have a greater influence on our physical and mental health than health care systems, these need to be included when looking at reducing inequalities in our most deprived areas.

Source: Dahlgren and Whitehead (1991)

⋮ Fauldhouse and Breich Valley

LOCAL CONTEXT

Foodbank vouchers

10,962 foodbank vouchers were distributed in West Lothian's wards in the financial year 2022/23. Of these, almost 1288 were distributed in Fauldhouse and Breich Valley

About 25.7% of the West Lothian population - were beneficiaries of the foodbank vouchers. In comparison, 14.1% of the child population and 6.6% of the adult population of Fauldhouse and Breich Valley received help in the form of a food voucher.

Source West Lothian Foodbank

School Leaver Destination Statistics 2022/23

	West Lothian	Polbeth	Breich Valley	Fauldhouse	West Calder
Employed	22%	32%	11%	28%	55%
Further Education	35%	35%	39%	44%	11%
Higher Education	25%	12%	39%	8%	11%
Training	5%	15%	-	16%	11%
Unemployed Not Seeking	4%	-	11%	-	11%
Unemployed Seeking	6%	6%	-	4%	-
Other	2%	-	-	-	-
Negative Destination	10%	6%	11%	4%	11%

Children in Low Income Families 21/22

The average number of children in low income families in West Lothian is 19.9%. Within Fauldhouse and the Breich Valley 15 data zones out of 21 are above the West Lothian average of 1 in 5 children living in low income families. The following data zones are around double the West Lothian average:

Fauldhouse 05 (S01013247)- 38.6%
Breich Valley 02 (S01013251)- 36%
Breich Valley 05 (S01013254)- 40.7%
West Calder and Polbeth 06 (S01013261)- 39.5%

Source: Scottish Government

5 Fauldhouse and Breich Valley - Locality Plan

Claimant Count - Mar 24

Addiewell and Loganlea	5.5%
Fauldhouse	4.3%
West Calder	3.2%
Polbeth	4.1%
Stoneyburn and Bents	4.4%
West Lothian	2.8%

Source: Office for National Statistics

Children Accessing non-Universal Free School Meals

Fauldhouse and Breich Valley	22.84%
Fauldhouse	23.17%
Polbeth	33.67%
Stoneyburn	35.59%
West Calder	16.98%
West Lothian	16.8%

Source: Scottish Government

Percentage of Population that live within 500m of a Derelict site

West Calder and Polbeth	53.6%
Fauldhouse	46.3%
West Lothian	16.2%

Source: Scottish Government

Localities Planning Achievements to date

This new locality plan follows on from previous plans across the ward that have been in place since in 2018. Well established local steering groups in the four areas, made up of key community organisations and partners, have helped to develop local structures and deliver the actions within these plans. Some achievements from the previous plan are shown below. Several of these areas of work will carry forward into the new action plan for 2023 - 2026.

Town Centre Regeneration Funding

£445,482.68 bid for and utilised locally on community projects across the ward.

Addiewell & Loganlea	£78,701.48
Fauldhouse	£92,084.43
Polbeth	£83,669.25
Stoneyburn	£96,989.26
West Calder	£92,084.43

Capacity Building

The Community Wealth Building team has worked closely with several community groups, including Fauldhouse and Breich Valley CDT, Polbeth HUB and Stoneyburn and Bents Future Vision Group, to support the development of local projects and funding applications, liaising with a range of services to deliver projects throughout the process.

The team initiated the Aspiring West Lothian project in partnership with West Calder and Harburn CDT. This successful application brought investment of £248,000 to five areas of deprivation within West Lothian including Polbeth to employ a full-time development worker for 16 months to help transform the Polbeth HUB into a key community organisation. As a result of the project the capacity of the community organisations has improved in the area.

Partnerships

Creation of a range of structures has enabled successful partnership working within the villages of Fauldhouse and the Breich Valley. These relationships work towards addressing the issues/priorities in the communities.

Delivery of the Heartlands Developer Contributions

£18,938 allocated across three projects in Fauldhouse improving the landscape and town centre.

Community Asset Transfer

Fauldhouse and Breich Valley successfully completed the Asset Transfer of Eastfield Development Centre from West Lothian Council. This is now a community run and owned facility in Fauldhouse.

Park and Play Area Improvements

Park Improvement works carried across the ward including Ennis Park and Langside Gardens Polbeth. Improvement works scheduled for Addiewell Community Centre Kick Pitch and Meadowhead Crescent Play Area.

Supported the successful application for Place Based Investment Funding by key community organisations

West Calder HUB - £140,265
Fauldhouse and Breich Valley CDT - £71,049
West Calder and Harburn CDT - £204,000

Key Community Organisations Supported by West Lothian Council's Voluntary Organisations budget 2021-2024

Fauldhouse and Breich Valley CDT (£52,005), Polbeth HUB (£69,495.25) and Stoneyburn and Bents Future Vision Group (£11,323) supported through the fund for the development and delivery of projects to support these local communities.

Specific Projects

Identified a number of community projects and successfully supported services and local groups to develop including:

- the Skolie Burn in Addiewell which is an area of Scientific Significance.
- On-going path development support within Stoneyburn and Bents,
- Establishment of Addiewell community garden.
- Limefield Falls Fish Pass completed in Polbeth
- Miners Statue in Fauldhouse officially unveiled in July 2022.
- Stoneyburn War Memorial lighting installed in Autumn 2021.
- Establishment of Miners Memorial Cairn in Stoneyburn 2024
- Growth and development of Community Woods and Garden, Polbeth and West Calder

📍 Planning Structures and Partners

In Addiewell and Loganlea, Fauldhouse, Polbeth and Stoneyburn and Bents, there are established locality planning groups that involve local community organisations and community planning partners.

These local groups:

- share information on service provision/activities within the locality to help enhance current, and plan future, provision;
- help identify wider community needs from a services perspective;
- are a conduit for wider community engagement;
- help develop collaborative working at local level; and
- where a local community led plan is established, work collaboratively to embed activity that aligns with community needs.

These groups are specific to each area and have adapted over time to what works best. They will continue to evolve as required going forward.

📍 Physical Assets

There are key physical assets within each area. These include:

Fauldhouse and Breich Valley CDT's Eastfield Centre and Hub on the Main Street

Open play areas and parks

Polbeth HUB

Places of Worship

Local Sporting Facilities

Addiewell Community Garden

Skolieburn

Miners Welfares – Addiewell and Fauldhouse

Stoneyburn Workshops

Local schools

Fauldhouse Partnership Centre



Key Community Organisations/Groups

There are also key community organisations that are important to Fauldhouse and Breich Valley. They provide a range of services and a voice for the community and offer help to community planning partners looking to engage or deliver in these areas. In Fauldhouse and Breich Valley the key community organisations are

Fauldhouse and Breich Valley CDT	Stoneyburn Management Committee	Addiewell and Loganlea Miners	Community Councils	Fauldhouse Community Youth Target (FCYT)
Stoneyburn and Bents Future Vision Group	Fauldhouse Gala Day	Polbeth HUB	Community Woods and Garden, Polbeth and West Calder	Fauldhouse Partnership Centre Management Committee
MOOD Group	Addiewell Management Committee			

The following services and organisations also have an important role to play in the locality planning process in Fauldhouse and Breich Valley:

WLC Housing	WLC NETs, Land and Countryside	Carers of West Lothian	Youth Action Project	Sports Clubs
Police Scotland	Safer Neighbourhood Team	Community Wealth Building Team	CLD Youth Services	Local Churches
WLDAS	NHS	WLC Planning	WLC Adult Learning	Local Schools and nurseries
Safer Neighbourhood Team	Citizens Advice Bureau	Advice Shop	Active Schools and Community Sport	West Calder and Harburn CDT
Forestry and Land	Customer and Community Services	Scottish Fire and Rescue Service	Access2employment	The Larder

🔗 Developing the Action Plan

In developing the actions within the plan, consideration has been given to data gathered from a range of sources.

This includes:

- the findings from recent community engagement carried out by the Community Wealth Building Team and partner organisations;
- statistical information relevant to the local area;
- mapping of key services and organisations that deliver activity in the area; and
- linking to priorities within the LOIP and other key strategic documents and plans.

This is a live document which seeks to build on the actions from the previous plan, continuing to develop the provision, capacity and sustainability of partners in the community, and taking an asset-based approach wherever possible.

The plan will help to empower the community and support organisations to bring external funding into the area.

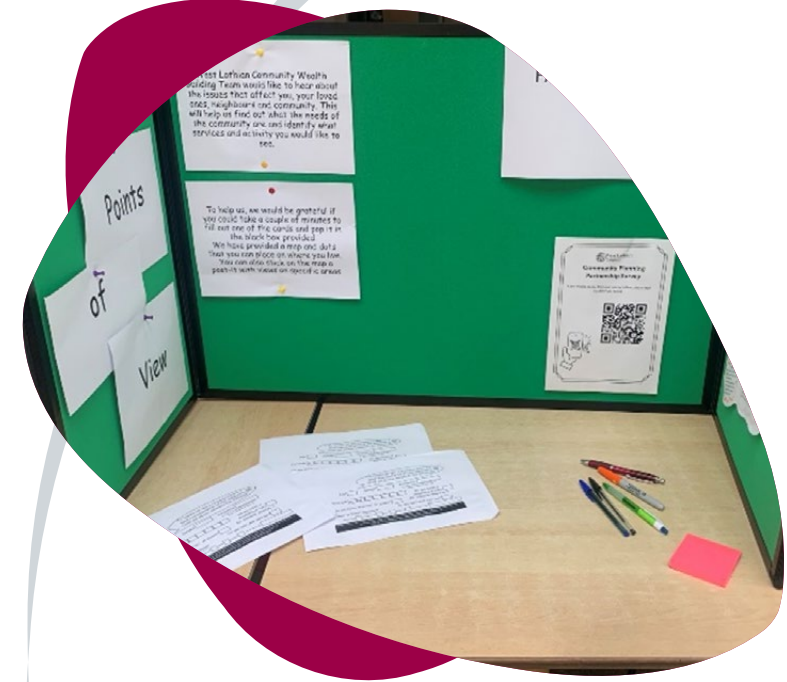
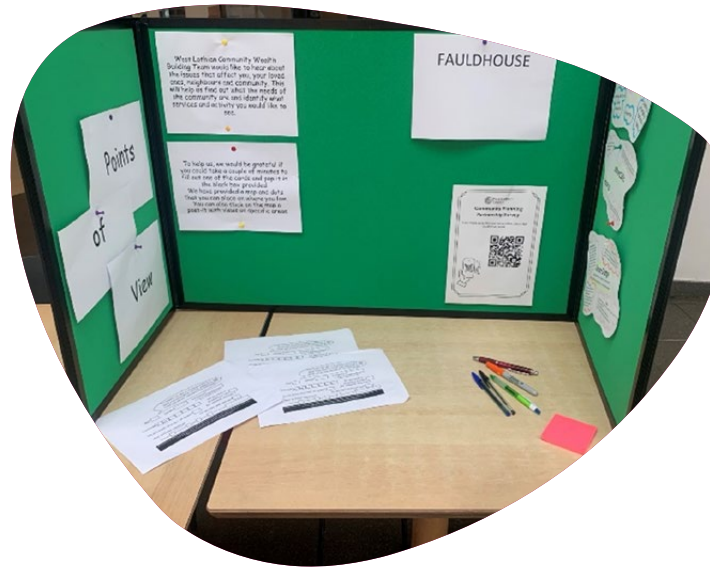
🔗 Local engagement and localised data - Tools and approaches used

Various community engagement methods and tools have been utilised across the villages to help determine the community's priorities. Additional engagement carried out by partners was also used to provide a clear picture of what matters to those who live, work and visit the four villages. Examples of approaches used include:



Engagement

Specific engagement within local primary schools was carried across the ward. This sought the views from younger community members and was an important element in helping to determine the priorities for both areas.



When all the engagement materials were collated it provided a snap shot of what the communities felt were their priorities and would like to see addressed. In order to understand the level of need and to provide evidence to back up the need, further research utilising key statistical data was incorporated. The data sources analysed came from the Scottish Public Health Observatory (ScotPho) and Scottish Index of Multiply Deprivation (SIMD) along with local partner intelligence.

All findings were presented to the relevant steering groups that have been set up in each area to work on the actions within the plan. These groups are made up of a range of services, organisations, third sector working groups and local community members who influence and support the work being delivered within their areas.

Polbeth Group

Addiewell and Loganlea Group

Fauldhouse Group

Stoneyburn and Bents Group



📍 Identified Priorities

Following intensive engagement, analysis of local data relevant to West Lothian and Scotland and feedback from services, the following key priorities have been identified as the focus in the Fauldhouse and the Breich Valley. Further community priorities, not presented below that aren't aligned to data and service priorities will be addressed through local plans and joint working locally.

Fauldhouse and the Breich Valley

Poverty, Employability and Skills

- Addressing the impacts of the cost of living through specific local projects
- Addressing economic inactivity, unemployment, underemployment and skills needs
- Addressing child poverty locally

Health and Wellbeing

- Tackling social exclusion and reducing isolation
- Reducing health inequalities focussing on the social determinants of health
- Working to improve mental health within the community

Environment

- Addressing Antisocial Behaviour issue that arise
- Exploring green transport and community transport options
- Exploring opportunities to improve the visual environment

Community Development

- Building community capacity
- Improve communication channels between services and the community around key priorities
- Increase partnership working between all services and the community

∴ Fauldhouse and Breich Valley – Action Plan

LOIP Pillar and Strategic Partner actions to be addressed at community level through Local Plans

Change/ Outcome/ Objective	Action	Lead Agency (bold) Other partners	Where does action area come from	Links
Increase the capability of local communities and services to support health and wellbeing through a preventative approach to population-level mental wellbeing	<p>Develop and raise awareness of a specific '6 ways to Wellbeing' model through mapping and increase understanding in Fauldhouse and Breich Valley with partners.</p> <p>Map community assets/resources/ support for mental wellbeing and identify gaps and responses</p> <p>Deliver training to the community and practitioners on Mental Health First Aid</p>	<p>NHS Lothian</p> <p>Community Wealth Building</p> <p>West Lothian Council</p> <p>Local Third Sector</p> <p>Fauldhouse and Breich Valley Community Groups</p>	LOIP Pillar Working Group	LOIP Pillar – Improving Health & Wellbeing
Develop local awareness around the impact of substance use and health	Develop a preventative approach to alcohol within the relevant communities.	<p>NHS Lothian</p> <p>West Lothian Council</p> <p>West Lothian Drug Alcohol Service (WLDAS)</p> <p>West Lothian Youth Action Project</p> <p>Police Scotland</p> <p>Fauldhouse and Breich Valley Community Groups</p>	<p>LOIP Pillar Working Group</p> <p>Alcohol and Drug Partnership</p> <p>Prevention and Early Intervention Group</p>	LOIP Pillar – Improving Health & Wellbeing

∴ Fauldhouse and Breich Valley – Action Plan

Change/ Outcome/ Objective	Action	Lead Agency (bold) Other partners	Where does action area come from	Links
<p>Community resilience around climate change is increased in the relevant Fauldhouse and Breich Valley areas</p>	<p>Educate communities on the effects of climate change on biodiversity and increase related volunteering and community resilience.</p> <p>Raise awareness of:</p> <ol style="list-style-type: none"> 1. positive action around reducing emissions and circular economy; and 2. actions that contribute to climate change mitigation and adaptation that can be taken in the relevant areas. <p>Collaborate to develop briefings for key community organisations on climate issues, develop resources communities can access and create increased volunteering opportunities.</p> <p>Support local organisations, groups and residents to identify what can be done locally and deliver projects linked.</p> <p>Carry out local engagement utilising resources designed around climate action.</p> <p>Raise awareness, reduce stigma and promote the use of reusable period products within Fauldhouse and Breich Valley.</p>	<p>Community Councils</p> <p>Voluntary Sector Gateway West Lothian (VSGWL)</p> <p>Nature Scotland</p> <p>West Lothian College</p> <p>Skills Development Scotland</p> <p>Job Centre Plus</p> <p>Local Schools</p> <p>Community Wealth Building Team (Regeneration)</p> <p>West Lothian Climate Action Network (WLCAN)</p>	<p>LOIP Pillar Working Group</p>	<p>LOIP Pillar: Creating Net Zero Carbon Communities</p>

∴ Fauldhouse and Breich Valley – Action Plan

Change/ Outcome/ Objective	Action	Lead Agency (bold) Other partners	Where does action area come from	Links
Delivery of employability interventions in Fauldhouse and Breich Valley aimed at providing access to opportunities	Target support and interventions to those who are unemployed or underemployed. Integration of employability support into partner activity.	Economic Development (WLC) Education Services (WLC) West Lothian College Skills Development Scotland Department of Work and Pensions	LOIP Pillar Working Group	LOIP Pillar: Creating Skills and Jobs
Tackling the determinants of poverty.	Integrate anti-poverty work in the area, support communities to engage with available services and provide support to deliver the Anti-Poverty Action Plan	Tackling Poverty Taskforce Third Sector Community Wealth Building Team (Regeneration) Communities	Tackling Poverty Strategy Local community engagement	Tackling Poverty Strategy
Increased community response and support for homelessness	Reduce the stigma of homelessness by raising community awareness through local engagement sessions Develop local Third Sector role to support tenancy sustainment and integration in communities. Identify and involve wider partners with front line staff who engage with the public to share the housing options message.	Housing, Customer & Building Services Community Regeneration Health and Social Care Partnership Local Third Sector organisations	LOIP Pillar Working Group	LOIP Pillar: Creating Affordable and Sustainable Housing

📍 Fauldhouse and Breich Valley – Action Plan

Key Regeneration Areas Actions (Addiewell, Fauldhouse, Polbeth and Stoneyburn)

Change/ Outcome/ Objective	Action	Lead Agency (bold) Other partners	Where does action area come from	Links
Improved access to key services that support people's well-being and employability	Continuation of the delivery of key community services locally aligned to community need Identification of services required locally, aligned to community needs and ensuring local provision where available	Ward Key Community Groups and Community Development Trusts Community Wealth Building Community Woods and Garden, Polbeth and West Calder	Community Need Community Wealth Building Health and Care Partnership	LOIP Pillar – Improving Health & Wellbeing LOIP Pillar – Creating Skills and Jobs
Additional opportunities for learning and training are available for local residents	Explore the viability and establish suitable spaces to deliver education and skills training within the ward	Community Development Trusts and key community Groups Adult Learning Access2employment (A2E)	Community engagement Partner engagement	LOIP – Creating Skills and Jobs
Delivery of employability interventions in Fauldhouse and The Breich Valley aimed at providing access to opportunities	Target support and interventions to those who are unemployed or underemployed. Establish the provision of outreach and alignment of employability support with community activity within Fauldhouse, Stoneyburn, Addiewell and Polbeth.	Employability & Economic Development Service Adult Learning/ Access2Employment Fauldhouse and Breich Valley Community Development Trust (F&BVCDT) Stoneyburn and Bents Future Vision Group (SBFVG) Polbeth HUB Addiewell Pitstop	Community engagement	West Lothian Tackling Poverty Strategy 2023-2028 LOIP: Creating skills and jobs`

∴ Fauldhouse and Breich Valley – Action Plan

Change/ Outcome/ Objective	Action	Lead Agency (bold) Other partners	Where does action area come from	Links
Fauldhouse and The Breich Valley is more resilient to the impacts of climate change	Development and integration of climate actions and interventions throughout community and local service delivery across the key regeneration areas	Community Wealth Building Local structures Climate Change lead – West Lothian Council West Lothian Climate Action Network	Local Engagement	LOIP Pillar – Creating Skills and Jobs West Lothian CLD PlanAdult Learning Strategy Scotland 2022-27
Explore options for improved community transportation links within the ward including community transport and cycling/ walking routes	Provide potential options to improve transport link within the ward and beyond. Explore potential for bike lending libraries	Community Wealth Building Community Development Trusts / Key community organisations	Community Need Local Engagement	LOIP Pillar – Improving Health & Wellbeing LOIP Pillar: Creating Net Zero Carbon Communities
Current Community garden projects across the key regeneration areas are supported and developed in Addiewell and Polbeth	Develop activity and volunteering within the community gardens, and its links to the wider community Reduce food miles and support local growers. Reduce food waste by improving the value people attach to food. Improved health by eating more fresh fruit and veg.	Community Wealth Building Community Woods and Garden, Polbeth and West Calder Addiewell, Loganlea and Breich Community Council Schools	Community Need Local Engagement	LOIP Pillar – Health & Wellbeing

∴ Fauldhouse and Breich Valley – Action Plan

Change/ Outcome/ Objective	Action	Lead Agency (bold) Other partners	Where does action area come from	Links
Explore potential for community growing/garden projects in Fauldhouse and Stoneyburn	Community growing/garden projects are investigated and delivered where possible.	Community Development Trusts Key Community Groups West Lothian Food Growing Network	Community engagement Statistics	West Lothian Anti-Poverty Strategy LOIP Pillar – Creating Net-Zero Carbon Communities
Lower cost provision of food is available	Continued development of the food provision within the key areas Connect community growing projects with food banks/ community shops via West Lothian Food Growing Network.	Community Wealth Building Fauldhouse ASB response group	ASB Statistics Community Engagement	Community Safety Board
Address issues of anti-social behaviour (ASB) that arise with a focus on Fauldhouse and other communities as required	Explore delivery and sustainability of diversionary activities Deliver pilot E-sports project within Fauldhouse and Polbeth Implement awareness raising campaigns on how to tackle/report ASB	Community Wealth Building Community Development Trusts / Key Community organisations FCYT, Polbeth HUB and key Community organisations	Community Need Local Engagement	LOIP Pillar – Improving Health & Wellbeing LOIP Pillar: Creating Net Zero Carbon Communities

∴ Fauldhouse and Breich Valley – Action Plan

Change/ Outcome/ Objective	Action	Lead Agency (bold) Other partners	Where does action area come from	Links
Improving sporting facilities/ opportunities across the ward	<p>Explore potential for a Community Sports HUB within Fauldhouse</p> <p>Map provision across the ward to identify gaps and minimise duplication</p> <p>Explore creation of better-quality sports pitches/courts within Addiewell, Polbeth and Stoneyburn</p> <p>Explore options to increase access for the community to sport provision and opportunities</p>	<p>Community Wealth Building</p> <p>Community Sport Team</p> <p>Sports Clubs</p> <p>Key Community Organisations</p>	<p>Community Engagement</p> <p>Partners</p>	LOIP Pillar – Health & Wellbeing
Improve the built-up environment and cleanliness of the community	<p>Explore options for tackling litter and dog fouling issues</p> <p>Local activity is developed to improve the environment in Addiewell, Fauldhouse, Polbeth and Stoneyburn</p>	<p>Key Community Groups</p> <p>Partner Agencies including Housing</p> <p>West Lothian Litter Pickers</p>	<p>Partners</p> <p>Community Engagement</p>	LOIP Pillar – Health & Wellbeing
Existing services being delivered to meet community needs are sustained.	Existing projects are supported to work in partnership, develop services in response to changing needs and obtain the required funding.	<p>Community Wealth Building</p> <p>Key community organisations</p> <p>Local regeneration groups</p>	Existing provision and funds supporting these communities	

∴ Fauldhouse and Breich Valley – Action Plan

Change/ Outcome/ Objective	Action	Lead Agency (bold) Other partners	Where does action area come from	Links
<p>Increased partnership working between services and the community.</p> <p>Improved communication between services and the community.</p>	Facilitation of locality planning steering groups.	Community Wealth Building Team	Community Engagement Partner organisations and services	Community Empowerment (Scotland Act) 2015
Community capacity is sufficient to enable the community's voices to be heard and local projects which respond to community need to be delivered	<p>Greater participation in local democracy</p> <p>Increase confidence and skills among local people</p> <p>More people volunteering in their communities</p> <p>Increase satisfaction with quality of life in Addiewell, Fauldhouse, Polbeth and Stoneyburn</p>	<p>Community Wealth Building</p> <p>Customer and Community Services</p> <p>Adult Learning</p> <p>Access2Employment</p>	Community Engagement Partners	Community Empowerment (Scotland) Act 2015

FAULDHOUSE AND BREICH VALLEY LOCALITY PLAN

2023-2026

