

# MID CALDER LOCAL PLACE PLAN

---

2024

Prepared by Mid Calder Community Council

## Contents

OVERVIEW .....	4
Section 1: Introduction .....	5
About Mid Calder .....	5
Map of Mid Calder .....	6
About this Local Place Plan .....	7
Section 2: Place Planning in Mid Calder .....	9
What we did .....	9
Our Vision .....	13
Opportunities and Challenges .....	13
Desired Outcomes .....	14
Section 3: Detailed Action Plans .....	15
Outcome 1: Safer pedestrian routes and slower traffic in Mid Calder .....	15
Outcome 2: Wildlife and nature are protected by maintaining Mid Calder's green and blue spaces. ....	22
Outcome 3: Mid Calder Heritage is preserved and accessible. ....	27
Outcome 4: Day-to-day services and facilities are in easy reach of home for everyone in Mid Calder .....	32
Annexe 1 : Registration Checklist .....	39
Annexe 2 : Submission Statement .....	40
Annexe 3: Information Notice .....	43
Annexe 4: Identified actions for Mid Calder residents .....	44
Annexe 5: Mid Calder Community Council Constitution .....	45

## List of Figures

Figure 1: Map of Mid Calder and boundaries of this place plan. ....	6
Figure 2: Local Place Plan Themes. Source: Our Place .....	7
Figure 3: Mid Calder Place Plan Residents Consultation and Workshop (February 2024). .	9
Figure 4: Mid Calder Place Plan Online Consultation "Your Priorities" platform. ....	10
Figure 5: Word cloud extract from Mid Calder Primary School Consultation .....	11
Figure 6: Top 10 community priorities (indicative) .....	12
Figure 7: Overview map of proposed actions for outcome 1: Improved pedestrian safety and slower traffic in Mid Calder .....	16
Figure 8: Action 1.5(b) Combfoot - showing proximity of 30mph sign to children's playpark and care home.....	20
Figure 9: Action 1.5(c) Moving the 30mph zone. ....	20
Figure 10: Current parking area along Market Street / west of Avenue Park (left) with an alternative option (right).....	20
Figure 11: New footpath from B7015 adjacent to Avenue Park West Playspace.....	21
Figure 12: Overview map of proposed actions for outcome 2: Wildlife and nature is protected. ....	23
Figure 13: Overview map of proposed actions for outcome 3: Mid Calder Heritage is preserved and accessible. ....	28
Figure 14: Mid Calder Market Square. Source and Photo Credit: Scottish Shale .....	29
Figure 15: Mid Calder North Bridge 1929. Source and Photo Credit: Scottish Shale .....	29
Figure 16: Overview map of proposed actions for outcome 4: Day-to-day services and facilities are in easy reach of home for everyone in Mid Calder.....	34

# MID CALDER LOCAL PLACE PLAN 2024

## OVERVIEW

Mid Calder's unique built and natural heritage, combined with its strong community spirit and strategic location, provides significant opportunities for spatial development in line with the priorities of NPF4.

This plan was prepared by the Mid Calder Community Council with support and input from our local community. The proposals presented here are synthesized from face-to-face community workshops, an online platform, and consultations with Mid Calder Primary School pupils. What has emerged through this consultation process is a clear vision for Mid Calder as a vibrant community that celebrates its unique heritage and embraces sustainable growth.

- 33** Unique ideas proposed
- 70** Responses from Mid Calder Primary School
- 4** Priority outcomes identified
- 24** Detailed actions proposed

Mid Calder residents would like to see West Lothian's Local Development Plan deliver the following outcomes:

- 1** Safer pedestrian routes and slower traffic in Mid Calder
- 2** Wildlife and nature are protected by maintaining Mid Calder's green and blue spaces
- 3** Mid Calder heritage is preserved and accessible to all
- 4** Day-to-day services and facilities are in easy reach of home for everyone in Mid Calder

# Section 1: Introduction

## About Mid Calder

Mid Calder is a conservation village located in Ward 5 (East Livingston and East Calder) of West Lothian. It lies adjacent to Livingston, the River Almond, Calderwood and East Calder.

**3212** Residents

**22** Listed buildings

**1** Ancient woodland and Site of Special Scientific Interest

**2.2** Miles to the nearest railway station

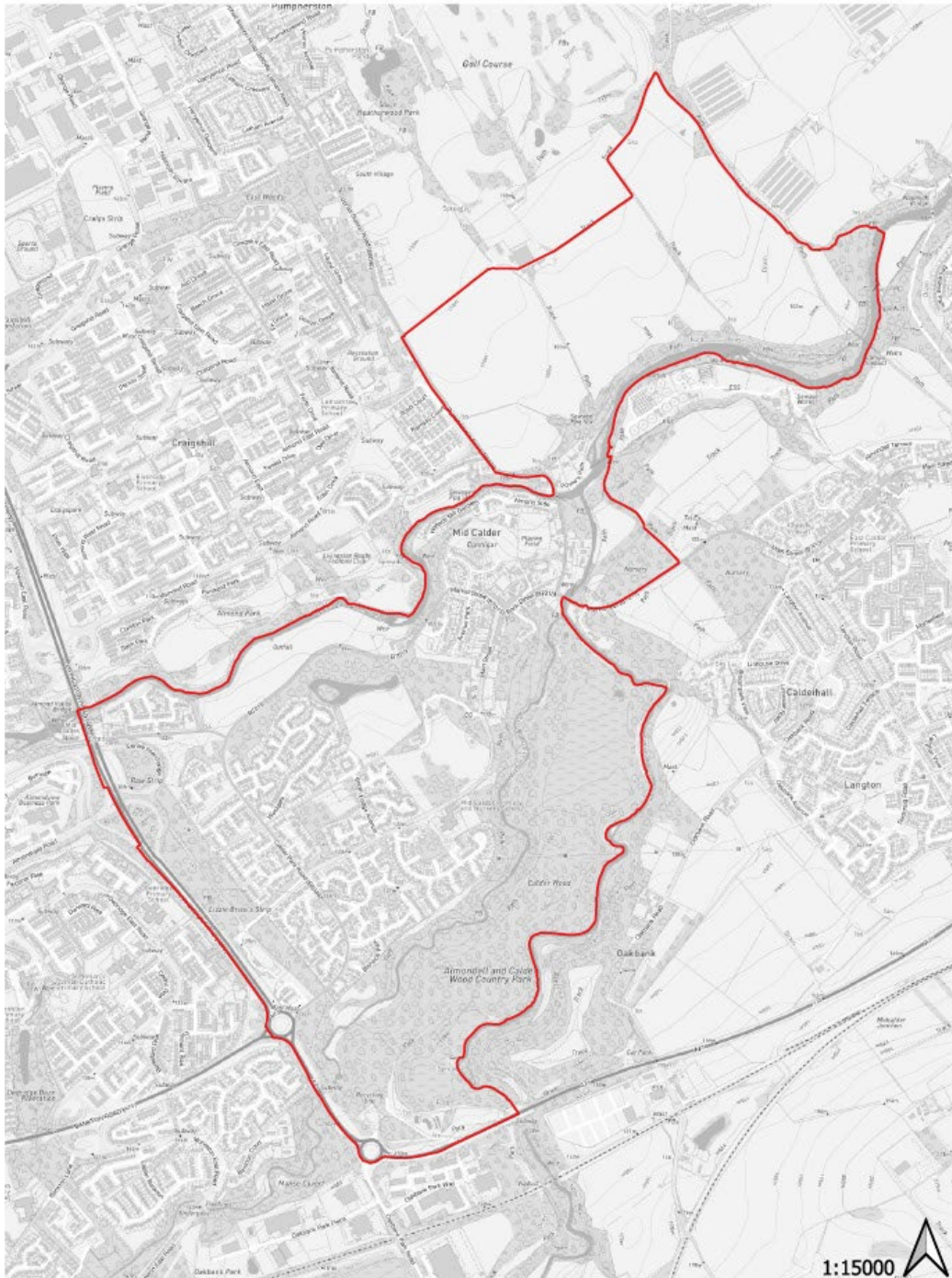
Mid Calder's origins date back to the 11th century and it retains twenty-two listed buildings, including Calder House, a 16th-17th century mansion and the seat of Lord Torphichen Barony of Calder, and Mid Calder Kirk (c. 1530-c. 1550). Rich in natural assets, Mid Calder is situated between Calderwood, Linhouse Water, and the River Almond, featuring woodland corridors that attract a variety of wildlife. It borders Almondell and Calderwood Country Park, which includes Calderwood's ancient woodland, the largest in West Lothian and a designated Site of Special Scientific Interest (SSSI).

According to the 2022 census, 63.3% of Mid Calder's residents are aged 18-65, 15.7% are under 18, and 21% are over 65. Mid Calder has a primary school and nursery, a church, a community hall, a care home, a pharmacy, and three public houses. The closest GP, library, post office, and all-weather games pitch are in East Calder, one mile away. Secondary education is accessed outside the ward, and the nearest swimming pool is in Bathgate. The closest railway stations are Livingston South (2.2 miles) and Kirknewton (2.2 miles). Mid Calder is served by two Lothian Country buses (X27/X28) on the Edinburgh-Bathgate route, and the National Cycling Route 75 runs along its northern boundary. Neighbouring Livingston provides a broad range of shops, supermarkets, sports, and leisure facilities.

Mid Calder's natural and built heritage provides a clear mandate to celebrate its history and culture, making it a potential beacon for culture and tourism in the region. Its proximity to both natural and established travel corridors offers an excellent location. The predominantly active age community, with strong social cohesion and clear priorities, provides significant opportunities for spatial development in line with the priorities of NPF4.

## Map of Mid Calder

Figure 1 presents a map of Mid Calder and the boundaries that were adopted in the development of this place plan.



Mid Calder Community Council

© Crown copyright and database rights 2021 OS100037194. You are permitted to use this data solely to enable you to respond to, or interact with, the organisation that provided you with the data. You are not permitted to copy, sub-licence, distribute or sell any of this data to third parties in any form.

*Figure 1: Map of Mid Calder and boundaries of this place plan.*

## About this Local Place Plan

Local Place Plans were introduced by the Planning (Scotland) Act 2019, which grants communities the right to produce their own plans within the new Scottish planning system. Local Place Plans encompass the community's proposals for land development and usage, offering an avenue for communities to contribute ideas and proposals to the planning process. This Local Place Plan has regard to the current [West Lothian LDP \(LDP1\)](#) and [Fourth National Planning Framework for Scotland \(NPF4\)](#).



Figure 2: Local Place Plan Themes. Source: Our Place<sup>1</sup>

As required by the relevant legislation, the preparation of this Local Place Plan includes reference to:

- West Lothian Council's current Local Development Plan
- The National Planning Framework (NPF4), the content of which is reflected particularly in this Local Place Plan's proposals for
  - Sustainable places, particularly around protecting our natural environment, green belts, biodiversity, sustainable transport
  - liveable places, particularly local living and 20-minute neighbourhoods, blue and green infrastructure, play recreation and sport, and flood risk and water management, improving town centre and historic environments, community wealth building and design/quality/place.
  - Productive places, particularly tourism, culture and local neighbourhood centres

We believe the Mid Calder Local Place Plan 2024 aligns with these policies and development proposals. Furthermore, we believe that the proposals outlined in this local plan will strengthen the next West Lothian Local Development Plan.

This Local Place Plan has been prepared by the Mid Calder Community Council entirely on a voluntary basis, without external support or funding. None of the team are planning

<sup>1</sup> <https://www.ourplace.scot/home/local-place-plans>

professionals. This report has been compiled with our best efforts to represent the interests of our community and future generations. We acknowledge that local councils are navigating a challenging financial landscape but urge that these requests are given due consideration and weighting in decisions.

The plan is presented in three sections: the first section provides an introduction and an overview of Mid Calder in context; the second section details the local place plan process, including our actions and the high-level outcomes and priorities; the third section presents detailed action plans for each of the four priority outcomes. The fourth section contains supporting material.



## Section 2: Place Planning in Mid Calder

### What we did

This place plan was prepared in consultation with the community. We offered multiple avenues for engagement - ideas were generated and validated through a face-to-face workshop and a digital civic engagement platform. Information posters were posted in the village, on noticeboards and also shared via social media groups. We also ran a dedicated consultation with Mid Calder Primary School

### IN PERSON

Mid Calder Community Council organised a planning workshop to take place in February 2024. This took place in Mid Calder Institute Hall and comprised of an introduction to the Local Place Plan project and themes; followed by a workshop where residents discussed what their priorities were the challenges they faced. The second part of the workshop residents identified and marked up maps with their proposed ideas. The maps were accessed using the Parish Online Community Mapping Tool and printed out at different scales.



*Figure 3: Mid Calder Place Plan Residents Consultation and Workshop (February 2024)*

### ONLINE

To complement the face-to-face workshops, the consultation process also used a digital engagement platform. Mid Calder Community Council uses the “Your Priorities” site for digital civic engagement. Your Priorities is purpose-designed and free to use community engagement platform. It offers idea generation and prioritisation in a social networking

platform. Mid Calder Community Council first used this platform in 2022 to collect ideas for a Town Fund, which led to the funding allocation for a Heritage Trail. We used it again to gather ideas for the Mid Calder Local Place Plan 2024.

A dedicated sub-page was set up on Mid Calder's Your Priorities page for the local place plan, open between 10<sup>th</sup> February and 15 March 2024. Residents are able to add new ideas, or vote or add comments to existing ideas. In total, 33 ideas were added. The site can be accessed [here: https://yrpri.org/group/30695](https://yrpri.org/group/30695). (See Figure 4)

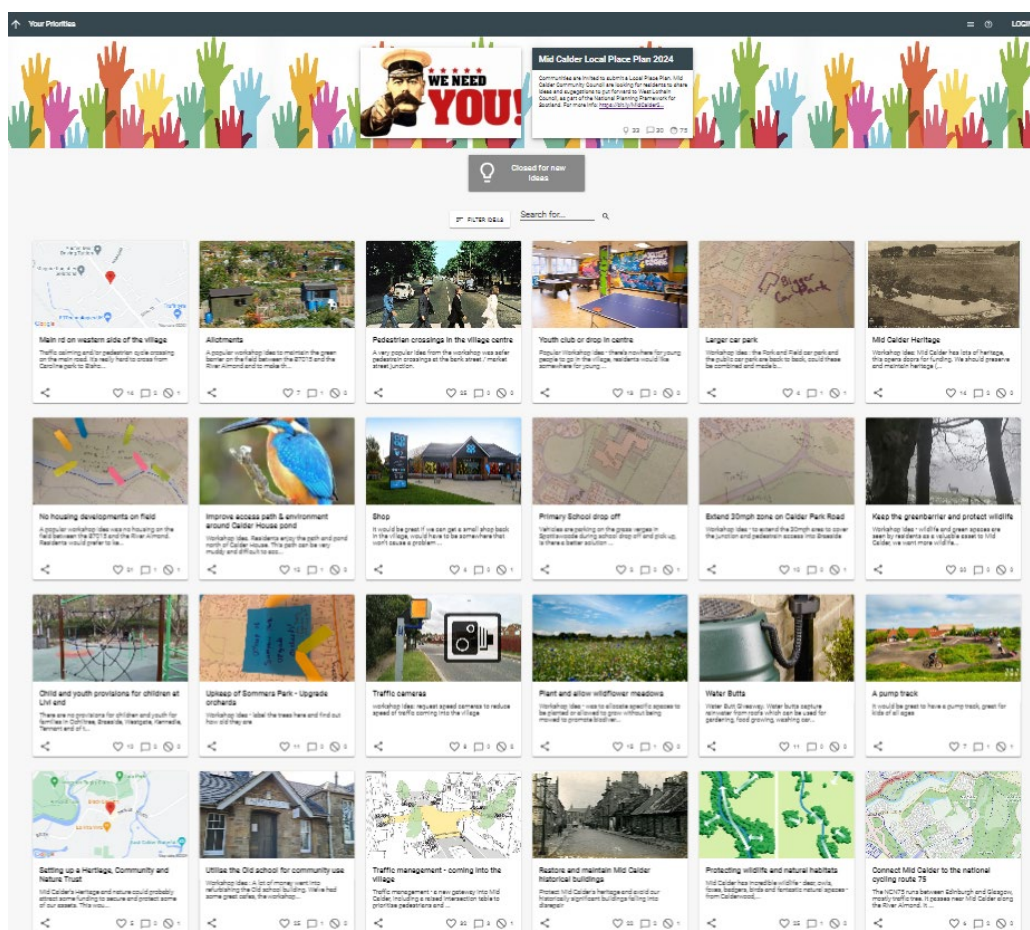


Figure 4: Mid Calder Place Plan Online Consultation "Your Priorities" platform.

## THEME IDENTIFICATION

The ideas generated via the workshop and Your Priorities site demonstrated clear priority areas for development for Mid Calder residents, notably:

- Traffic management and safer pedestrian routes
- Mid Calder Heritage
- Environment and nature
- Better services and facilities

Idea's were grouped around these themes which has informed the outcomes of this plan.

## TARGETTED CONSULTATION - FUTURE GENERATIONS

The views of our future generation were also sought through a targeted consultation with Mid Calder Primary School around the emergent core themes. A survey was prepared, in partnership with the Head Teacher, for Mid Calder Primary School children to submit their views and rate how important each of these themes were to them.

In total 70 responses were provided by Mid Calder Primary School. The older classes submitted individuals' responses whereas the infants submitted a collective contribution. The form can be viewed here: <https://forms.office.com/e/PuzQW7FB3p?origin=IprLink>

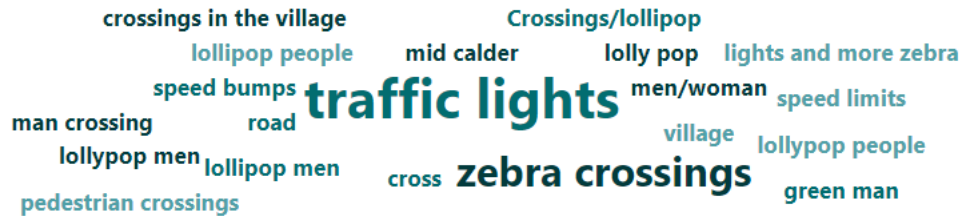


Figure 5: Word cloud extract from Mid Calder Primary School Consultation

## CONSOLIDATION AND FEEDBACK

To produce the place plan, ideas were collated and voted upon and those that met the criteria (specific, realistic, do-able and align to the priority thematic areas) are included in this document. The plan has also been shared online.

## A SNAPSHOT OF OUR TOP-10 PRIORITIES

Indicative community priorities for action, ranked by most “liked”, are shown in Figure 6. Note that these priorities are expressed in the residents' own words and, while they may be articulated slightly differently in the action plan, their core messages remain intact.

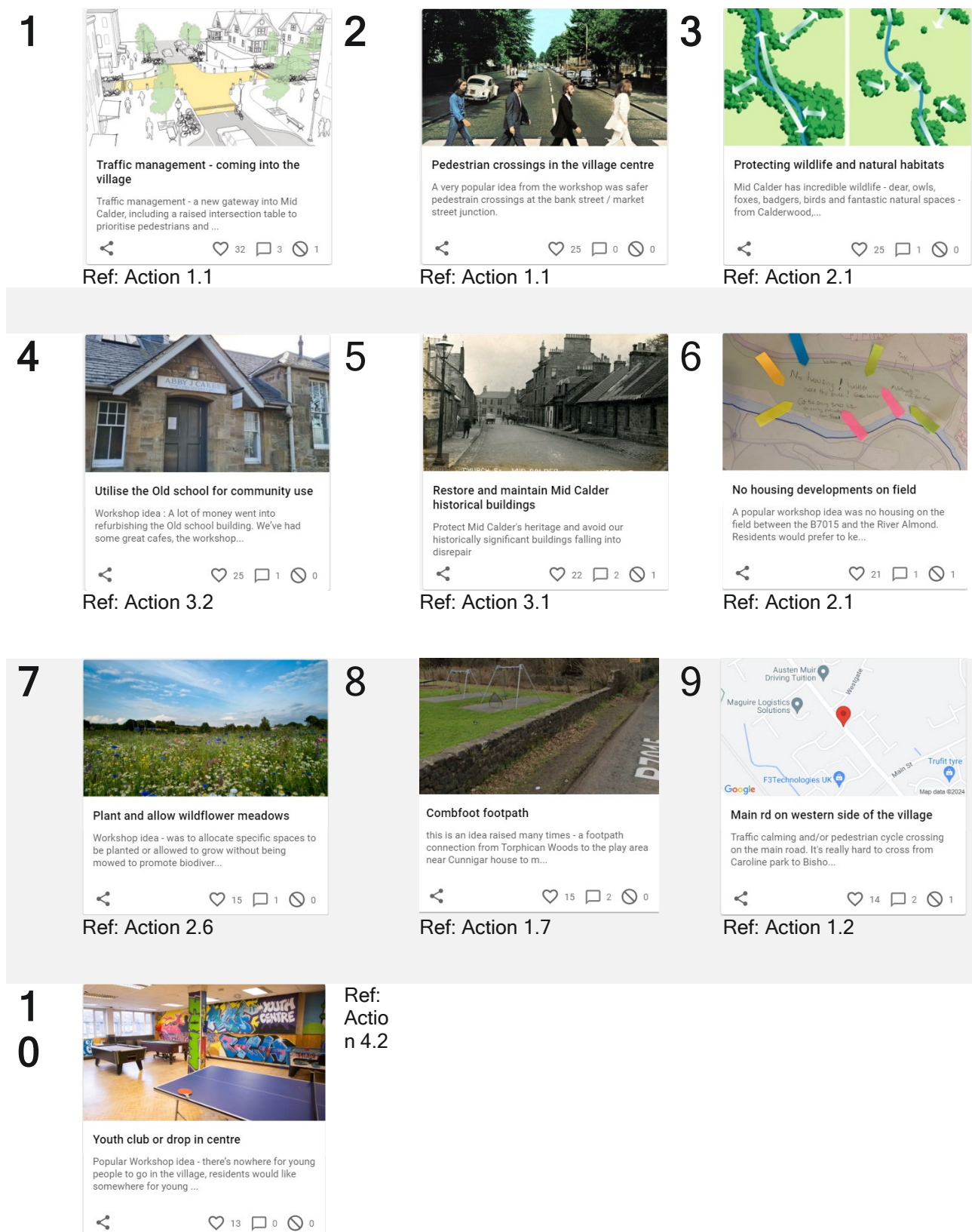


Figure 6: Top 10 community priorities (indicative)

## Our Vision

What has emerged through this consultation process is a clear vision for Mid Calder as a vibrant community that celebrates its unique heritage and embraces sustainable growth, where nature and people coexist in harmony.

We aim to preserve the rich heritage that defines our community's identity both our historical landmarks and traditions are at the heart of who we are, as well as the natural heritage of ancient woodland and ecosystems. We are committed to maintaining these legacies for future generations, where residents and wildlife can thrive.

We value our residents and the sense of belonging that comes with being part of Mid Calder. Our green spaces, wildlife, and natural beauty are central to our community's soul, providing spaces for recreation and healthy living. We believe in fostering a community where everyone feels valued, respected, and included.

Our vision includes creating safer pedestrian and cycling routes and encourage more sustainable modes of transportation and promote healthier lifestyles. We seek to develop more places for people to meet and children to play, strengthening the bonds within our community. By retaining our heritage and green spaces while improving our infrastructure and services, we will create a more liveable and sustainable community.

## Opportunities and Challenges

Mid Calder unique heritage, combined with its strong community spirit and location, affords it great opportunities to deliver spatial development against the priorities of NPF4.

Mid Calder natural assets of ancient woodlands, green and blue corridors and abundant wildlife provide a valuable opportunity to protect biodiversity and reduce greenhouse gas emissions. This needs to be protected. Our historical assets and buildings need to be maintained and used wisely. Mid Calder's location adjacent to many of West Lothian's core active travel routes and close to amenities has great potential for it to be an active travel success story.

Two core challenges emerged during the consultation. The first challenge is that, although Mid Calder's location is advantageous for active travel, the lack of safe and accessible routes means these assets and networks are not used to their full potential. Relatively small investments to improve active travel, safer pedestrian routes, and access to green spaces and core path networks would significantly enhance access to the rich network surrounding Mid Calder.

The second challenge is that, due to economies of scale and the proximity of larger neighbours Livingston and East Calder, services and facilities are often concentrated in these larger agglomerations. Examples include health centres, food shops, all-weather sports pitches, and post offices. This consultation has highlighted clear priorities for which facilities and services are desired within the community boundaries—specifically, community halls and spaces where the community can meet, youth clubs, and play spaces were prioritized by residents. A local health centre and access to regular bus services are

important lifelines for residents. Having these services and facilities locally accessible is particularly important for our youth and elderly community members, who are less able to travel independently or longer distances.

## Desired Outcomes

The Mid Calder Local Place Plan 2024 consultation has revealed the following desired outcomes from West Lothian's Local Development Planning process:

- 1 Safer pedestrian routes and slower traffic in Mid Calder**
- 2 Wildlife and nature are protected by maintaining Mid Calder's green and blue spaces**
- 3 Mid Calder heritage is preserved and accessible to all**
- 4 Day-to-day services and facilities are in easy reach of home for everyone in Mid Calder**



### What our younger people say

*"There should be a crossing for children to cross to go to the park and cross to go to friends' houses. In the village there should be some more crossings, so it is safer to cross and get to the village from different places around Mid Calder."*

*"Leave some space for woods and wildlife to enjoy and keep the wildlife safe and healthy".*

*"Add signs saying come visit Mid Calder with information about its past and history"*

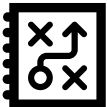
*"More shops and play areas"*

## Section 3: Detailed Action Plans

### Outcome 1: Safer pedestrian routes and slower traffic in Mid Calder



**Description:** Traffic management measures and safer pedestrian routes have emerged as the highest priority outcome for Mid Calder residents. There are several locations where residents fear crossing the road or children do not have safe routes to school. Children's access to playparks is restricted due to the lack of safe places to cross the roads. The consultation also revealed that the nearest access point to the NCN75 heading towards Edinburgh is not deemed accessible Mid Calder for adaptive cyclists. As utmost priority residents are seeking safe pedestrian crossings at key locations to enable safer routes from home to school and to local shops and amenities. The community aspires to connect to wider active travel infrastructure of West Lothian that lies nearby but cannot necessarily be accessed safely. Mid Calder is seeking to be a walking and cycling friendly town that is joined up and accessible to the active travel infrastructure nearby, particularly to our children, disabled and older people.



**How this aligns to wider planning priorities:** West Lothian's LDP1 (Policy Tran3) and West Lothian's Active Travel Plan sets out a framework to facilitate active travel for everyday and functional journeys. It presents strategic priorities for active travel infrastructure improvements Green Network routes, Scottish Natural Heritage and the National Cycle Route Network. Promoting active travel also supports residents to live and work in a sustainable, nature rich, net zero carbon community.



**What our younger people say:** 75% of Mid Calder Primary School respondents said that having safer pedestrian routes and slower traffic in Mid Calder is "important." Specifically, they are asking for:

*"Zebra crossings in the village and on the route to school"*

*"More traffic lights, in the village it is harder to look round corners".*

*"Slow down the cars on the road because they go a bit fast."*

*"There should be a crossing for children to cross to go to the park and cross to go to friends' houses. In the village there should be some more crossings, so it is safer to cross and get to the village from different places around Mid Calder."*



## Map of and action list to achieve outcome 1: Safer pedestrian routes and slower traffic in Mid Calder



Figure 7: Overview map of proposed actions for outcome 1: Improved pedestrian safety and slower traffic in Mid Calder

### Outcome 1: Summary of actions for safer pedestrian routes and slower traffic

- Safe pedestrian crossing(s) and traffic calming measures at Bank St / Market Street (1.1), Calder Park Road (1.2 and 1.4) and Cunnigar House (1.3)
- Slow and control traffic at entry points to village (1.5, 3 locations)
- Increase parking capacity (to offset parking spaces lost due from safer crossings at Bank Street (1.6)
- Creating an off-road path and safer access route Avenue Park West Playpark (1.7)
- A community-based active travel network plan (1.8)
- High quality walking and cycling route along the Mid Calder Heritage Trail (1.9)



## Action Plan for Outcome 1

Ref	Title	Context	Proposed Action	Stakeholders
1.1	<b>Safe pedestrian crossing(s) and traffic calming measures</b> at the intersection of Bank Street and Market Street	This is a top priority for residents. This location is the centre of Mid Calder, where many of Mid Calder's shops and amenities are located, including a toddler group. Two main roads meet in a T-junction, at a bend in the road. There is no obvious location to cross the road safely but being in the centre of amenities residents need to cross here. The reduced visibility around the bend means children and the elderly pedestrians are particularly vulnerable at this location.	To install safe pedestrian crossing(s) and traffic calming measures at the intersection of Bank Street and Market Street to enable safer routes to school and local amenities.	West Lothian Council
1.2	<b>Safe pedestrian crossing(s) and traffic calming measures</b> on Calder Park Road between Ochiltree Crescent and Westgate	There is a well-used pedestrian path and a bus stop (also used as a school bus stop) that crosses Calder Park Road between Ochiltree Crescent and Westgate. This route is well used by bikes and pedestrians travelling between home, school, Mid Calder's amenities and to access Livingston's amenities <sup>2</sup> .  We note the road is wide enough to accommodate traffic islands and/or traffic calming measures.	Create a crossing(s) and traffic calming measures on Calder Park Road between Ochiltree Crescent and Westgate where the pedestrian path users have the right of way over the road users.  A safer crossing here would serve school children well and provide an important connection to the wider active travel network of West Lothian to enable safer routes to school and local amenities.	West Lothian Council
1.3	<b>Safe pedestrian crossing(s) and/or traffic calming measures at Cunnigar House</b> to enable safer routes to school and local amenities.	Cars travel West to East along the B7015 and fail slow to the 30mph speed limit as they enter the village near Cunnigar House Car Home. This is problematic notably given the proximity of a Care Home, a children's playpark and a pedestrian path that exits woodlands at this area immediately inside the 30mph zone and a bend in the road that prevents pedestrians seeing cars coming (see figure 8).	To install safe pedestrian crossing(s) and traffic calming measures near Cunnigar house and Avenue Park West Playpark	West Lothian Council
1.4	<b>Safe pedestrian crossing(s) and/or traffic calming measures</b> on Calder Park Road near Caroline Park bus stop to enable safer	Cars entering the village from Lizzi Brice roundabout are often travelling in excess of 30mph speed limit at this location. Pairing safer road crossing and/or speed reduction measures with the existing bus stop at this location would provide a safe pedestrian route for many Mid Calder residents to access Livingston's amenities	Safe pedestrian crossing(s) and traffic calming measures on Calder Park Road near Caroline Park bus stop to enable safer routes to school and local amenities.	West Lothian Council

<sup>2</sup> We note there has been an assessment of traffic and pedestrian volumes at this location previously. The community would suggest volumes observed were likely affected by reduced traffic during the COVID period. We also note that people cross the road at various locations on this road, providing a clear place to cross would likely direct pedestrian numbers.

	routes to school and local amenities.	via active travel. We note the road is wide enough to accommodate traffic islands and/or traffic calming measures.		
1.5	<b>Slow and control traffic at entry points to the village</b> to enable safer routes to school and local amenities.	Cars entering the village often fail slow to the 30mph speed limit as they enter the village. This relates to 3 main locations: a) Bank Street as cars enter the village from East Calder b) Calder Park Road junction of B8046 and B7015. The footpath on the Calder House roadside ends just outside the 30mph zone, forcing pedestrians to cross the road on the bend in a 40mph road. c) Calder Park Road from Lizzy Brice Roundabout	Proposed actions a) Physical and behavioural traffic control measures at entrance to village. At this location, residents suggested forming a gateway into Mid Calder, including a raised intersection table to prioritise pedestrians and reduce traffic speed into the village, including a dedicated point for cyclists and pedestrians to cross safely (see action 1.1) b) Extend the 30mph zone by approx. 50 metres along B7015 such that the footpath crossing falls within a slower speed zone (See figure 9) Residents suggested traffic cameras. c) Physical and behavioural traffic control measures at entrance to village. Residents suggested forming a gateway into Mid Calder, including a raised intersection table to prioritise pedestrians and reduce traffic speed into the village.	West Lothian Council
1.6	<b>Increase parking capacity</b> along Market Street/west of Avenue Park	Getting pedestrian crossings at the Bank St / Market St intersection (1.1) would mean losing valuable parking spaces. Residents explored options where additional parking spaces could be created. One potentially promising location is where there are existing parallel parking spaces along Market Street/west of Avenue Park which, with some minor modifications, could provide additional capacity.	Adapt the parking area along Market Street/west of Avenue Park, potentially moving to perpendicular/angled bays or minor modifications to the layout with a view to increase parking capacity (see figure 10)	West Lothian Council
1.7	<b>Creating an off-road path</b> and safer access route Avenue Park West Playpark	Residents walking between the west end of the village to Avenue Park West Playpark, care home and houses of Avenue Park West and village centre amenities use the woodland paths of Calder Park House. The footpath emerges onto the B7015 where pedestrians are faced with no footpath to the village amenities. Their options are 1) crossing the road to a pavement on the other side but with poor visibility close to a bend with cars exceeding 30mph or 2) walking along a grass verge and the road to pavement that starts 50 metres further	Create a safe access footpath that perpendicular to the B7015 the inner boundary of Avenue Park West Playpark. This would be diverting pedestrians safely away from the B7015 and towards the existing footpaths connecting to Avenue Park and Avenue Park West village amenities (see figure 11).	West Lothian Council

		along. Neither option is safe and is especially difficult for younger and vulnerable populations.		
1.8	<b>A community-based active travel network plan</b>	<p>Mid Calder lies adjacent to some of the excellent walking and cycling routes of West Lothian and within 2 miles of Livingston centre and rail stations. The potential for Mid Calder to be a beacon of active travel is significant. However, due to road boundaries without well designated pedestrian crossings there aren't safe access routes to these amenities.</p> <p>Our consultation revealed that the closest access point to the NCN75 towards Edinburgh is not deemed accessible from Mid Calder for adaptive cyclists.</p> <p>Mid Calder residents especially our younger and more vulnerable populations, do not feel confident, safe or incentivised to access West Lothian's amenities via active travel routes.</p>	<p>Develop a community-based active travel network plan to promote active travel within and to Mid Calder, connecting Mid Calder to the wider active travel infrastructure.</p> <p>This would include but not be limited to, implementing traffic control measures throughout the village re-prioritising road space to support high quality walking and cycling connections and a formal connection to the NCN75 cycling route, ensuring access for adaptive and non-standard cycles</p>	<p>West Lothian Council</p> <p>Southeast of Scotland Transport Partnership</p> <p>Third sector organisations promoting active travel e.g. Sustrans, Love to Ride</p>
1.9	<b>High quality walking and cycling route along the Mid Calder Heritage Trail</b>	<p>Mid Calder was awarded £10,000 by the WLC Town Centre Fund for a Heritage Trail around the village, celebrating our history and heritage, this is currently under development.</p> <p>This route covers several of the locations on the map and therefore encounters the same issues of traffic and lack of safe pedestrian crossings. Mid Calder Community Council would like to promote this as pedestrian route and avoid attracting any additional cars and therefore looking to ensure visitors have safe access routes to and along the heritage trail.</p>	<p>Develop a high-quality walking and cycling route along the Mid Calder Heritage Trail (under development with Town Funding) connecting to the wider active travel infrastructure.</p> <p>For more information about the Heritage Trail route, please contact Mid Calder Community Council.</p>	<p>West Lothian Council</p> <p>Mid Calder Community Council</p> <p>Historic Environment Scotland</p>

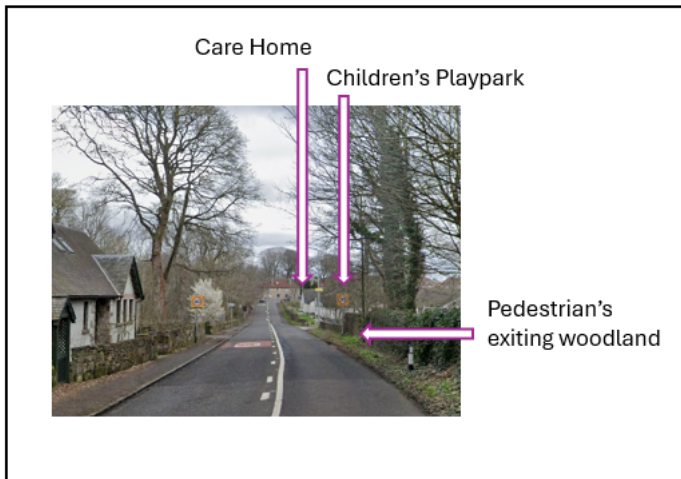


Figure 8: Action 1.5(b) Combfoot - showing proximity of 30mph sign to children's playpark and care home.



Figure 9: Action 1.5(c) Moving the 30mph zone.



Figure 10: Current parking area along Market Street / west of Avenue Park (left) with an alternative option (right)



Figure 11: New footpath from B7015 adjacent to Avenue Park West Playspace

### Anticipated impact of actions set 1.

- Primary school children would be able walk or cycle between their homes, school and local amenities safely. All residents would feel safe crossing the road.
- Facilitate active travel for everyday and functional journeys, supporting health and wellbeing and reducing carbon emissions.
- Traffic congestion around the school would be relieved.
- Safer access to Avenue Park West playspace, children would be supported in their access to outdoor facilities.
- Providing safer access routes for visitors and tourists which support economic development.
- More people are physically active.

## Outcome 2: Wildlife and nature are protected by maintaining Mid Calder's green and blue spaces.

**Description:** Mid Calder is rich in diverse nature and wildlife. It borders Calderwood, the largest ancient woodland in West Lothian and a designated Site of Special Scientific Interest (SSSI). Situated between Calderwood, Linhouse Water, and the River Almond, Mid Calder features woodland corridors that attract a variety of wildlife. Residents often encounter deer, badgers, bats, birds of prey, otters, owls, kingfishers, herons, foxes, and woodpeckers. Mid Calder's natural assets are considered part of the town's heritage. They are valuable for promoting biodiversity, climate adaptability, and supporting West Lothian's green and blue corridors. Protecting these spaces benefits both wildlife and the community, aiding in climate change adaptation and biodiversity promotion.

**How this aligns to wider planning priorities:** Protecting Mid Calder's green spaces aligns to West Lothian Councils development plan. The Central Scotland Green Network (CSGN) is one of six National Developments supporting the creation of liveable places in Scotland's fourth National Planning Framework (NPF4). It is designed to contribute significantly to Scotland's sustainable economic development. In West Lothian, CSGN is a system of multifunctional green corridors that builds on existing green network projects, extending into rural areas to link with adjacent local authorities' networks.

Greenbelts preserve the character and identity of communities while enhancing nature networks and combating climate change. West Lothian's Local Development Plan (LDP) uses greenbelts to maintain towns' identities by preventing sprawl. Mid Calder has a specific settlement boundary in the LDP with additional protections, including designation as a Special Landscape Area, Local Biodiversity Site, Open Space Safeguard, Countryside Belt, Conservation Area, and Site of Special Scientific Interest.

**What our younger people say:** 91% of respondents from Mid Calder Primary School said it's "important" to protect the town's wildlife and natural environment". Specifically, they said:

*"Stop making houses".*

*"Stop littering, look after the woods and be kind to nature"*



**Map of and action list to achieve outcome 2:** Wildlife and nature is protected by maintaining Mid Calder's green and blue spaces.

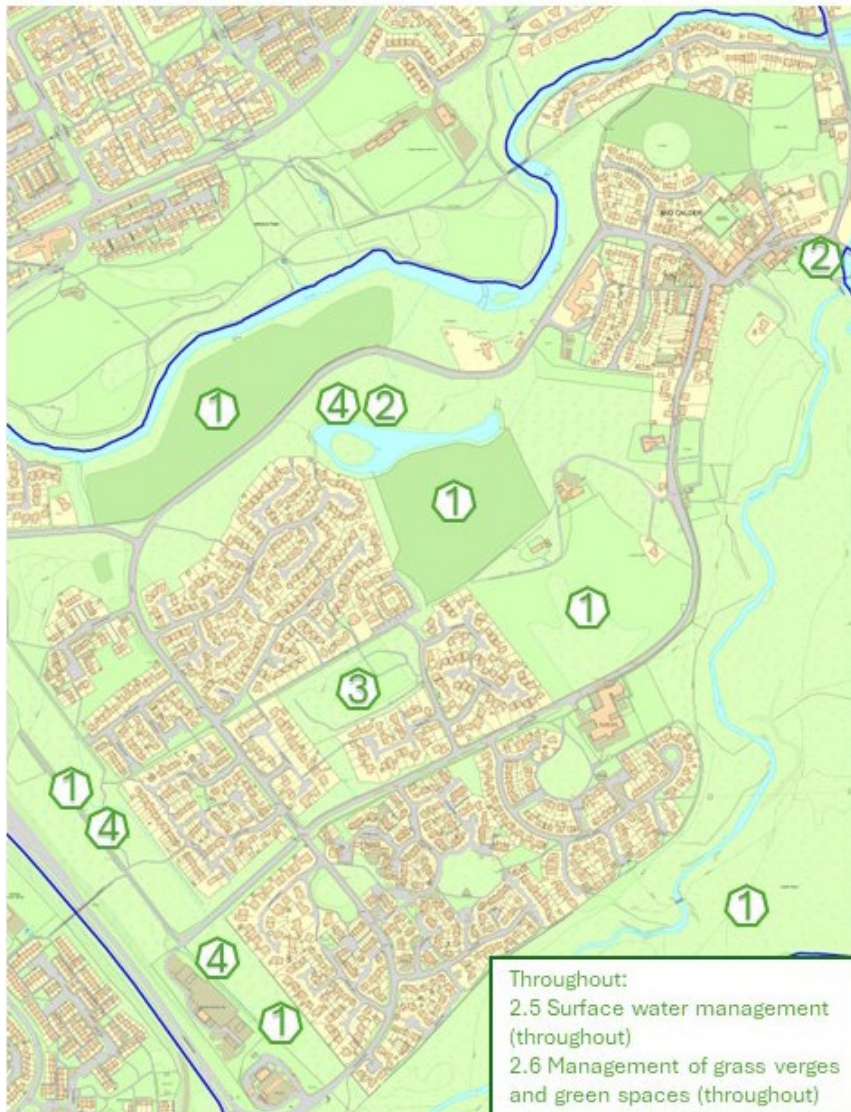


Figure 12: Overview map of proposed actions for outcome 2: Wildlife and nature is protected.

**Summary of actions to achieve outcome 2:** Wildlife and nature is protected by maintaining Mid Calder's green and blue spaces.

- Maintain the greenbelt and open space designated areas - no residential development on field Land East of New Calder Mill (2.1)
- Access and woodland improvement work (2.2)
- Upkeep of Somers Park Wood (heritage) (2.3)
- Bird nest and bat roost boxes (2.4)
- Surface water management (2.5)
- Management of grass verges and green spaces to promote biodiversity and wildflower meadows (2.6)

## Action Plan for Outcome 2

Ref	Title	Context	Proposed Action	Stakeholders
2.1	Maintain the greenbelt and open space designated areas - no residential development on field Land East of New Calder Mill	<p>This includes the field Land East of New Calder Mill Road, Mid Calder. Robertson Homes Ltd had applied for building permission, which was opposed by WLC on the basis of it being contradictory to the open space designation (with several representation also opposing the plans including the MCCC).</p> <p>Mid Calder residents would like to retain this green space where any development permission is in line with maintaining this as part of the green / blue corridor and not developed for housing.</p> <p>There are currently six active allotment sites in West Lothian (many privately-run) and fifteen community gardens. The closest allotment sites to Mid Calder are Killandean (3miles) and Kirknewton (3miles)</p>	<p>Maintain this land as an Open Space designation and countryside belt, maintaining the green network adjacent to the river corridor.</p> <p>No housing development on field. Any change of use of the field should maintain the open space and green network, for example as allotments or recreational space.</p> <p>Any proposed changes in designation of this land away from green space should prioritise the outcomes and actions outlined in this place plan by existing residents, rather than add additional housing.</p>	<p>West Lothian Council, Community,</p> <p>Landowners,</p> <p>NatureScot,</p> <p>Central Scotland Green Network</p> <p>Livingston South Blue-Green Network (LSBGN)</p>
2.2	Access and woodland improvement work	<p>There are many recreational opportunities in the green network around Mid Calder although poor footpaths make them difficult to access for all members of the community.</p> <p>Path enhancement would motivate and allowing residents to visit and value the area, which will benefit their health and well-being.</p> <p>The Gasworks Brae" entrance to Almondell and Calderwood Park is steep and slippery, causing difficult access to the park.</p> <p>The Calder House Pond has great potential to be a wildlife haven but has heavily rooted access.</p>	<p>New and upgraded paths and environment to improve access around:</p> <ol style="list-style-type: none"> <li>Gasworks Brae" entrance to Almondell and Calderwood Park. Links to Almondell and Calder Wood Country Parks from the settlement edges and entrance points should be reviewed, to encourage more use of this valuable resource by local people.</li> <li>Calder House pond. If the landowner was willing, there is interest from the community to develop this area with improved paths and improve the environment to attract more wildlife (kingfishers, otters, etc.)</li> </ol>	<p>West Lothian Council</p> <p>Landowner</p> <p>Mid Calder Community Trust (to be formed)</p>
2.3	Upkeep of Somers Park Wood (heritage)	<p>Woodlands are our allies against climate change. To become carbon net zero, we need to plant more trees and protect the ones we already have. Sommers Park Wood and the connecting sites where a former walled garden and woodland of the former Calder House estate. This is a well-used informal park in the heart of a residential area. This is within the conversation and therefore by virtue the trees are protected by law.</p>	<p>WLC to ensure the Sommer Park Redwoods and other specialist Mid Calder trees are captured and integrated into the Tree &amp; Woodland Strategy and Management Plan and actively managed.</p> <p>Label the trees, what they are, how old they are etc.</p>	<p>West Lothian Council</p>



		<p>Sommers Park Wood is home to fruit trees and also at least 3 Giant Redwood trees. These are one of the largest trees globally and live more than 2000 years. Research has shown that can potentially pull an average of 85 kilograms of carbon out of the atmosphere per year<sup>3</sup>. These, and all the trees in Mid Calder, are valuable natural assets that make a significant contribution to quality of life, the local economy and the environment and should be protected.</p>		
2.4	Bird nest and bat roost boxes	The low-cost addition of nest boxes for birds and roost boxes for bats is a low-cost high impact intervention for protecting biodiversity.	<p>Install 500 bird and bat boxes in Mid Calder.</p> <p>Promote opportunities to seek and discharge funds e.g. to schools or community councils to install bird boxes in their local community.</p>	<p>West Lothian Council</p> <p>Mid Calder Community Council</p>
2.5	Surface water management	<p>The anticipated effects of climate change, point to increase in rainfall volume and, intensity and an increased risk of surface water flooding.</p> <p>Flower beds or green areas can be integrated into proposed traffic calming buildouts.</p>	Surface water management or measures to be integrated into traffic calming measures.	West Lothian Council
2.6	Management of grass verges and green spaces to promote biodiversity and wildflower meadows	Several local authorities across the UK have successfully implemented “no mow may” type programmes through grants and partnerships to offset any additional costs for new machinery or supporting this transition.	<p>WLC to promote “no mow May” to residents.</p> <p>WLC council to adopt the recommendations of <a href="#">Planlife’s Good Verge Guide</a> to manage grass verges and green spaces (seeking partnership and funding if required).</p>	<p>WLC</p> <p>Plantlife Conservation Charity (No Mow May Campaign)</p> <p>Mid Calder Residents</p>

<sup>3</sup> <https://royalsocietypublishing.org/doi/10.1098/rsos.230603>

**Anticipated impact of action set 2.**

- Greater biodiversity
- Increased volunteering opportunities in carbon offsetting activity (tree planting/peatland restoration) and in the community responses to climatic events (flooding)
- Opening up the Almondell and Calderwood Country Park and Mid Calder's green spaces to a broader spectrum of users – improving links to historic features and surrounding communities
- Conserving and improving native woodland habitat and condition of a Site of Special Scientific Interest (SSSI) enhancing the visitor experience thus encouraging more visitors to the area and aiding the economy
- More people are physically active.

## Outcome 3: Mid Calder Heritage is preserved and accessible.



### Description:

Mid Calder is an attractive conservation village renowned for its picturesque setting along the River Almond and its well-preserved architecture, which includes the 16th-century Calder House and the 18th-century Mid Calder Parish Church. Once a central cattle thoroughfare and bustling market town, Mid Calder played a significant role in the region's agricultural and industrial development.

The heritage of Mid Calder defines the character of our village and underpins the everyday lives of its residents. It is an important community asset that requires protection and celebration. In 2022, during a community consultation for Town Centre Funding, one of the ideas put forward was the creation of a Mid Calder Heritage Trail around the village, highlighting our history and heritage. Mid Calder was awarded £10,000 by the WLC Town Centre Fund for the Heritage Trail, which is currently under development. The consultation also underscored the importance of retaining our old buildings, including the Auld School and Institute Hall.



### How this aligns to wider planning priorities:

Mid Calder is one of nine conservation areas of West Lothian and recognized as a core historic settlement. Conservation areas are areas which are worthy of protection or enhancement because they have a special architectural or historic character.

The LDP states that the historic environment is an important part of West Lothian's cultural heritage; it helps to enhance the local distinctiveness of the area; and contributes towards the achievement of sustainable economic growth by playing a key role in supporting the growth of the area's tourism and leisure industry. Conserving and recycling assets



**What our younger people say:** 52% of respondents from Mid Calder Primary School said Mid Calder History and Heritage is "important" to them. Specifically, they said:

*"Protect old buildings" and "Add nice signs".*

*"Maybe have a couple information board somewhere".*

*"Maybe try adding signs at the lizzie Bryce round about saying come visit Mid Calder with information about its past and history you could add this at every entrance [sic] to Mid Calder".*

*"Take a bit of time in school to learn about the heritage of Mid Calder"*



**Map of and action list to achieve outcome 3: Mid Calder Heritage is preserved and accessible.**



*Figure 13: Overview map of proposed actions for outcome 3: Mid Calder Heritage is preserved and accessible.*

**Summary of actions to achieve outcome 3: Mid Calder Heritage is preserved and accessible:**

- High quality walking and cycling route along the Mid Calder Heritage Trail (1.9)
- Mid Calder Heritage Enhancement (3.1)
- Maintain Mid Calder Auld School 9 School Lane for community use (3.2)
- Make productive use of Mid Calder Institute Hall (3.3)



Figure 14: Mid Calder Market Square. Source and Photo Credit: Scottish Shale<sup>4</sup>



Figure 15: Mid Calder North Bridge 1929. Source and Photo Credit: Scottish Shale<sup>5</sup>

<sup>4</sup> <https://www.scottishshale.co.uk/images/old-pictures-mid-calder/#&gid=1&pid=11>

<sup>5</sup> <https://www.scottishshale.co.uk/images/old-pictures-mid-calder/#&gid=1&pid=11>

## Action Plan for Outcome 3

Ref	Title	Context	Proposed Action	Stakeholders
1.9	High quality walking and cycling route along the Mid Calder Heritage Trail	<p>Mid Calder was awarded £10,000 by the WLC Town Centre Fund for a Heritage Trail around the village, celebrating our history and heritage, this is currently under development by Mid Calder Community Council.</p> <p>This route covers several of the locations on the map and therefore encounters the same issues of traffic and lack of safe pedestrian crossings. Mid Calder Community Council would like to promote this as pedestrian route and avoid attracting any additional cars and therefore looking to ensure visitors have safe access routes to and along the heritage trail.</p>	Develop a high-quality walking and cycling route along the Mid Calder Heritage Trail (under development with Town Funding by Mid Calder Community Council) connecting to the wider active travel infrastructure.	<p>West Lothian Council</p> <p>Mid Calder Community Council</p> <p>Historic Environment Scotland</p>
3.1	Mid Calder Heritage Enhancement	Some of the older buildings are falling into disrepair. These are an essential part of Mid Calder heritage and should be kept upgraded to avoid them falling further into disrepair.	Seek funding from conservation and heritage funds for continued upgrading of street/pavement surfaces, shopfronts, street furniture to the standards of other historic towns,	<p>West Lothian Council</p> <p>Land and building owners</p>
3.2	Maintain Mid Calder Auld School 9 School Lane for community use	<p>The property at 9 School Lane, Mid Calder (also known as the Jak Truman Hall and Mid Calder Auld School) comprises sports changing rooms and a community hall, along with a fitted kitchen. The property was substantially refurbished in 2011/12 and the changing rooms are used by the Mid Calder Colts football team. Two cafes have fun from the venue but ceased operation and a viable long-term arrangement has not materialised. The hall is currently empty and unused.</p> <p>This is a treasured community asset that residents want to see being used for well-being or social interest of the local community, including the option of use of the changing rooms for local sports clubs.</p>	<p>WLC Finance and Estates to maintain this asset for community interest use.</p> <p>Mid Calder residents value this community space and request to maintain this as a space offering services to the community.</p> <p>WLC Finance and Estates to meet with representatives of Mid Calder Community Council and the potential Trustees of the Mid Calder Community Trust/Charity to discuss options to ensure Auld School is retained as a community asset being used for well-being or social interest.</p> <p>This may also link to actions 4.2; 4.3; 4.4 as potential community uses.</p>	<p>West Lothian Council</p> <p>Mid Calder Community Council</p> <p>Mid Calder Community Trust / Charity Interested Parties</p>
3.3	Make productive use of Mid Calder Institute Hall	The Institute Hall in Mid Calder is a community space that is used by the Parent and Toddler group, Mid Calder Community Council meetings, a local dance group, a community warm hub and is rented on an ad hoc basis for social activities. It has one large room (Capacity 100), two smaller meeting rooms (capacity 24) plus an outdoor playspace for under 5's.	<p>WLC Finance and Estates to maintain this asset for community interest use.</p> <p>Mid Calder residents value this hall as an important community asset providing key community services. West Lothian council to take actions to enable and support the productive use of Institute Hall</p>	<p>West Lothian Council</p> <p>Institute Hall user groups</p>

**Anticipated impact of action set 3.**

- Community cohesion, facilitating places for the community to meet, for community groups to operate has an immense positive impact on health, wellbeing, social cohesion.
- The historic environment is valued for its contribution to our knowledge and sense of identity, ownership and stewardship.
- Mid Calder's heritage has a powerful role to play in shaping a distinctive, vibrant and prosperous place attracting more visitors to the area to boost the local economy.
- The historic environment is seen as making a positive contribution to community life by boosting social capital, increasing mutual understanding and cohesion.

## Outcome 4: Day-to-day services and facilities are in easy reach of home for everyone in Mid Calder



### Description:

The fourth priority area from the consultation is improving local amenities and services for residents, particularly youth and the elderly. While Mid Calder is near larger towns with various amenities, these are less accessible for younger people and those with mobility limitations. Residents have identified priority services and facilities needed locally to support both physical and mental well-being. The consultation highlighted gaps in recreational provisions for children and youth, community meeting spaces, and essential services such as health clinics, post offices, and banking.

Specifically, Mid Calder residents want local youth provisions like a youth club, outdoor recreation facilities, and play spaces; social spaces such as cafés and warm hubs; and food shopping facilities. They also prioritize local access to health clinics, post offices, and banking services. Recognizing the challenge of bringing these services to each place, the consultation suggested designating an area for mobile services to support local businesses and provide essential services to the village.



### How this aligns to wider planning priorities:

Twenty-minute neighbourhoods and local living are key elements of the National Planning Framework (NPF4), which aims to rethink places by prioritizing climate and nature, addressing long-standing challenges and inequalities, and fostering stronger, greener, fairer, and healthier communities across Scotland. Planning, designing, and delivering places that support local living, where people can meet most of their daily needs within a reasonable distance of their homes, is essential. This approach aims to improve climate outcomes, health inequalities, the local economy, and quality of life. The identified actions highlight the priority areas Mid Calder residents need to achieve the local living objective.



### What our younger people say:

86 % of respondents from Mid Calder Primary School said it's "important" that young people have improved access to day-to-day facilities and services in Mid Calder.

Specifically, our younger people asked for:

*“Get more useful (sic) shops so you can really get everything you need with not even leaving your own village”.*

*“I would add more food shops because there feels like there are any at all”.*

*“A post office, doctor office and cafes”*

*“Maybe some more shops and youth clubs” - “Game clubs”*

*“More mini playgrounds” - “More shops and play areas”.*



*“More toilets”*

*“A local bookstore (or library) that has a variety of books would be really, really amazing! It would be really nice to be able to get some books without having to travel for ages.”*

*“There could be a Saturday pizza van and waffle van”.*

*“Maybe some places for kids to work and start their life with money”.*

*Table 1: Mid Calder community assessment of services and facilities for residents Bold = priorities for Mid Calder local living*

<b>Walking Distance 5 mins</b>	<b>Within 10 mins</b>	<b>Within 15 mins</b>	<b>Within 20 Mins</b>	<b>Out width 20 mins</b>
Home Bus stop Green space		Chemist Large green space Primary School Place of worship (Church) <b>Play Park.</b>	Local shop Care home. Pub Village green <b>Community Hall</b>	<b>Food shop</b> <b>Café</b> <b>Bank - Post office.</b> Swimming pool <b>Sports pitches</b> <b>Pump / bike / scooter track.</b> Place of worship (Other) <b>GP services</b> Regional travel Secondary education Tertiary education Employment <b>Youth club / provisions</b>



**Map of and action list to achieve outcome 4: Day-to-day services and facilities are in easy reach of home for everyone in Mid Calder**



*Figure 16: Overview map of proposed actions for outcome 4: Day-to-day services and facilities are in easy reach of home for everyone in Mid Calder*

**Summary of actions to achieve outcome 4: Day-to-day services and facilities are in easy reach of home for everyone in Mid Calder**

- Outdoor recreation facilities and play spaces (4.1)
- Youth club or drop-in centre (4.2)
- Social spaces for community meetings, such as cafes or warm hubs (4.3)
- Health services being made available (4.4)
- Designating an area of the car park at Avenue Park West to licence mobile services (4.5)
- Provisions for a local shop selling fresh food (4.5)

## Action Plan for Outcome 4

Ref	Title	Context	Proposed Action	Stakeholders
4.1	Outdoor recreation facilities and play spaces	<p>Mid Calder is well provided for in terms of open space provision for passive and active recreation. Open spaces are of a reasonable quality however the residential area bounded by Braeside Park, Calder Park Road, Ochiltree and Tennant Park is not provided for in terms of local play parks.</p> <p>Adjacent parks are separated by road corridors that prevent safe access routes for younger children (see outcome 1 actions).</p>	<p>Provide a neighbourhood park or recreational facilities with safe travel routes to and from home for children residential area bounded by Braeside Park, Calder Park Road, Ochiltree and Tennant Park.</p> <p>(Note Map location indicates the centre of houses to be served, actual location of play park tbd)</p>	West Lothian Council
4.2	Youth club or drop-in centre	<p>The consultation highlighted a lack of local provisions for youth. Mid Calder has three pubs and two community halls (reservation only basis) but there are no spaces that are readily available for younger people to go to or services that target youth.</p> <p>The lack of toilets outside of the home that a community space may be able to offer also was raised both during this consultation and during a 2022 consultation.</p>	<p>Good quality youth facilities and services are made available to Mid Calder youth, linked to a wider network of support.</p> <p>This could possibly connect with action 3.2: Maintain Mid Calder Auld School 9 School Lane for community use</p>	<p>West Lothian Council, Community, Youth Action project, other civil society groups or service providers.</p>
4.3	Social spaces for community meetings, such as cafes or warm hubs	<p>Similar to point 4.3 the consultation highlighted a lack of community spaces for residents to come together.</p> <p>There is no café in Mid Calder. The Auld School was formally run as a café but closed in 2023. A warm hub has recently started in Mid Calder Community Hall but there is concern re the viability of this if WLC close the hall.</p> <p>The lack of toilets outside of the home that a community space may be able to offer also was raised both during this consultation and during a 2022 consultation.</p>	<p>Good quality social facilities and services are made available to Mid Calder residents, in the form of cafes or meeting spaces.</p> <p>This could possibly connect with action 3.2: Maintain Mid Calder Auld School 9 School Lane for community use</p>	<p>West Lothian Council Service Providers</p>
4.4	Health services being made available	<p>Mid Calder residents are served by the East Calder GP surgery.</p> <p>East Calder Medical Centre is heavily oversubscribed and straining under current capacity. Efforts to secure a new building and increased capacity started more than ten years ago but a new building and additional capacity has not been forthcoming. West Lothian Health and Social Care Partnership (HSCP) has recognised that the current building is no longer fit for purpose and believes that in order to provide safe, effective, high-quality</p>	<p>To relieve the pressure on East Calder Medical Centre and bring essential health services closer to Mid Calder, we propose roving health clinics or teams or satellite teams operating out of Mid Calder for specific outreach.</p>	<p>West Lothian Council Lothian Health Board</p>

		services for patients a new building must be commissioned. Meanwhile all NHS infrastructure investment has been put on hold, further stalling this essential work.	This could possibly connect with action 3.2: Maintain Mid Calder Auld School 9 School Lane for community use	
4.5	Designating an area of the car park at Avenue Park West to licence mobile services	20 min neighbourhoods are challenging for older people. An Age Scotland survey showed that for the older generation, essential services for a 20-min '20 Minute Neighbourhood' to be successful were a bank (32%), a post office (23%) and community spaces (23%); the top three facilities were accessible toilets (41%), good digital connectivity (33%) and buses with local bus stops (25%). <sup>6</sup>	Designating an area of the car park at Avenue Park West to licence mobile services (post offices, banking, fresh food) to support local businesses and provide essential services to the village.  Ideally this would operate on a scheduled basis where each day of the week attracts a different service.	West Lothian Council  Mobile service providers (post office, bank)  Mobile food trucks (residents have suggested coffee, pizza, waffles, fish van)
4.6	Provisions for a local shop selling fresh food	Mid Calder is served by two convenience stores: one on Bank Street with limited fresh food options and a Little Waitrose Shell service station at the Lizzy Brice Roundabout where prices tend to be higher than nearby supermarkets. Mid Calder is well served by several large supermarkets in Livingston.  Research tells us supermarkets are the most common destination for car journeys outside 20-min neighbourhoods. This dynamic exists even where there are food shop options locally, due to the range of products and competitive prices of supermarkets compared to local options <sup>7</sup> . This said walking to food stores is more common in 20-min neighbourhoods. <sup>8</sup>	To reduce car journeys and achieve the 20 min neighbourhood, consider placement of a local shop which facilitates easy and equitable access to affordable healthy food in Mid Calder.	West Lothian Council

<sup>6</sup> <https://www.agescotland.org.uk/news/144-32-of-older-people-say-20-minute-neighbourhoods-not-possible-due-to-lack-of-local-services#:~:text=Almost%20a%20third%20of%20older,available%20local%20services%20and%20facilities.>

<sup>7</sup> <https://www.livingstreets.org.uk/media/ghkbr3zy/20-minute-neighbourhoods.pdf>

<sup>8</sup> <https://www.tandfonline.com/doi/full/10.1080/23748834.2023.2297333>

**Anticipated impact of action set 4.**

- Individuals and communities have developed resilience and have choices.
- More people are physically active.
- More people can eat well.
- More people can access, and engage with, activities, services and assets which aim to support healthy weight and the prevention of type 2 diabetes.
- People have local access to physical activity.
- People have local access to affordable healthy food and the knowledge to produce healthy meals.
- Reduced social nuisance representing a cost saving of public services.