



**Land east of B4046, Ecclesmachan**

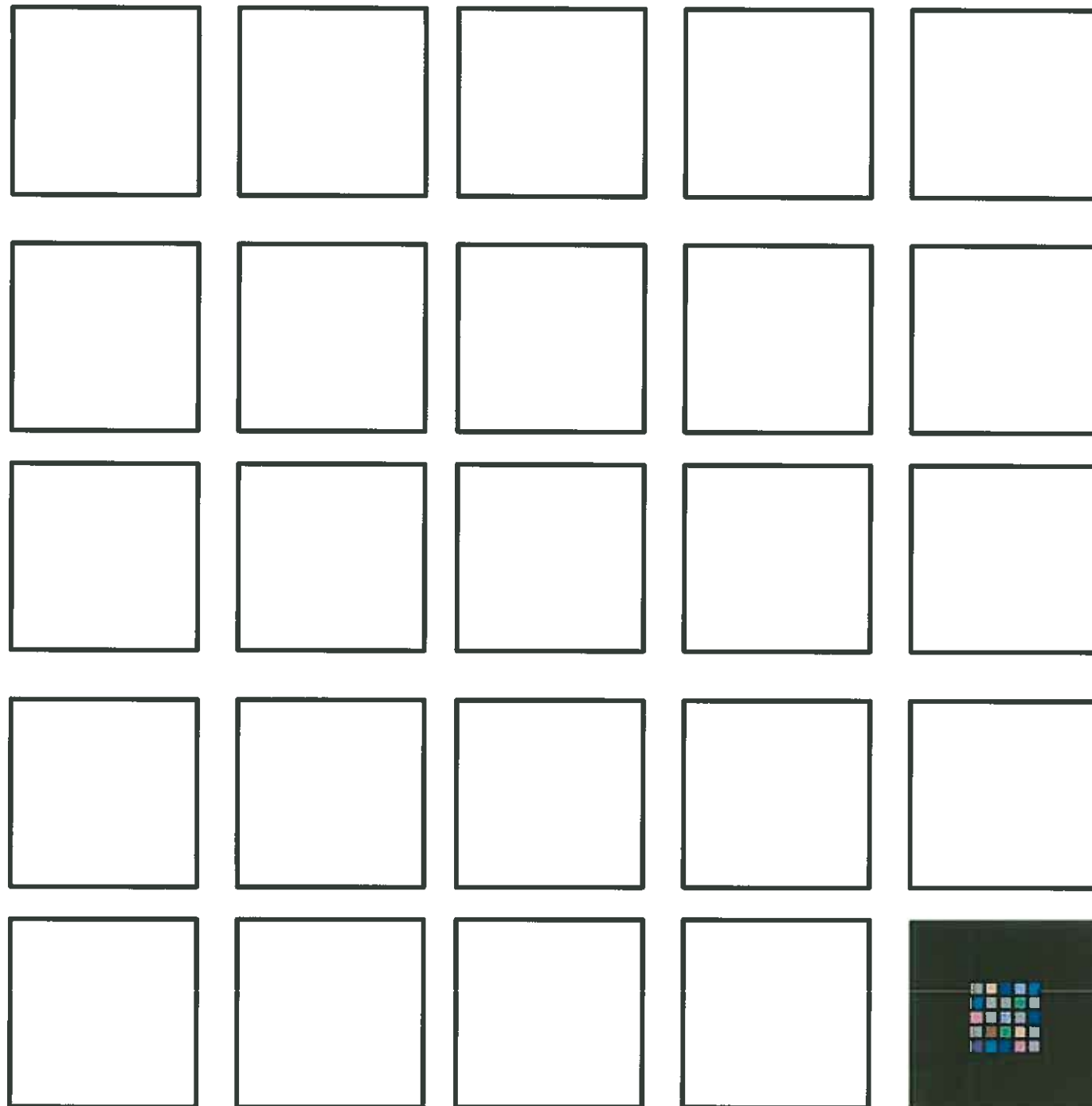
**Further information in support  
of the Local Development Plan**

prepared for:

**Hopetoun Estate**

date:

**January 2013**



**yeomanmcallister**  
architects interiors

willis-hira.0241-

## site location



# Ecclesmachan

The land at Ecclesmachan provides an appropriate infill site for a small residential development.

Site	Acres		Units
	Gross	Net	
A	0.7	0.5	5

Site A would be accessed from the B8046 and could provide 5 houses providing a new line of semi-mature trees to the east, tying in with existing species which are located along the eastern edge of the settlement.



**yeomanmcallister**  
architects interiors

### **Planning Manager**

Justin Lamb Associates  
2nd Floor  
23 Castle Street  
Edinburgh  
EH2 3DN

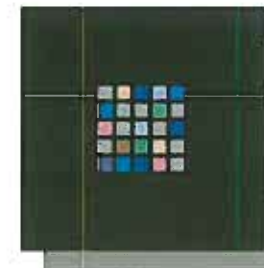
email : [justin@jlaland.co.uk](mailto:justin@jlaland.co.uk)

### **Architect**

Yeoman McAllister Architects  
Waterside Studios  
Coltbridge Avenue  
Edinburgh  
EH12 6AH

Tel 0131 346 1145  
Fax 0131 346 1189

web: [www.ym-architects.com](http://www.ym-architects.com)  
email: [info@ym-architects.com](mailto:info@ym-architects.com)



**yeomanmcallister**  
architects interiors