



ART WAYS

WINCHBURGH



WWW.ARTWAYS.CO.UK







About Artways	page 2
Art Walks	page 3
Art Maps	page 4/5
ArtWays Workshops	
1. Art Mapping Workshop	page 6/7
2. Clay Workshop	page 8-13
3. Blossom Workshop	page 14
4. Stencil Workshop	page 15
5. Flag Workshop	page 16/17
6. Chalk Workshop	page 20/21
Flag Parade	page 18/19
Artways Mural	page 22/23
Resources	page 23

HOW TO USE THIS GUIDE

This ArtWays guide takes you step by step through a series of art workshops following in the creative footsteps of different groups in Winchburgh. Beginning with how to explore the great outdoors like an artist with art walks to art mapping workshops. To becoming an art explorer foraging from nature to create relief prints in clay to make a ceramic plate. Looking at your favourite outdoor places and how to reimagine them in fabric. Using papercraft to design a flag that celebrates your identity and the places you like to explore. To new ways to apply your design ideas to different surfaces in chalk and paint to create colourful murals.

Each workshop gives you different 'art ways' processes and materials to experiment with, designed to encourage collaboration, to celebrate and value learning from each other and enjoying the freedom and explorative nature of creativity.



ABOUT ARTWAYS

The ArtWays project is led by Winchburgh's artist in residence Gill White.

This project is one of five projects to be delivered over the next seven years that are described within the 'Big W' Public Art Plan. The plan seeks to reflect a sense of place, the changing nature of the community as well as the local heritage and the aspirations of the residents for the future.

ArtWays is designed for the community to have fun outdoors exploring and making art together. Gill was inspired by Winchburgh's strong sense of community, the diversity of its landscape and everyone's active enthusiasm for their local green spaces.

Each workshop was designed for all ages to experiment with different mediums and new creative approaches of looking at your surroundings to experiment with re-imagining it artistically through abstraction and how to apply it to different surface design be it on paper, pavements, clay or fabric. Each workshop was designed to encourage collaboration giving everyone an opportunity to work individually, in pairs and as a group to have fun supporting, inspiring and appreciating each other's creativity.

Over 120 people of all ages took part in ArtWays workshops over a 6-month period between March to October 2022.

ARTIST BIO

Gill White is a multidisciplinary artist working in art, design, and film. Her public art and participatory art projects actively encourage spending time in nature, exploring landscapes and celebrating what makes a place unique. Her work blends visual art, film, creative writing, and storytelling.



Many of her projects are playful experiences designed to spark people's imagination and to actively encourage a culture of creative collaboration.



ART WALKS

Winchburgh has a wonderful diverse range of landscapes to explore from its gentle sloping farm fields, its canal walks to its Bings.

IDEAS TO EXPLORE

Why not take a walk with someone, let them lead the route and conversation. Listen to their unique perspective of living in Winchburgh.

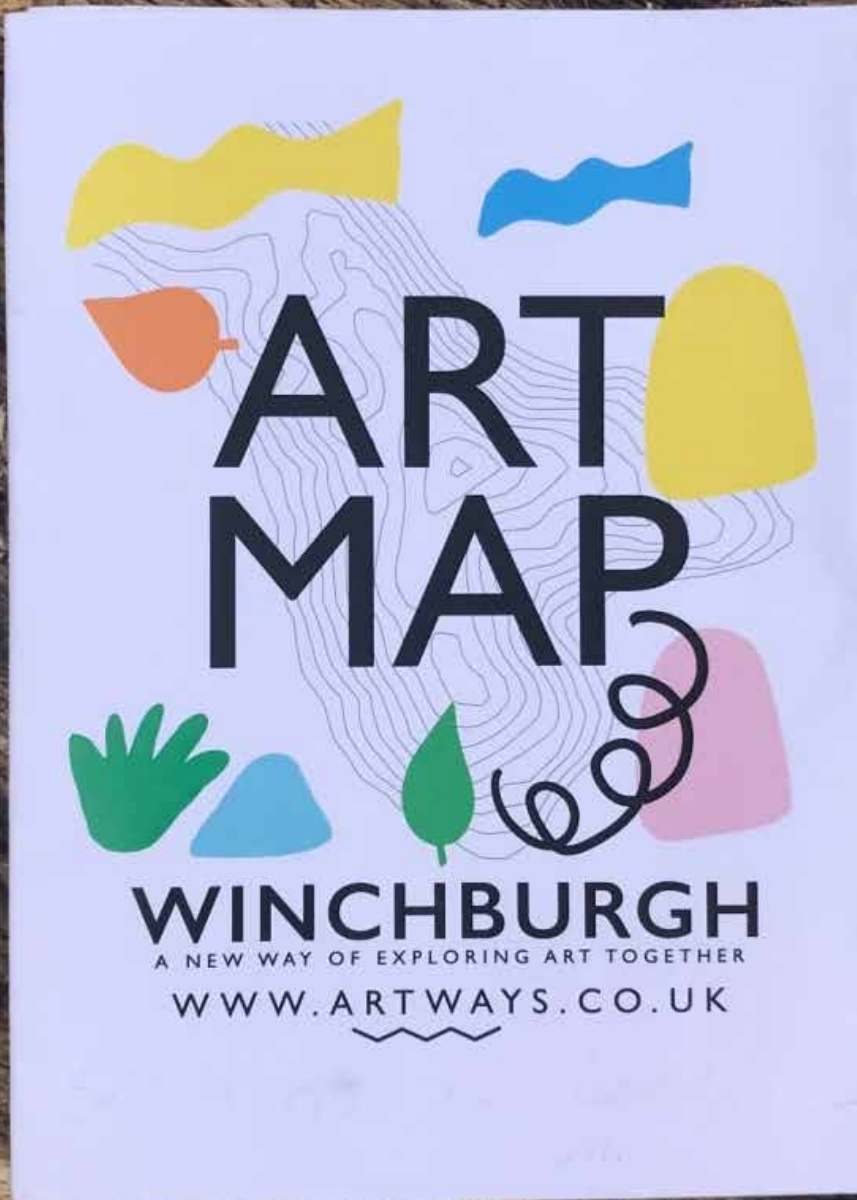
How would you capture and share this experience?

- it could be photographing your own point of view (POV) as they lead you through the landscape as featured above.

- could you draw the experience as a continuous line showing a micro and macro meander?

- could you use your mobile to record an audio of the different environments you explore, editing and weaving it with your own audio observations and the conversations you have with the people explore with?

- could you suggest a walking route and ask different ages to share their experience - what makes each journey unique?



ART MAPPING WINCHBURGH

To help spark creative collaborations between all ages and to celebrate the explorative nature of creativity 600 DIY Art Maps were printed and placed in the community giving everyone an opportunity to collaborate and share each others art adventures.

Each map helps guides you how to explore like an artist and document your surroundings in a new way, encouraging everyone in the community to create a DIY Art Map to help build an ever evolving collection of how locals and those new to the area can be inspired by everyones different perspective of living in Winchburgh. Our growing collection of Art Maps illustrate local talent adapting different art techniques from sketches, collages to painting.

Everyone was actively encouraged to add their completed maps to the ArtWays website www.artways.co.uk.





WORKSHOP 1 ART MAPPING WORKSHOP

TOOLS & MATERIALS

A4 Paper, A3 layout paper, board, A4 black card, pencil, graphite stick or crayon, scissors or compass cutter, masking tape or blue tack, iPad or digital camera.

STEP 1 MOVEMENT MAPPING

This exercise is an introduction to physical abstract drawing. Place a sheet of paper on a clip board. With a pencil draw and walk without looking at the paper. Take it in turns to direct the movement of the group call out different ways of moving to create a series of 'movement maps' - title each drawing while walking, running, jumping, spinning and dancing. Reflect on each others drawings, what did you discover?



STEP 3 SKETCH MAPPING

With the same circular viewfinder look to the horizon seeking aspect of the landscape to sketch, draw and photograph. Collect and share your observations with the group.



BE INSPIRED BY THE PUPILS OF WINCHBURGH PRIMARY SCHOOL & HOLY FAMILY PRIMARY SCHOOL WITH THIS GROUP ART MAPPING WORKSHOP



STEP 2 TEXTURE MAPPING

Next explore your environment by 'texture mapping' - with a sheet of A3 layout or thin paper and circular viewfinder. Take a A4 black card and cut out a circle in the middle - this is your viewfinder and stencil. Use it first as a stencil to capture the textural landscape of your surroundings. Using the side of a graphite stick or crayon to adopt Frottage's texture rubbing technique. Explore your surroundings. Collect three different textures, then share your findings with the group by displaying them on the exterior walls of a building.



STEP 4 GROUP REFLECTIONS

Display everyone's individual art as a collection to discuss and reflect on how each individual contribution can influence a collective exhibition.

WORKSHOP 2 ART MAPPING NATURE IN CLAY WORKSHOP

TOOLS & MATERIALS

1kg pack air dry clay, modeling tools, board, rolling pin, paper plate, paper, water cup, sponge, light box, black card, acrylic paint nature clippings, sticks, stones, acrylic paint brush, varnish matt or gloss



STEP 2 DRAW FOR INSPIRATION

Draw a large circle on a A4 paper.
Close your eyes and think of a green space place that is special to you. Open your eyes and draw that place. Write 5 reasons why you chose this place.



STEP 4 CHOOSE SELECTED PLANTS

Select what plants you would like to feature in your plate design.

BE INSPIRED BY OUR CLAY MAKING GROUP AND EXPERIMENT WITH THIS ART MAPPING NATURE IN CLAY WORKSHOP THAT GUIDES YOU HOW TO MAKE YOUR OWN CERAMIC PLATE

STEP 1 FORAGE FOR INSPIRATION

Draw a circle on a map then go explore that area collecting plant clippings, branches, pebbles and stones.

Returning from your adventures, set up a discovery table with everyone's foraged plant clippings, stone, pebbles, if collected from different local areas compare them. What plants can you identify? Use nature apps to help identify what you found or be creative and make up your own plant names!



STEP 3 PHOTOGRAPH YOUR INSPIRATION

Cut out a large circle on A4 card. Arrange your nature composition within the circle, if you have light box place your designs on top and take a photo.





PHOTOGRAPHY COLLECTION

A collection of each botanical print created by the clay group. Created by collecting and arranging plants and found nature from local green spaces, each composition is illuminated on a light box framed by a circle card mount.

WORKSHOP 2 ART MAPPING NATURE IN CLAY WORKSHOP

STEP 5 WORKING WITH CLAY

Cut a 500g block of air dry clay (a 1kg pack will make two plates). Roll out your air dry clay to a 5mm thickness. Use a paper plate or plate from your kitchen as a template. Place it face down on the clay and cut around the plate to create your clay plate shape. Remove the plate, look for any surface imperfections in your clay, dip your finger in a little bit of water to help smooth the surface and edge of the clay plate. Arrange your plants in the clay, use a rolling pin to create a relief print of your plant composition in the clay, use your pebbles and stones to make patterns.

When you are happy with your design, place it back in the paper plate to retain the shape, let it dry for a week, flipping it mid-week to dry both sides.



STEP 6 PAINTING YOUR PLATE

Acrylic paint is ideal for working with air dry clay. Work in layers of paint. Use a sponge to apply and remove your paint, this will give a good base for picking up the finer details of your relief print.

To help retain the vibrancy of paint colour, you can also varnish your plate for a matt or gloss finish.



STEP 7 PHOTOGRAPH YOUR PLATE

Our clay making group used a cube photo light box to photograph each plate. Alternatively, use a roll of white paper in a well-lit space or use natural light outdoors.





PLATE COLLECTION

A collection of each ceramic plate created by the clay group. Display your plate as a group collection to discuss and reflect on how each individual contribution can influence a collective exhibition.

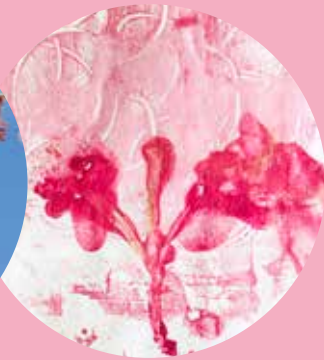
WORKSHOP 3 ART MAPPING A TREE WORKSHOP

TOOLS & MATERIALS

Blossom, leaves, twigs, branches, acrylic paint, sponge paintbrush, cotton buds, tree photography, archive photos, paper, tracing paper, aluminum foil, paint tray, paintbrush, pencil, rolling pin or ink roller

STEP 1 FIND INSPIRATION

This activity is inspired by locals love of Winchburgh's blossom tree which was planted on the Queens Coronation. We collected leaves, blossom, twigs, archive photos of the Queens coronation and commemorative coins.



BE INSPIRED BY THE BLOSSOM PAINTING GROUP THIS WORKSHOP GUIDES YOU HOW TO EXPLORE GESTURAL PAINTING & PRINTS



STEP 2 RELIEF PRINTING

Start with 2 sheets of A5 (half of A4) paper, put one to the side. In a paint tray, gently coat the underside of leaf with a paintbrush. Lift it from the tray and place it paint side down in the center of the paper; place your second sheet on top, press and smooth it with the hand, use a roller to add more pressure. Remove the second sheet and gently lift the leaf off to reveal your relief print.

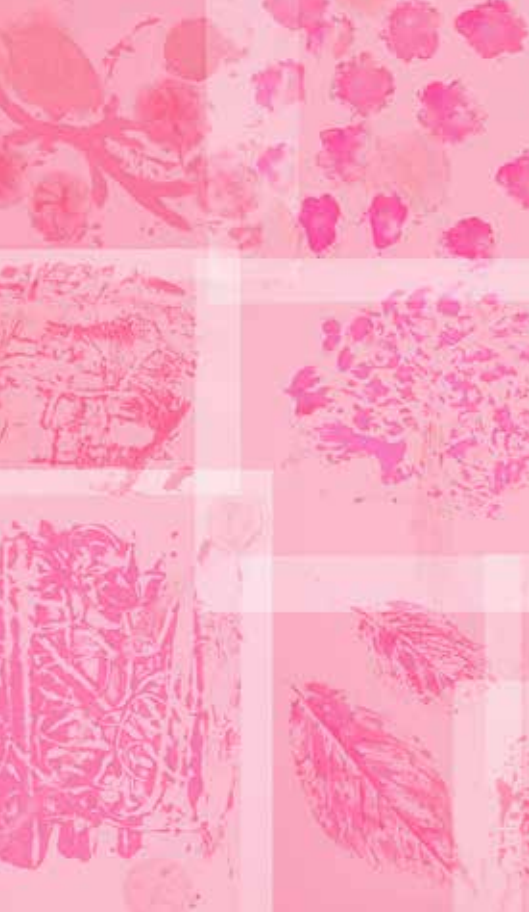
STEP 3 GESTURAL PAINTING & PRINT

Study the form of blossom, think how you can mimic it's form using gestural painting techniques. Take a folded sheet of aluminum foil cover the surface in paint. With a cotton bud draw your blossom impression in the paint, then place a sheet of paper on top, press and smooth it with your hand, use a roller to add more pressure. Lift the second sheet to reveal your relief print. Take a twig and place it on our relief print, draw around its outline, lift it off then shade and contour filling in the detail.

Add layers of narrative to your print with coin rubbings, and archive photo transfers using the tracing paper.

STEP 4 PRINT ON FABRIC

You can use this same technique working directly on fabric by substituting the acrylic paint for fabric paint. Alternatively you can collate your prints and create a collage to be digitally printed on fabric. Our blossom group produced a scarf and tie.



WORKSHOP 4 ART MAPPING STENCIL WORKSHOP

BE INSPIRED BY THE BABY & TODDLER GROUP THIS WORKSHOP SHOWS HOW TO EXPLORE STENCIL PAINTING



TOOLS & MATERIALS

Roll of paper, card, pencil, scissors, paint, paint tray, paint rollers, chalk

STEP 1 FIND SHAPES

Go for a walk and sketch plant outlines, if it's sunny look to the pavements for plant shadows and use them for inspiration.

Draw your plant outline on a card then cut it out the shape.

STEP 2 PAINT WITH STENCILS

Roll out a long sheet of paper, place your stencil on the paper, place separate paint colours in trays and use a sponge to paint your stencil shape. Keep moving around the paper to fill the whole sheet of paper. Experiment with placing it on the ground and adding paint footprints.

STEP 3 CHALK WITH STENCILS

Keep your stencils and use them with chalk on a pavement



WORKSHOP 5

ART MAPPING A FLAG WORKSHOP

TOOLS & MATERIALS

Paper, coloured card, pencil, scissors, circular compass cutter, pritt stick glue, double sided tape, wooden pole, digital camera



STEP 2 RESEARCH

Flag design uses bold shapes, colours and visual metaphors. Research the language of flags, abstract painting and graphic minimalism. Abstract art does not attempt to represent an accurate depiction of a visual reality but instead use shapes, colours, forms and marks. Minimalist graphics are hard-edged, with clear, precise transitions between areas of color.



STEP 4 PARADE YOUR FLAG

Photography your card flag design in the natural landscape and observe how each outdoor location can alter the artworks appearance.

You can also photograph and digitally print your card flag design on outdoor fabric, remembering to make a folded pole pocket to attach the fabric to a wooden pole, you can temporarily fix it with double side tape at the top of the pole to create hand held flags to parade.

BE INSPIRED BY THE PUPILS OF WINCHBURGH PRIMARY SCHOOL AND HOLY FAMILY PRIMARY SCHOOL WITH THIS FLAG MAKING WORKSHOP

STEP 1 IMAGINE A LOCAL LANDSCAPE

Take a sheet of paper, place it on a table, rest your head on the paper, draw around your profile, lift your head and close your eyes. Imagine a place that is important to you, open your eyes and draw this place, draw within sketch of your head, visualize the place as if in your imagination.

Write 5 reasons why you chose this place. This design process helps you develop a creative rationale about what visual ideas you would like to represent in your flag design.



STEP 3 DESIGN A FLAG

Imagine how you can express your relationship with your favourite local landscape using bold shapes compositions and colours to make a flag.

Paper craft is versatile material and tool to help create minimalistic designs. Design, cut and layer your flag design using coloured card, take time to play with different compositions before gluing each layer.







A PARADE OF FLAGS

Winchburgh Academy S1 pupils all helped parade all the P7 flags, led by a piper they claimed their new playground with their flags, as part of the opening of Auldathie Park celebration.



FLAG COLLECTION

All the wonderful colourful flags created by P7's flags are now on display in Winchburgh Academy.

Opposite page selection of pupils who posed with their flag designs.

WORKSHOP 6

ART MAPPING A PAVEMENT WITH CHALK WORKSHOP

BE INSPIRED BY EVERYONE WHO TOOK PART IN OUR CHALK WORKSHOPS IN PARTNERSHIP WITH WINCHBURGH COMMUNITY DEVELOPMENT TRUST

TOOLS & MATERIALS

Pavement chalk, masking tape, card, scissors



STEP 1 PICK A PAVEMENT

Pick a pavement, make sure you have permission to chalk on it. We chose this path as it was long, wide and easy for groups of people to access.

STEP 2 MASKING YOUR DESIGN

Mark out with your masking tape your design. Use straight lines to create a mosaic pattern, rip your masking into smaller pieces to write words or curved shapes.



STEP 3 CHALK DESIGN

Once you have finished masking your design. Colour in each mosaic shape, use your hand to blend colours and to create gradients of colour. Customise your mosaic shape with scenes inspired by your favourite places.

Once your group is completed chalking, slowly peel off the masking tape to reveal the crisp edges of your design

STEP 4 EVERYONE

Invite different ages to add to the chalk design, we had early ages to teens take part in our workshop. Imagine if you invited the whole community how would your design change as each group added their design.

When you walk on the pavement can you invent a game only jumping on certain colours or themes.





ART WAYS PAVEMENT MURAL

AS PART OF THE ARTWAYS PUBLIC
ART LEGACY ARTIST GILL WHITE
CREATED A COLOURFUL MURAL

Energised by all the ArtWays workshops and the warmth and enthusiasm of the local community Gill was inspired to create a pavement mural that was colourful, happy and celebrated the unique appeal of Winchburghs heritage and its wealth of green spaces and its strong sense of community.

Here is brief outline of Gill's creative journey to create the mural design:

Step 1

Collating and reflecting on all the workshop conversations and ideas generated from the DIY Art Maps.

Step 2

Using paper craft to create rapid prototypes to experiment with different nature shapes.

Step 3

Source photography of the miners rows and environmental studies reflecting the unique plants thriving in the Bings and in the woodlands of Winchburgh.

Step 4

Creating the miners rows and plants as a minimalistic abstraction as a vector graphic using Adobe illustrator.

Step 5

Presenting a first draft of the design to project partners to find the ideal placement for the mural. The pathways to Auldcathie Park was chosen as it leads directly to Winchburgh's green spaces.

Step 6

Collaborating with our thermoplastic suppliers to refine the vector design to aid the paint fabrication for installing on the pavement surface.



MURAL CREATIVE RATIONAL

Our colourful path takes everyone on a joyful journey through Winchburgh's evolving landscape. We begin below ground, a mosaic of pink, red rock hues, echo the past industries of working and mining the land, featuring the silhouettes of the miner's rows, at the heart of the community and Winchburgh's industrial history. The rows like steps, lead us up to the horizon to a spectrum of colour celebrating locals love of capturing the sunrises and sunsets.

We then step forward into a nature trail of colourful abstraction of all the unique plants that adapt and evolve in the local landscape from the bings to its woodland's species like: greater knap wood, corn marigolds, chicory, early purple orchard, knotted pearl wort, crowberry, tall melilot, grey field speedwell, greater butterfly orchid and a silver birch woodland - echoing the adaptiveness of the land and its people. Celebrating a community that is growing with a shared interest to explore and nurture the evolving green havens that make Winchburgh a green gateway for West Lothian adventures.

Artist Statement
Gill White

ART RESOURCES

TOOLS, MATERIALS AND ART ORGANISATIONS THAT CAN HELP INSPIRE YOUR FUTURE ART PROJECTS

TOOLS & MATERIALS

Local suppliers for art materials

Hobbycraft
hobbycraft.co.uk

Edinburgh Art Shop
edinburghartshop.co.uk

Cass Art
cassart.co.uk

DIGITAL PRINT SUPPLIERS

Digital print suppliers for different mediums

Edinburgh Copy Shop
edinburghcopyshop.co.uk

Pixartprinting
pixartprinting.co.uk

PAVEMENT MARKINGS

Geveko Markings
geveko-markings.com

VISIT ART GALLERIES

Be inspired by other artists. Visit these organisations for visual artists exhibitions and talks.

Linlithgow Burgh Halls
linlithgowburghhalls.co.uk

National Galleries Scotland
nationalgalleries.org

Scottish Academy
royalscottishacademy.org

Edinburgh Printmakers
edinburghprintmakers.co.uk

Dovecot Studios
dovecotstudios.com

Jupiter Art Land
jupiterartland.org

VA Dundee
vam.ac.uk/dundee

ARTIST OPPORTUNITIES

These organisations help nurture local artistic talent

Fife Contemporary
fcac.co.uk

Creative Scotland
opportunities.creativescotland.com

Craft Scotland
craftscotland.org



Thank you to everyone in the community who took part in ArtWays

Special thanks to all the lovely staff and pupils of Winchburgh Primary School, Holy Family Primary School and Winchburgh Academy for their creativity and support. Robertson Homes for giving ArtWays a place to call home. Julie Witherwick at the Community Centre for displaying our Art Maps. Sabrina Hayes and Baby and Toddlers Group for their enthusiasm and support. Billy Taylor from the Winchburgh Parish Church for the generous loan of tables. Gillian Chivell and Marion Murdoch for their wonderful guided walks. Everyone in our Clay group for their sense of fun and creativity. Wendy Buttons for her generous paper donation. Winchburgh Bowling Club for giving us a perfect exhibit and social space. The warm welcome from the Winchburgh Community Development Trust (WCDDT) Companion Group. Everyone who took part in our happy chalk workshops. Everyone who posted on the Art Ways website and Village Group on Facebook. Leigh Lauder from WCDDT for her help and support. Jamie Cochrane and the team at Geveko Markings for our pavement mural fabrication and install.

The Art Ways Partnership Camille Archer and Wendy McCorrison at West Lothian Council, Penny Lochhead at Winchburgh Developments Ltd and Hazel Mcleod at Winchburgh Community Development Trust for their enthusiasm and support.