

# Craigton Park

January 2021



## Summary

### ***How people rate the park***

Generally the park scores are average, but some key categories are rated well below average. Top-scoring features are Accessibility, Community Involvement and Attractiveness. Below- average scoring features are Sustainability, Biodiversity, Economic benefits, Regulating benefits and Information/Signage. These indicate the themes that are currently working well or could be significantly improved.

### ***What people like about the park as it is***

The most popular elements of the existing park are numerous - the lists of things that people like about the park indicate that the variety of things on offer is appreciated. Other popular features are the size / open space and the location (central / close to home).

### ***What people don't like / issues raised***

Despite the things that people like about the park, the main thing that people don't like is that it's generally empty/ boring/ tired. The largest single issue raised is lack of lighting. This is followed by dog fouling/litter, lack of pedestrian access to all areas of the park, a lack of seating and outdated skatepark design.

### ***Recommendations for action – based on all information collected***

By analysing the park scores and bringing together feedback from all stakeholders, recommended actions for improving the park in the short- and long-term are:

- 1) Planting
- 2) Flood lighting
- 3) Paths and path drainage
- 4) Signage
- 5) Seating and bins
- 6) Review of skatepark and playpark equipment
- 7) Car parking

### ***Potential Partners***

Suggestions for local partners, who may be able to help with the recommended improvements, include: Winchburgh Community Growing Group, Winchburgh Community Council, Winchburgh Albion Youth Football Club, Winchburgh Community Development Trust and Winchboarders.



## Introduction

Craigton Park in Winchburgh is owned by Hopetoun Estates. It is leased from Hopetoun by West Lothian Council, and is safeguarded as open space in the West Lothian Local Development Plan (2018). It is designated as a Neighbourhood Park in the West Lothian Open Space Plan (2020).

The park is a medium-sized park, approximately 2.3ha, including the semi-natural hill in the south. It is bordered by houses in the west, Craigton Place and housing in the north, the Community Centre, bowling club and outdoor facilities in the east and fields to the south.

Craigton Park consists of two 7-a-side football pitches, a skatepark, youth shelter, play area and a path from the north-east corner along the eastern boundary to the south-west of the park. Also, technically included, is the semi-natural greenspace on the hill in the south of the park, although this hasn't had any management for several years. Significantly, the park forms a 'community hub' together with the Community Centre adjacent to it, including the centre's MUGA facility, and the bowling club beyond that.

The West Lothian Shale Trail incorporates the park on its route from Winchburgh to West Calder, and follows the path through the park. The path leads to the Union Canal in the south-west corner of the park, which connects the park to a much wider blue-green network across West Lothian. As does the railway track to the east of the park.

Following the construction of the park path via the Shale Trail project, West Lothian Council has some money to make wider improvements to the park in 2021/22. Feedback from local stakeholders will inform the improvements and help to shape a longer-term vision for the park.



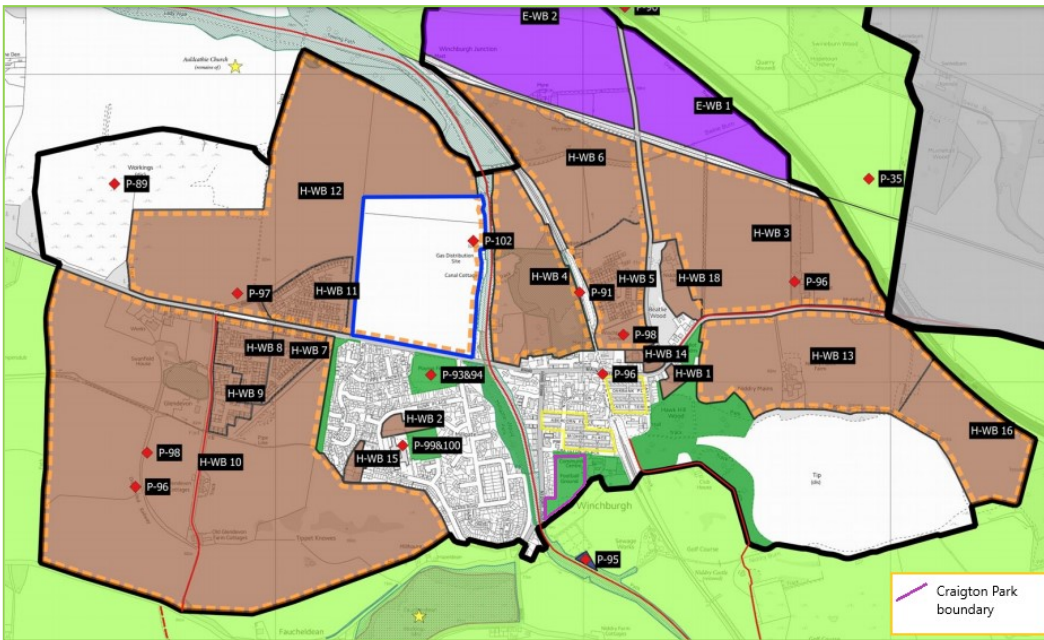
## Information gathering

Feedback from local stakeholders was gathered via an online survey. The survey period ran from 9<sup>th</sup> to 30<sup>th</sup> November 2020.

Emails were sent to all known stakeholders, including council officers, Winchburgh Community Council, Winchburgh Community Development Trust, Winchburgh Community Growing Group, Winchburgh Albion Youth Football Club, Winchboarders skate group, and local Councillors. 50 fliers advertising the survey were put through neighbours' doors around the park, and 5 posters were displayed in and around the park. The survey was also advertised through the council's Media team. A total of 47 local people gave their feedback altogether.



# Winchburgh Core Development Area and Masterplan

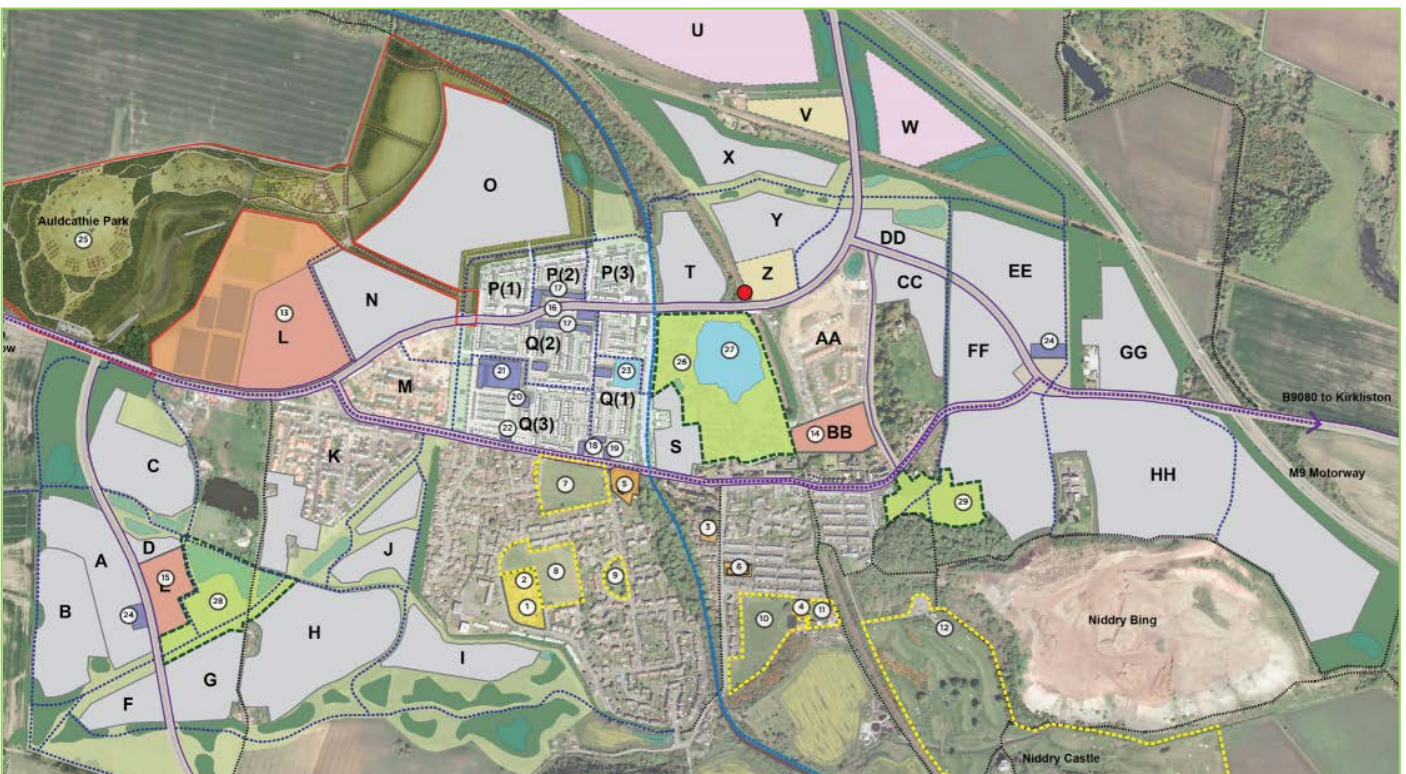


As Winchburgh is a Core Development Area in West Lothian, it is important that areas of open space for community use are planned into the new overall town structure and safeguarded. The WL Local Development Plan (2018) map shows the park as safeguarded for open space (left).

The 2018 LDP states that “The current supply of open space in the

existing settlements is not of a sufficient size and types to cater for the potential demand from new housing. Winchburgh / East Broxburn should include appropriate levels of each part of the West Lothian open space typology, including district parks, neighbourhood parks, local parks, sports areas, play spaces, green path corridors and amenity greenspace”. Under sites P H-WB 3 and H-WB 4, it is stated that “Provision of new parks and open space and enhancement of existing parks at Timmerjets/Millgate and Craigton Place and Community Centre Park required”

The approved Winchburgh master plan, prepared by Winchburgh Developments Ltd, shows the park as part of a planned network of public open spaces throughout Winchburgh (no.10 = Craigton Park):



## Feedback

### From Council officers:

- Permission from the landowners will be required for any further improvements to the park
- Investment specifically for play provision is due in 2024.
- Drainage along the Shale Trail path / south-eastern corner of the football pitch needs to be improved.

### From survey:

#### Name of the park

Almost all participants call the park Craigton Park or Craigton. Some people call it 'The Raws'.

#### Rate the Place

Participants were asked to rate the park as it currently is, using the council's Park Audit questionnaire. The results are shown in the chart below. 47 people participated in the scoring.

With a possible top score of 5 points for each category, it can be seen that Adaptability scores the highest. Above average scores are also given for Accessibility, Community Involvement and Attractiveness.

Roughly average scores are given for Quality of Materials, Network with wider area, Variety, Entrances/ boundaries, Maintenance and Safety.

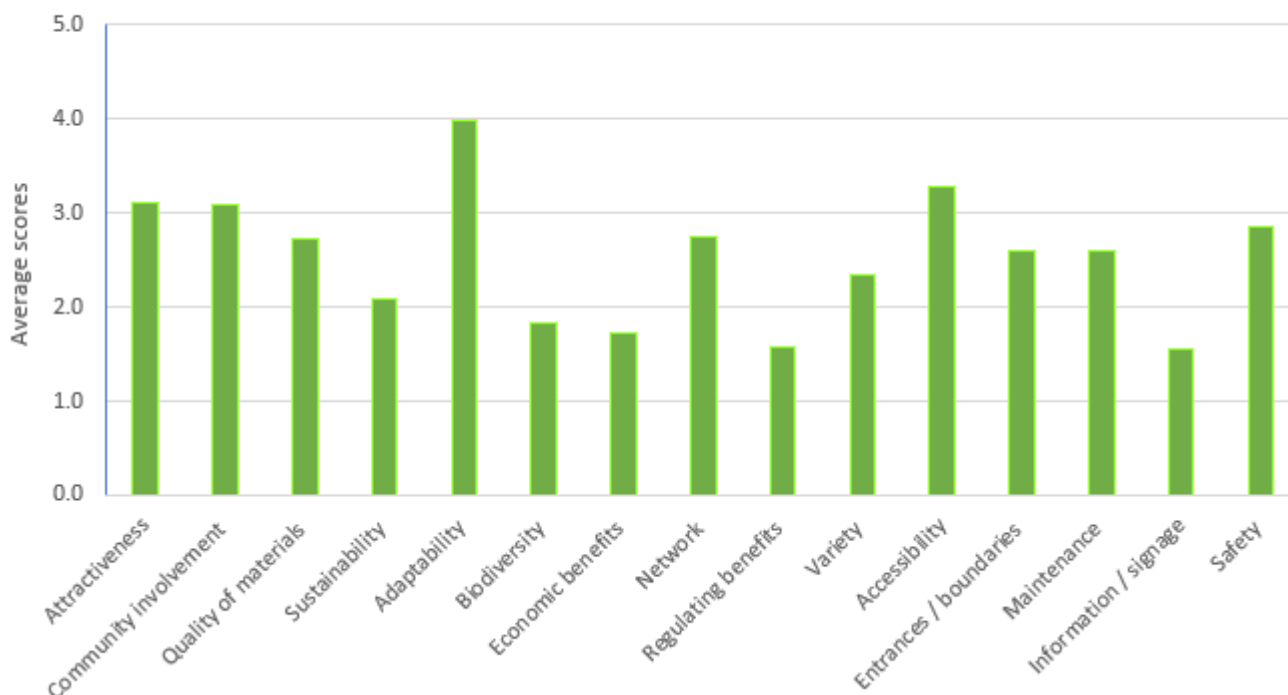
Categories with well-below average scores are: Sustainability, Biodiversity, and Economic benefits, with the lowest scores for Regulating benefits and Information/Signage.

These scores give us a clear indication of which themes within the park work well and which themes could be significantly improved.

The park's average community-rated score is 37, which rates at just below 'fit for purpose' (40 being the cut-off point). This is 8 points below the score rated through the council's park audit process, which is 45. This could be due to the time of year that the park was assessed, as well as the expectations of park users.

*Please see Appendix 1 for a more detailed description of the characteristics that were scored.*

**Rate the Place results - Craigton Park**





## What do people like best about the park?

When the feedback for this question is pasted into a 'word cloud generator', the resulting size of each word shows how often it is mentioned. The 'word cloud' for Craigton Park is shown here, allowing us to see at a glance which elements of the park are currently most valued:



Participants mostly list quite a few things that they like about the park, which indicates that people like the variety of things available in the one space, and several people mentioned that it's a good community space. The size of the park and the open space is very popular, followed by the location (heart of the community / close to home). In terms of single features, football is popular, along with the playpark and skatepark. People also like that it's well-used.







## Suggestions for improvements

The most popular low-cost suggestions for improving the park in the short term are to provide more plants and seating. These are followed by bins, maintenance, lighting, paths, play equipment, signage, fencing and drainage. Some people also suggested car parking improvements, more variety and better boundaries.

The most popular suggestion for longer-term improvement is flood lighting for the pitch and skatepark. This is closely followed by planting, improving the skatepark and enhancing the playpark. Other very popular suggestions are for more/better paths, car parking and more seating. Additional suggestions include a better design/layout with more to do, fencing, outdoor gym, drainage, more community involvement, more bins and better maintenance.

*All suggestions can be viewed in Appendix 2 at the end of this report.*





## Recommendations

Surprisingly, although the park scores about average for 'Variety', when people were asked to identify what they like about the park, they mostly listed several things at once. This suggests that there is a variety of things to do there, but it could be better designed and there are some key issues and areas of concern which should be addressed. Anything that can't be addressed now will be held on record for future park management / investment. By analysing the park scores and feedback from all stakeholders, recommended actions for improving the park are:

- 1) Planting
- 2) Flood lighting
- 3) Paths and path drainage
- 4) Signage
- 5) Seating and bins
- 6) Review of skatepark and playpark equipment
- 7) Car parking



As the park is not owned by the council, any further permanent structural improvements will need to be approved by the landowners.

Planting in the park would help to increase its score for regulating benefits and biodiversity. If edible plants are also added to the general planting, this will increase the park's economic benefits and the variety of things to there.

Lighting is the most popular single improvement suggested for the park. Installing lighting is costly and will also require further consultation with the adjacent residents. It will be included as an option for Capital spend in 2021/22, but a longer-term plan for lighting facilities may be necessary.

Drainage of the existing paths needs to be addressed, as they can be badly flooded after heavy rain. Further paths in the park (with associated drainage) would increase access for all around the park and provide some more structure to the park, beside which seating and bins can be placed and park entrances can be formalised with signage. Reopening access paths onto the hill can be considered, to add more variety to the park experience.

Feedback about the playpark and skatepark will be passed on the Play Team for consideration. Play provision in the park is due for specific investment in 2024. This could include some skatepark refurbishment.

There is already an informal car park in the north-east of the park. This could be more formalised to better cater for park activities and events.

## Next Steps

This report will be published on the council website [www.westlothian.gov.uk/parkinfo](http://www.westlothian.gov.uk/parkinfo) and plans for the park based on the recommendations from this report will be drawn up. Local people will be invited to vote on the final plan.

The 37 people who opted to join the park email list will be updated about the park improvements. Anyone else who would like to join the list can request to do so by emailing [becky.plunkett@westlothian.gov.uk](mailto:becky.plunkett@westlothian.gov.uk)



## Potential partners

Suggestions for local partners who may be able to help with the recommended improvements, include: Winchburgh Community Growing Group, Winchburgh Community Council, Winchburgh Albion Youth Football Club, Winchburgh Community Development Trust, Winchburgh Developments, Winchboarders (local skaters), Winchburgh Wombles, local youth groups, primary schools and the Winchburgh Gala Day Committee.

*A full list of all suggested partners can be found in Appendix 2 at the end of this report.*





## Appendix 1 – Rate the Place characteristics explained

No.	Measure	Some things to consider 'yes' answers = higher score, unless stated
1	Attractiveness	Is the park generally attractive? Does it have a consistent or unique character?
2	Community	Does the community help to make decisions about the park? Are there frequent community events? Is there evidence of community involvement?
3	Quality	Are features and facilities robust and long-lasting?
4	Sustainability	Is weedkiller used in maintenance? (lower score) Is every bit of grass cut short? (lower) Recycling bins on site? Are there signs that materials / resources are reused on site? (e.g. grass clippings on shrub-beds)
5	Adaptability	Could spaces within the park be changed easily to suit different uses over time?
6	Biodiversity	Are there different shapes, sizes and types of plants within the park? Do you regularly see different insects / birds / other animals in the park?
7	Economic benefits	Does anyone charge for activities or events here? Does anyone sell things here? Do people collect wood or berries? Do people fish? Do people grow food here?
8	Network	Is the park connected to other green areas nearby, or rivers/burns? Is it connected to walking/cycle paths?
9	Regulating benefits	Are there trees / shrubs / plants at different heights? (to filter air/water, soak up rainfall and store carbon) Are there areas that visibly hold water when it rains? Are there flowers to support bees and other pollinators?
10	Variety	Is there a good variety of things to do in the park? e.g. sport/ walk/ sit/ learn/ play/ watch wildlife / picnic/ cycle/ eat/ run / climb / socialise / walk dog / good views
11	Accessibility	Is the park easy to walk to and get around? Is most of the park accessible to buggies / wheelchairs?
12	Entrances / boundaries	Do you know you're in a park? Are entrances and boundaries well defined? Are they attractive?
13	Maintenance	Is the park well-maintained? Is there much litter, vandalism or areas of neglect? (lower)
14	Signage	Is it clear who looks after the park and how to contact them? Is there any information on wildlife/ history, etc?
15	Safety	Do children and older people regularly use the park? Can you see across the park? Are there areas that feel unsafe? (lower)

## Appendix 2 – All survey answers

### 1) What do you like best about this park?

#### Variety / community

- As a football coach with Winchburgh Albion I think the park is very good for training in the summer or during the day at weekends. I think it easily accessible and has an adequate range of facilities (football pitch, skatepark, astro 5-a side pitch, play park.
- Open, big and it has a small skate park, kids play park and large grass area
- The swings/slides are great, the skate park is great for older kids and the kick pitch gets used frequently for football coaching. It's where lots of community events happen eg gala day
- My sons football team use it for games and training, and it has a playground & skatepark that my kids love.
- Big football pitch, playgrounds, Kick Park.
- Great playpark, skatepark and gravel path easy to push the pram and well connected to the canal
- There's football pitches, a skate park and a small play park.
- ... and most days it is well used by local children and young people, You see families also using it with their dogs and playing football or using the skatepark.
- Its a large area, the football pitches are well used as is the park and skatepark. Lots of children and families and dog walkers are able to utilise the space.
- Good for local community, diverse uses.
- Having a children's play park and skate park makes it useful for all ages of children.
- This is our community park where all village events are held, it's is a great park for the kids football.
- It has a full size football pitch, kick pitch and small skate and play parks.
- That it's a community space. I live directly across from the park and have sadly seen it decline due to the human rubbish that's left at the kick pitch/swing park.

#### Location

- I like the Central location. Close to bowling club and community centre which is underutilised
- It's close
- It's in the heart of the community
- It is close to my home
- It's local
- Easily accessible to most people in the village
- I love how the park is closely connected to the canal but also the hill. Children can play in the park or climb the trees on the hill also.

#### Well used

- I like that this is a green space and a lot of people use the skate park and astroturf are.
- Nice green space well used.
- While not decorative the park is well used by children especially. This could be further improved and it would help if a small area became a car park as most children are dropped off and picked up or parents stay to watch or take part.

#### Size / open space

- Large
- I like the parks openness
- The wide open space
- Large open space that could accommodate anything community needs it to.
- I like the open space for walking
- Nice open space with lots of potential.
- The fact it it's big
- It is a large area for all children to play and has the space for further development. Winchburgh Albion football club use this park every week throughout the year to play games and train. We currently have over 100 kids playing for Winchburgh.
- It has some open space for children's sports activities
- Good open space for the area.
- It is quite a large area
- This is a good sized park - just needs a lot of improving with plantation, seats better play equipment
- It's a lovely big green area.

#### Football

- The kick pitch
- Its used by local football club. Also many of local children use skate park
- The football serving the community football club
- The football pitch and the open space available to children to play.
- It can accommodate youth football teams

#### Playpark

- Good equipment for children's playpark
- children's play areas
- It has a play park
- It has a small provision of play equipment.
- Excellent playpark

#### Skatepark

- The skatepark
- Skate park
- also has small area for skateboarding for older kids.
- It has BMX equipment

#### Other

- and the shrubs and trees on tongue hill encouraging wildlife
- The edge could be a more natural environment for bugs ect by planting it differently between the trees.
- It is generally well maintained but parts of the hill could be cut down, years ago you could walk up and along the top where you could see some great views.
- walking the dogs
- Nothing particularly
- The shale trail path offers a dry walking area!



## 2) Is there anything you don't like?

### Lack of interest

- Boring
- There is nothing other than the park and skate park
- Park is just an open space. No design to it or creative planting. No pathways or different bushes. Not very biodiverse.
- It's lack of character, seating and bins
- Lack of plants, flowers and trees. It is just a big bit of grass with a skate park on it.
- There are no flowers, or colourful plants.
- The only sport that can be played at the park is football. it would be good if other sports could be played there.
- It's not very well looked after, not up to date, nothing of interest to note - it's old and tired.
- There is not a lot in the park. It's not a park you would go for a walk in, you only walk there if you are visiting the small play park.
- The equipment is dated and not very big considering the surrounding field.
- Too small for size of the village not enough play equipment
- How it's misused and how there is not much to do
- Just the emptiness of the park
- It's not a decorative park and this could be looked at especially around the areas beneath the trees as above.

### Dog fouling / litter / bins

- Can be a lot of dog mess in the children's park area. A fence around the kids area would prove beneficial to avoid this
- Too much unpicked dog poo
- Dog mess all over grassed areas and rubbish in kids play park
- Too much dog poo
- Often a lot of litter around the skate park and sometimes broken glass in the metal shelter.
- There is a problem with dog poo.
- Main problem is the amount of dog waste. Stricter fines and more enforcement needed.
- lots of rubbish as no longer a bin at the park
- It is not served well with provision of bins
- Often litter in the playpark
- Also occasionally dog faeces.

### Pedestrian access

- It can be hard to push the pram from the road entrance all the way across to the play park as the grass can be long.
- No path down to park from top end and field is soaking.
- Lack of path
- Needs a path installed for walkers, prams, wheelchairs etc.
- As an o.a.p. it would be nice to have a path all the way around to walk with our grandchildren. The path would also be good for small children with small bikes. providing a nice space for gentle exercise for us.
- Would be good to have a walk way all the way around the park
- yes the hill used to be accessible for walks ,but over the years it has been left to be overgrown
- Hill behind Park is overgrown with nettles so can't be used.
- Inability to walk along tongue hill as there are now no longer any clear walkways.

### Skatepark design

- Skatepark surface
- Skate park design
- The skate ramp is dull
- Skatepark has been built wrong, It's dangerous and not fit for it's purpose.
- Skate area too small.
- The skatepark is not big enough for the amount of children and young people who use it or want to use it.

### Drainage

- and always floods
- The bottom left corner still floods which then covers both the footpath and the makes the football pitch unplayable. I understand drainage has been put in but this has obviously not

### Lighting

- Lack of lighting at skatepark
- The BMX equipment is not well utilized due to lack of light and could do with a little upgrade
- Poor lighting
- It is dark, we could use some floodlights on the football pitch so that the sports teams in the community could utilize the space in winter months.
- Lighting extremely poor at night therefore football pitch can't be used
- Lack of lights
- The Park hasn't light just the kickpitch. Now in winter you can't use it after 4pm
- The football pitch needs better markings or fences area This can only be used at certain time of the year due to no lighting.
- My son plays for winchburgh albion football club and the only problem is come winter time when the dark nights come in they can't play/train football as there is no lightning and the kick pitch is too small for his team to play plus when we're there watching them okay
- In winter the park has much reduced use due to no lighting anywhere. Without lighting the park can't be used for football or skating at the skate park which could be used to provide safe activities for the village youth in the evenings.
- The new path which was a welcome addition is not usable come 4 pm in winter as no lights and it passes by scrub land so no woman or girl should use. The lack of appropriate lighting makes it a haven for youths at night to be up to mischief.
- Local groups are unable to use the park almost half of the year due to lack of light
- no lighting at night

### Seating

- I think there is a lack of benches and picnic benches which would encourage both young and old to spend more time there either for a picnic or just relaxing on a sunny day.
- Seating areas
- Lack of benches, places to sit
- Lack of benches/picnic areas
- more benches or some picnic tables near the play area and skate park for supervision.
- no adequate seating.
- Seating around the path for us oldies to sit and watch and play with the grandchildren.
- A couple of picnic tables would be nice.
- there is nowhere to sit as there is only 1 bench in the top corner

### Parking

- lack of parking
- Limited parking
- It would be good to have the car park redone and perhaps additional parking near the play area.
- When events are on, which feels like almost daily at the moment, our street is just ridiculous for parking. I've found cars parking on the private drying green areas, cars actually parked over dangerous junctions in the street and right on the street corners - it's an extremely dangerous street to try to get in and out of when you're a resident. There are car parks at either end, but this has to be improved, due to, in particular, the football on a Sunday morning. it's dreadful and soul-destroying for those who are disabled, have small children or have to be in and out a LOT due to work (I'm a dog trainer and walker - I need to carry heavy equipment, sometimes the length of the street.
- Improve parking for football games so people don't have to park on Niddry Road

### Planting

- Would like more nature areas and different flowers/shrubs for more interest.
- Would be good to leave some areas to grow in summer months and create meadows to encourage wildlife and plants. Would be

worked.

- Poor drainage, one half of the football pitch floods.
- Muddy standing area for spectators at games.
- There are muddy areas after rain.

#### **Dogs**

- Dog owners allow their dog to run wild. Often through the park.
- The play park is not enclosed, so dogs that are exercised off the lead run into the play park, so I do not like using the play park there as my kids are scared of dogs.
- dogs running loose & dog mess in kids play park as no barrier to keep them out

#### **Safety**

- It doesn't always feel safe.
- Play park too far from houses for small children to be safe.
- It can be a bit eerie at night down the bottom of the park near the hill

nice to have planting in some areas, maybe a community growing area or orchard?

- The community has started up grow boxes but why doesn't the council start a flower bed area? This would make it look a lot more appealing but also promote bees and other wildlife.
- Better use of the space around the football pitch with perhaps some landscaping
- I think more could be done in terms of tidying up grass edgings, maybe putting in more shrubs, flower beds, trees

#### **Other**

- And expanding the play park to include more equipment.
- Pavilion that the kids have to get changed in, been there for as long as I can remember, such an eye sore
- Path at bottom is out onto a busy road
- No hard standing areas at pitches for spectators.
- It's uncared for. The council pretty much has the bare minimum.
- no definition on space
- It is not compatible with outdoor activity throughout the winter especially after school activity



### 3) List three low-cost things that you would do to improve this park, that could be done straight away

#### Planting

- More planting
- More flowers/trees/foilage
- Plant some flowers
- Plant flowers
- More planters with nice flowers to attract bees and other wildlife,
- More wildflowers along the edges
- Leave grass to grow where not needed to be cut in summer months
- Natural planting beneath the trees
- Planters
- Increased trees/plants/bushes to increase biodiversity of park
- Planting
- Natural meadow plants
- Community growing/ or decorative planting areas
- Planting shrubs
- Plant area
- Spring bulb border
- planting of some shrubs
- Flowers
- Plants, shrubs etc
- Some new plants/points of interest
- More planting in areas that are not used for football
- Plant bulbs & wildflowers
- Meadow planting

#### Bins

- More bins/dog bins
- Bins
- Provide more bins around the area to allow people to stop dropping litter.
- More bins
- Bin for rubbish
- More bins
- Another bin by skatepark
- Litter bin
- More bins around park including recycling
- Provision of bins to encourage use and prevent litter
- More litter bins (or more regular emptying of existing)
- Dog poo bins/bags
- Add more dog bins.
- New poo bins situated at regular intervals
- More litter bins

#### Lighting

- Floodlighting on pitches and path
- Lighting
- Flood lights on main pitch
- Lights
- Increases lighting for sports and safety when walking dogs.
- Proper lights in winter e.g. floodlights
- Improved lighting to utilise the area more fully
- Better lighting
- More lightning at the bottom of the park
- add floodlights
- Night lights

#### Play park

- More play equipment
- add a spider web for climbing
- Move kids play area
- Increase the size of the Skate park
- Paint the skatepark
- Extend the skatepark
- Increase size of skate park
- The small skate park area needs redone/enlarged
- Skate Park

#### Seating

- put in additional seating (benches)
- Benches near skatepark
- picnic benches
- Seating around pitch
- Seating
- More seats for the elderly
- Benches
- Additional benches
- More seating
- Benches
- Benches
- More benches and a picnic area for families to use.
- More seating
- Add picnic area with benches.
- Seating around the path for o.a.p
- More seating
- More community bench planters
- Put more benches at field side
- More seating for watching games.
- More benches for seating
- More benches for people to sit and have lunch etc.
- More seating for parents

#### Maintenance

- cut Hill foliage bk to allow access
- Cut grass more often
- Regular maintenance /litter clear
- Tidying up the hill in the background
- Outdoor basic maintenance
- general tidy up of area near five-a-side pitch
- Cut back a walkable pathway through the hill
- Proper maintenance
- upkeep don't leave grass just lying when cut
- Improved maintenance
- Paint metal shelter
- Ensure litter is collected regularly

#### Paths / pedestrian access

- Footpaths in the woodland area, kids love to adventure there
- Path around kick pitch to stand and join up. With new shale trail path
- Pathways
- Turn some of the woodland area at the back into a proper woodland trail.
- Make the path all way around
- Lay concrete path rather than stone so that grit doesn't end up all over skate park
- Walkway all the way around the park
- Pathway to the park along the back of the houses
- Foot Paths
- Paths

#### Signage

- Improving the signage
- Proper signage throughout the village to direct people to the park
- and signage
- No dogs signs
- More signage for the park
- Nice signage
- signage of the park
- Get involved with Winchburgh Wombles to erect signage regarding this being space for all, so please keep it tidy.

#### Drainage

- Drainage in the grass
- Better drainage as when it has been raining heavy the park becomes a pond.
- Improved drainage on sports pitches

#### **Fencing**

- Fence around kids park
- Fence around play park area
- Fence off kids play park with signage to keep out dogs
- Fence to separate walking greens from park

#### **More variety**

- Expansions
- more things in park

#### **Boundaries/entrances**

- Refreshed boundaries
- Improve border

#### **Car park**

- Designate and sign car parking
- A small car parking space for safety

#### **Other**

- Campaign/inspect on the human mess after each event that happens to catch people and find them.
- Stop cars from traversing over grass areas
- Mark football pitch
- Toilets
- Café
- Hard standing areas for spectators in all areas

### **4) What three changes would you make in the long term that would have the biggest impact?**

#### **Lighting**

- Floodlighting for pitches to use all year round
- Lighting
- Floodlights for the sports field
- Flood lights on main pitch
- Floodlights at football pitch
- Floodlights
- Floodlights for community football
- Increases lighting for sports and safety when walking dogs.
- I would like to see floor lights at the football park to allow all seasonal play. This would also allow for winter training to be held there for the kids.
- Flood lights
- Lighting and floodlights
- Lighting at night
- Improved lighting
- More lighting
- floodlights so the skatepark and football pitches could be used throughout the winter giving children and adults more opportunities to keep fit, socialise in a safe environment and as a result possibly lower antisocial behaviour and improve mental wellbeing
- Lighting on the skate park
- New lighting
- Street lights
- Lighting
- Improved lighting
- Night lights

#### **Skatepark**

- Get rid of current skatepark build new multi functional skatepark
- Bigger skatepark
- Skatepark
- A better skate park
- Extend skate park
- Skate park
- Bigger skate park
- Better skatepark
- Skate Park
- Larger skate park
- Extend and improve skate park
- I would like to see the skate park extended and skater provided a much larger area to skate.
- Bigger skatepark
- Larger skatepark set further into park
- Bigger skatepark
- Bigger skate park
- New skate park

#### **Planting**

- Wildlife garden
- Plant trees
- More big trees
- Add a wildlife corner (like Jupiter urban woodland gardens at Grangemouth, using recycled materials)
- Sensory garden
- more trees
- Add attractive planting - colourful flowers, shrubs
- Increased trees/plants/bushes to increase biodiversity of park
- Wild flowers (low maintenance)
- Planting
- Make it prettier with plants
- Community growing area like raised beds or allotment type area
- Planting
- Enhanced biodiversity
- Planting trees, shrubs, etc.
- Plant bulbs all the way around
- More colourful/natural planting
- more flowers, shrubs, etc
- Landscaping

#### **Play park**

- Expansion of children's park, potential space for slides within hill surround
- Expand park
- Larger play park
- add sunken trampolines(my daughter dream)
- Better play park facilities like those in Angus area wooden structures
- Improved play park equipment
- Bigger play park
- Refreshed children's play area
- Refurbished Equipment
- Better play Park facilities
- More equipment
- more swings
- I would like to see the play area at the bottom of the park to also be extended and filled with more equipment for the kids to enjoy.
- New Equipment
- Add in a climbing frame/slides like the helix park in falkirk

#### **Car parking**

- Better car parking/ wider road
- Increasing car parking down at the hard standing.
- Encourage people to park on Niddry Road and come in that entrance to stop the nonsense on our street.
- Install better carparking
- Car parking facility
- Additional parking
- Parking facilities
- Car park

**Pedestrian access**

- New foot paths
- Have a path round the park for buggies/wheelchairs
- Pathways through the park
- Better path
- Walking routes
- path along the back of the houses
- paths
- Pathways
- Install footpath
- Walkway on Tongue hill with something like a fairy trail, boards with interesting facts about the trees, shrubs, area, etc, wooden sculptures, bee friendly areas

**Seating**

- picnic benches and benches to encourage people to spend longer in the park
- Seating
- Picnic tables
- Seating for the elderly
- Seating
- Nice seating areas for viewing sports/children playing
- More seating

**Community engagement**

- More community engagement via local groups to encourage maintaining rubbish and dog mess free
- Hold events like kids sports days, fetes, football competitions etc in the park to encourage community interest
- More community information - noticeboards etc...

**Bins**

- Litter bins
- Litter cleans
- More waste bins

**Maintenance**

- Better clearing up of dogs dirt
- More regular maintenance

**Design**

- New layout, more interest while keeping the sports area
- Facilities for games
- better facilities
- More to do

**Fencing**

- Fence park in
- Fence around the play area
- Large mesh fence to stop footballs going on the road and washing greens

**Outdoor gym**

- Add some outdoor exercise equipment for older kids/ teens/ adults
- Some outdoor fitness machines for adults.
- Outdoor gym/exercise area for adults while children are doing activities

**Drainage**

- get to the bottom of the flooding issue even if it means raising the pitch in the bottom corner so all the water does not automatically run there.
- Better drainage at the southeast end of the park
- Improved drainage on sports pitches

**Other**

- fishing loch/hole
- Better safety provision
- Pavement on roadside to entrance and Fitness/ running track
- Larger/2nd kick pitch
- Bicycle stands to lock bikes up to.
- Shelters for spectators
- Ensuring cars cannot traverse parts of the park
- Utilise woodland for trails, install new paths and link to canal path
- Public toilets
- New pavillion
- Have a cafe onsite



**5) Which local groups could help to put your ideas above into action? (Please name them e.g. 'Hillside Primary Parent Council')**

- Winchburgh growing community
- WINCHBURGH GROWING GROUP (THE GROUP THAT INITIATED ALL THE PLANTERS AROUND THE VILLAGE)
- Winchburgh growing group
- Winchburgh Community Growers
- Winchburgh growing group
- Winchburgh Community Growing Group
- Winchburgh growing group
- Winchburgh growing group
- Community growing group
- Community Growers
- Winchburgh community growing group
- Winchburgh growing group
- Winchburgh growing group
- Winchburgh growing group
- Community Growing Group
- winchburgh community growing
- Winchburgh growing group
- Winchburgh Community Growing Group?
- Winchburgh community council
- Community council
- Winchburgh community Council
- Community Council
- Winchburgh community council
- Community Council
- Community Council
- Winchburgh Community Council
- Loack skateboarders meet at skatepark every Tuursday night to give kids free lessons and provide equipment
- Winchburgh skate boarders
- Winchboarders
- The Winchbaorders, the local skate crew who meet on a Thursday evening and other times at the weekend.
- Winchburgh wombles litter pick regularly
- Winchburgh Wombles
- Winchburgh wombles
- Winchburgh wombles
- Winchburgh Wombles
- Winchburgh Wombles
- youth clubs
- Local scouts/Cubs/beavers who meet in community centre next to the park
- Youth clubs
- Youth groups, all
- WINCHBURGH ALBION YOUTH FOOTBALL CLUB
- Winchburgh Albion football club and the scouts are regular users of the park. Winchburgh Albion has hundreds of kids accessing it weekly.
- Winchburgh Albion football club
- Winchburgh Albion Football team
- Winchburgh Albino Football Club
- Winchburgh albion
- Winchburgh Albion Football Club
- Winchburgh Albion football club
- Winchburgh albion FC
- Winchburgh is a fast growing community and I am sure there would be locals will to help out. Winchburgh Albion Football Club use this area every week and would be happy to help in any way possible to make these change happen.
- Youth Football T eam
- Football groups
- Winchburgh community development trust
- Winchburgh Development Trust.
- Winchburgh Community development Trust.
- Winchburgh Development Trust
- Winchburgh development group
- Winchburgh Development Trust
- Winchburgh Development Trust
- Winchburgh developments
- Winchburgh developments
- Winchburgh Developments
- Winchburgh Development
- Both local Winchburgh Primary Schools
- Winchburgh Primary School - for planting
- Winchburgh Primary School
- Galaday committee
- Winchburgh Gala Day Commite.
- local landscapers
- Urban landscapes for planting and paths
- West lothian council
- Wlc for extension to skate park
- West lothian council
- West Lothian Council
- Louise Hanlon's afternoon teas for cafe
- local netball team
- Winchburgh Village Group (FB)
- Sainsbury's
- Coop