

St John Ogilvie RC Primary School Improvement Plan

2023/2024



Courage

Relationships

Relevance

Values

Factors Influencing the Improvement Plan

School Factors

Addressing Action Points identified in school's Self Evaluation procedures
Cluster Improvement Priorities
Equity Priorities

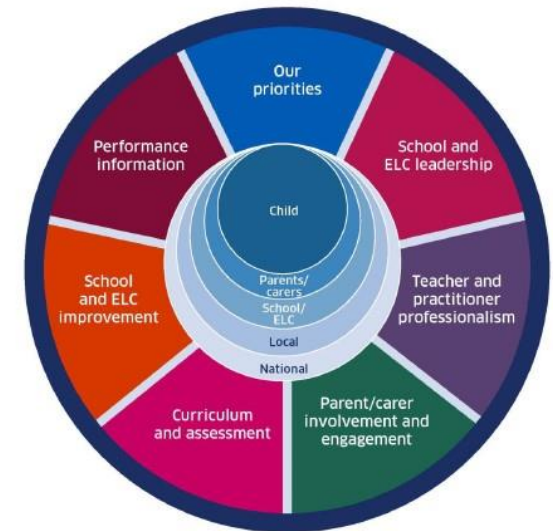
Local Authority Factors

Moving Forward in Your Learning Guidance
Literacy and Numeracy West Lothian Priorities, HWB
Raising attainment, including closing the gap ([West Lothian Raising Attainment Strategy](#))
Transforming Your Council
[Corporate Plan](#)
Education Services Management Plan
West Lothian Parental Involvement and Engagement Framework
Equity Team and additional allocations, Pedagogy Team

National Factors

Coronavirus (COVID-19): Guidance on reducing the risks from COVID-19 in school
Moderation Cycle and Assessment
National Improvement Framework / Scottish Attainment Challenge / National Improvement Hub / Raising Attainment for All
Pupil Equity Funding/Equity Audit
How Good is Our School? 4th Edition and How Good is Our Early Learning and Childcare?, National Standard for ELC, Quality Framework for day care of children
Getting it Right for Every child (GIRFEC)
Curriculum for Excellence Refresh
Realising the Ambition
Developing Scotland's Young Workforce
Child Protection Procedures
GTCS professional standards and professional update 2021
Achieving Excellence and Equity 2022: National Improvement Framework and Improvement Plan
Putting Learners at the Centre: Towards a Future Vision for Scottish Education, The Ken Muir report, March 2022.
UNCRC
Presumption to provide education in a mainstream setting 2019

Support for Learning: All our Children and All their Potential (ASL Review) 2020



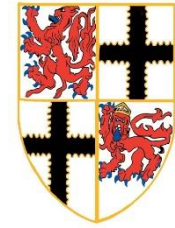
Courage

Relationships

Relevance

Values

Born for Greater Things



Vision Statement

Working together as a vibrant learning community of faith and friendship, where everyone is valued and respected.

Aims

It is our aim that you will see and hear:

- Happy and healthy children who have the chance to thrive in a nurturing environment.
- Quality learning experiences which motivate and challenge us.
- Opportunities within our community for everyone to be leaders of learning.
- Strong, positive partnerships across our wider school community.
- Participation in prayer and worship, where we grow in faith by trying to live like Jesus every day.

Our Shared Values



Courage

Relationships

Relevance

Values

Learning, Teaching and Assessment

- A coherent curriculum
- Clear focus on Literacy, Numeracy, Health and Wellbeing and RE
- Focused smart planning of experiences and outcomes across the curriculum
- Enhanced Outdoor Learning with clear skills progression
- Flexible and adaptable planning to include opportunities for Pupil Led learning
- Openness to new approaches to improve outcomes for learners
- Bespoke SJO planners in core areas based on WLC Progression Planners
- Clear Rights of the Child focus across learning
- Developing skills for learning, life and work

Connection with the Wider Community

- Parish links – Fr Simon, SVDP, Knit and Natter, Legion of Mary
- Parent Council
- Parent and Friend Association(PFA)
- St Margaret's Academy Cluster Schools
- Educational Support Partners – Speech and Language Therapy, Children and Young People Team, Educational Psychology, Outreach Services
- Active Schools
- West Lothian Drug and Alcohol Service
- National Youth Choir of Scotland
- West Lothian Football Academy



Opportunities for Personal Achievement

- School Captains, House Captains/Vice Captains
- Pope Francis Faith Award
- Lead Learners
- Hot Chocolate Friday
- Star Writers
- School Buddies (to ELC) and P7 Buddies
- JRSO
- House Point System
- Recognition Walls
- Reading Champions
- John Muir Award
- Seesaw and Teams Portfolios
- Sporting Festivals
- Euro Quiz

Decision Making

- House Captain/Vice Captain Meetings
- Pupil Voice
- House Group Friday Activities
- Vertical committees – Rights Respecting Schools, Mini Vinnies, Sports and Health Champions, 1+2 Curus, Tech Team, First Minister's Reading Challenge
- Class Assemblies
- Class performances
- Enterprise Activities
- Outdoor Learning
- Home Learning through Seesaw and MS Teams



Courage

Relationships

Relevance

Values

Contextual Data Analysis and Rationale for 2023-2024 School Improvement Plan

Background

St John Ogilvie RC Primary School serves the communities of Livingston North (Eliburn, Deans and Knightsridge). The school roll is currently 3347 pupils over 13 classes.

The staff team is comprised of a Head Teacher, Depute Head Teacher, 1 Principal teacher, 20 teachers, 11 pupil support workers and 2 administrative assistants. In Woodlands ELC the staff team is comprised of an Early Years Officer, 6 EY practitioners (mix of full time and part-time), 1 full-time pupils support worker and 2 part-time pupil support workers.

The school population is marked by a diverse range of ethnic and social backgrounds. The school community enjoys strong links with the local parish of St Peter's in Carmondean and benefits from highly effective parental and community partners. St John Ogilvie is part of the St Margaret's Academy cluster of schools. These partnerships are also evident in the school's strong and collaborative culture.

Data

Attainment Data

Overall attainment % (whole school)	Quintile 1	Quintile 5	Boys	Girls	COS 1 % School and ELC	COS 2 % School and ELC	COS 3 % School and ELC	
Literacy					83%	12%	5%	
Overall	84.2	80.48	88.79	84.22				85.31
Reading	88.42	86.48	92.76	87.53				86.28
Writing	84.71	80.48	89.63	84.22				86.15
L&T	93.33	92.35	98.41	93.18				93.62
Numeracy	90.21	84.45	96.38	92.23				89.31

Wellbeing

	Safe	Healthy	Achieving	Nurtured	Active	Respected	Responsible	Included
Green	93.73%	89.18%	84.97%	91.13%	92%	80.39%	92.75%	88.16%
Amber	6%	10.55%	14.76%	7.69%	7.49%	17.78%	6.55%	10.04%
Red	0.27%	0.27%	0.27%	1.18%	0.51%	1.32%	0.7%	1.8%

a)

What are our improvement priorities?

A key priority for this session will be a continued focus on improving the emotional and mental wellbeing of our learners. We will continue to offer nurture for our youngest learners through identified groups and the refocussing of outdoor nurture will provide support for learners in the upper school. We will use termly wellbeing check ins to support planning and identify areas of focus in Health and Wellbeing. We will work with cluster colleagues to continue to promote the Inner Wings. This will be used across the school, in a structured way to support confidence and resilience building for all learners but with a focus on developing a sense of self-worth in girls and an understanding of self-belief in ability for boys.

Attainment in writing will remain a focus across all stages with particular intervention planned at P3 and P4. We will build on the work done to create opportunities for moderation in writing. This will be supported by our literacy SIP group and our cluster schools. In numeracy, we will support class teachers to ensure consistent approaches through creation of a numeracy pedagogy toolkit. We have allocated specific Support for Learning teaching time for attainment support, both for individuals and groups. This will be for universal and targeted learners.

We will further revisit our outdoor learning programme, ensuring a focus on the development progressive skills which are transferable across learning. All staff have access to bespoke planning documents to support delivery.



Courage

Relationships

Relevance

Values

St John Ogilvie RC Primary School School Improvement Planning for Ensuring Excellence and Equity

School priorities	Proposed actions	Timescale	Measures of Success
<p>Improvement in all children and young people's wellbeing:</p> <p>Children's emotional well-being is improved through targeted interventions to support mental health and to build confidence and resilience</p>	<ul style="list-style-type: none"> Embed progressive HWB programme including planned delivery of Zones of Regulation, Treehouse, Inner Wings and Emotion Works. Revise outdoor learning and pilot new progressive planner across school. Continue to employ One Trusted Adult approach to support wellbeing Increase opportunities for Pupil Voice through vertical house group activities. Continue to work towards achievement of our Gold RRSA award with planned assessment by December 2023. 	<p>From August 23</p> <p>From September 23</p> <p>Ongoing</p> <p>From September 23</p>	<ul style="list-style-type: none"> Almost all learners will report positively against wellbeing indicators with 5% reduction of pupils reporting red. Staff confidence in delivering outdoor learning will increase as a result implementation of whole school progression. Achievement of Gold RRSA
<p>Raising attainment for all, particularly in literacy and numeracy(universal):</p> <p style="color: red;">Children's learning experiences are improved through the consistency of learning and teaching approaches within reading and writing.</p> <p style="color: green;">Children's learning experiences are improved through the consistency of learning and teaching approaches in numeracy across the school.</p>	<ul style="list-style-type: none"> <li style="color: red;">Streamline update and refresh SJO Literacy Toolkit to align with current resources. <li style="color: red;">Continue to support PM writing methodology across all stages <li style="color: red;">Work towards achievement of silver level Reading School award. <li style="color: red;">Participate in a Literacy focussed transition programme across cluster schools linking critical reading & writing skills approach led by St Margaret's. <li style="color: green;">Create a bespoke Numeracy and Maths pedagogy toolkit to support coherent and progressive teaching and learning across the school. <li style="color: green;">Further develop specific support for learning within numeracy for targeted learners. 	<p>From September 23</p> <p>Ongoing</p> <p>Ongoing</p> <p>From April 24</p> <p>From September 23</p> <p>Ongoing</p>	<ul style="list-style-type: none"> <li style="color: red;">Refreshed Literacy Toolkit will be created for use across school. <li style="color: red;">Attainment in writing to increase across the school with a focus on Q1 learners <li style="color: red;">Achievement of silver Reading School Award <li style="color: green;">Attainment in numeracy across the school to increase with a focus on Q1 learners.
<p>Tackling the attainment gap between the most and least advantaged children (targeted):</p> <p>Children's attainment will improve as a result of planned interventions in literacy, numeracy and health and wellbeing (for targeted learners).</p>	<p><i>'All West Lothian schools are committed to continuously developing their approach to ensure equity and tackle the poverty related attainment gap. Each school's PEF Summary provides an overview of their approach and an outline of how Pupil Equity Funding is being used to provide a range of universal and targeted approaches and interventions. Please follow this link SJO PEF Planning Tool to view our PEF Summary and find out more about our use of Pupil Equity Funding.'</i></p>	<p>From August 23</p> <div style="text-align: center;"> </div> <p>September 24</p>	<p>Documented in PEF Plan</p>
<p>Developing in Faith Theme - Promoting Gospel Values</p> <p>Children's learning will be enhanced by developing their understanding of Gospel Values and how to apply them to life.</p>	<ul style="list-style-type: none"> Implement new Diocesan planners including God's Loving Plan across the school. Undertake a review of our Vision, Values and Aims in partnership with all stakeholders. Participate in the Child Consecration Journey for P5 learners Plan school event to celebrate the multi-faith and diversity of our school community. Develop strong working partnership with new Parish Priest. 	<p>From August 23</p> <p>April 24</p> <p>September 23</p> <p>From January 23</p> <p>Ongoing</p>	<ul style="list-style-type: none"> All staff will plan for RE using new planning formats Refreshed VVA will be produced. All P5 learners will participate in planned prayer month. Pupil knowledge of OWR will increase supporting relationships and tolerance for all faith (and none).



Courage

Relationships

Relevance

Values

<p>Improvement in employability skills and sustained, positive school leaver destinations for all young people:</p> <p>Children will benefit from a rich curriculum that offers varied opportunities to develop skills for learning, life and work.</p>	<ul style="list-style-type: none"> • Review opportunities for the celebration and recording of the wider achievements of pupils • Creation of a format to record and share wider achievements. • Introduction of celebration assemblies for wider achievement. • Continue to develop our strategy for play in P3. 		<ul style="list-style-type: none"> • SJO strategy for recording of wider achievement produced and piloted. • Quality Improvement activities will evidence consistent opportunities for play across learning in P3. • Pupil wellbeing questionnaires demonstrate an increase of 5% for active and included indicator.
--	---	--	---

Each improvement priority is underpinned by placing the human rights and needs of every child and young person at the centre of their education.



Courage

Relationships

Relevance

Values