

Community capacity and cohesion

challenges

Community capacity and cohesion

Community capacity and cohesion priorities from community consultation, statistics, profiling and mapping of services and organisations



Communication between organisations



The capacity to support vulnerable groups in evenings and weekends



Collaborative practice



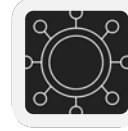
Community links



Difficulty getting through council reports 85 pages—summary document



Expectations of patients in the social



Lack of good quality hub



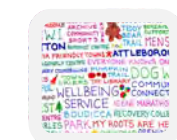
Not enough involvement from younger sections of the community



Improvement in partnership working



Services fire fighting due to social



ABCD mapping



Craigsfarm, promotion, branding, marketing required



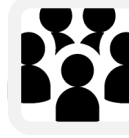
Neighbours and issues around that



Sound and safe place to work from



Potential competition between organisations and services from individuals and resentment between agencies and active



Need to engage with the community (*schools*)



Not engaging those that may live in Craigshill work elsewhere and ten not to utilise local



Venues to deliver parent education / adult learning



Robust system to work with those that don't engage (culture change, setting the



Access to the daisy and or venue in Craigshill



Unaware of everyone's services and what everyone

Space for community art within the practice

Unable to have a place to hold classes meetings, events in a safe welcoming place for our most vulnerable tenants and to our wider community

Bigger premises to work from

Engaging with schools, nurseries and the Daisy—GP



Attracting the more vulnerable groups to attend parents



Community capacity and cohesion

- Litter, bins and dog fouling
- Streets, Forth Drive & Letham Primary School
- Tired buildings and pathways
- Antisocial behaviour drinking, drugs, youths
- Lighting
- services feel they are just treading water
- Organisations not talking to one another
- Sharing what's going on
- Coordination of activities
- Safe place
- Residents involvement in community



Litter, bins and dog fouling

Key Issues /needs identified:	
Current position:	Outcome: To improve the streets, and spaces of buildings, underpasses, roads, green areas in order to improve residents overall health, mental health and well being.
Baseline evidence and measures	Local Plan outcome indicators Short term: community involvement Medium term:
How this fits into:	
The Local Outcome Improvement Plan: We live in resilient, cohesive and safe communities. We live longer, healthier lives and have reduced health inequalities.	
WLCPP Anti poverty strategy 2018-23 'Taking Action for Change'	
<ul style="list-style-type: none"> • Targeting services to reduce inequalities • Shifting resources upstream to deliver preventable measures • Ensuring that we obtain the maximum impact for our expenditure 	



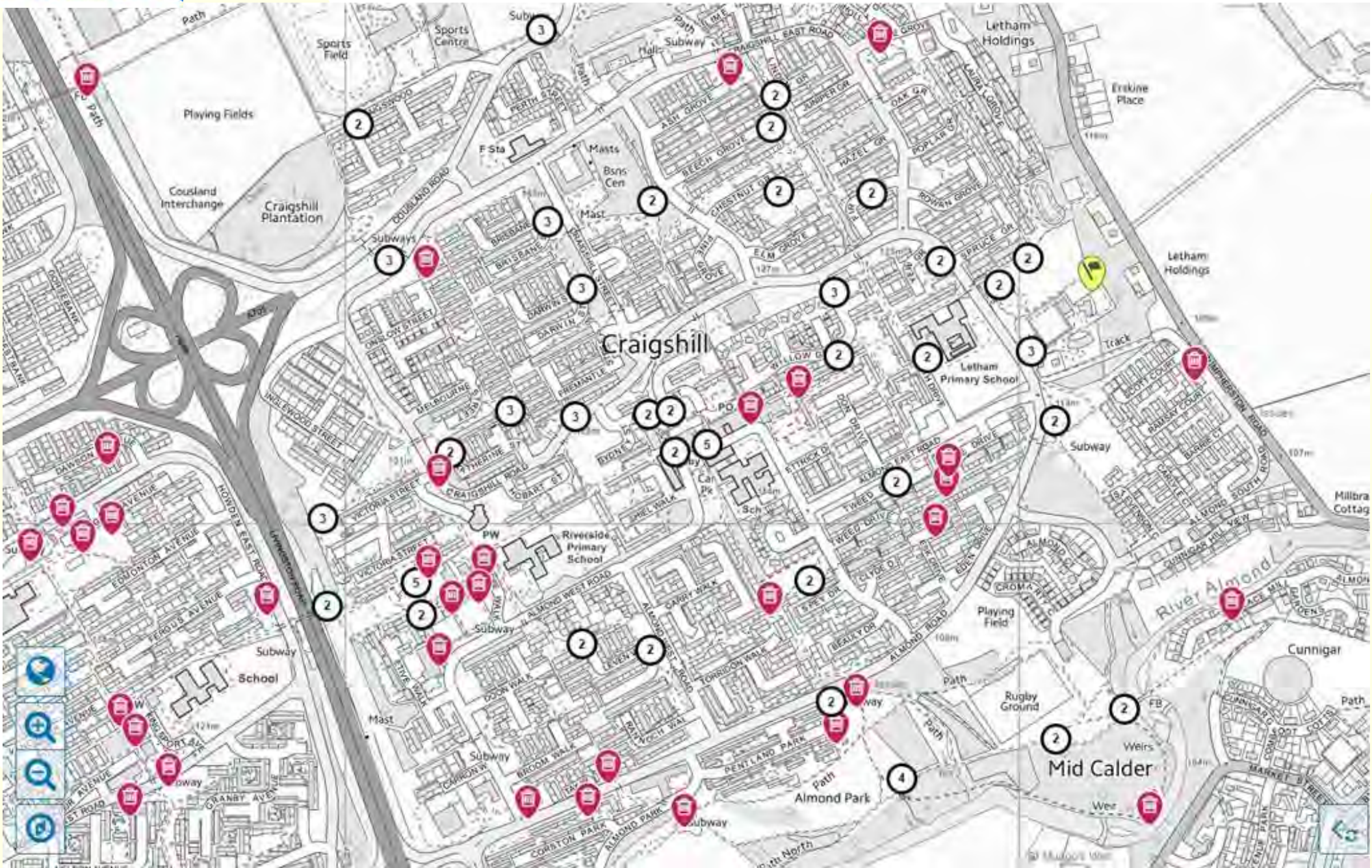
Bins, dog fouling and litter

Outcome required	What do we need to do	How are we going to do it	What do we need (resources) to do it	Who is going to do it	Timeframe	How will we know we are succeeding? outcome indicator/outputs
No litter or dog fouling on the streets	Bins usage maximised and emptied accordingly	Get map of where bins are located and what kind	Maps	Reg officer/ NETS	December 2018	Maps produced
		From map find out how often bins are emptied				
No litter or dog fouling on the streets	Education in place on litter and dog fouling	Work with community to identify if bins on maps are correct - audit	Maps and Volunteers	/green space group/ Craigsfarm/young people/dog walkers/ school walk/ walk to services and facilities	May 2019	Reg group and volunteers verified and audit bin locations and how often they are emptied
		Identify from community bin hot spots	Maps from street lights			Reg group working with dog walkers to identify popular dog walking routes - seasonal
		Lighting maps	Engagement with dog walkers			Reg group working with community to identify main walking routes through the area – seasonal
		Work with community to identify dog walking routes seasonal	Street lighting officer			
		Main routes, hot spots	Walking routes, cycling routes			
		Main pathways				
		Work with enforcers on an educational package				

Bins, dog fouling and litter

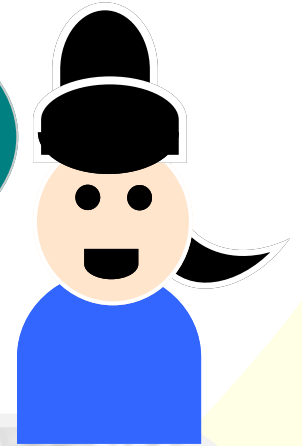
Outcome required	What do we need to do	How are we going to do it	What do we need (resources) to do it	Who is going to do it	Timeframe	How will we know we are succeeding? outcome indicator/outputs
No litter or dog fouling on the streets	<p>Develop an organic model of supporting and promoting residents take positive action on litter</p> <p>Litter picks</p> <p>Develop early intervention prevention models</p>	<p>Electronic road signage to remind drivers of littering and fly tipping</p> <p>Regular community litter picks through the area</p> <p>Promotion in advance of area to be done, leaflet through doors, FB campaign, local award for best street</p> <p>Link better with community activity ie west Lothian litter pickers</p> <p>Electronic signage on road signs prevention message</p>	<p>Arrange meeting with Jason Wilcox</p> <p>Message roads signage WLC</p>	<p>Reg officer/NETS/Roads</p> <p>Com Council/NETS/REG/</p> <p>Com Reg</p> <p>Com Reg</p>	<p>April– May 2019</p> <p>April 2019</p>	<p>Clear signage through Livingston on litter and fly tipping displayed</p> <p>Regular coordinated litter picks throughout hot spots of Craigshill</p> <p>Meeting undertaken and fed back at Green-space group</p> <p>Electronic Road signage campaign</p>
No fly tipping						

Mapping: bins



Action: bins

We ran a campaign through the greenspace group to ask residents and people that use the spaces to take a photo of the bins as they are going about their business



You said, Let's do!

Let's talk Bins!

In a recent community survey public bins, litter and dog poop were the top concerns for Craigshill.

Help us make sure we are best using our public bins.

We'd like to hear from you whilst out walking the dog, jogging, on the school run, playing or en-route to work.

Take a photo of the bin on your journey, saying:

- time & location
- and if you think it is in the best place and why

Upload the photo and info to the email below and help us help you

welovecraigshill@gmail.com

Get snapping and lets get this right!

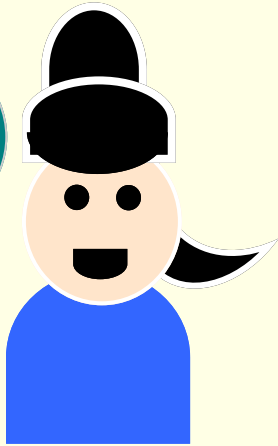
This survey is being undertaken by the Craigshill Action Group. For more information please contact Lesley Keimán WLC Regeneration Officer. lesley.keiman@westlothian.gov.uk

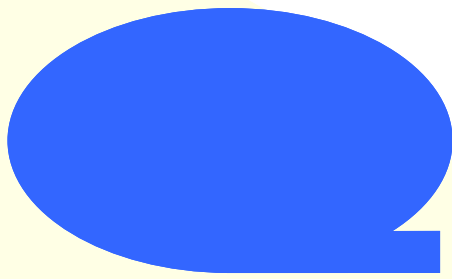




Action: litter picks

We organised local litter picks in advance of community events .





Streets, Forth Drive and Letham PS area

Key Issues /needs identified: Forth Drive, Flats area, dampness, antisocial behaviour, litter, fly tipping, dog fouling, gardens, shrubbery overgrown, security of flats, flats overall maintenance, evidence of drug use, bin issues, dog poo trampled on feet into playgroup

Current position:

The flats have a number of landlords and mainly private rented. Building maintenance is required to secure buildings on doors and prevent individuals and bulky items, which in one block has already resulted in a fire. Identified drug use in another stairwell and the electrical box exposed. Guttering and some pipe work require maintenance

Outcome:

Baseline evidence and measures

Local Plan outcome indicators

Short term:

Medium term:

How this fits into:

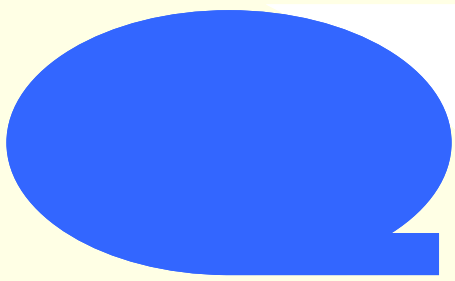
The Local Outcome Improvement Plan: We live in resilient, cohesive and safe communities. We live longer, healthier lives and have reduced health inequalities.

WLCPP Anti poverty strategy 2018-23 'Taking Action for Change'

- Targeting services to reduce inequalities
- Shifting resources upstream to deliver preventable measures
- Ensuring that we obtain the maximum impact for our expenditure

Streets, Forth Drive & Letham PS area

Outcome required	What do we need to do	How are we going to do it	What do we need (resources) to do it	Who is going to do it	Timeframe	How will we know we are succeeding? outcome indicator/outputs
Communities are organised and have capacity to work together to address common themes and priorities	Engage residents Set up a residents association	Forth Drive: Work with the residents and tenants to identify need Work through Aims and objectives, constitution Identify Key partners		Almond housing Residents/tenants Landlords Craigshill Community Council Youth Action Project		Constitution in place Regular meetings held Agreed Actions being undertaken and delivered
	the landlords working together to improve the security and care and maintenance of the flats	Work with the landlords to address maintenance and security issues		WLC, Landlords registrations, environmental health		
		To work on a solution to the overflowing and unsightly bins that looks onto Letham Primary School in Forth Drive	Budget WLC Agreement on land from Almond Housing	Forth Drive tenants association WLC Waste services		Communal bins are in situ, maintained and used appropriately



Tired buildings, pathways and unkept hedges

Key Issues /needs identified: care and maintenance	
Current position:	Outcome:
	Local Plan outcome indicators Short term: Medium term:
How this fits into: The Local Outcome Improvement Plan: We live in resilient, cohesive and safe communities. We live longer, healthier lives and have reduced health inequalities.	
WLCPP Anti poverty strategy 2018-23 'Taking Action for Change' <ul style="list-style-type: none">• Targeting services to reduce inequalities• Shifting resources upstream to deliver preventable measures• Ensuring that we obtain the maximum impact for our expenditure	

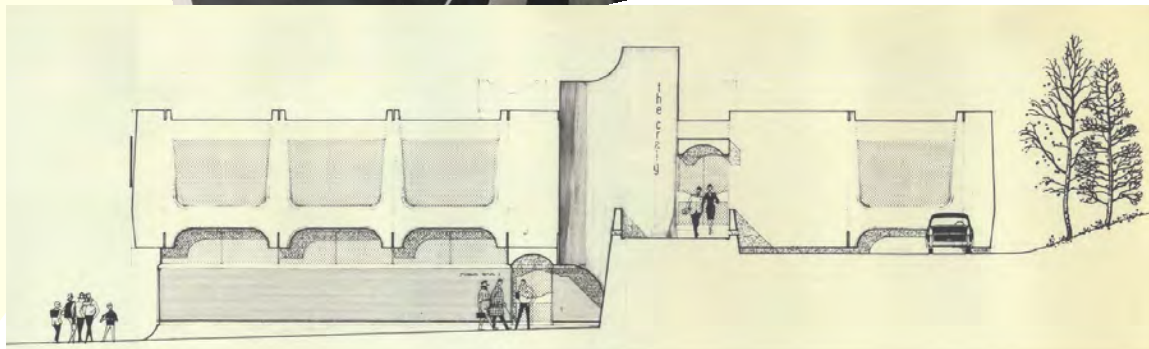
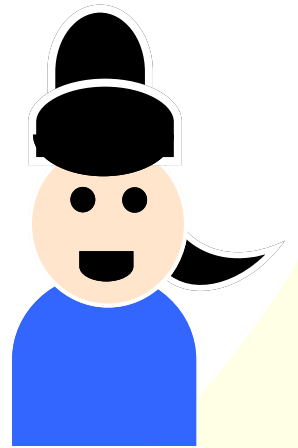
Tired buildings, pathways, unkept hedges

Outcome required	What do we need to do	How are we going to do it	What do we need (resources) to do	Who is going to do it	Timeframe	How will we know we are succeeding? outcome indicator/outputs
Bushes and hedges are trimmed regularly and kept at a manageable level		Map who owns the land Work with key land owners and volunteers to identify key areas taking into account seasons, wildlife walking routes etc	Volunteers Rangers Almond housing Greenspace members Forth river fisheries Joggers/walkers Dog walkers Young people School walk Walk to facilities and services	Brian Crystal/ Greenspace/REG Garden angels? YAP Almond Housing Hobart st Com Garden Rangers service WLC grounds		
Buildings are upgraded and utilised to the best for community benefit		Map current tired buildings			August 2019	

Action: Tired buildings, pathways, unkept hedges



Looking at ways to promote the Tower public house through its architectural interest within the brutalist period



Anti social behaviour (drinking, drugs, youths)

Key Issues /needs identified:

Current position:

youths congregating in large numbers setting fires and causing anti social behaviour within the Almond park area. Police called, Fire Officer assaulted, concerns over young people safety with alcohol

Outcome:

Residents feel safe going about their business in the streets and open spaces
 Young people use open spaces and streets appropriately and use the spaces and streets positively
 No issues arise at Local Area Committees or equivalent structures

Baseline evidence and measures

Issues raised in Police and Fire reports with youth antisocial behaviour at the East Livingston and East Calder Local Area Committee (March 2019)

Local Plan outcome indicators

Short term: plan produced and implemented , services and organisations working collaboratively to address the issues

Medium term:

How this fits into:

The Local Outcome Improvement Plan: We live in resilient, cohesive and safe communities. We live longer, healthier lives and have reduced health inequalities.

WLCPP Anti poverty strategy 2018-23 'Taking Action for Change'

- Targeting services to reduce inequalities
- Shifting resources upstream to deliver preventable measures
- Ensuring that we obtain the maximum impact for our expenditure

Anti social behaviour (drinking, drugs, youths)

Outcome required	What do we need to do	How are we going to do it	What do we need (resources) to do it	Who is going to do it	Timeframe	How will we know we are succeeding? outcome indicator/outputs
Individuals feel safe walking in the streets and open spaces	Bring all services and community together to resolve the issues	EVA organised		Police scotland YAP, Green space Young people Dog walkers Elected members Fire Service, NETS , com Reg	April 2019	EVA report produced with actions attached
	EVA findings actioned	Pruning undertaken of foliage and removal of damaged picnic benches Addressed at the TAC group with actions YAP Street work services directed to problematic areas for Fire service undertaking positive engagement non incident engagement Fire & Police undertaking a social media campaign raising awareness Follow up intervention visits to known young people		NETS- woodlands team Police, Fire, YAP YAP Fire Fire/Police WLC/ com regen Police/YAP	June 2019 May 2019 May 2019 May 2019 June 2019	Members of the TAC with actions Yap re directing young people through intervention and diversion Young people developing relationships with Fire services Leaflet promoted through WLC and local Social media, as posters, on plazma screens and leaflets for community to see. Visits undertaken

Action: Anti social behaviour



Important details when reporting anti-social behaviour

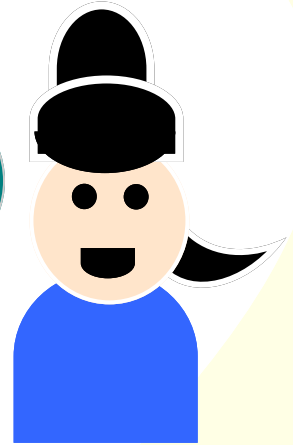
By reporting and recording incidents of anti-social behaviour it allows officers to have an awareness of what is going on in your community. If there is no record of it happening then the police may not know.

- **Accurate descriptions or names of persons involved.** Is there a vehicle registration number or other important detail? Police might be able to do follow-up work with this information.
- **Try to be precise with the location of where things have happened.** It may be that the person taking details of the incident does not know the area.
- **Do you know for sure what is going on?** Don't be tempted to make assumptions as this can be misleading for officers.

Emergency Calls: **999**
Non-Emergency: **101**

Incidents of anti-social behaviour can also be reported to West Lothian Council.
For more information on reporting go to:
<https://www.westlothian.gov.uk/article/2507/Antisocial-Behaviour>

Working with Police Scotland & Fire Scotland we developed promotional materials to promote periodically at key times ie school summer holidays




Wheelie bin safety advice

Protect your home and help prevent bin fires in your local area by following these tips:

- Put your wheelie bin out early on the morning of waste collection, rather than late at night or the day before.
- Take your bin from the kerbside as soon as possible after collection.
- Help out your neighbour – bring their bin in for them if needed.
- Don't overfill your bin - make sure the lid will close.
- Don't store your bin away from your house but within the boundary of your property and out of public sight.
- Know your escape routes.
- If a fire starts, get out, stay out and call the fire service. Avoid tackling the fire.



Fire services wrote articles for the local press and to go out through WLC social media and Police



Rubbish and Refuse Fires

There are approximately 22,000 outdoor fires each year in Scotland which require our emergency attendance and approximately 50% of all these outdoor fires involve refuse, rubbish and fly-tipped materials.

You can help prevent rubbish fires by following our advice:

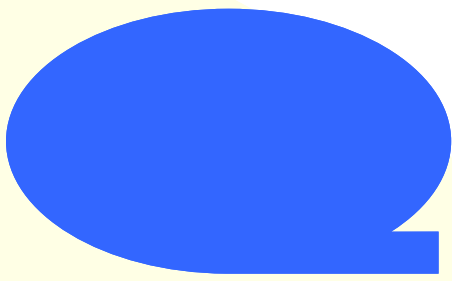
- Store your rubbish in a secure area if possible
- Keep your garage and shed locked as well as your home
- Keep all flammable liquids locked away
- Consider installing security lighting outside
- Be alert to strangers loitering in your street and call the police if strangers are loitering for some time
- Report any build-up of rubbish to your Local Authority or community fire station. This will help ensure it can be removed and prevent fires
- Report any fly-tipping direct to your Local Authority or to the National Dumpsters Stop line on: **0845 230 40 90**
- Warn other people if a fire breaks out. Then get out, stay out and call the fire and rescue service out by ringing **999**

Remember not to:

- Allow rubbish to block escape routes
- Store rubbish by doors, windows or any other openings
- Store bins or sacks up against your home as fire can quickly spread to buildings
- Overfill your bin or leave rubbish around it
- Smoke in or around storage areas
- Put bins out for emptying until the day your refuse is collected
- Fly-tip materials or leave rubbish to build up outdoors – it could start a fire
- Accept deliberately fire-setting in your community. It's a crime that threatens lives – report it to the police

Please be careful and considerate when disposing of your refuse and recycling

If a crime is being committed, or is about to be committed, or if there is a risk of serious injury, or if the fire and rescue service is needed, call **999**.



Maximising community assets

Key Issues /needs identified:	
Current position:	Outcome:
Baseline evidence and measures	Local Plan outcome indicators Short term: Medium term: .
How this fits into: The Local Outcome Improvement Plan: We live in resilient, cohesive and safe communities. We live longer, healthier lives and have reduced	
WLCPP Anti poverty strategy 2018-23 'Taking Action for Change' <ul style="list-style-type: none">• Targeting services to reduce inequalities• Shifting resources upstream to deliver preventable measures• Ensuring that we obtain the maximum impact for our expenditure	

Maximising community assets

Outcome required	What do we need to do	How are we going to do it	What do we need (resources) to do	Who is going to do it	Timeframe	How will we know we are succeeding? outcome indicator/outputs
Increased involvement with residents in community events	Promotion Working collaboratively	Develop a calendar of events; an app	Time funding	Craigshill residents		
Services work better together to maximise local resources for the benefit of Craigshill community	Identify gaps and duplication	Reduce duplication of services redirect resources to gaps in services		all		
Training providers accessing venues to deliver training	Identify current provision	Map current venues and find out what is available? Cost of venues? Current barriers?				