

Broxburn, Uphall and Winchburgh Ward Profile

Community Regeneration Officer: Dougie Grierson

June 2015

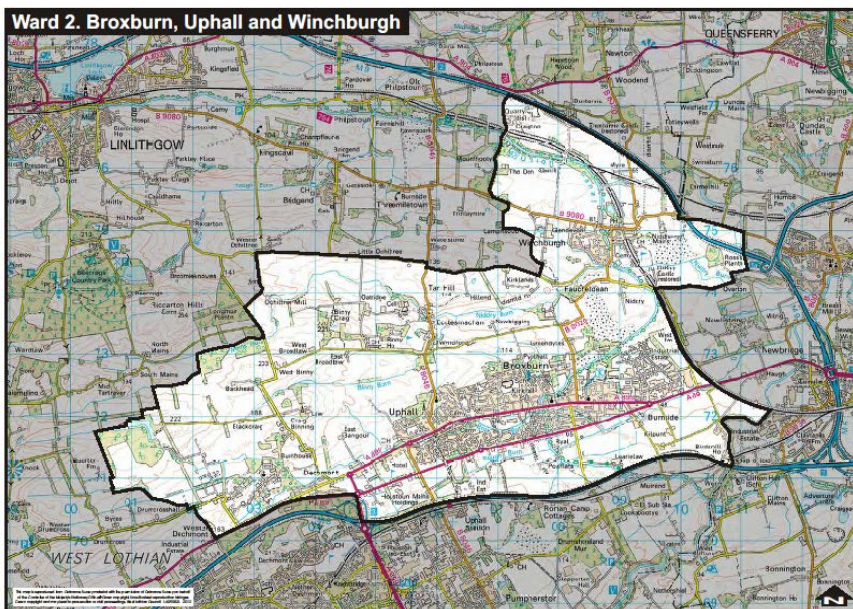


Table of Contents

- [Introduction](#)
- [West Lothian Information](#)
- [Scottish Index of Multiple Deprivation – West Lothian](#)
 - [Data Zones in the Most Deprived 20% in Scotland and West Lothian](#)
- [Key Statistics](#)
 - [Key Statistics](#)
 - [Health](#)
 - [Population and Benefit](#)
 - [Broxburn Uphall and Winchburgh – Dataszones in the Lowest 20% in West Lothian](#)
- [Census 2011](#)
- [Employment / Employability](#)
- [Child Poverty](#)
- [Useful Information and Links](#)

Introduction

Ward Profiles have been created for all nine wards in West Lothian, collating relevant data from national and local sources. The purpose of these profiles is to provide up to date data and key information consistently across West Lothian to assist groups/decision-makers when setting priorities for an area or to inform and evidence need.

Elected Representatives

The Broxburn, Uphall and Winchburgh ward has four councillors, all of whom are elected on a proportional voting system to represent the whole ward. The four councillors meet regularly as a Local Area Committee. The Chair is Alex Davidson. Those elected in May 2012 for five years are:-

			
Tony Boyle (Scottish Labour Party)	Diane Calder (Scottish National Party)	Janet Campbell (Scottish National Party)	Alex Davidson (Scottish Labour Party)

The ward is located within the Linlithgow constituency for the Scottish Parliament which is represented by Fiona Hyslop MSP. There are also seven list MSPs for the Lothians whose details are on the Scottish Parliament website.

The Broxburn, Uphall and Winchburgh ward is located within the Livingston constituency for the Westminster Parliament and is represented by Hannah Bardell MP.

There are six Members of the European Parliament who represent the whole of Scotland. Information on these is available on the European Parliament website www.europarl.org.uk

Main Settlements

This is the sixth largest ward with a population of 18,932 (based on Mid-2013 GRO Population Estimates) and includes the communities of Broxburn, Dechmont & Bangour, Ecclesmachan & Oatridge, Rural Drumshoreland, Uphall & Winchburgh. The largest settlements are Broxburn and Uphall with a combined population of 14,880 (Mid-2010 GRO Population Estimates). The area is well connected for council and community services through the Strathbrock Partnership Centre and has a range of retail opportunities running through the town centre.

Other communities are more rural based such as Winchburgh (population 2,430) a Core Development Area with plans for up to 3,500 new houses and suitable infrastructure including schools, community facilities and transport links planned. Planning permission in principle was granted for the Winchburgh core development area in April 2012.

One of West Lothian's two colleges is situated in the ward with Oatridge College, part of the Scottish Agricultural College, based in Ecclesmachan and supporting the development of rural communities and industries.

The demographics of the ward are as follows:

Age group	% in ward	% in WL
Under 16	18.78	19.88
Working age	62.14	63.34
Older people	19.08	16.78

Source: Scottish Neighbourhood Statistics, www.sns.gov.uk

[Back to Top](#)

WEST LOTHIAN INFORMATION

West Lothian information has been provided in each profile to provide a wider context of the profile for that ward.

West Lothian Single Outcome Agreement

List of Outcomes agreed by the Community Planning Partnership in February 2013 which form the Single Outcome Agreement:

- Our children have the best start in life and are ready to succeed
- We are better educated and have access to increased and better quality learning and employment opportunities
- Our economy is diverse and dynamic, and West Lothian is an attractive place for doing business
- We live in resilient, cohesive and safe communities
- People most at risk are protected and supported to achieve improved life chances
- Older people are able to live independently in the community with an improved quality of life
- We live longer, healthier lives and have reduced health inequalities.
- We make the most efficient and effective use of resources by minimising our impact on the built and natural environment.

More information is available on the following link: <http://www.westlothian.gov.uk/communityplanning>

West Lothian Council Priorities

Following the Delivering Better Outcomes consultation in 2012, West Lothian Council have set priorities as detailed in the following table.


 Analysis summary: The responses were analysed to evaluate if the council had the right priorities for West Lothian and then to rank the importance of priorities. The top rankings were for priorities concerned with early years, school children, older people and those affected by joblessness and poverty. This confirms the community's support for the council's approach to target services and resources to those most in need.	Priority	Consultation: Average Ranking
	Ensuring children have the best possible start in life	1
	Improving job opportunities, especially for young people	2
	Improving qualifications and ensuring as many school leavers as possible get a job or go into further/higher education or training	3
	Improving the quality of life for older people	4
	Minimising the effects of poverty and deprivation and promoting equality	5
	Reducing crime and making our communities safer	6
	Improving people's health	7
	Looking after the environment	8

Figure 1: Priority Analysis from Delivering Better Outcomes Consultation 2012

More information is available on the following link: <http://www.westlothian.gov.uk/article/1952/Corporate-Plan>

West Lothian Regeneration Framework

Within the Regeneration Framework are the following five themes:

- Employability and Employment;
- Early Years and Family Learning;
- Health and Wellbeing;
- Economic Development; and
- Community Capacity and Cohesion

More information is available on the following link: <http://www.westlothian.gov.uk/communityregeneration>

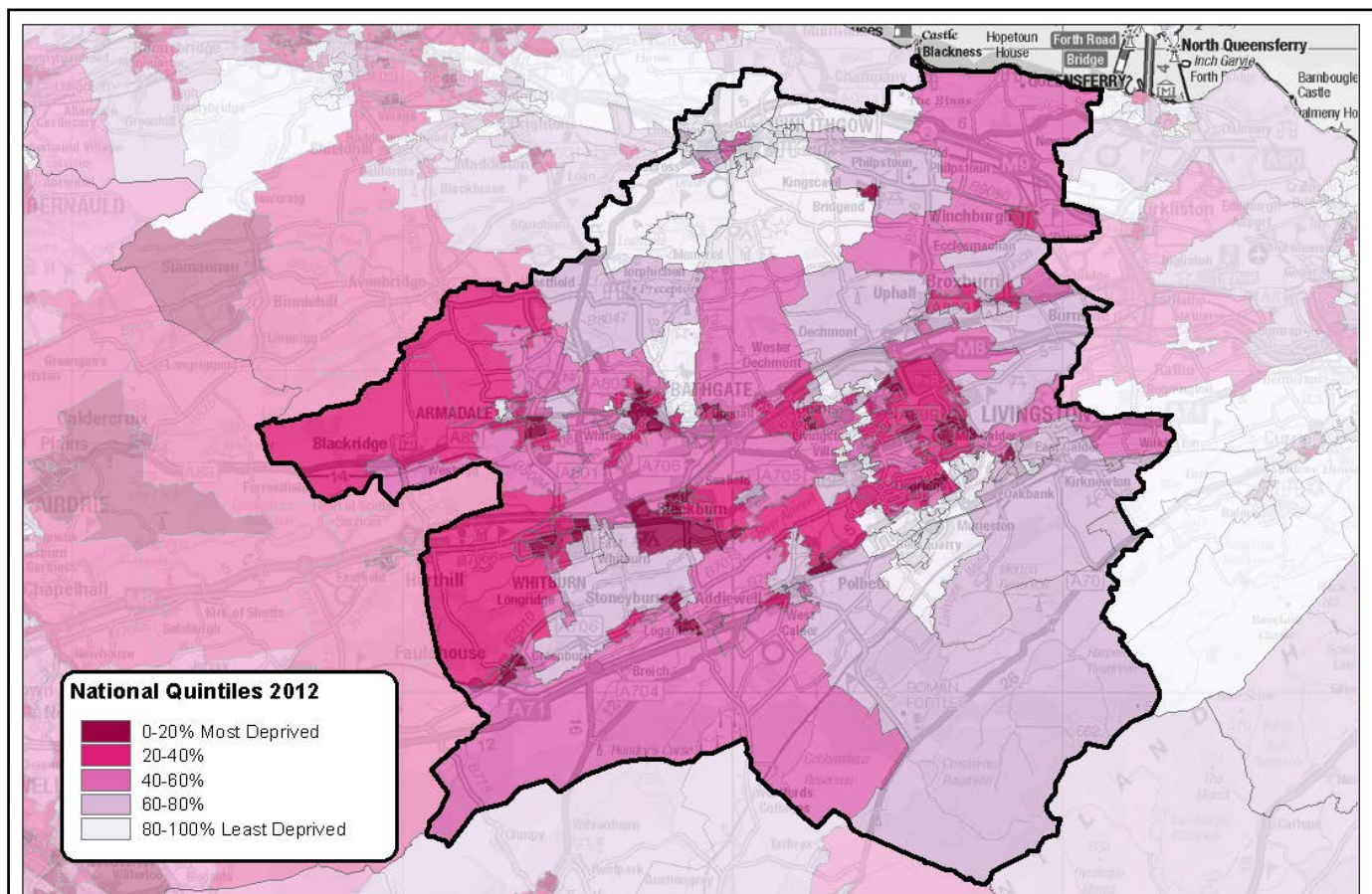
[Back to Top](#)

Scottish Index of Multiple Deprivation - West Lothian

The Scottish Index of Multiple Deprivation (SIMD) identifies small area concentrations of multiple deprivation across all of Scotland in a consistent way.

The SIMD provides a *relative* measure of deprivation which means that the SIMD 'ranks' can be used to compare data zones by providing a relative ranking. The SIMD has been used to identify Scotland's most deprived small areas on the overall index and each individual 'domain' (i.e. crime, income etc).

The above map shows what areas in West Lothian are ranked the lowest in comparison to Scotland—the darker the purple, the higher the levels of deprivation. Although West Lothian has very few datazones in the most deprived decile, most of this local authority's datazones are found in the second, third, and fourth deciles (towards the more deprived end of the distribution) in SIMD 2012. This is similar to the pattern observed for SIMD 2009.



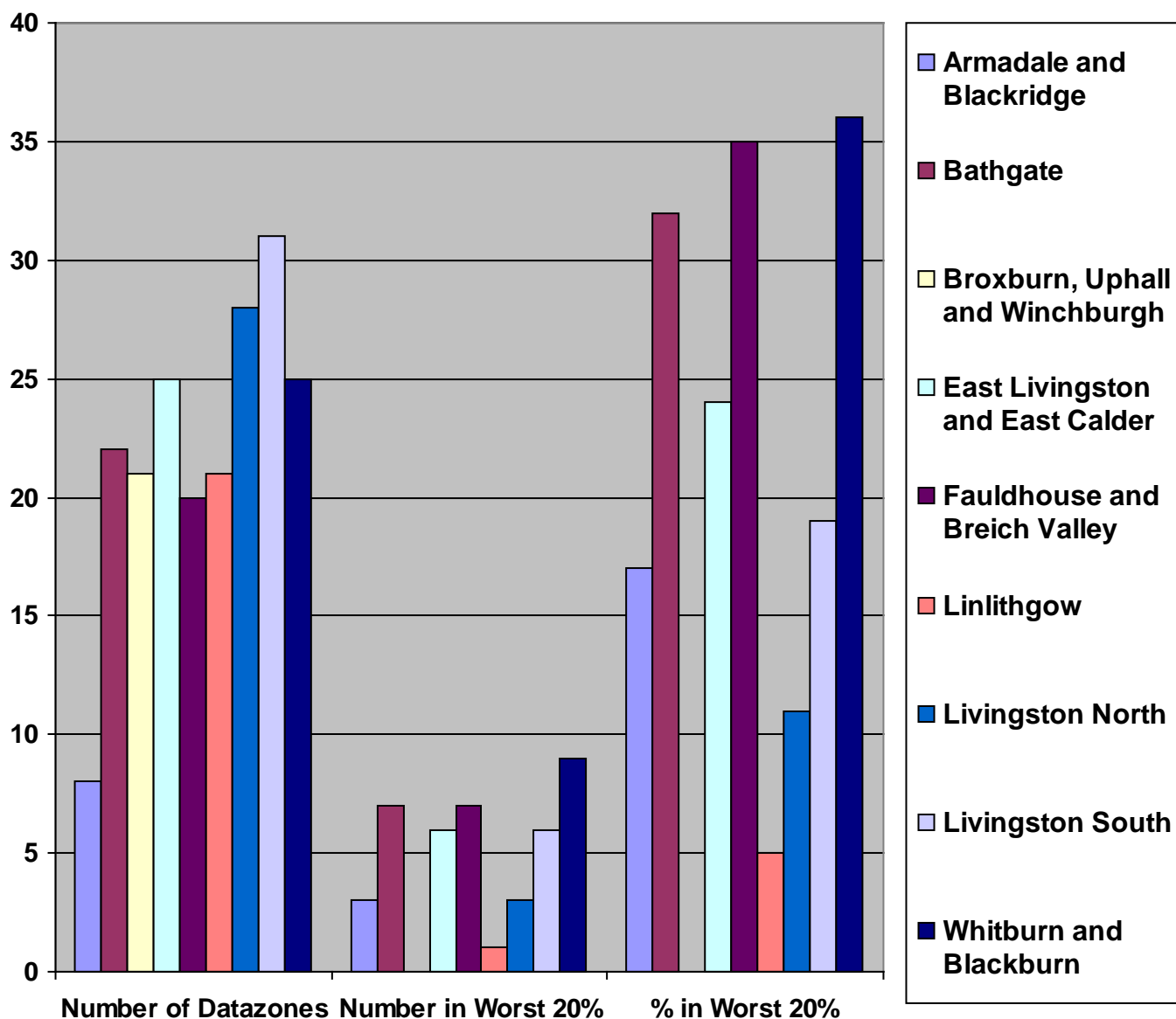
Reproduced by permission of Ordnance Survey on behalf of HMSO. © Crown copyright and database right (2012). All rights reserved. Ordnance Survey Licence number 100024655.

[Back to Top](#)

Change in Distribution and Number of Datazones in Most Deprived 20% Category in Scotland

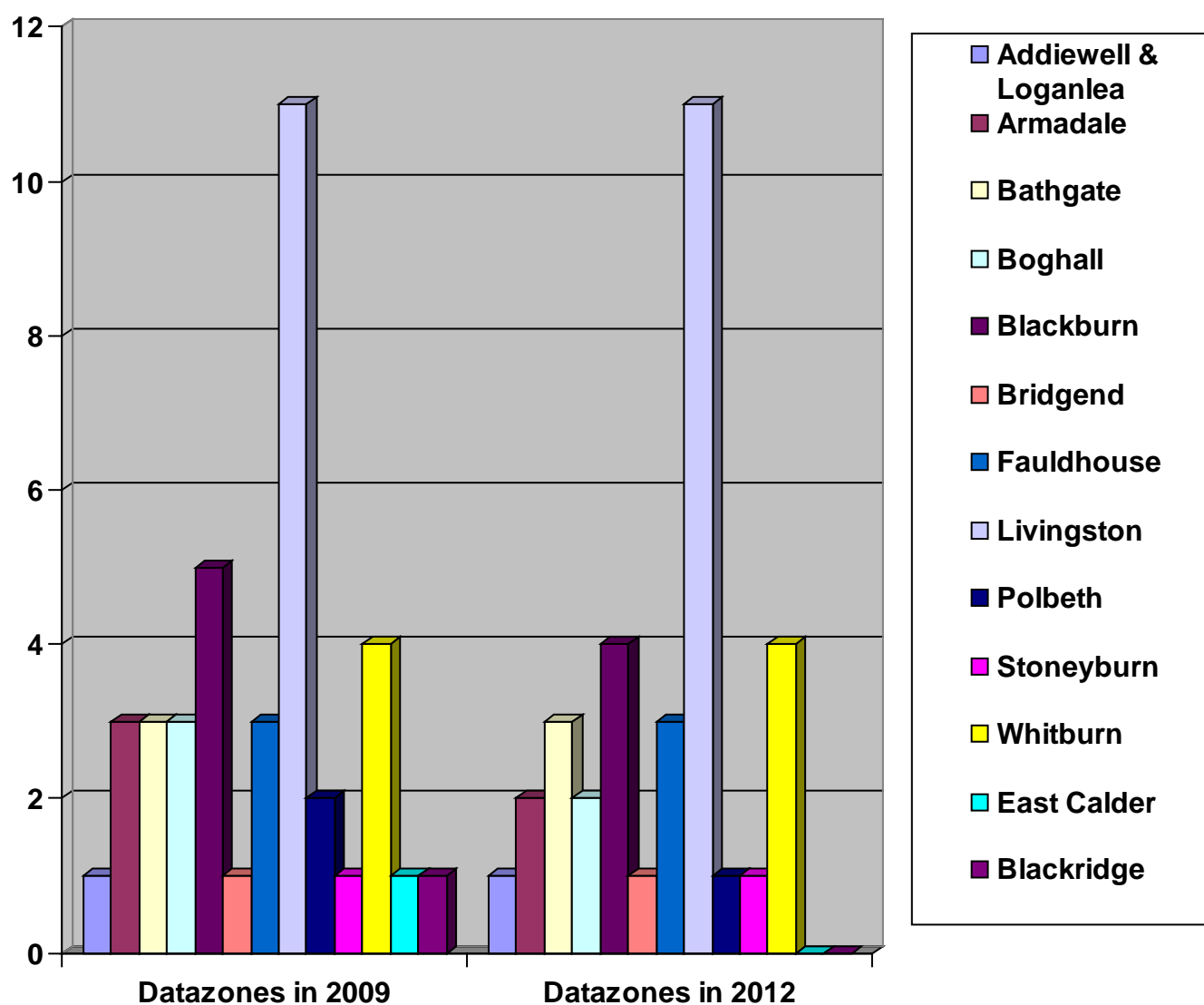
The table below shows a comparison of datazones that are in the lowest 20% in Scotland within the West Lothian multi-member wards.

Ward Name	Number of Datazones	Number in Worst 20%	% in Worst 20%
Armadale and Blackridge	18	3	17%
Bathgate	22	7	32%
Broxburn, Uphall and Winchburgh	21	0	0
East Livingston and East Calder	25	6	24%
Fauldhouse and Breich Valley	20	6	30%
Linlithgow	21	1	5%
Livingston North	28	3	11%
Livingston South	31	6	19%
Whitburn and Blackburn	25	9	36%

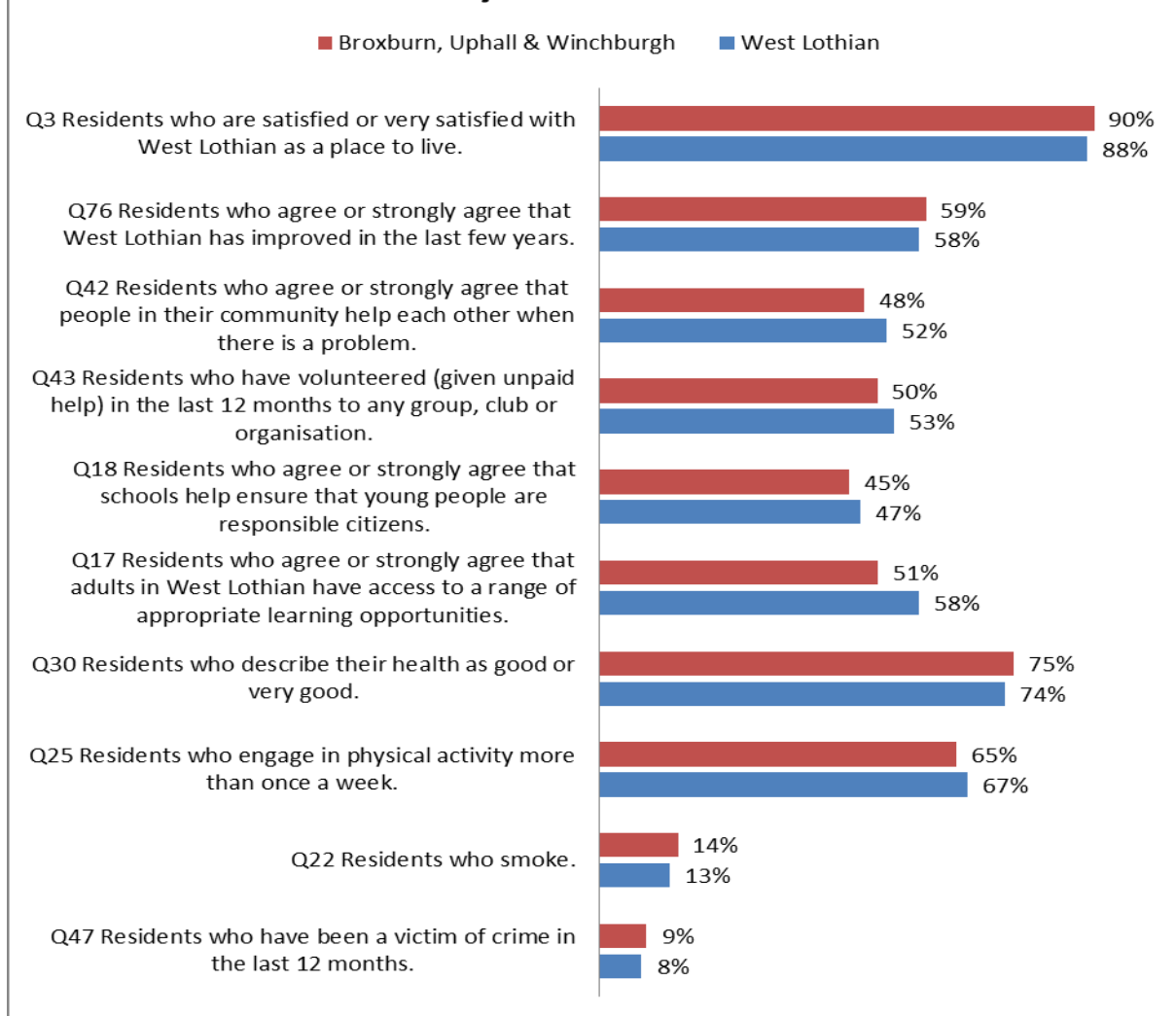


The table below shows a comparison of data zones in West Lothian in the lowest ranking 20% of all data zones in Scotland. This and the table above show that no settlements in the Broxburn, Uphall and Winchburgh ward are in the lowest ranking 20% of data zones in Scotland.

Town/Village	Datazones in 2009	Datazones in 2012
Addiewell & Loganlea	1	1
Armadale	3	2
Bathgate	3	3
Boghall	3	2
Blackburn	5	4
Bridgend	1	1
Fauldhouse	3	3
Livingston	11	11
Polbeth	2	1
Stoneyburn	1	1
Whitburn	4	4
East Calder	1	0
Blackridge	1	0
TOTAL WEST LOTHIAN	39	33



Quality of Life Indicators



The sixth West Lothian Quality of Life Survey for the Community Planning Partnership (CPP) was carried out in 2013 through the Citizens Panel. The Panel is structured to be completely representative of the West Lothian population, and representative at a multi member ward level. Panel members completed the survey in 2013 which was published in 2014.

A range of questions across a variety of subjects gave the CPP useful information about people's perceptions and experience of living in West Lothian. The CPP will use this information to plan, direct and prioritise services over the coming years. A sample of questions and results for West Lothian and the Broxburn, Uphall and Winchburgh ward are shown in the table above.

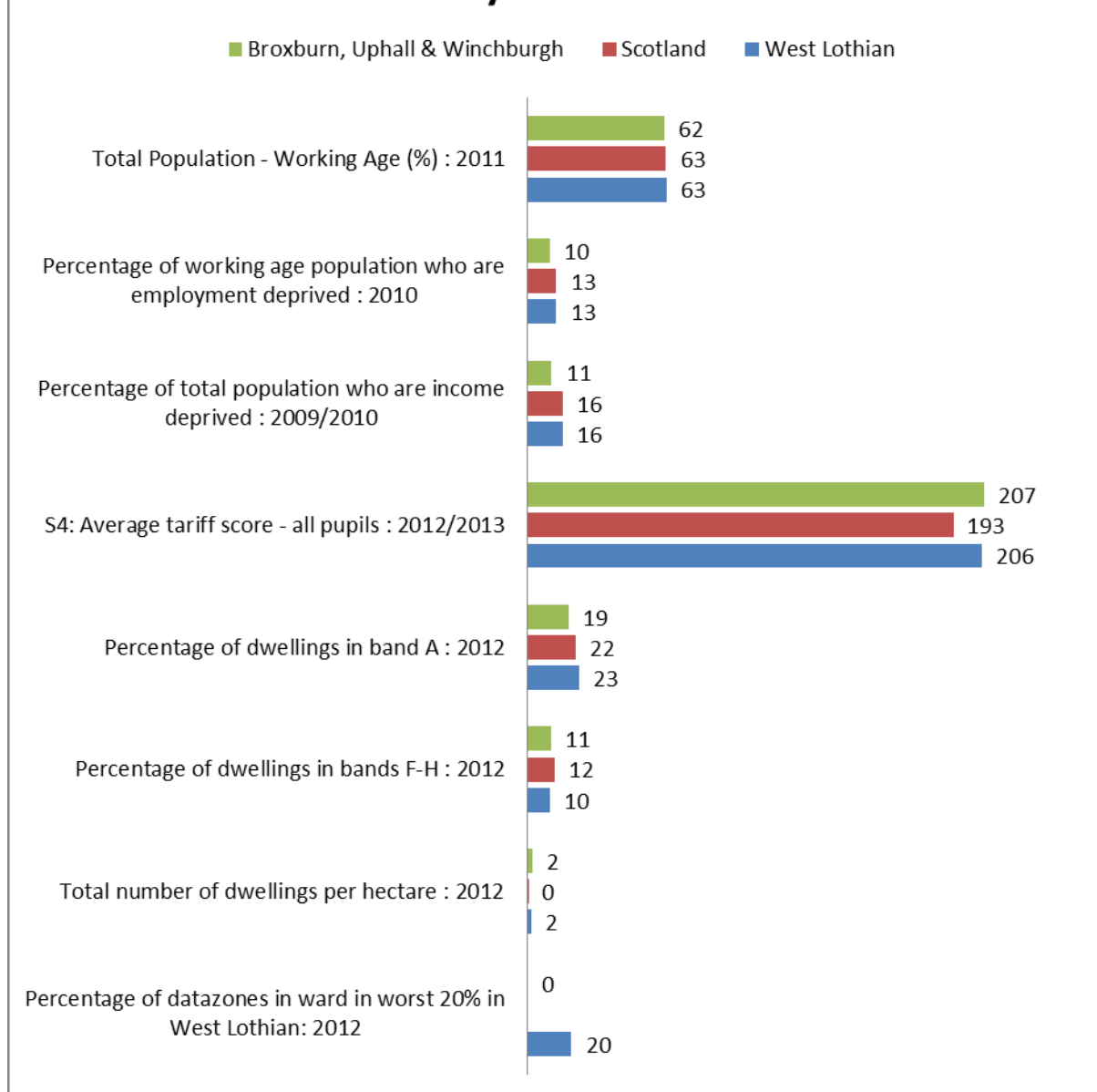
The level of satisfaction in general with West Lothian as a place to live is very strong standing at 88%. It is higher in Broxburn, Uphall and Winchburgh where there is a 90% satisfaction level. Also, more residents think the ward has improved in the last few years than is the average across West Lothian. They are less inclined to think of the ward being neighbourly however: less than half agree that people in their community help each other when there is a problem.

In general the levels for the ward are broadly similar for West Lothian as a whole with some higher and some lower. There is one exception. Significantly fewer residents report that they think that there are sufficient appropriate leaning opportunities for adults.

The Summary of Key Findings and Commentary on the West Lothian Citizens' Panel Quality of Life Survey 2010 Research Report is at [http :- http://www.westlothian.gov.uk/media/3698/Quality-of-life-2013---MMW-Results/pdf/Quality_of_Life_Survey_-_MMW_Summaries_v1_210214.pdf](http://www.westlothian.gov.uk/media/3698/Quality-of-life-2013---MMW-Results/pdf/Quality_of_Life_Survey_-_MMW_Summaries_v1_210214.pdf)

[Back to Top](#)

Key Statistics



The table above are taken from the Scottish Neighbourhood Statistics Area Profile site at:-

<http://www.sns.gov.uk/Reports/Report.aspx?ReportId=2&AreaTypeId=MW:Multi%20Member%20Wards&AreaId=S13002825>

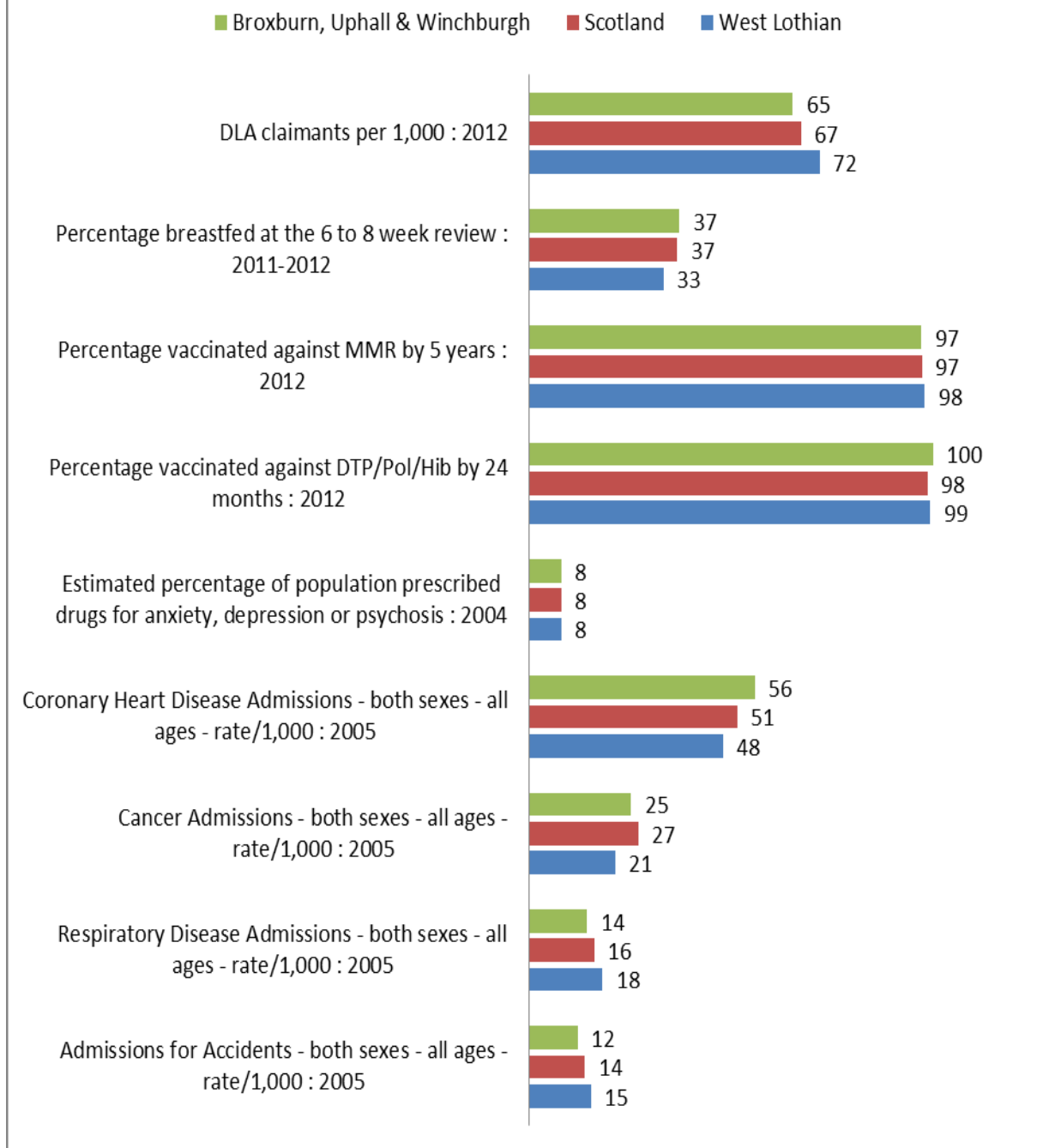
Broxburn, Uphall and Winchburgh is the sixth largest ward in West Lothian with 18,932. There are 21 “datazones” in the ward – these are small areas with around 750 residents used to identify concentrations of multiple deprivation using indicators such as unemployment, income and health. Of the 21 datazones in the Broxburn, Uphall and Winchburgh ward there are no datazones in the worst 20% in West Lothian.

The proportion of the population who are of “working age” is 62% slightly less than the averages for both West Lothian and Scotland (63%). The ward has a 10% rate of employment deprivation significantly lower than the average of 13% for both West Lothian and Scotland respectively. The ward has a lower number of residents who are income deprived (11%) than is the case across wider West Lothian and Scotland (16% respectively).

There is a lower proportion of homes in the lowest council tax band than in both West Lothian and Scotland while the number in the highest council tax band is broadly similar to the averages for West Lothian and Scotland. There is a relatively high density of housing reflecting the urban nature of the ward compared to wider West Lothian and Scotland.

[Back to Top](#)

Health Indicators



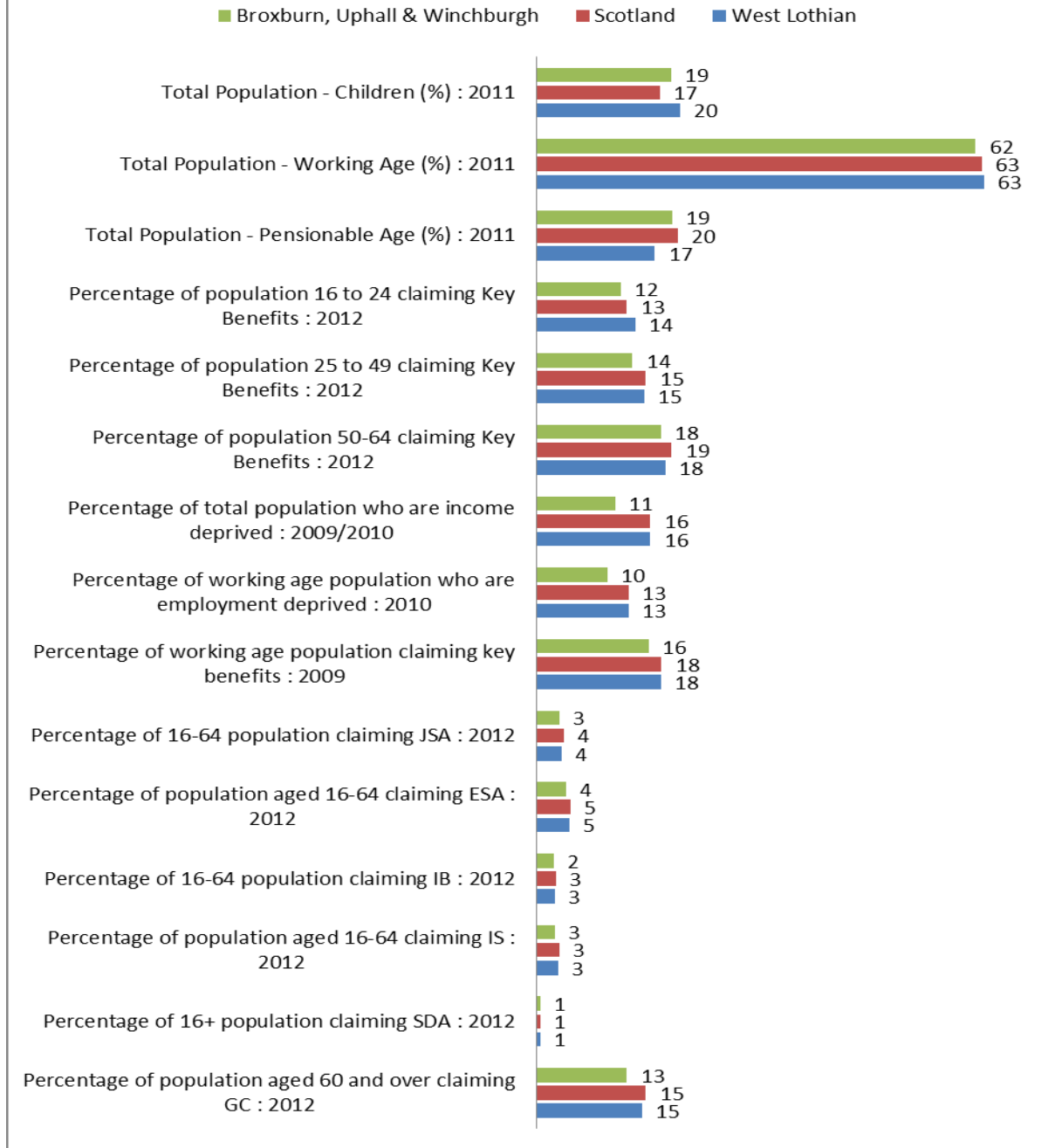
The above indicators allow a comparison between key health indicators in the ward against those for West Lothian and Scotland. They show that Broxburn, Uphall and Winchburgh has a lower proportion of people claiming Disability Living Allowance than in both West Lothian and Scotland. Vaccination rates for MMR and DTP/Pol/Hib are broadly similar to West Lothian. There is a slightly higher percentage of babies being breast fed at the 6-8 week review than the West Lothian average.

Hospital Admissions are higher than the West Lothian average in relation to Coronary Heart Disease and Cancer while there are fewer admissions in connection with Respiratory Disease, Emergencies and Accidents.

The health indicators in the table above are taken from the Scottish Neighbourhood Statistics site at: - <http://www.sns.gov.uk>

[Back to Top](#)

Population and Benefit Indicators



The above indicators allow a comparison between key populations and benefit claimants in the ward against West Lothian and Scotland. They show that Broxburn, Uphall and Winchburgh has an older population profile than West Lothian with a smaller proportion of both children and working age adults and a higher proportion of those of pensionable age.

The ward has a lower proportion of working age benefit claimants with 16% against 18% for both West Lothian and Scotland. There is also a lower proportion of residents aged 60+ claiming Guaranteed Credits which is a passport benefit for those on low incomes. The proportions of people who are income and employment deprived are lower than the averages for West Lothian and Scotland indicating that this community is relatively prosperous.

The population and benefit indicators in the table above are taken from the Scottish Neighbourhood Statistics site at: - <http://www.sns.gov.uk>

[Back to Top](#)

Broxburn Uphall and Winchburgh Ward – Datazones in the Worst 20% in West Lothian

There are 21 “datazones” in the Broxburn, Uphall and Winchburgh ward. None of these are in the worst 20% in West Lothian. More information on the ward itself is available on the following link: <http://www.sns.gov.uk/Reports/Report.aspx?ReportId=2&AreaTypeId=MW:Multi%20Member%20Wards&ArealId=S13002825> (Please note that links may not work correctly the first time due to issues with the SNS website but will work on repeat click).

In a West Lothian context, although SIMD measures multiple deprivations most areas do not have high scores across all deprivation domains – usually only experiencing high scores in 2 or 3 at most. As described above in respect of individual datazones, Income, Employment, Health and Education seem to be the main drivers of deprivation in West Lothian. Crime is a factor insofar as the higher scoring datazones tend to have town centres where there is presumably more reported crime. Neither of the Housing or Access Domains seem to have a bearing or influence the overall deprivation scores.

[Back to Top](#)

Census 2011

There is an abundance of data available from the 2011 Census. For information on the types of data available please visit the following link: <http://www.scotlandscensus.gov.uk/>

If you would like specific information for an area, please contact Andrew Cotton, Economic Development Officer with the council on 01506 283080 or email: Andrew.Cotton@westlothian.gov.uk

[Back to Top](#)

Employment/ Employability

West Lothian Council School Leaver Destination Return 2013/14 (Initial Destination Percentages)

School	Destination						
	Total Leavers	Higher Education	Further Education	Training	Employment	% Pos*	Unemployed
Broxburn Academy	152	36.8%	29.6%	2.0%	17.8%	88.2%	11.2%
West Lothian	1986	41.1%	26.4%	4.5%	19.4%	93%	6.8%

*Includes Voluntary Work and Activity Agreements

Unemployment by Multi Member Ward as of February 2015

Multi Member Ward	Male JSA claimants	Female JSA claimants	Total JSA claimants	JSA claimant rate
	number	number	number	rate
Armadale and Blackridge	129	60	18	1.9%
Bathgate	190	82	27	2.3%
Broxburn, Uphall and	130	77	20	1.7%
East Livingston and East Calder	151	90	24	1.8%
Fauldhouse and the Breich Valley	129	77	20	1.9%
Linlithgow	58	30	88	0.9%
Livingston North	128	59	18	1.3%
Livingston South	173	91	26	1.6%
Whitburn and Blackburn	253	106	359	2.3%
West Lothian	1,341	672	2,013	1.8%

Use this link to get up to date information about employment and other economic facts about West Lothian: http://www.westlothian.com/Home/wl_economy/facts_figures/

[Back to Top](#)

Child Poverty

In the figures presented below, from End Child Poverty's 'Child Poverty Map of the UK', released in October 2014, children are classified as being in poverty if they live in families in receipt of out of work benefits or in receipt of in-work tax credits where their reported income is less than 60 per cent of median income. The measure is of income before housing costs, and therefore replicates the more modest, official estimate of how many children are in poverty, not taking account of the impact of high rent or mortgage payments.

Percentage of children in poverty, Oct-Dec 2013	BEFORE HOUSING COSTS	AFTER HOUSING COSTS
Local Authority and wards		
West Lothian	13.27%	21.24%
Linlithgow	6.80%	11.03%
Broxburn, Uphall and Winchburgh	11.89%	19.12%
Livingston North	14.97%	23.60%
Livingston South	13.23%	21.26%
East Livingston and East Calder	12.13%	19.62%
Fauldhouse and the Breich Valley	16.68%	26.32%
Whitburn and Blackburn	16.47%	26.24%
Bathgate	12.19%	19.60%
Armadale and Blackridge	14.42%	23.00%

More information is available in the report on the following link: http://www.endchildpoverty.org.uk/images/ecp/Report_on_child_poverty_map_2014.pdf

[Back to Top](#)

Useful Information and Links

Community Regeneration Officer:

Dougie Grierson

Telephone Office:

01506 281088

Mobile:

07500 816852

E-mail:

douglas.grierson@westlothian.gov.uk

Ward Action Plan:

This plans shows what and how partners across the Fauldhouse and The Breich Valley ward will be working together to achieve over the coming year, what outcomes they are working towards and how they will measure progress against these.[the local ward plans will be available electronically soon at this web address <http://www.westlothian.gov.uk/article/3853/Broxburn-Uphall-and-Winchburgh-Ward>

Scottish Fire and Rescue

The Local Fire and Rescue Plan for West

Lothian: http://www.firescotland.gov.uk/media/610232/sfrs_local_plan_west_lothian_v1.pdf

This plan is the mechanism through which the aims of the SFRS's Strategic Plan 2013 – 2016 are delivered to meet the agreed needs of the West Lothian communities. <http://www.firescotland.gov.uk/>

Police Scotland

The general page for the Linlithgow ward is: <http://www.scotland.police.uk/your-community/the-lothians-and-scottish-borders/west-lothian/broxburn-uphall-and-winchburgh/>

Local Development Plan

The Local Development Plan provides a planning framework for delivering the planning vision for West Lothian, against which planning applications are assessed. The following web site contains information within each of the sections which is relevant to the ward: <http://www.westlothian.gov.uk/LDP>

Annual Ward Employability Report

The multi-agency West Lothian Working Together Group produced a report for 2013/4 regarding the employability support provided by various agencies and the impact it is having on employability in the ward. <http://coins.westlothian.gov.uk/coins/submissiondocuments.asp?submissionid=23085>

COINS

COINS is the site where West Lothian Council keeps its committee reports and papers. These are public documents and can be viewed here: <http://coins.westlothian.gov.uk/coins/>

Community News

The council web site hosts a page dedicated to local news. You can find out what is happening in Fauldhouse and The Breich Valley here: -

<http://www.westlothian.gov.uk/broxburnuphallandwinchburghnews>

Funding Newsletter

Community Regeneration produces a regular funding newsletter which outlines the funds accessible to voluntary organisations and groups in West Lothian. The latest version is available on the following link <http://www.westlothian.gov.uk/article/1980/Community-Grants>

Community Councils

Community Councils are directly elected bodies which find out and express the views of the community to local authorities and other public bodies, and take action which they feel is in the interests of its community. There are four community councils in the ward – Broxburn, Dechmont, Ecclesmachan and Threemiletown and Uphall. More information and contact details at :-

http://www.westlothian.gov.uk/Council_and_government/pol_elec_democracy/820/776 For further information you can contact the council's Community Council Liaison Officer at the following address lorraine.mcgrorty@westlothian.gov.uk

[Back to Top](#)