

Blackburn's Future

The Plan 2017-27

Updated November 2018



CONTENTS

Introduction.....	3
History of Blackburn.....	4-5
Recent Activity.....	6-8
Area Profile.....	9-10
Engagement: methods.....	11-12
Engagement: who took part	13
Engagement: findings	14
Engagement: Community Themes.....	15
Creating Themes	16-17
Actions.....	18-26
Strategy for the Future & Further Information	27



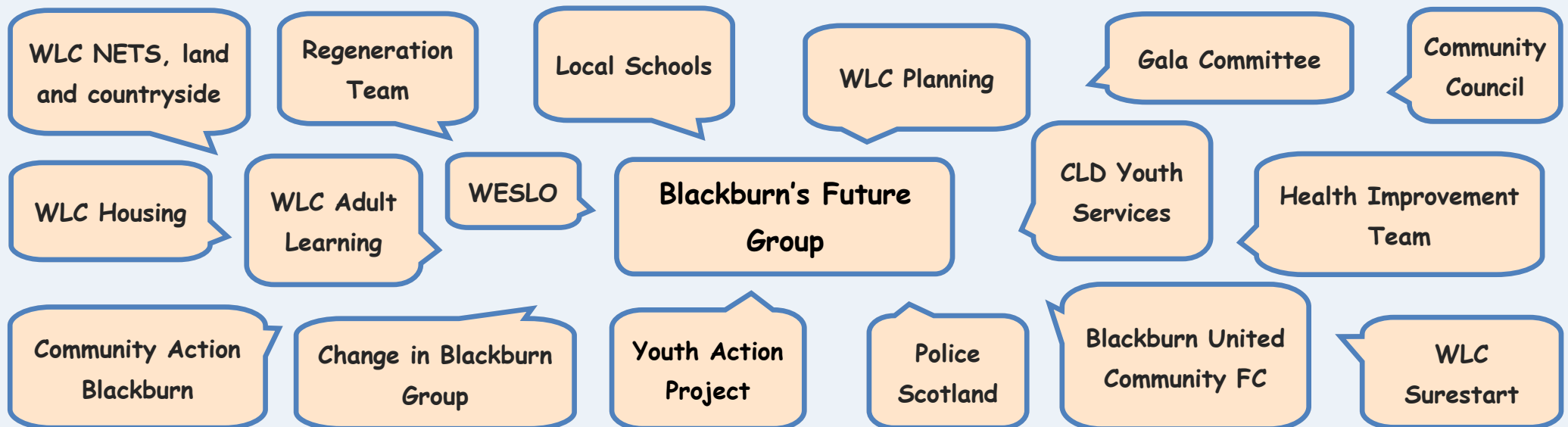
INTRODUCTION

The Community Empowerment Act 2015 states that all Community Planning Partnerships in Scotland must develop plans for those communities which experience the poorest outcomes. These plans must identify local priorities and detail actions to be taken to reduce inequalities. In West Lothian thirteen 'regeneration areas' have been identified, of which Blackburn is one. All of the identified regeneration areas have data zones within the bottom 20% of the Scottish Index of Multiple Deprivation.

This plan has been created by the Blackburn's Future Group. The group was brought together with the specific purpose of creating this long term plan for the town and it is made up of people from local community groups, council services and other agencies who work or live in Blackburn. The diagram below details all the partners who are involved so far.

The plan has been created by using information from a number of sources. Firstly, community views have been gathered through a process of local engagement and consultation. The engagement data has then been collated and considered alongside statistical information from sources such as the Census, Scotpho and SIMD, and the local knowledge of the partners on the steering group.

This is a living document covering the next ten years and will evolve and develop with the community. The plan describes how we are going to work better locally and in partnership. It summarises the consultation taken place so far and sets out a number of actions to be taken to create positive change in the community. In addition, this plan will link to other areas of work which we know affect or will have an impact on Blackburn. Examples of this include the Anti-Poverty Strategy for West Lothian, the Bathgate Learning Community Plan and the West Health Locality Plan.

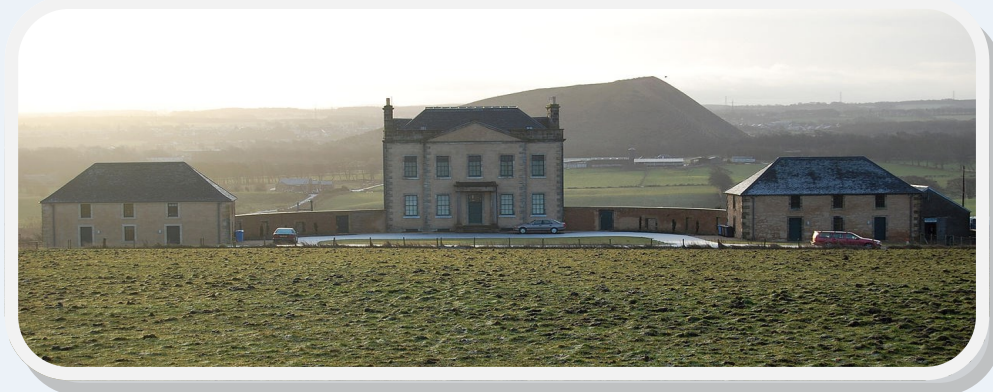


HISTORY OF BLACKBURN

Blackburn is a town in West Lothian. The name means 'the black stream' from the Old English 'black and burna stream'. The name was recorded as Blachebrine in 1152.

In the 17th century it was formed of a few cottages and steadings occupied by a group of perhaps half a dozen tenant farmers and cottages. In 1690's there were about 40 families living in these 'ferntouns' of Meikle and Little Blackburn.

In the 18th century land owner George Moncrieff bought the estate and lands of Blackburn and Meikle Blackburn. He then built Blackburn House 1771-72. Around this time there were changes in agricultural practices and land was thrown into larger more economic farms with new methods of farming. Moncrieff ordered that the new houses were to be built further West about three quarters of a mile away from his house. Meaning it moved nearer the River Almond which was the main source of power and employment throughout most of the nineteenth century. Moncrieff lived to a fine age and the heir was his nephew, Major Thomas Clarkson a former army man with a large family.



Blackburn for the most of the 18th century was a textile town. It was relatively easy to hire a loom, learn the weaving trade and get custom from Glasgow and Lanarkshire manufacturers. The wages were good and the standard of living became high because there was high demand for cloth. In 1790s there was a cotton factory employing 120 men, women and children, which ran until 1877 when it was burned down.

(Source: CAB)



HISTORY OF BLACKBURN



Major Clarkson was responsible for building the distillery in Blackburn around the 1790s, locally known as the 'stell'. Clearly alcohol wasn't in demand in the area as it was bought over by Mr Scales and turned into a canvas weaving shop.

In the 19th century steam powered looms could weave more cheaply and quickly than a handloom weaver, this resulted in trade declining and wages falling, creating hardship amongst the weavers. By the middle of the 19th century there weren't many weavers left. Most of them had taken up work in the coal mines, foundries, the Bathgate Chemical Works and later in the shale and oil works. The first flute band in Blackburn was thought to have started by Tom Gardner, when work was short he played his flute in the street for a few pennies.

In the early 1960s the British Motor Corporation decided on a site between Blackburn and Bathgate for its new vehicle works. At the same time the council agreed to re house 300 of its quote of the Glasgow overspill population in Blackburn, resulting in 500 new houses being built on Murrayfield and Riddochhil farms, a new shopping centre was built, two new academies, a hotel and a new circular library. Blackburn's population grew from 4,000 to 10,000.

In this time, it must have felt like Blackburn's unemployment problems were solved; however as the next few decades revealed dependence on one major employer wasn't an advantage. The closure of British Leyland caused Blackburn in particular severe problems, a town planned for 10,000 but with a population with just half that.

Blackburn Gala Day

The Annual Blackburn Gala Day celebrated its 107th birthday this year. Its conception was on the one day that all the local miners, mill workers had the day off and on a June day in 1911 the first Blackburn Gala Day took place. Throughout the years the Gala Day has gone from strength to strength bringing members of the community together every June. The induction of a Gala Queen and attendants at the Coronation Gala Day in 1953 became an integral part of the Gala Day and one that continues to the present day.



RECENT ACTIVITY IN BLACKBURN

Some highlights of what has happened in Blackburn recently:

Skatepark

Blackburn's skatepark opened in 2014 and was designed and built by Wheelscape. It can be found in Murrayfield Park and is a great place for the community with something for everyone. It is an all concrete skatepark that features transitions and street elements, with a great selection of obstacles.

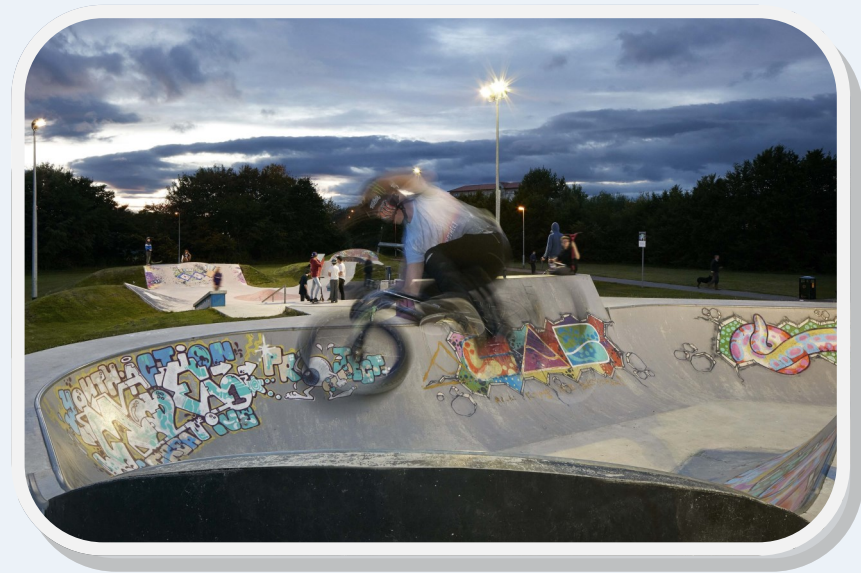
Early years consultation

A consultation took place with the early years community and the comments from this have been included in this plan.

Environmental Developments:

Blackburn Cross; Bathgate Rd Verges; Boulder Path Garden; Upgrade to Sandy Park.

As part of the Blackburn's Future Group and the engagement with the community, a play park in Redhouse Place is now being reinstated to benefit the local children. An integral process for this development is the 'buy in' by the community with them taking an active role in the project management.



RECENT ACTIVITY IN BLACKBURN

Community Action Blackburn

CAB has been working in partnership with the following organisations:

- Youth Action Project;
- West Lothian Drug & Alcohol, Service (WLDAS);
- Blackburn Community Council;
- West Lothian Community Planning Partnership;
- Blackburn Community Centre Management Committee;
- Blackburn Children's Gala Day Committee;
- Blackburn Family Centre;
- Blackburn United Community Football Club;
- Partnership working with all local schools – Blackburn, Pinewood, Connolly School Campus, Murrayfield, Our Lady of Lourdes, St Kentigern's Academy & Bathgate Academy.

Partnership with schools

The work involving Blackburn, Pinewood, Connolly School Campus, Murrayfield and Our Lady of Lourdes has led to numerous developments and work within the community, some of which are:

- Inter school annual P6 & 7 Conference;
- Blackburn Schools Poster Competition;
- Blackburn Schools Annual Calendar;

- Upgrade to King George V Park;
- Development of the Skate Park;
- Production of Community Mural which has also been digitally reproduced on acetate and mounted on the wall within Blackburn Homeless Unit assessment Centre;
- Community Notice Boards within Mill Centre;
- Annual Family Fun Day;
- Friday Club.

The school conference for 2018 concentrated on place standard consultation and actions linking in with the regeneration planning process. The school children were asked key themes relating to the place standard engagement tool developed by Scottish Government, NHS Lothian and Architecture Scotland. The findings and actions were presented at the conference and have been included in the overall findings from the main consultation carried out for the plan. The themes that emerged from the work carried out with the schools included:

- Care, maintenance and feeling safe
- Play and recreation
- Poverty, health and wellbeing
- Youth provision



2018-riptide-school conf.wma

This years song was Riptide, a rewording of the original by Van Joyce bringing in words representing Blackburn. Please click on the link to hear the 2018 School Conference song.

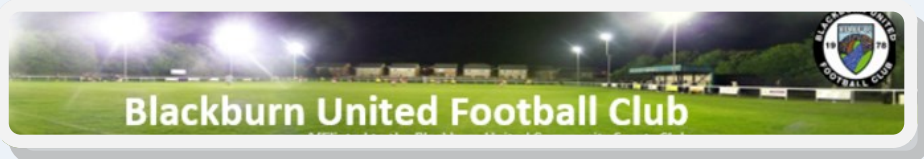
RECENT ACTIVITY IN BLACKBURN

Blackburn United Football Club

Football has been an important form of personal and community expression in Blackburn. The area is high on the Scottish Index of Multiple Deprivation (SIMD) and the Blackburn United Community Sports Club, a fully accredited SFA Legacy Club, recognises the role that football and sport can make to improving lives and life chances for young people. This has led to the continued growth of football teams of all ages within the club and there are now 17 teams with an overall membership number approaching 400.

The club is made up of an adult male team playing at Tier 6 of the Scottish Football Pyramid and a ladies team playing in the Scottish Women's Football League Division One. The club also has age group teams that range in age from Under 9's through to Under 19's and, along with a growing girls section and special needs provision, the club provides coaching for upwards of 260 children. There is also a soccer school that provides targeted coaching for children from ages 5 to 7 to equip them with the skills and the confidence necessary to progress to one of the age group teams. All the youth players in the club enjoy the guidance and direction of SFA qualified coaches.

Within the club there are 58 coaches all of whom are SFA qualified. All coaches have disclosure certificates from Disclosure Scotland (PVG). In addition there are non-coaching secretaries and First Aiders supporting and servicing these age group teams, many of whom have completed additional player protection courses. The Club has a child protection officer, an SYFA disclosure signatory and has a code of behaviour for parents, players and officials alike.



Blackburn Partnership Centre

The new £8.2 million partnership centre opened in November 2017 and is part of a joint development by West Lothian Council and NHS Lothian. The building is located next to villages' shopping centre, The Mill Centre, and incorporates many services for the community including a new GP practice, a community health centre, a dentist, Customer Information Service (CIS) centre, an employability service, Blackburn, Seafield & District credit union, public access computers, library, sports hall, IT training suite, multi-purpose, early years and young people's spaces and meeting rooms.

Civic Architects were tasked with creating a mural which tells the story of Blackburn. This is now displayed behind the reception desk inside the Centre. The design was created with input from across the whole community including the Community Consultation Group, school children, older people in the community and users of the old community facilities.

As the old community centre was emptied in preparation for the move to the new building a mural was discovered after being hidden for over 30 years. The mural had been painted in 1969, just two years after the community centre opened by, at the time, 16 year old Bruce Matchett. A local lad who spent most of his time at the centre where he was encouraged to use the craft area. After the caretaker saw his talent at drawing he was asked to make the mural and was inspired by famous faces of the time and users of the centre. Since then Bruce has worked as an executive creative director in Singapore, New Zealand and more recently Australia.

Unfortunately the original mural cannot be moved but a replica will be placed in the new partnership centre.



AREA PROFILE: what the statistics say

OUR COMMUNITY

4,869

Estimated population of Blackburn¹



Life expectancy



77.5yrs Blackburn

77.9yrs West Lothian



80yrs Blackburn

80.5yrs West Lothian²

Community assets and strengths

Partnership Centre

Mill Centre and Blackburn Connected

Community Action Blackburn

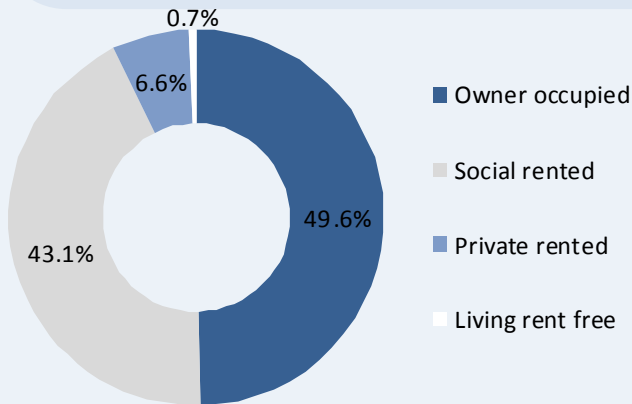
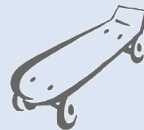
Skate Park

Blackburn United Community Football Club

Blackburn Community Centre

Galaday

Community spirit



Housing¹

There are 2,674 dwellings in Blackburn with 98% occupied⁵

OUR COMMUNITY CHALLENGES



32% is the percentage of children in poverty in Whitburn and Blackburn after housing costs (2015)⁴



16.4% are obese in primary 1 compared to the West Lothian average of 9.3%²



The crime rate is 411, this is higher than the West Lothian (287)³



14% of young people are not in education, employment or training compared to the West Lothian average of 7%³



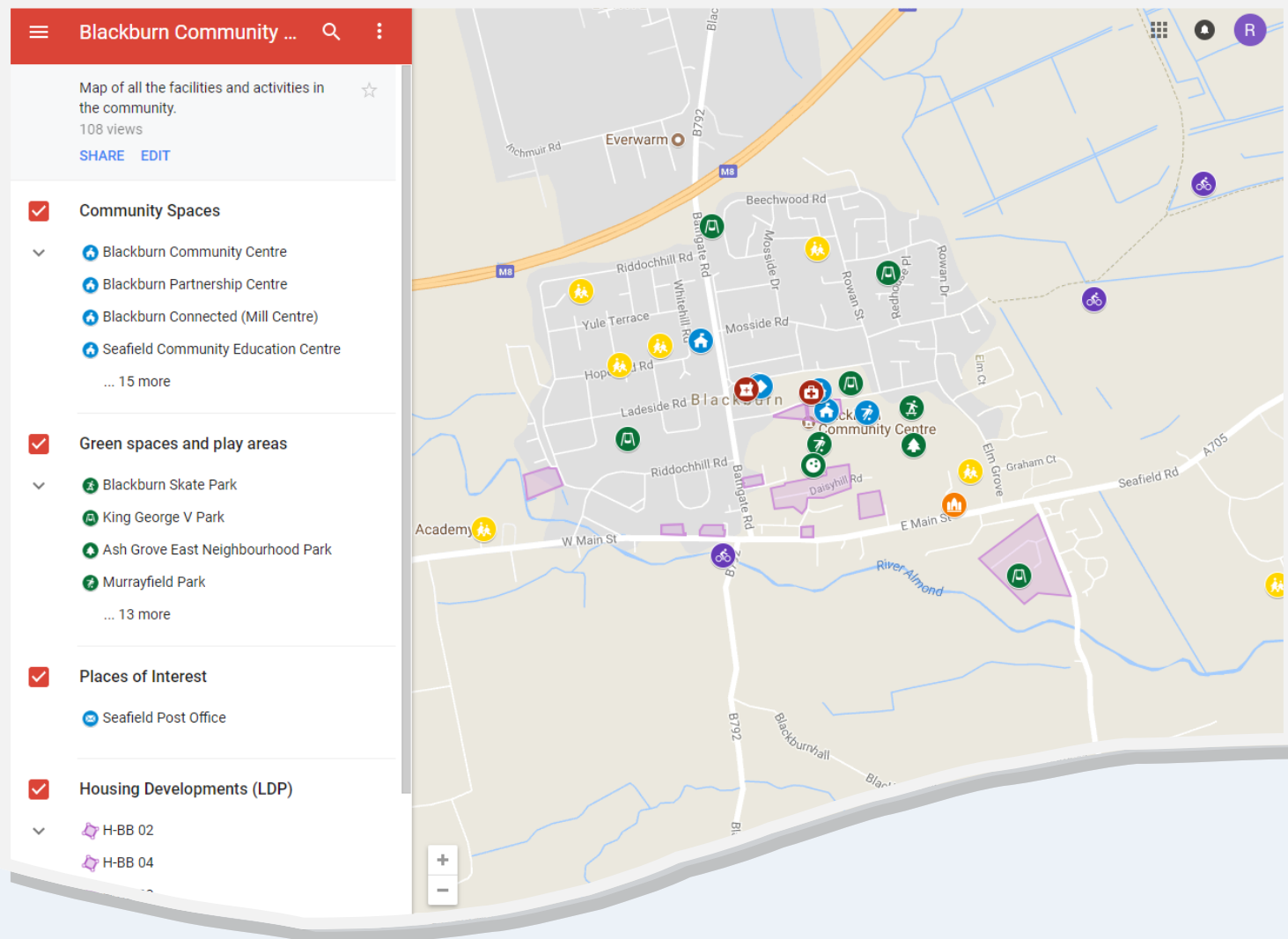
4 out of the 7 Neighbourhoods in Blackburn are within the 20% most deprived in Scotland³



22% are on prescription drugs for depression compared to the West Lothian average of 18%³

Data sources:¹ Census Data 2011; ² Scotpho 2011; ³ SIMD 2016; ⁴ Campaign to End Child Poverty 2018; ⁵ National Records of Scotland Small Area Household Estimates

AREA PROFILE: interactive map



Community Map

This is Blackburn's interactive community map. It can be found at:

www.cragroup.co.uk/blackburn

This map allows you to see what activities, facilities and events are happening in the area.

ENGAGEMENT: methods

H Diagrams

The H diagram is a simple tool which we have used to engage with those who live in the area. It consists of asking what people **like** about their area, **don't like** and any **ideas** they have to make it better. These were conducted as a mini interview which helped us drill down to the details of the issue or idea. For example if someone said they liked the park we would ask them to explain what it is about the park that they like. On the back of the H-Diagram is demographic information questions this allowed us to make sure we got a good representation of the community.

Who have we spoken to?

- Community Consultation in The Mill Centre
- WESLO
- Youth Action Project—Outreach
- Skills Development Programme
- Blackburn Family Centre
- Pinewood School
- Murrayfield Primary School
- Our Lady of Lourdes Primary School
- Blackburn Primary School
- Bathgate Academy
- St Kentigern's Academy
- Blackburn Community Centre
- Early Years Action Group
- Blackburn Women's Social Services Club
- Change in Blackburn Group

The information gathered is to support the Community Regeneration process; plan, develop and coordinate services and activities. If you would like a copy of the report or to be kept informed please leave your contact details below.

Name: Address: Contact Number: E-mail:



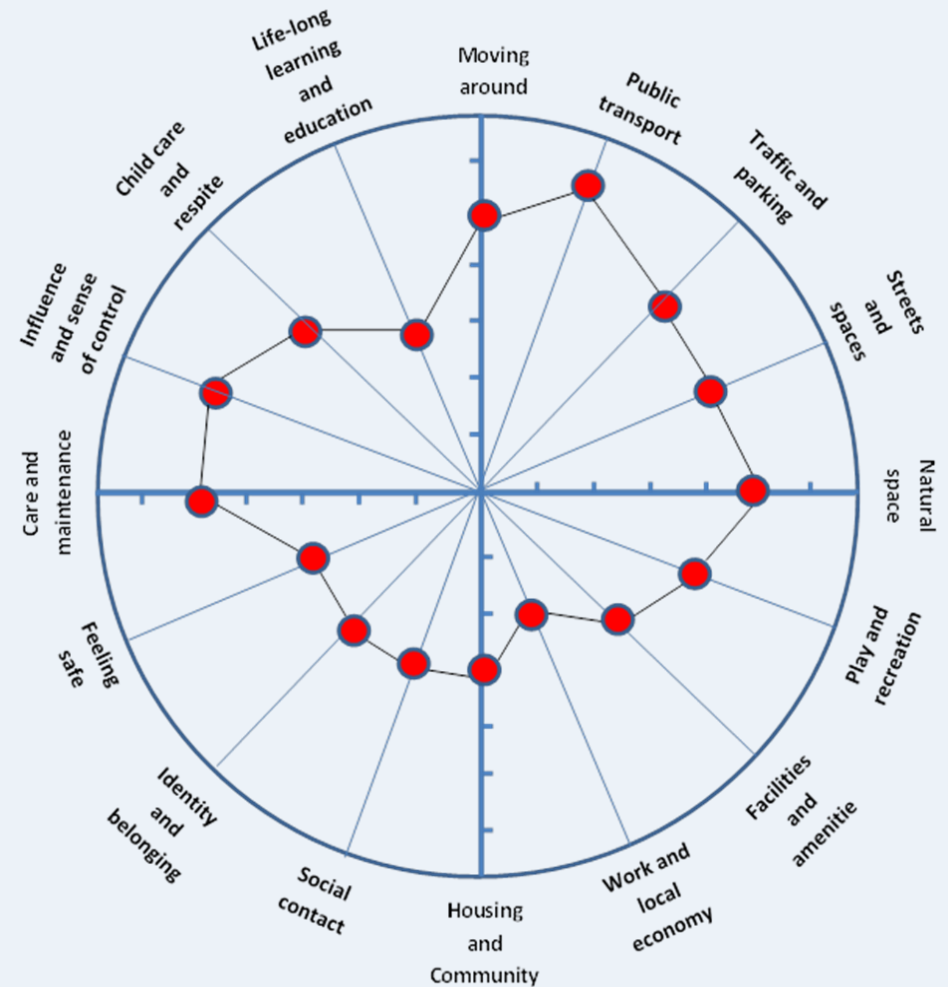
ENGAGEMENT: methods

Place Standard

The Place Standard tool was designed by the Scottish Government, NHS Scotland and Architecture & Design Scotland. It provides a simple framework to structure conversations about place and community. It covers the physical and social environment. We have added two more themes which we felt were important: Lifelong learning and education; and Childcare and respite.

Who have we spoken to?

There has currently been two place standards conducted in Blackburn with the **Change in Blackburn group** and **Pinewood School**. More place standards will be happening in the near future and any actions from these will be put into the plan.



Change in Blackburn Group Place Standard Results

ENGAGEMENT: who took part

360 people completed the survey



61%

Females

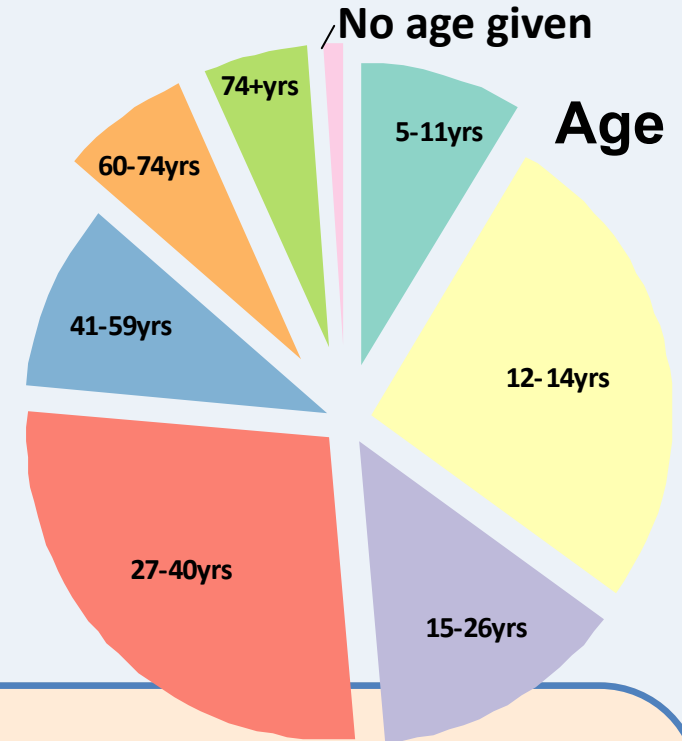


35%

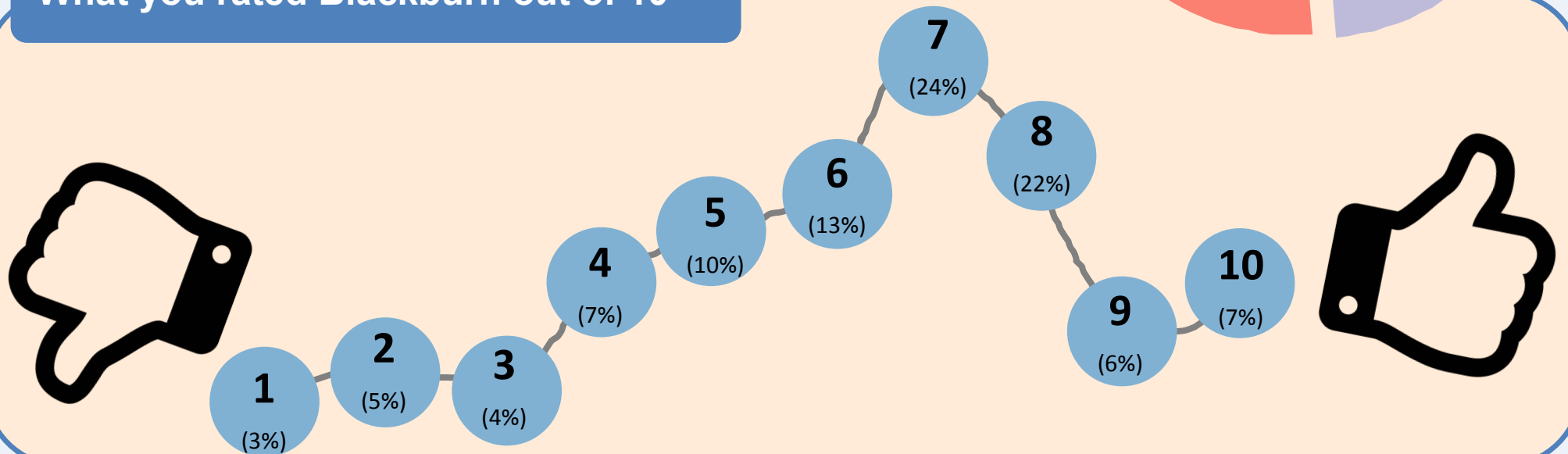
Males

8% Non disclose

53% of people who provided their postcode live in SIMD most deprived 20%



What you rated Blackburn out of 10



ENGAGEMENT: findings

All the information from the H Diagrams and Place Standards were gathered together. The comments on the H Diagrams were split up under the place standard themes. When we asked people what they liked about Blackburn this allowed us to identify what the communities assets were. By asking what they don't like and any ideas to make it better, this has helped identify priorities and areas for action.

What we like



Play and Recreation 294 comments

Football– Skate park– Parks– Clubs– The Galaday– Lots of stuff for kids to do– Baby groups

Facilities and Amenities 222 comments

Community centre– Mill Centre– Scotmid– The chippy– food places– new partnership centre– family centre– library

Social Interaction 161 comments

People are nice, friendly, helpful – my friends– everyone knows everyone– family here– Good neighbours

Identity and Belonging 122 comments

Lived here a long time– community spirit– sense of community

What we don't like



Care and Maintenance 291 comments

Feeling safe 158 comments

Facilities and Amenities 115 comments

Play and Recreation 100 comments

Our ideas



Facilities and amenities 274 comments

Play and recreation 164 comments

Care and maintenance 72 comments

Feeling safe 41 comments

ENGAGEMENT FINDINGS: Community Themes

This section sets out the community themes that came out through the consultation carried out with the community. These are the themes which had the highest comments under what you don't like and ideas to make Blackburn better. Under each theme there is examples of comments which have been made.

Care and Maintenance & Feeling Safe

Snapshot of consultation comments:

"Dog fouling around the school area and paths in general"

"Broken glass everywhere"

"I don't like the vandalism as it brings the place down"

"the amount of drugs left on the ground"

"Some play equipment has been damaged and hasn't been replaced"

"Clean up the area"

"More litter bins"

"Drugs are a common thing here"

"People setting bonfires and running parks with fines"

"Too many drunks at the weekend"

"Increase in Police presence needed"

"More community police engagement especially at the skate park"

Health Facilities

Snapshot of consultation comments:

"Not very many shops"

"Not enough doctors– waiting time and hard trying to get an appointment"

"the chemist is too small and not as efficient as it could be"

"More shops that can give you value for money"

"A place where you can get food and hang out with your pals"

"More access to swimming pools"

"Bring back a gym in the community centre"



Recreation, Learning & Youth Provision

Snapshot of consultation comments:

"Some of the parks are not suitable"

"There is nothing to do"

"Indoor hangout space for teenagers"

"Add more things and activities for children to do"

"Abandoned park area Rowan Drive area should be revamped"

"No groups or clubs for those with special needs"

"No play facilities for disabled kids at parks or groups for those with learning disabilities"



CREATING THEMES

By incorporating the consultation findings, the information we have about Blackburn from official statistics, and the local knowledge of the community members and partners agencies who sit on the Blackburn's Future Group, we have determined four initial priorities that this community plan will focus on.

All the available information has been used to help develop actions that can be taken to address the issues that people have raised, or that we know are affecting the lives of people who live here.

A recurring theme arising from the community consultation was the satisfaction with Blackburn as a place to live. There was a high volume of positive comments on the play opportunities, facilities and amenities. People overwhelmingly responded with comments about the friendliness, helpfulness and kindness of people who live here and there is numerous comments about the strong community spirit within the village.

This provides us with a great position to build upon and one that needs to be celebrated as an important asset for this area.



Overarching Theme:

Poverty, Health and Wellbeing

This theme was developed using the regeneration groups local knowledge and the statistics of the area. The statistics relating to the percentage of children living in poverty, the percentage of obese children in primary 1, the percentage of young people not in education, employment or training and the percentage of people on prescription drugs for depression are all considerably higher in Blackburn than the West Lothian average. Due to these statistics being higher than the average, the Blackburn's Future Group felt these areas needed to be included in the overarching theme.

The areas chosen to look at were:

- Obesity
- Mental Health
- Positive destinations for young people
- Children in poverty

These are wider issues in the community, which will be addresses over a longer period of time and will link with the actions in the community themes identified through the consultation carried out with the community.

CREATING COMMUNITY THEMES

Care, maintenance and feeling safe

This theme related to the overall care and maintenance of the area. Throughout the consultation, comments were made regarding litter, dog fouling and graffiti. It also came through that the community had a perception that the area wasn't safe. This was due to anti social behaviour such as setting fires and overall lack of lighting in the area.

The group recognises that the appearance of an area can impact how those living there perceive the area. By making improvements to the overall maintenance this will positively impact the perception of the area.

A walkabout will take place in Blackburn to highlight the areas of need.

Health facilities

This theme aims to address the issues that came up through the consultation about the health facilities in the area. It was highlighted that there is a long waiting time at the health centre and people are struggling to get an appointment. There was also demand for an additional chemist.

Recreation, Learning and Youth Provision

This theme reflects the need for more activities and opportunities in the community, particularly for young people.

Throughout the consultation it came through that there is a need for more youth activities and a teenage hangout space. The community highlighted that there is not a lot to do. The regeneration group discussed that this is partly due to lack of awareness. A mapping exercise will take place first to establish what is already happening in the area, this will identify any gaps. From this the group will look into ways of advertising what is already going on in the area and developing activities to fill the gaps.

One gap which was identified throughout the consultation was the lack of provision for children with disabilities, this was also discussed during the Place Standard at Pinewood School. The Blackburn's Future group recognises there is huge potential to address this, working alongside disability organisations, members of the community and Pinewood school.

OVERARCHING THEME AND ACTIONS: Poverty, health and wellbeing

MAIN THEME	BLACKBURNS FUTURE PLAN MAIN THEME: Poverty, Health and Wellbeing		
Key Issues /needs identified: Statistics provide evidence relating to the percentage of children living in poverty, the percentage of the population being on prescription drugs for depression, anxiety and psychosis and the percentage of young people who not in education, employment or training.			
Current position: 32% of children living in poverty in Whitburn and Blackburn. 22% of people are on prescription drugs for depression. 14% of young people are not in education, employment or training. These are all higher than the West Lothian average.	Outcome: Reduced number of children living in poverty. Reduced number of people being prescribed drugs for depression. Reduced number of young people not in education, employment or training.		
How this fits into the Local Outcome Improvement Plan: We live in resilient, cohesive and safe communities. We live longer, healthier lives and have			
Actions	Partners	Timescale	Update
Look into opening a community fridge	Blackburn's Future Group	2018-ongoing	
Work with local primary schools to promote maximum take up of free school meal entitlement, clothing grants and EMA.	Schools	2018-ongoing	
It was identified that child dental health was an issue coming through the statistics. During Blackburn's Week of Action Childsmile will have an information stall.	Blackburn's Future Group Childsmile	2018	During the week, lots of free toothbrushes were handed out, along with information about dental health.
A re-established time table of the Blood Donor service visiting Blackburn.	Blackburn's Future Group Change in Blackburn Group	2019	

OVERARCHING THEME AND ACTIONS: Poverty, health and wellbeing

MAIN THEME	BLACKBURNS FUTURE PLAN MAIN THEME: Poverty, Health and Wellbeing			
Actions	Partners	Timescale	Update	
A mental health event to be held looking at the mental health of all ages.	Change in Blackburn Group Blackburn's Future Group Health & Wellbeing Sub-group NHS Lothian	September 2019		
Training in Mental Health related topics including: <ul style="list-style-type: none"> • Growing Confidence • Scottish Mental Health First Aid 	Blackburn's Future Group Key Community Organisations Network NHS Lothian	2019	Dates set for January 2019 for Growing Confidence.	
Look at setting up a social prescribing mechanism for GP and health professionals to sign post patients into.	Blackburn's Future Group Health & Wellbeing Sub-group	2018		
Working with the employment advisers at access to employment	Blackburn's Future Group	2018		
Map available local provision to support young people into positive destinations.	Blackburn's Future Group	2018		

COMMUNITY THEME AND ACTIONS: Care, maintenance and feeling safe

THEME	BLACKBURNS FUTURE PLAN THEME: Care, Maintenance and Feeling safe		
Key Issues /needs identified: Park maintenance, dog fouling, litter, inappropriate graffiti, setting of fires, trouble on bonfire night, lack of lighting in specific locations.			
Current position: The community feel there is a need to improve the local parks, reduce the amount of dog fouling, litter and inappropriate graffiti in the area. A recent issue that is causing concern is the trouble on bonfire night with the level of ASB rising considerably		Outcome: Maintained parks, reduction in the level of dog fouling, litter and graffiti. Reduction in ASB on bonfire night.	
How this fits into the Local Outcome Improvement Plan: We live in resilient, cohesive and safe communities. We live longer, healthier lives and have reduced health inequalities.			
Actions	Partners	Timescale	Update
Carry out walkabouts/EVA's 2 x annually to assess the issues above. Dates to be set for the following year by the CIB Group.	Blackburn's Future Group (BFG) Change in Blackburn (CIB) Parks and Open Spaces SNT Police Scotland Environmental Officers	May 2018 November 2018 2 x yearly	Change in Blackburn group held a Walkabout on the 28th May as part of the Week of Action. Individual actions assessed according to issue.
Establishing a Care, maintenance and feeling safe sub-group in the community	BFG Partners	2019	
Pink Flats—meeting with residents from the Pink Flats to set up a working group to look at issues they are experiencing.	BFG Sub-group Community Council	2018-ongoing	Contact made with key resident. Awaiting date for first meeting.

COMMUNITY THEME AND ACTIONS: Care, maintenance and feeling safe

THEME	BLACKBURNS FUTURE PLAN THEME: Care, Maintenance and Feeling Safe		
ISSUE:	DOG FOULING		
Actions	Partners	Timescale	Update
Week of Action—Dog Fouling campaign to be carried out. Information stall in The Mill Centre. Patrols by environmental wardens.	Operation services	May 2018	Campaign delivered in the area.
Look into the possibility of an increase in signage—explore possible options for signage prevention measures. Carry out a signage audit during walkabouts.	BFG Change in Blackburn Operational services Rangers	2018-20	
Carry out an audit of current bin provision in hot spot areas. If needed—explore options around installing additional bins.	BFG Operational services	2018-20	
Look into enforcing fines during identified campaign dates.	Operational services	2018-20	
Regular campaigns 2 x yearly to enforce key messages to the public. Patrols in hot spot areas by enforcement officers.	Environmental Wardens	2018-20	

COMMUNITY THEME AND ACTIONS: Care, maintenance and feeling safe

THEME	BLACKBURNS FUTURE PLAN THEME: Care, Maintenance and Feeling Safe		
ISSUE:	LITTER, GRAFFITI & LIGHTING		
Actions	Partners	Timescale	Update
Graffiti—asses the amount of graffiti there is in the area.	BFG CIB Operational Services	2019	
Graffiti—Look into promoting of skate park with organised graffiti art project for young people to do. Artwork project could be renewed every 3-4 years as a continuing project.	BFG CIB	2019-ongoing	
Litter—Organise a litter pick (two a year) and record the amount of litter.	BFG CIB Community Council	2018-19	
Litter—Work with local businesses, community and schools to instil behaviour change and on-going litter campaigns in hot spot areas.	BFG Local businesses Schools	2018	
Litter—During the Blackburn Week of Action there will be information stalls from the Environmental Wardens.	Environmental Wardens	May 2018	The Cleaner Communities Team had a stall raising issues of litter at the
Lighting—During walkabout identify areas where there is lack of lighting.	BFG CIB WLC NETs	May-June 2018	The Change in Blackburn group raised awareness of areas where there is lack of lighting during the walk about.

COMMUNITY THEME AND ACTIONS: Care, maintenance and feeling safe

THEME	BLACKBURNS FUTURE PLAN THEME: Care, Maintenance and Feeling Safe		
ISSUE:	ASB—BONDIFRE NIGHT AND SETTING OF FIRES		
Actions	Partners	Timescale	Update
In light of the issues experienced this year and historically relating to bonfire night the need to set up an action group to work to address the ASB is required.	Community Council BFG, Sub-group Police Scotland Scottish Fire SNT Youth Providers	2018-ongoing	
Working with partners such as community fire officers and schools to come up with campaign ideas on how to tackle people setting fires and throwing fireworks.	BFG, CIB Scottish Fire Service Police Scotland Schools	2018-19	
During walkabout identify areas where there is potential for fires – such as where debris is lying about	Scottish Fire Service	May-June 2018	
Invite community fire officers to speak at the regeneration meeting about the fire settings and what is being done to tackle it.	BFG, CIB Scottish Fire Service	2018	
During Blackburn’s Week of Action the Safer Neighbourhoods Team (SNT) will have a stall in the Mill centre. The Scottish Fire Service will also be attending the Family Event on the Wednesday to talk to the community about fire safety.	SNT Scottish Fire Service	May 2018	The Scottish Fire Service attended the Family Event and brought the Fire Engine to raise awareness of fire safety.

COMMUNITY THEME AND ACTIONS: Health facilities

THEME	BLACKBURNS FUTURE PLAN THEME: Health Facilities		
Key Issues /needs identified: Issues regarding the health centre such as waiting time for doctors and struggle to get an appointment.			
Current position: Issue with accessing appointments with a GP and the need for an additional chemist in the area.		Outcome: The community are able to access health care easily and an additional chemist is in the village	
How this fits into the Local Outcome Improvement Plan: We live longer, healthier lives and have reduced health inequalities.			
Actions	Partners	Timescale	Update
Contact the health centre to set up a meeting to discuss the concerns found in the consultation findings.	Blackburn's Future Group Health Centre	2018	
Pass findings from the consultation over to the chemist to see if they can address the issues raised.	Blackburn's Future Group Local Chemist	2018	
Highlight to the community using information sessions the number of appointments that are missed in Scotland per year. Highlight other options to the community regarding services other than GPs who can support health related issues. Communication in the community to be strengthened using a partnership approach. Information sessions to be included at events in the community	BFG Health Centre	2018-on going	

COMMUNITY THEME AND ACTIONS: Recreation, learning & youth provision

THEME	Blackburn's Future Plan Theme: Recreation, learning & youth provision		
Key Issues /needs identified: Need more activities for ALL young people			
Current position: Lack of provision for young people		Outcome: An increase inclusive activities and venues in Blackburn for young people.	
How this fits into the Local Outcome Improvement Plan: We live longer, healthier lives and have reduced health inequalities. We live in resilient, cohesive and safe communities.			
Actions	Partners	Timescale	Update
Develop the interactive map <ul style="list-style-type: none"> Partners to send over what activity they have going on in the community Find a website to host the map Publish the map through the regeneration plans, put links on community fb pages etc. Partners to take over the running of the map Funding for an interactive screen to be secured Launch of Map during CABs AGM 	BFG CAB	2018	Interactive Map developed and activities, assets etc. logged Launch of Map to take place on 19 November. Funding secured for the screen. Still to purchase.
Mapping exercise to identify what is available for young people. Gaps in provision to be addressed. Youth Club to be reinstated.	Blackburn's Future Group Aspiring Communities Worker	2018-19	Mapping of activities undertaken. Current Youth Club provision reduced due to staff numbers.
Begin communication with Pinewood and share the information from the consultation.	Blackburn's Future Group Pinewood	2018	
Undertake a scoping exercise into what is already in Blackburn that is accessible to children with both physical and learning disabilities eg: Play parks.	BFG Pinewood Sub-group	2018-20	

COMMUNITY THEME AND ACTIONS: Recreation, learning & youth provision

THEME	BLACKBURN'S FUTURE PLAN: RECREATION, LEARNING & YOUTH PROVISION		
Key Issues /needs identified: Need more activities for ALL young people			
Current position: The community identified that there is nothing available for teenagers which they believe leads to ASB.		Outcome: Teenagers have a place to hang out and results in the reduction of ASB.	
How this fits into the Local Outcome Improvement Plan: We live longer, healthier lives and have reduced health inequalities			
Actions	Partners	Timescale	Update
New Youth Space for Teenagers—consultation findings to forwarded to YAP so they can use it for future provision and potential evidence for funding.	Blackburn's Future Group YAP	2018	
Reinststate play park at Redhouse Place: <ul style="list-style-type: none"> • Secure funding • Secure additional funding for equipment for older children • Consultation with schools • Design agreed • Work completed 	Sub-group BFG Open Space Officer Play Park Officer Local Schools	2018	Funding secured. Consultation taken place with schools. Pinewood declined. Design agreed.

STRATEGY FOR THE FUTURE

This plan is a community plan that will be updated as the communities priorities change over the next 10 years.

The plan is fluid in that it will be developed on an on going basis. This is likely to mean that new action and themes will be added and some initial actions and themes drop off.

Whilst engagement and consultation have helped to shape the initial actions and themes opportunities to consult and engage community members will be built in to help to keep the community up to date.

The Plan itself will be updated each year to update the community and partner sand refresh the plan going forward.

Regeneration Officer

Name: Michelle Kirkbright

Address: West Lothian Council, West Lothian Civic Centre,
Howden South Road, Livingston EH54 6FF

Email: michelle.kirkbright@westlothian.gov.uk

Tel: 01506 283233/07500 816855



FURTHER INFORMATION

Useful links and information relating to Blackburn can be found below:

Community Action Blackburn's (CAB) website:

<http://blackburnwestlothian.co.uk>

<https://en-gb.facebook.com/CommunityActionBlackburn>

Blackburn Partnership Centre's website:

<https://www.westlothian.gov.uk/blackburnpartnershipcentre>

Blackburn Family Centre's website:

<http://www.blackburnfamilycentre.co.uk>

Doctors Surgery website:

<http://www.ashgrovegrouppractice.scot.nhs.uk>

'Blackburn Gala Day' Facebook Page:

<https://en-gb.facebook.com/BlackburnGalaDay>

Blackburn United Football Club website:

<https://blackburnunited.homestead.com>

West Lothian Council Community Regeneration website:

<https://www.westlothian.gov.uk/communityregeneration>

West Lothian Council Whitburn and Blackburn webpage:

<https://www.westlothian.gov.uk/article/3859/Whitburn-and-Blackburn-Ward>

'Your Community Whitburn and Blackburn' Facebook Page:

<https://en-gb.facebook.com/yourcommunitywhitburnblackburn>

Blackburn West Lothian Facebook Page:

<https://www.facebook.com/BlackburnWestLothian>