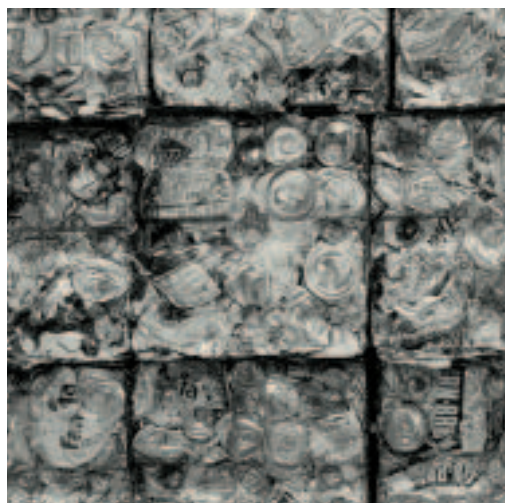


Cans Waste Journey

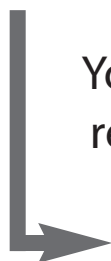
Twenty recycled aluminium cans can be made with the energy it takes to manufacture one brand new can.



Place your aluminium and steel cans into your blue bin where available.



Your cans are then melted down and used to make new cans. There is no limit to how many times aluminium or steel cans can be recycled.



Your cans are taken to a recycling facility where they are separated into steel and aluminium, crushed, baled and then sent to a reprocessor.

